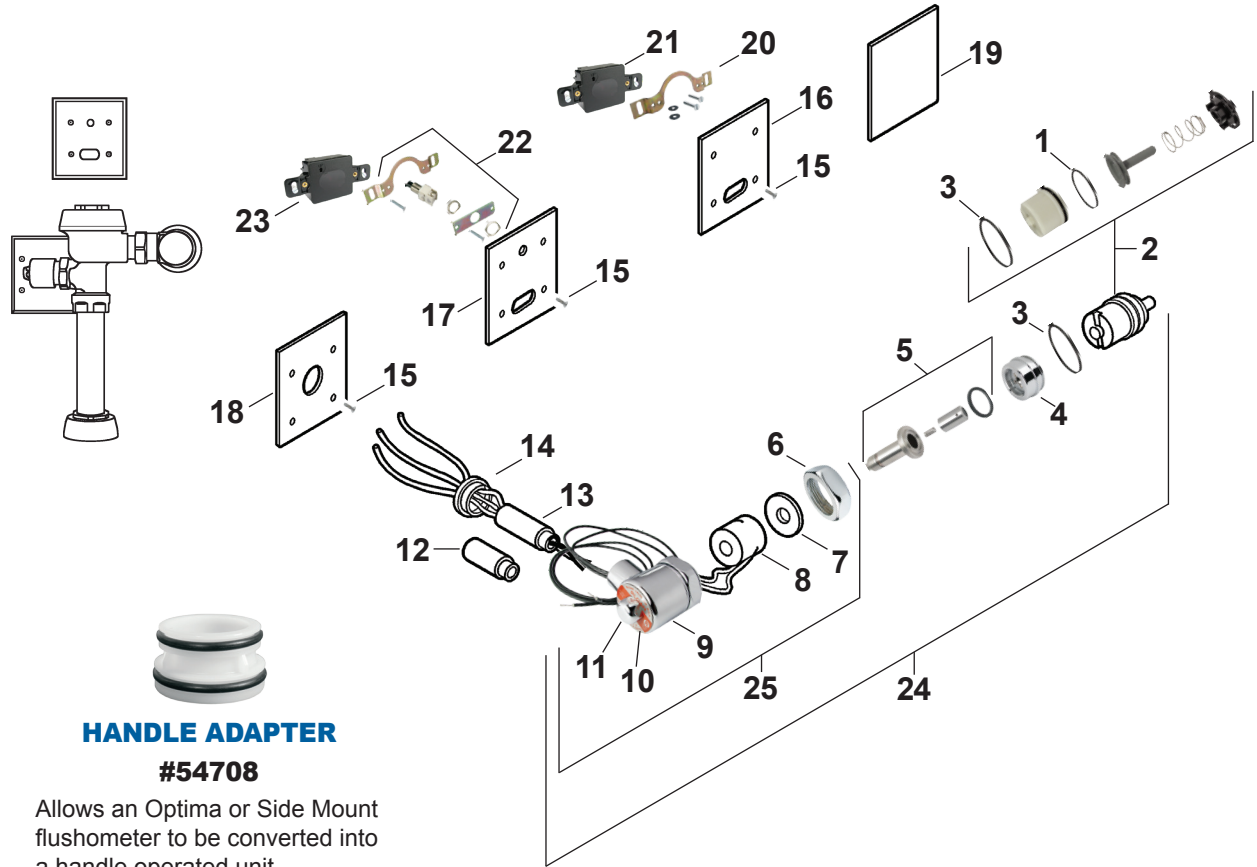


# SLOAN OPTIMA

## SLOAN OPTIMA FLUSH VALVE PARTS BREAKDOWN



### HANDLE ADAPTER #54708

Allows an Optima or Side Mount flushometer to be converted into a handle operated unit.

1	#05160E	O-Ring
2	#SP167	Actuator Cartridge Assy. Repair Kit
3	#50045E	O-Ring
4	#56122	CP Adapter for Solenoid
5	#08552	Solenoid Shaft Assy.
6	#08054	CP Handle Coupling
7	See #25	Solenoid Flux Plate
8	#08586	24 VAC Coil
9	See #25	CP Solenoid Housing
10	See #25	Face Plate for 24 VAC Solenoid
11	#08714	CP Nut for Solenoid
12	<b>Call for assistance</b>	CP Extension Nipple Adapter
13	#82809	CP Nipple Assembly
14	#80295	CP Flange Assy. (exposed installation)

15	#08484	CP Screw (4 Required)
16	#08411	CP Cover Plate for Sensor & Solenoid Operator (Urinal only)
17	#08410	CP Cover Plate for Sensor with Override Switch (Closet only)
18	#08761	CP Cover Plate for Solenoid Operator (Closet only)
19	#SP6269	Blank Plate
20	#08481	Yoke Assy. (Urinal only)
21	#08276	Urinal Sensor Replacement Kit.
22	#08482	Override Switch & Yoke Assy. (Closet only)
23	#08450	Closet Sensor Replacement Kit
24	#08275	Complete Solenoid Valve 24V
25	#08735	Exposed Solenoid Valve 24V