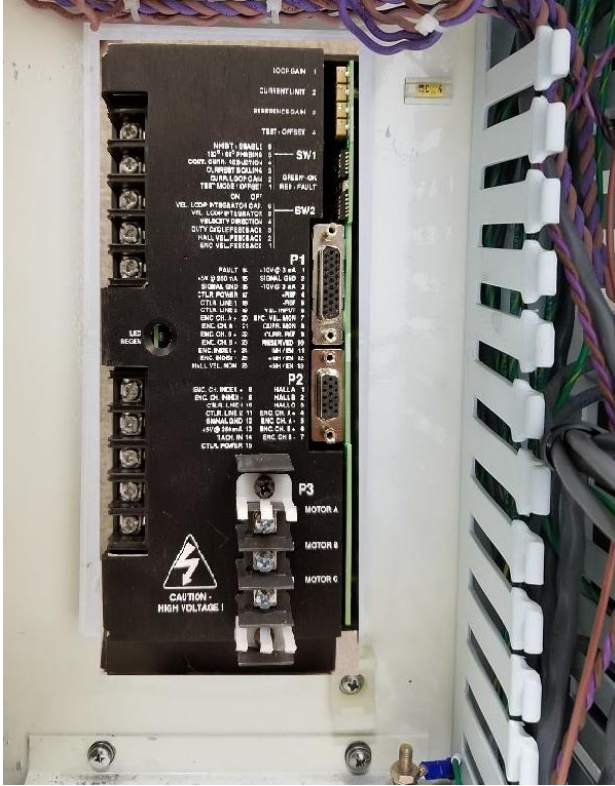




472 POLISH ARM MOTOR DRIVER UPGRADE

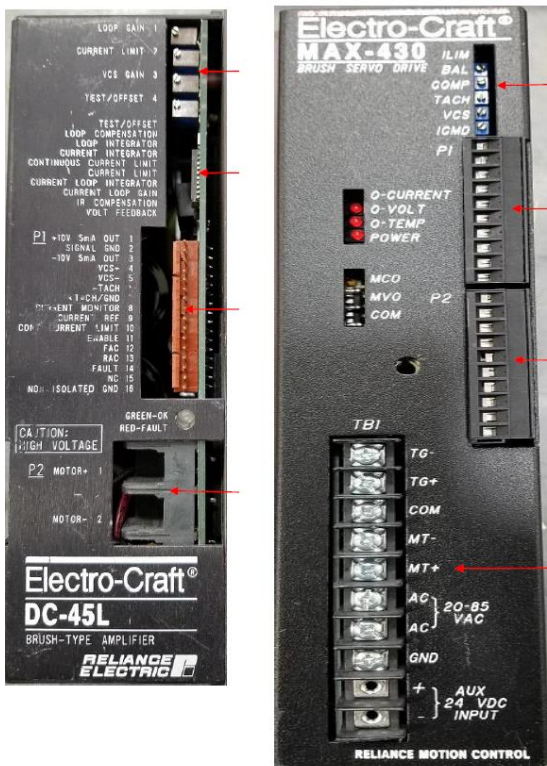


Overview

The 472 IPEC polisher has been in production for well over 25 years. During this time most of the original parts have become obsolete including the driver used in the polish arm sweep assembly. This upgrade is a drop in replacement option for the OEM legacy drivers DC-35L, DC-45L and MAX-430.

Highlights

- Kit includes installation and setup instructions.
- Quieter, smoother and cooler operation temperature.
- Hardware and custom bracket allows new driver to fit within the same location as OEM.
- Driver can be supported for at least the next 8-10 years.
- Upgrade does not effect process.
- Driver works with existing polish arm motor.





To Find Out More Or To Place An Order See Our Links Below.

To email Entrepix parts or to get additional parts information click icon.



To explore, shop and download part information click icon.



To call Entrepix parts dial or click. icon

