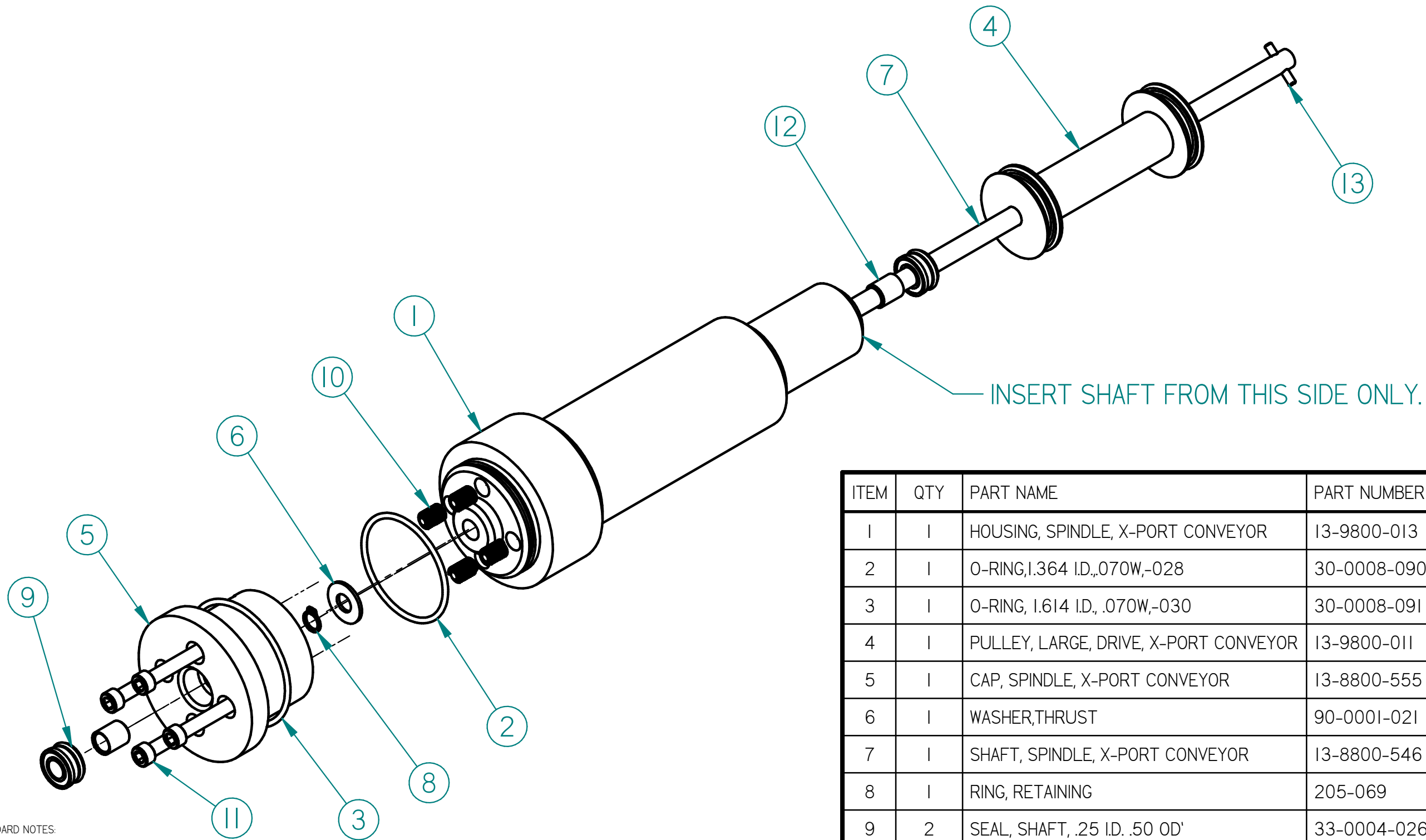


ITEM	QTY	PART NAME	PART NUMBER	MATERIAL
1	1	HOUSING, SPINDLE, X-PORT CONVEYOR	13-9800-013	PET-P WHITE
2	1	O-RING, 1.364 I.D., .070W, -028	30-0008-090	STANDARD
3	1	O-RING, 1.614 I.D., .070W, -030	30-0008-091	STANDARD
4	1	PULLEY, LARGE, DRIVE, X-PORT CONVEYOR	13-9800-011	PET-P WHITE
5	1	CAP, SPINDLE, X-PORT CONVEYOR	13-8800-555	PET-P WHITE
6	1	WASHER, THRUST	90-0001-021	SS
7	1	SHAFT, SPINDLE, X-PORT CONVEYOR	13-8800-546	316 SS
8	1	RING, RETAINING	205-069	STANDARD
9	2	SEAL, SHAFT, .25 I.D. .50 OD'	33-0004-026	STANDARD
10	4	HELICOIL	#8-32 X .328 - 91732A713	18-8 SS
11	4	SHCS	8-32 x 2.0 - 92185A209	316 SS
12	2	BEARING, SLEEVE, 1/4" I.D. X 5/16" O.D.	33-0002-032	STANDARD
13	1	PIN, PRESS	13-8800-126	STANDARD

STANDARD NOTES:
 1. INTERPRET DIMENSIONS AND TOLERANCES PER ANSI Y14.5M
 2. BREAK AND DEBURR ALL EDGES AND CORNERS .005 - .015
 3. PARTS TO BE FREE OF DIRT, OIL, AND OTHER CONTAMINANTS.
 4. DO NOT SCALE DRAWING.
 5. DIMENSIONS APPLY AFTER FINISH.
 6. COAT O-RINGS WITH GREASE (P/N 97-0007-002) PRIOR TO INSTALLATION.
 7. LUBRICATE SHAFT (ITEM # 7), WITH GREASE (P/N 97-0007-002) PRIOR TO INSTALLATION OF SEAL (ITEM # 9) OBSERVE DIRECTION OF SPRING ORIENTATION

MATERIAL NOTE:



STANDARD NOTES:

1. INTERPRET DIMENSIONS AND TOLERANCES PER ANSI Y14.5M
2. BREAK AND DEBURR ALL EDGES AND CORNERS .005 - .015
3. PARTS TO BE FREE OF DIRT, OIL, AND OTHER CONTAMINANTS.
4. DO NOT SCALE DRAWING.
5. DIMENSIONS APPLY AFTER FINISH.
6. COAT O-RINGS WITH GREASE (P/N 97-0007-002) PRIOR TO INSTALLATION.
7. LUBRICATE SHAFT (ITEM # 7), WITH GREASE (P/N 97-0007-002) PRIOR TO INSTALLATION OF SEAL (ITEM # 9) OBSERVE DIRECTION OF SPRING ORIENTATION

MATERIAL NOTE:

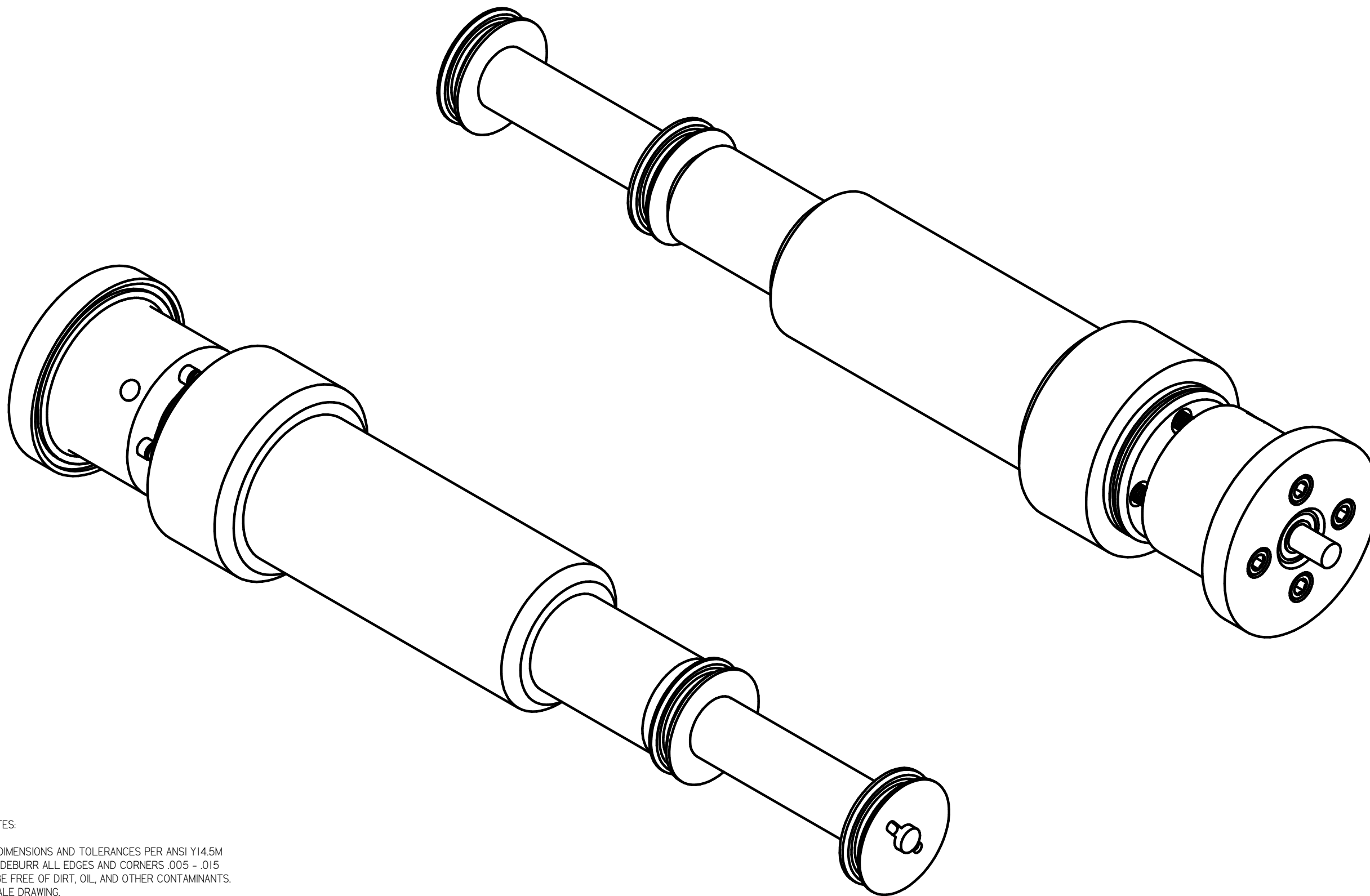
ITEM	QTY	PART NAME	PART NUMBER	MATERIAL
1	1	HOUSING, SPINDLE, X-PORT CONVEYOR	13-9800-013	PET-P WHITE
2	1	O-RING,1.364 I.D.,.070W,-028	30-0008-090	STANDARD
3	1	O-RING, 1.614 I.D., .070W,-030	30-0008-091	STANDARD
4	1	PULLEY, LARGE, DRIVE, X-PORT CONVEYOR	13-9800-011	PET-P WHITE
5	1	CAP, SPINDLE, X-PORT CONVEYOR	13-8800-555	PET-P WHITE
6	1	WASHER,THRUST	90-0001-021	SS
7	1	SHAFT, SPINDLE, X-PORT CONVEYOR	13-8800-546	316 SS
8	1	RING, RETAINING	205-069	STANDARD
9	2	SEAL, SHAFT, .25 I.D. .50 OD'	33-0004-026	STANDARD
10	4	HELICOIL	#8-32 X .328 - 91732A713	18-8 SS
11	4	SHCS	8-32 x 2.0 - 92185A209	316 SS
12	2	BEARING, SLEEVE, 1/4" I.D. X 5/16" O.D.	33-0002-032	STANDARD
13	1	PIN, PRESS	13-8800-126	STANDARD

A

B

C

D



STANDARD NOTES:

- 1. INTERPRET DIMENSIONS AND TOLERANCES PER ANSI Y14.5M
- 2. BREAK AND DEBURR ALL EDGES AND CORNERS .005 - .015
- 3. PARTS TO BE FREE OF DIRT, OIL, AND OTHER CONTAMINANTS.
- 4. DO NOT SCALE DRAWING.
- 5. DIMENSIONS APPLY AFTER FINISH.
- 6. COAT O-RINGS WITH GREASE (P/N 97-0007-002) PRIOR TO INSTALLATION.
- 7. LUBRICATE SHAFT (ITEM # 7), WITH GREASE (P/N 97-0007-002) PRIOR TO INSTALLATION OF SEAL (ITEM # 9) OBSERVE DIRECTION OF SPRING ORIENTATION

MATERIAL NOTE:

TITLE ASSY, CONVEYOR DRIVE SPINDLE, LARGE	DWG.# 12-8800-102	REV.	MATERIAL SEE MATERIAL NOTE	SURFACE FINISH RMS 125 UNLESS NOTED	TOLERANCES UNLESS SHOWN APPLY AFTER FINISH	XX ± .010 XXX ± .005 ANGLE ± 1°	THIRD ANGLE	SCALE 1:1	SHEET 3 OF 3
--	----------------------	------	-------------------------------	--	---	---------------------------------------	-------------	--------------	--------------



A

B

C

D