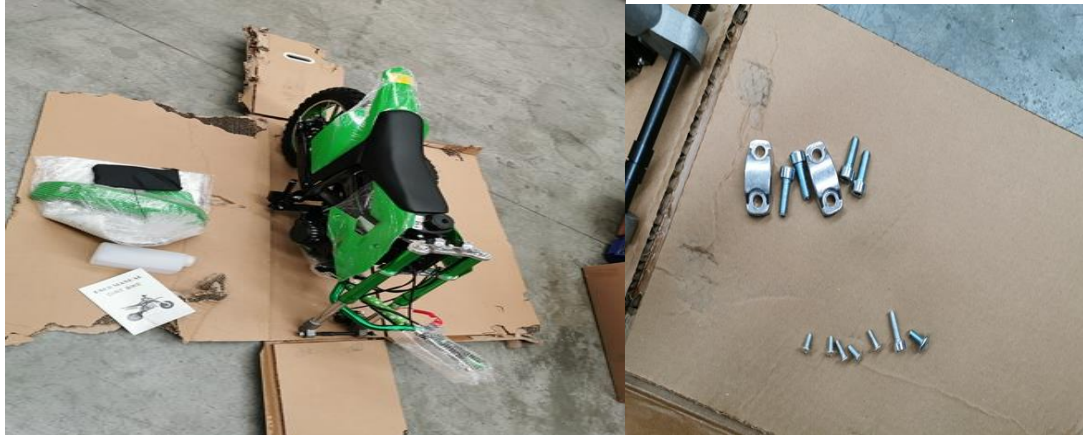


## 49CC Dirt Bike Instruction

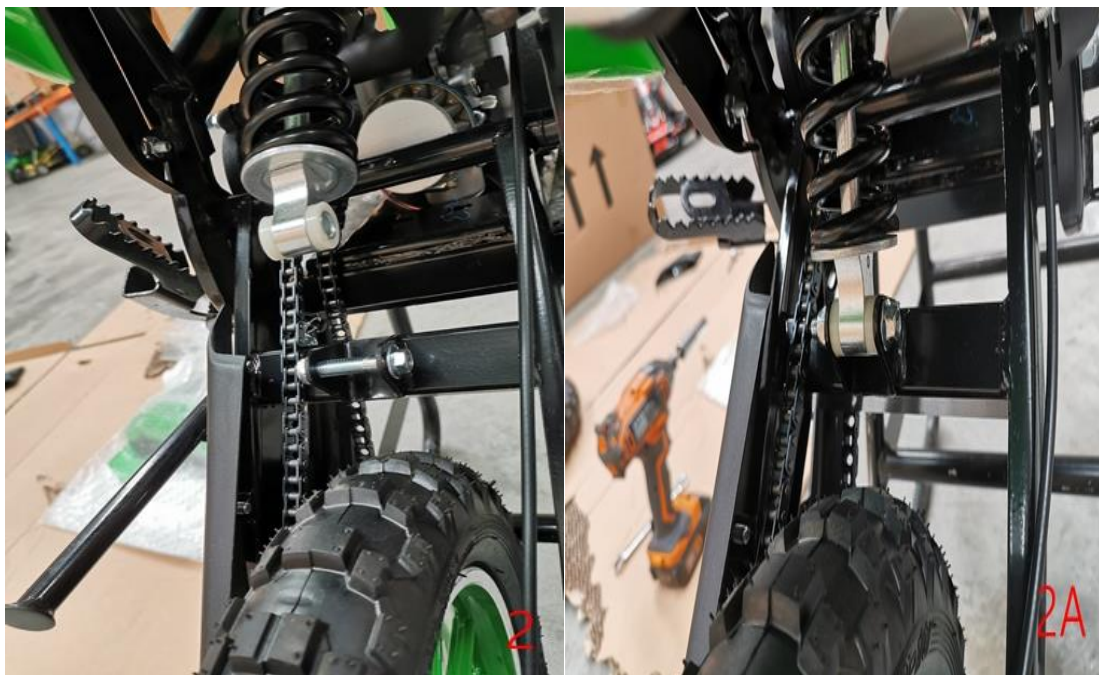
Open the box, get all spares out.



1, Install handlebar (4 bolts with brackets). See pic 1.



2, Install the rear shock. Only one bolt and one nut. See pic 2,2A



3, Install the front guards for front forks(2+3 screws). See pic 3A,3B.



4, Install the front mudguard and number plate. See pic 4A,4B.



5, Install the front wheel. The small spacer is located the disc side. The bigger spacer is on the other side. After tight the nuts, please spin the front wheel to check it. See pic 5A,5B.



6, Assembly is finished. Please tight bolts/nuts of the handle brake levers, adjust the brake cables. Put stickers on the bike.



7. Fill in mixed fuel(25: 1), turn on the key/kill switch, turn on the fuel tap, push the choke lever up, then pull the coil, the bike will be started. Please turn off the choke once the engine is warmed up.

8. This bike is designed for kids under 40kgs. Adult is not allowed to ride it. The clutch will be broken if a person over 40kgs is on.