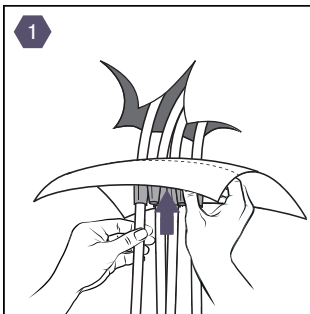
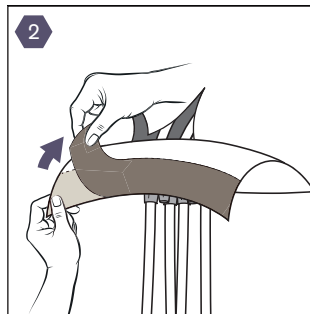


KABSEAL™ 6
PRO**INSTALLATION GUIDE**

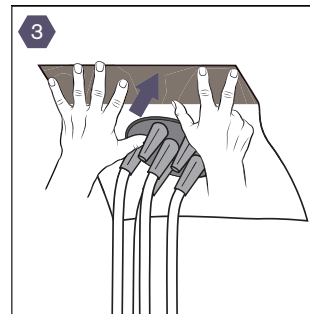
Sealing of multi cables, up to 6



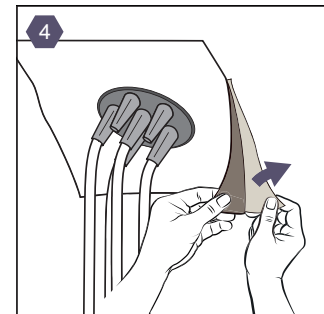
1
Cut the cable at an angle and pierce through the membranes of the sleeve.



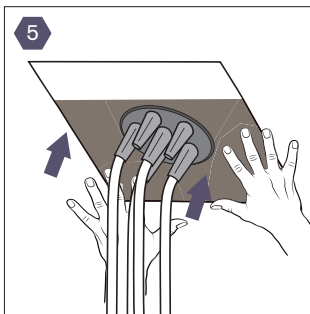
2
Remove the upper part of the protective release backing film.



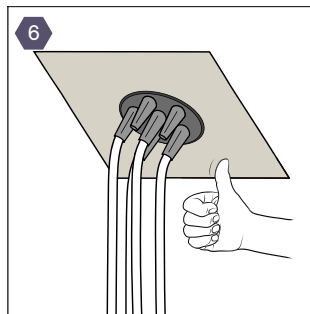
3
Press on the upper part of the sleeve firmly.



4
Remove the lower part of the protective release backing film.



5
Press on the lower part of the sleeve firmly.



6

Instructions for application:

The surface must be clean, dry, and free from dust and grease.
For seamless connections against the substrate, it's recommended to avoid any creases.

Each diameter of the selected sleeve should have the right dimension for the cable bushing. To improve the adhesion of KABSEAL PRO 6 adhesive tapes on porous surfaces and various substrates like concrete, plaster, soft wood fibre boards etc., using ACRAPRIME® LIQUID or ACRAPRIME® SPRAY primer is recommended.

The installation information provided is based on current knowledge and experience.
We reserve the right to make changes to develop and improve as we continually advance quality.

Visit partel.com for the most up-to-date information.