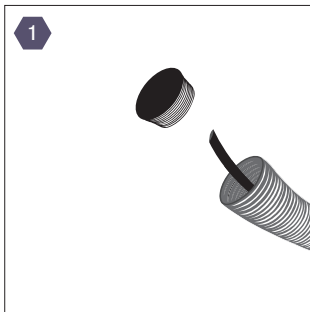


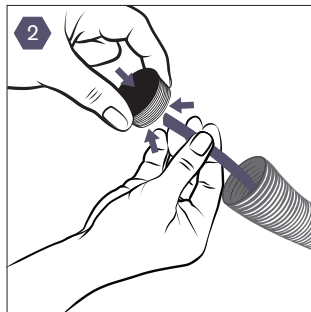
INSTALLATION GUIDE

Sealing of electrical installation pipes

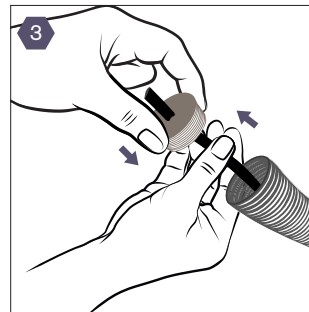
ONE IMPLEMENTATION:



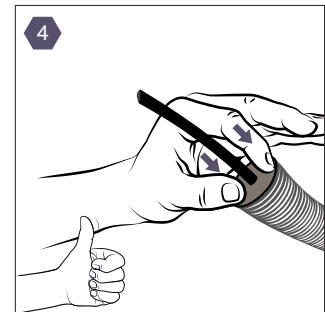
1
Utilise the appropriate KABSEAL CAP for your pipe diameter.



2
Push the cable lying in the pipe through the KABSEAL CAP membrane.

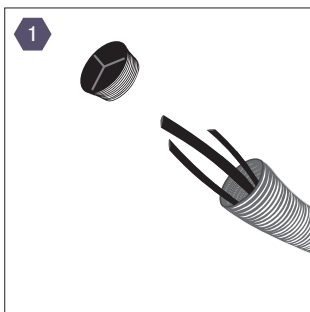


3
Push the KABSEAL CAP onto the pipe opening.

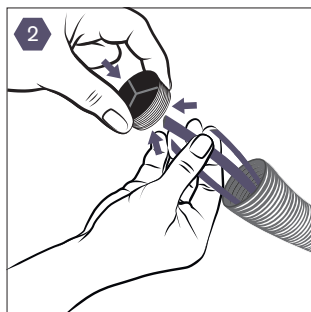


4
Push the KABSEAL CAP into the pipe.

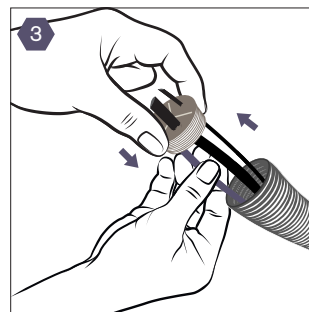
MULTIPLE IMPLEMENTATION:



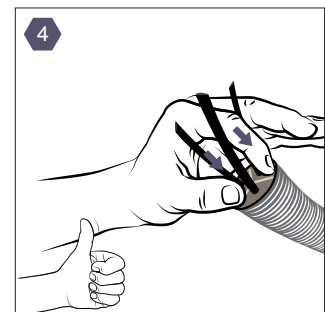
1
Utilise the appropriate KABSEAL CAP for your pipe diameter.



2
Push the cable lying in the pipe through the KABSEAL CAP membrane.



3
Push the KABSEAL CAP onto the pipe opening.



4
Push the KABSEAL CAP into the pipe.