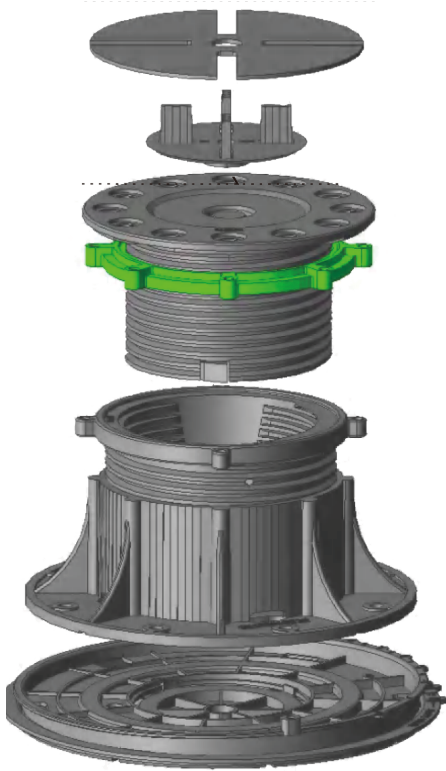


Product Description/Use:

EAD adjustable pedestals provide the ability to build a raised floor up to 13" above an existing solid surface. Pedestals are designed with a top plate that screws down into a base plate. Using pedestal options within desired range, simply rotate the top plate until a desired height is reached and use the green lock washer to lock in place. 6 pedestal options, each with distinct height variations along with an optional extender allow raised floors to be placed at heights from .5"-13". Slope correction plate (sold separately) allow pedestal to stand plumb on sub floor with slopes up to 5 degrees.



Specifications & Properties

Material	Recycled Polypropylene
Recycled Content	100%
Ultimate Compressive Strength	25kN
Max Load	1200 kg/pc
Base Diameter	200 mm
Head Surface Diameter	150 mm
Spacer Tab Height	15 mm
Spacer Tab (joint space) width	1/8"
Marginal Adjustments	1 mm

Pedestal Configuration

Each pedestal includes a base, adjustable head with locking collar, rubber shim and spacer tab.

Sold Separately:

- Slope correction pad
- Rubber base pad
- 1/2" Extension pad

Pedestal Sizes

Type	Height Range
EAD-0	3/4"-1 1/4"
EAD-01	1"-1 5/8"
EAD-1	1 1/2"-2 1/2"
EAD-2	2 1/2"-4"
EAD-3	3 1/2"-7"
Extender (Fits EAD 1-3)	6"