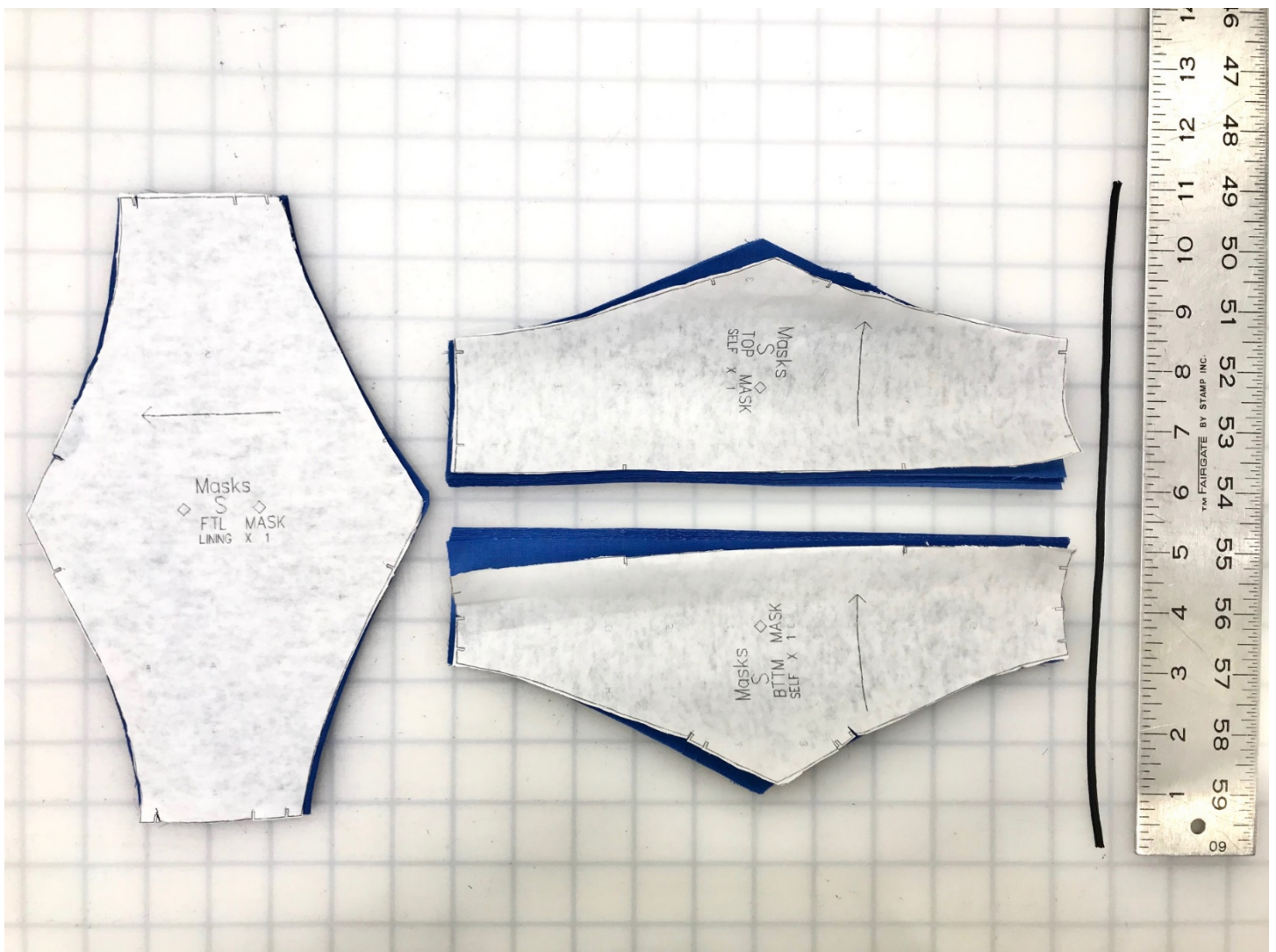


# **AT HOME INSTRUCTIONS FOR MASKS**

nhakchanh

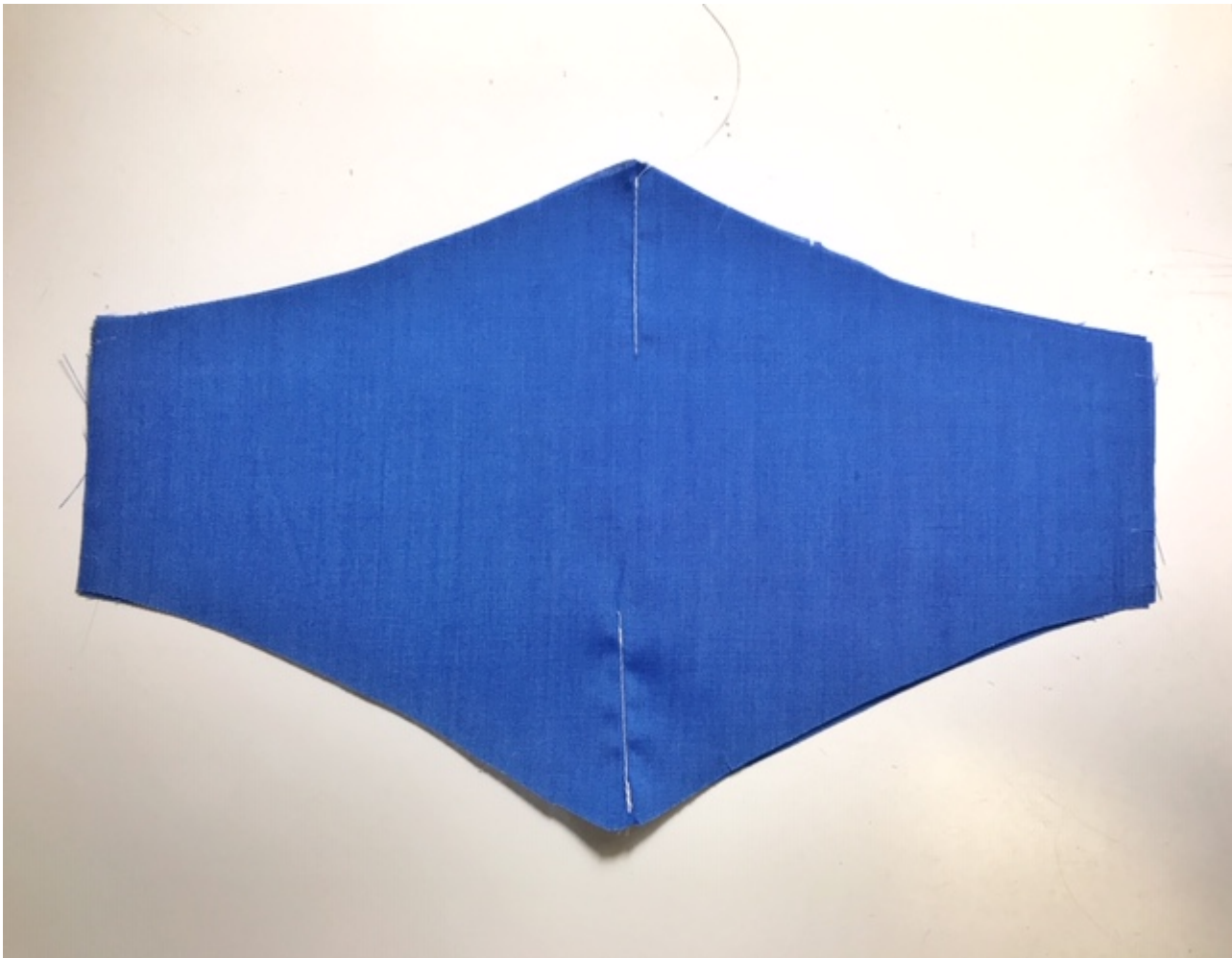
## WHAT YOU WILL NEED:

- MASK PATTERN (AVAILABLE AT [NHAKHANH.COM](http://NHAKHANH.COM))
- TIGHTLY WOVEN COTTON-BLEND FABRIC
  - CUT 2 MASK MAIN
  - CUT 1 MASK TOP LINING
  - CUT 1 MASK BOTTOM LINING
- 11 INCHES OF THING ELASTIC
- 5 INCHES OF GROSSGRAIN
- 4 INCHES OF BENDABLE METAL (PIPECLEANER, WIRE, METAL)
- BENDABLE WIRE
- NON-WOVEN FILTER



**STEP 1:**

- PLACE 2 MAIN MASK PIECES TOGETHER
- SEW A 2 INCH LINE UP CENTER TOP AND BOTTOM



**STEP 2:**

**- FOLD MASK MAIN DOWN CENTER WITH RIGHT SIDES TOGETHER**

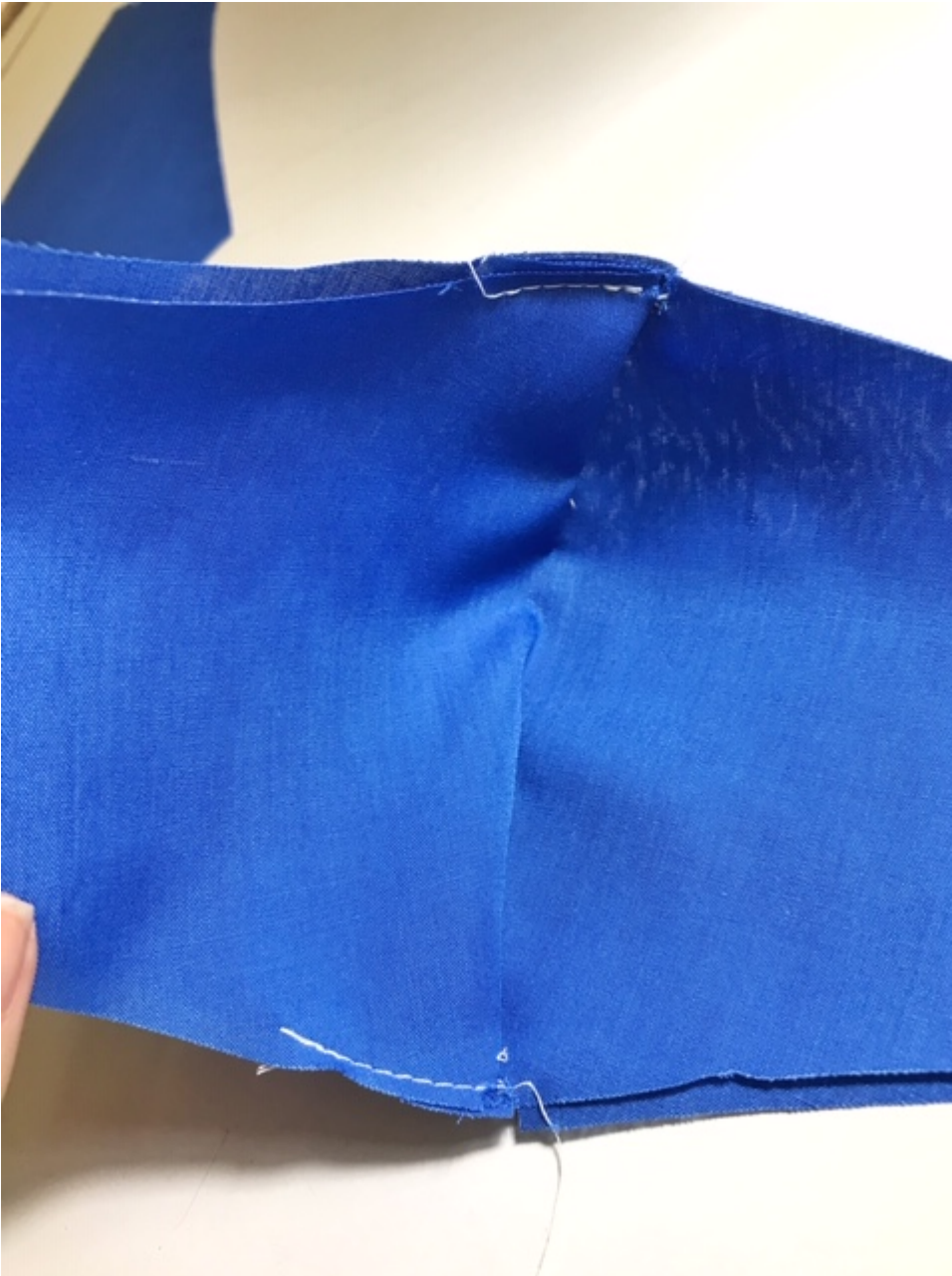
**- CREATE DARTS ON TOP AND BOTTOM**

**(DARTS WILL BE CURVED TO SIT COMFORTABLY ON NOSE AND MOUTH)**



**STEP 3:**

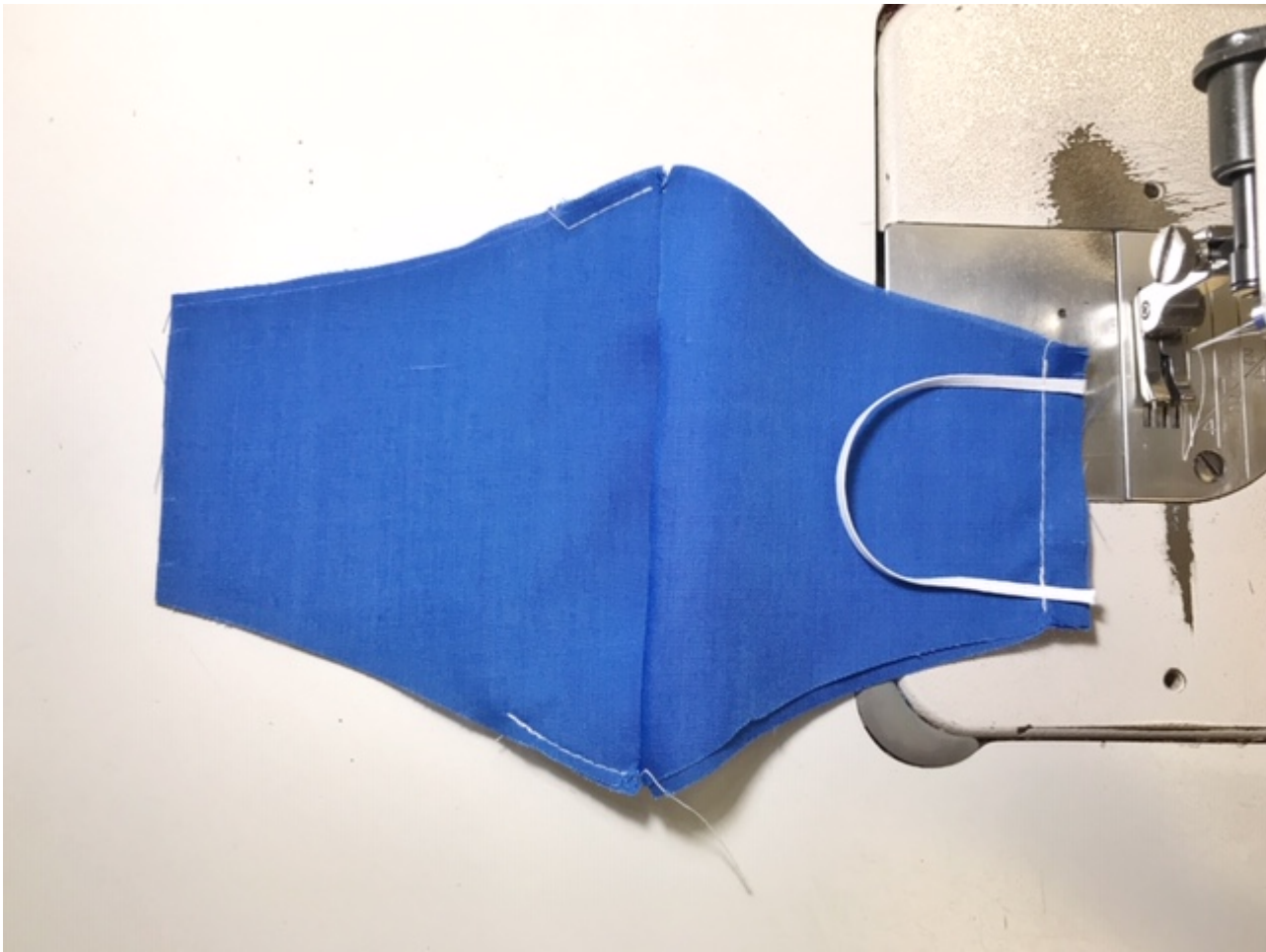
- TURN LINING TO RIGHT SIDE
- PUSH DARTS TO LEFT AND SEW IN PLACE





**STEP 4:**

- CUT 11 INCH ELASTIC IN HALF (5.5 INCHES)
- ON THE RIGHT SIDE, SEW ELASTIC ON MASK MAIN SIDES  $\frac{1}{4}$  IN FROM TOP AND BOTTOM EDGE



**STEP 5:**

- **ROLL HEM THE STRAIGHT EDGE OF THE TOP LINING AND BOTTOM LINING PIECES**



**STEP 6:**

- **WITH RIGHT SIDES FACING UP,**
- **PLACE THE TOP LINING OVER BOTTOM LINING,**  
**MATCHING UP TOP HEM WITH BOTTOM LINING NOTCH AT SIDES**





**STEP 7:**

**- WITH TOP AND BOTTOM LININGS TOGETHER TOP STITCH 2 INCHES ALONG TOP LINING HEM**



**STEP 8:**

- **PUT RIGHT SIDES TOGETHER AND CREATE DARTS ON TOP AND BOTTOM LININGS**



**STEP 9:**

- **WITH RIGHT SIDES TOGETHER, PLACE MASK MAIN AND TOP/BOTTOM LININGS TOGETHER**



**STEP 10:**

- **SERGE ALL OUTER EDGES TOGETHER**



**STEP 11:**

- TURN RIGHT SIDE OUT
- TOP STITCH ALONG ALL EDGES





**STEP 12:**

- TURN GROSSGRAIN EDGES IN ¼ INCH
- PLACE ALONG TOP EDGE OF MASK
- TOPSTICH ALONG TOP AND BOTTOM EDGE OF GROSSGRAIN
- INSERT BENDABLE METAL



**STEP 13:**

- **INSERT FILTER**

