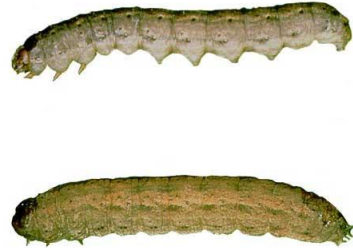




# 農藥標籤檢閱活動

施用資訊	
施用方法	背包型噴霧器
農作物	蕃茄
害蟲	切根蟲
施用面積 (英畝)	2



**CARBARYL INSECTICIDE**

**INTENDED FOR AGRICULTURAL OR COMMERCIAL USE**  
Includes Residential Turf Spot Treatments

**ACTIVE INGREDIENT:**  
Carbaryl (1-naphthyl N-methylcarbamate) ..... 43.0% by wt.

**OTHER INGREDIENTS:** ..... 57.0% by wt.

**TOTAL:** ..... 100.0%  
(Contains 4 Pounds Carbaryl Per Gallon)  
EPA Reg. No. 432-1227

**KEEP OUT OF REACH OF CHILDREN**  
**CAUTION**  
For **MEDICAL** And **TRANSPORTATION** Emergencies ONLY  
Call 24 Hours A Day 1-800-334-7577  
For **PRODUCT USE** Information Call 1-800-331-2867  
See Booklet for Complete Precautionary Statements and Directions for Use.

FIRST AID	
<b>If swallowed</b>	<ul style="list-style-type: none"> <li>Call a poison control center or doctor immediately for treatment advice.</li> <li>Do not induce vomiting unless told to do so by a poison control center or doctor.</li> <li>Have person sip a glass of water if able to swallow.</li> <li>Do not give anything by mouth to an unconscious person.</li> </ul>
<b>If on skin or clothing</b>	<ul style="list-style-type: none"> <li>Take off contaminated clothing.</li> <li>Rinse skin immediately with plenty of water for 15-20 minutes.</li> <li>Call a poison control center or doctor for treatment advice.</li> </ul>
<b>If inhaled</b>	<ul style="list-style-type: none"> <li>Move person to fresh air.</li> <li>If person is not breathing, call 911 or an ambulance, then give artificial respiration, preferably mouth-to-mouth if possible.</li> <li>Call a poison control center or doctor for further treatment advice.</li> </ul>
<b>If in eyes</b>	<ul style="list-style-type: none"> <li>Hold eye open and rinse slowly and gently with water for 15-20 minutes.</li> <li>Remove contact lenses, if present, after the first 5 minutes, then continue rinsing.</li> <li>Call a poison control center or doctor for treatment advice.</li> </ul>

Have the product container or label with you when calling a poison control center or doctor or going for treatment.

**NOTE TO PHYSICIAN:** Carbaryl contains an N-methyl carbamate that inhibits cholinesterase. Drugs like 2-Pam (pyridine-2-aldoxime methiodide) are not recommended. In aid in the confirmation of diagnosis, urine samples should be obtained within 24 hours of exposure and immediately frozen. Analysis will be arranged by Bayer Environmental Science. Consultation on therapy can be obtained at all hours by calling the appropriate emergency number 1-800-334-7577 (E.S.A.).

**Net Contents**  
**2.5 Gallons**  
79672284  
61380416A 161220AV1

## 農藥標籤檢閱活動

	問題	回答
1	農藥的品牌名稱為何？	
2	製造商名稱為何？	
3	有效成分為何？	
4	EPA 登記號碼為何？	
4	警告語為何？	
5	限制進入間隔期 (REI) 多久？	
6	採收前間隔期 (PHI) 多久？	
7	施用率為何？	
8	這次施用需要多少產品？	

# 農藥標籤檢閱活動

## 回答關鍵

	問題	回答
1	農藥的品牌名稱為何？	Sevin SL
2	製造商名稱為何？	Bayer Environmental Science
3	有效成分為何？	Carbaryl (胺甲)
4	EPA 登記號碼為何？	432-1227
4	警告語為何？	小心
5	限制進入間隔期 (REI) 多久？	12 小時
6	採收前間隔期 (PHI) 多久？	3 天
7	施用率為何？	2 夸脫/英畝
8	這次施用需要多少產品？	4 夸脫