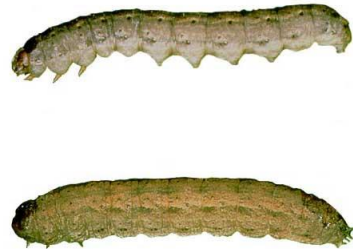



농약 라벨 검토 작업



살포 정보	
살포 방법	등짐 분무기
농작물	토마토
해충	야도충
처리 면적(에이커)	2





Sevin[®] SL

CARBARYL INSECTICIDE

INTENDED FOR AGRICULTURAL OR COMMERCIAL USE
 Includes Residential Turf Spot Treatments

ACTIVE INGREDIENT:
 Carbaryl (1-naphthyl N-methylcarbamate) 43.0% by wt.
OTHER INGREDIENTS: 57.0% by wt.

TOTAL: 100.0%
 (Contains 4 Pounds Carbaryl Per Gallon)
 EPA Reg. No. 432-1227

KEEP OUT OF REACH OF CHILDREN

CAUTION

For **MEDICAL** And **TRANSPORTATION** Emergencies ONLY
 Call 24 Hours A Day 1-800-334-7577
 For **PRODUCT USE** Information Call 1-800-331-2967
 See Booklet for Complete Precautionary Statements and Directions for Use.

FIRST AID	
If swallowed	<ul style="list-style-type: none"> • Call a poison control center or doctor immediately for treatment advice. • Do not induce vomiting unless told to do so by a poison control center or doctor. • Have person sip a glass of water if able to swallow. • Do not give anything by mouth to an unconscious person.
If on skin or clothing	<ul style="list-style-type: none"> • Take off contaminated clothing. • Rinse skin immediately with plenty of water for 15-20 minutes. • Call a poison control center or doctor for treatment advice.
If inhaled	<ul style="list-style-type: none"> • Move person to fresh air. • If person is not breathing, call 911 or an ambulance, then give artificial respiration preferably mouth-to-mouth if possible. • Call a poison control center or doctor for further treatment advice.
If in eyes	<ul style="list-style-type: none"> • Hold eye open and rinse slowly and gently with water for 15-20 minutes. • Remove contact lenses, if present, after the first 5 minutes, then continue rinsing. • Call a poison control center or doctor for treatment advice.

For **MEDICAL** Emergencies Call 24 Hours A Day 1-800-334-7577.
 Rinse the product container or label with you when calling a poison control center or doctor or going for treatment.

NOTE TO PHYSICIAN: Carbaryl contains an N-methyl carbamate that inhibits cholinesterase. Drugs like 2-Pm (pyridine-2-aldoxime methiodide) are not recommended. To aid in the confirmation of diagnosis, urine samples should be obtained within 24 hours of exposure and immediately frozen. Analysis will be arranged by Syngenta Environmental Science. Consultation on therapy can be obtained at all hours by calling the appropriate emergency number 1-800-334-7577 (U.S.A.)

Net Contents
2.5 Gallons
 79672284
 61380416A 161220AV1

농약 라벨 검토 작업

	질문	대답
1	농약 상표명은 무엇입니까?	
2	제조업체 이름은 무엇입니까?	
3	활성 성분은 무엇입니까?	
4	EPA 등록 번호는 무엇입니까?	
4	신호어는 무엇입니까?	
5	출입 제한 기간(REI)은 얼마나 됩니까?	
6	수확 전 기간(PHI)은 얼마나 됩니까?	
7	살포 비율은 어떻게 됩니까?	
8	살포하는 데 제품이 얼마나 필요합니까?	

농약 라벨 검토 작업

해답

	질문	대답
1	농약 상표명은 무엇입니까?	Sevin SL
2	제조업체 이름은 무엇입니까?	Bayer Environmental Science
3	활성 성분은 무엇입니까?	카바릴
4	EPA 등록 번호는 무엇입니까?	432-1227
4	신호어는 무엇입니까?	주의
5	출입 제한 기간(REI)은 얼마나 됩니까?	12시간
6	수확 전 기간(PHI)은 얼마나 됩니까?	3일
7	살포 비율은 어떻게 됩니까?	2쿼트/에이커
8	살포하는 데 제품이 얼마나 필요합니까?	4쿼트