

our mini guide for...

Dishwasher Liquid



DELPHIS*

*eco PROFESSIONAL CLEANING

Application and Directions

Pour into the machines automatic dosage system and use in accordance with the manufacturer's instructions. Dose according to the degree of soil and water hardness. Adjust to maximise performance:

- Soft water:** 0.10 - 0.25%
- Medium water:** 0.25 - 0.50%
- Hard water:** 0.50 - 1.00%

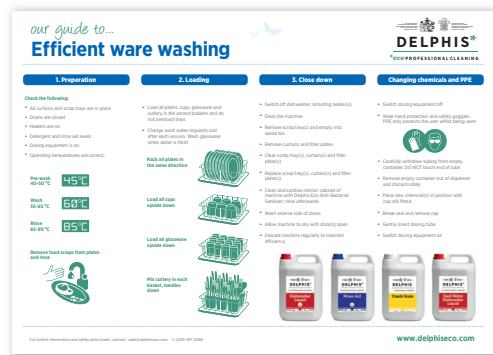
More effective cleaning can be achieved at higher temperatures. Results can be enhanced by using Delphis Eco Rinse Aid.

NB. Not suitable for dishwashers: lead crystal, decorated glassware, antique painted porcelain, bone, coloured or anodised aluminium, items with gold or other precious metal decoration.

Proper dosage saves cost and minimises environmental impact:

Using this EU Ecolabelled product according to the dosage instructions will contribute to the reduction of water pollution and waste production. Delphis Eco encourage proper dosage and users to reduce waste going to land fill by recycling empty bottles.

for more info see...



Main Use



COSHH



Health and Safety

Use only as directed. Do not mix different cleaners. Seek medical attention if in discomfort or if any symptoms persist.

Eye Contact: Avoid contact with eyes, if product gets into eyes, rinse with water.

Skin Contact: Avoid contact with skin, if product gets onto skin wash with water and remove any contaminated clothing.

Ingestion: Do not drink, if swallowed drinking water may be beneficial, do not induce vomiting.

Inhalation: Avoid inhaling product, move to fresh air if in discomfort.

don't forget PPE..

Always wear the correct protective clothing if required. For best results we recommend using the correct dosing and colour coded microfibre cloths - please ask your manager for details.

how to dispose...

Dirty, used washing solution should be disposed of via drains that lead only to foul sewers. Do not allow detergent solutions to contaminate surface water drains. In the event that concentrated product should need to be disposed of, run small amounts to foul waste, diluting with plenty of water. For larger quantities, seek advice on disposal from the local authorities. Delphis Eco products are packed in fully recyclable containers. Empty containers should be rinsed thoroughly, the washings being run to foul waste. The containers may then be sent for recycling. Dispose of all waste in a responsible manner. Be aware of the environment.

