

Operating Manual



Please read these Operating Instructions before using your FreedomChair

PRECAUTIONS

Please read the instructions before using the chair in order to operate and maintain it properly.



PLEASE PAY ATTENTION TO THE FOLLOWING CONTENT WITH THESE WARNING SYMBOLS.



FAILURE TO TAKE PRECAUTIONS COULD RESULT IN SERIOUS INJURIES.



IT CAN ALSO DAMAGE OR DECREASE THE LIFE EXPECTANCY OF THE CHAIR.

Contents

1	Introduction.....	4
2	Specifications.....	5
3	Unfolding & Folding.....	8-9
4	Installing the Joystick Controller.....	10
5	Lifting the Armrest.....	11
6	Manual Operation.....	11
7	Joystick Operation.....	12
8	Charging Instructions.....	13-14
9	Transport & Storage.....	14
10	Safety Guide.....	15-21
11	Appendix.....	22

1 Introduction

Thank you for choosing FreedomChair which will provide you with years of dependable service with proper use and care.

It is important to read through this manual before operating your FreedomChair to become familiar with its features as well as its limitations and safety information. You will find the operation and care of your FreedomChair very simple and easy, but should you have any questions, please contact the reseller from where you purchased the chair.

Getting to know your FreedomChair



2 Specifications

Details for each model of FreedomChair are shown in separate tables.

A06 Specifications	
Net weight of chair	22.8kg
Maximum weight capacity	245lbs/110kg
Seat dimensions	17" x 17"/43cm x 43cm
Drive wheels	10" PU tyre - Front wheels 8" PU tyre
Driving Range	With 1 battery up to 9 miles/15km - With 2 batteries up to 18 miles/30km
Battery capacity	24V 10AH per battery
Motors	2 x 200W brushless motors with electromagnetic braking
Maximum speed	Up to 4 mph/6.5 kph
Gradient	8 degrees
Suspension	Spring absorber
Length	Open: 37.8" / 96cm - Folded 23.2" / 58.9cm
Width	Open: 23.2" / 58.9cm - Folded 27.2" / 69cm
Height	Open: 36.8" / 93.5cm - Folded 13.4" / 34cm

A06L Specifications	
Net weight of chair	25.7kg
Maximum weight capacity	245lbs/110kg
Seat dimensions	19" x 17.5" / 49cm x 44cm
Drive wheels	12.5" air tyre - Front wheels 8" PU tyre
Driving Range	With 1 battery up to 9 miles/15km - With 2 batteries up to 18 miles/30km
Battery capacity	24V 10AH per battery
Motors	2 x 300W brushless motors with electromagnetic braking
Maximum speed	Up to 4 mph/6.5 kph
Gradient	14 degrees
Suspension	Spring absorber
Length	Open: 37.8" / 96cm – Folded: 23.2" / 58.9cm
Width	Open: 23.2" / 58.9cm – Folded: 27.2" / 69cm
Height	Open: 36.8" / 93.5cm – Folded: 13.4" / 34cm

2 Specifications (continued)

Details for each model of FreedomChair are shown in separate tables.

A08 Specifications	
Net weight of chair	26.7kg
Maximum weight capacity	350lbs / 160kg
Seat dimensions	19" x 17.5" / 49cm x 44cm
Drive wheels	10" PU tyre - Front wheels 8" PU tyre
Driving Range	With 1 battery: up to 9 miles/15km – With 2 batteries: up to 18 miles/30km – With 3 batteries: up to 27 miles / 45km
Battery capacity	24V 10AH per battery
Motors	2 x 250W brushless motors with electromagnetic braking
Maximum speed	Up to 4 mph/6.5 kph
Gradient	10 degrees
Suspension	Spring absorber
Length	Open: 39.4" / 100cm – Folded: 23.2" / 58.9cm
Width	Open: 23.2" / 58.9cm – Folded: 27.2" / 69cm
Height	Open: 35" / 89cm – Folded: 12.6" / 32cm

A08L Specifications	
Net weight of chair	28.5kg
Maximum weight capacity	350lbs / 160kg
Seat dimensions	19" x 17.5" / 49cm x 44cm
Drive wheels	12.5" air tyre - Front wheels 8" PU tyre
Driving Range	With 1 battery: up to 9 miles/15km – With 2 batteries: up to 18 miles/30km – With 3 batteries: up to 27 miles / 45km
Battery capacity	24V 10AH per battery
Motors	2 x 300W brushless motors with electromagnetic braking
Maximum speed	Up to 4 mph/6.5 kph
Gradient	14 degrees
Suspension	Spring absorber
Length	Open: 40" / 102cm – Folded: 25.2" / 64cm
Width	Open: 24.4" / 62cm – Folded: 29" / 74cm
Height	Open: 35.4" / 90cm – Folded: 13" / 33cm

3 Contents of Packaging

Your FreedomChair will arrive carefully packaged in a cardboard box. We suggest that two people are available to remove the packaging and set up the FreedomChair for the first time.

1. Carefully open the top of the box then turn the box on its side for easier removal of the contents.
2. Once all packaging has been removed, you will find the following components:



4. Unfolding the Chair

A) Unfolding - Step 1

Hold the top of the backrest and pull up while holding down on the seat to expand the chair and complete the opening.



B) Unfolding - Step 2

Lock the safety clasp.



5. Folding the Chair

A) Folding - Step 1
Open the safety clasp.



B) Folding - Step 2
While one hand holds the seat and the other holds the backrest, push the backrest forwards and downwards, folding the chair.

Hold backrest bar



Hold the seat to fold

4 Installing the Joystick Controller

Step 1

Insert the controller joystick into the armrest tube and tighten the knob to fix it in position.



Step 2

Connect the wire from the Joystick to the connector which is secured under the armrest, taking care to line up the pins properly so that they do not get bent, broken or damaged.

The connectors are designed to only fit together in one position. Gently rotate both parts until they can be pushed together. Rotate the locking ring to secure both parts.

NOTE: DO NOT force the connections together or you may bend or break the pins.



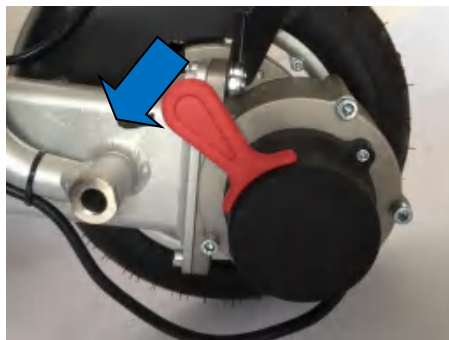
5 Lifting the Armrest

Under each armrest is a rotary knob which can be turned to release or secure the armrest lock. This allows the armrest to be raised for easy side transfers or to clear the joystick when pulling up to a table.

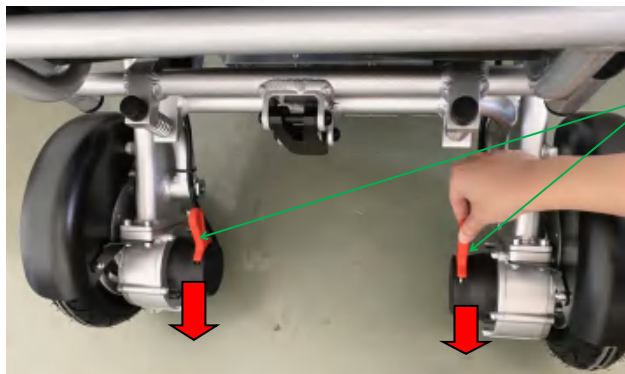


6 Manual Mode Operation

The chair can be pushed by an Attendant in freewheel mode. Push forward on both of the red motor levers to disengage the electromagnetic brakes.

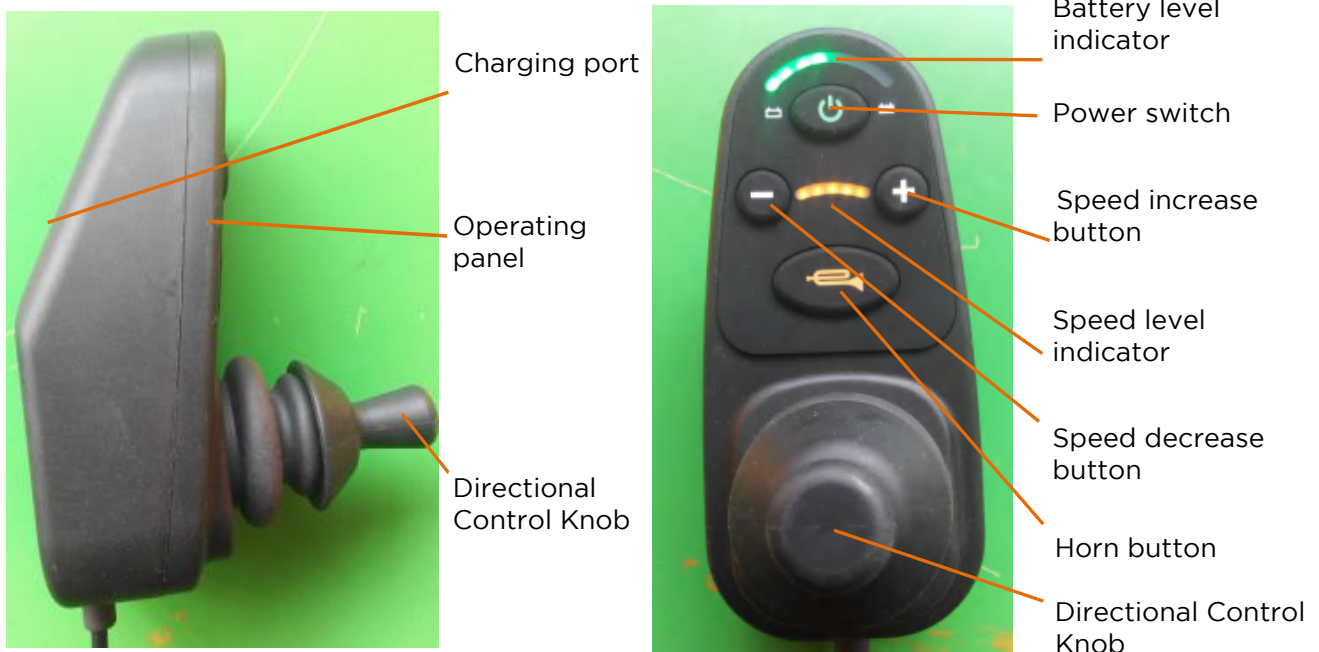


In normal powered mode, without an Attendant pushing the chair, both red motor levers should be pulled back to engage the electromagnetic brakes. Both wheels will now lock, holding the chair on the brakes.



Pull back both red motor levers for normal powered mode.

7 Joystick Operation



Joystick: controls the chair's direction and speed.

Before entering or exiting from the chair, ensure that the Power is turned OFF. This will prevent unintentional movement of the chair.

- Power on: press the Power switch to turn on the power
- Power off: press the Power switch to turn off the power
- Battery level indicator: all lights on indicate a full battery. The number of lights illuminated decreases as the battery power is consumed.
- Speed increase button. Press to increase the maximum speed of the chair.
- Speed decrease button. Press to decrease the maximum speed of the chair.
- Speed level indicator. All lights on indicate that the maximum speed has been set.
- Horn Button: sounds when the user presses the button.

8 Charging Instructions

The battery requires charging once every three months, otherwise it could lead to over-discharge damage.

Charging Method 1 (Joystick charging):

1. Turn the power OFF using the green button on the Joystick.
2. Plug the charger's power cable into the battery charger and then into a mains wall outlet. **TURN OFF** the mains power.
3. Connect the round metal plug from the charger's lead into the socket on the underside of the Joystick (see below). **NOTE:** The plug is designed to only connect in one position. Gently rotate the plug until it can be pushed into the socket. **DO NOT** force the plug.
4. Now **TURN ON** the mains power.
5. Allow your chair to charge for 5 hours/battery (10 hours/ two batteries) or when the light on the charger turns green, which means your battery/ies are fully charged.
6. **BEFORE** disconnecting the charger's plug, **TURN OFF** the mains power.



Joystick Charger Port



Front of Charger

Charger Light illuminates after plugging in the charger. Light color indicates charging state:

RED - battery is fully drained

ORANGE - battery is charging.

GREEN - battery is fully charged.



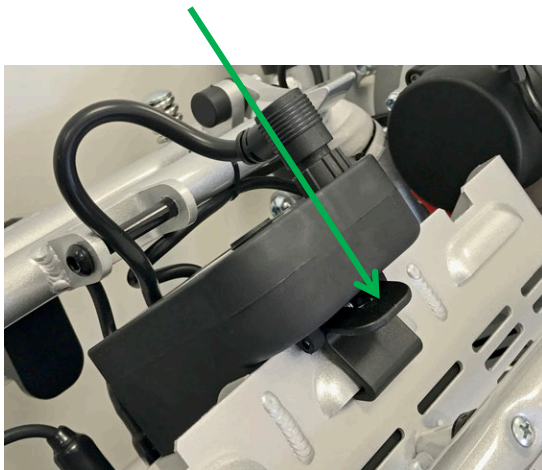
Back of Charger with an explanation of what the Charger's light colour indicate.

Charging Method 2 (offboard charging):

NOTE: BEFORE removing a battery and disconnecting any cables, please note all connections so that reconnecting the cables is done in the same way. A Guide to correctly connecting batteries for each model of FreedomChair is shown in the Appendix section.

FreedomChair batteries can easily be removed from the chair. This may be required before the chair is stored in the hold of an aircraft for example, or more commonly if the batteries require charging in a different location from the chair. You have the option of charging the batteries individually, or using the Battery Parallel Connection Cable to charge multiple batteries.

Battery Release Clip is located under the front of the battery.



Battery Parallel Connection Cable

Offboard Charging Cable



9 Transport & Storage

- To lift the chair, stand it upright when it is folded.
- The battery should be fully charged and the chair should be placed in a cool, dry, and ventilated place, especially if stored for a long period.

10 Safety Guide



- The user must be of sound mind and judgment.
- The user must read this User Manual before operating the chair and get familiar with its components and features.
- The user should practice driving skills with assistance on open, flat, and safe grounds before normal use.



- To move Forward and for Parking.
To move forward, push the joystick gently forward. To stop, release the joystick.



- Moving backwards
To move backwards, push the joystick gently back. The user must be aware of what is behind them before manoeuvring backwards to avoid collisions.



- Turning
To turn, push the joystick to the left or right. and be aware of what is to the left or right to avoid collisions.



- Driving on bends
Lightly push the joystick in the direction of the bend. Practice speed control.



- Practice avoiding obstacles
Lightly push the joystick in either direction to avoid and manoever around the obstacles
Practice speed control.



- Driving More Quickly
Push the joystick all the way in the direction you want to go. Pull the joystick back to the middle if you do not feel you are 100% in control.



- Driving Uphill
Keep your body tilted forward to keep the center of gravity stable. Drive slowly. We recommend the slope be less than 9 degrees for optimal performance.



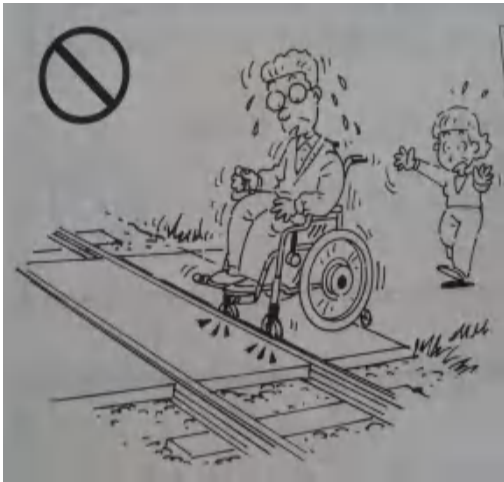
- Entering & Exiting a passenger lift
The user should pay attention to the opening and closing intervals of the lift door to avoid collisions while entering or exiting the lift.



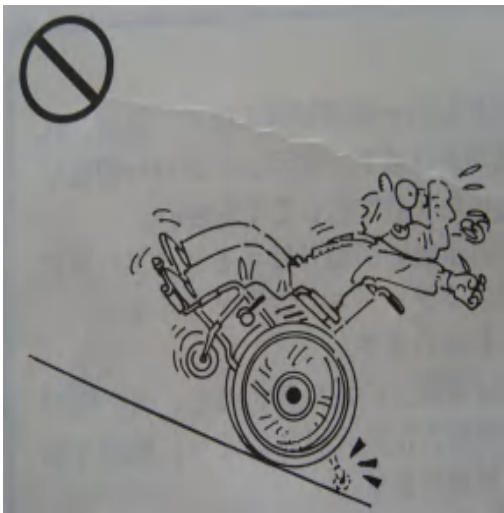
- Driving on pavements
The user should stay on the pavement and avoid entering the motor vehicle lane unless to cross the street. Pay attention to obstacles and avoid contact with them.



- Crossing the street
Pay attention to avoid vehicles and only cross when you are allowed to. Look for dropped curbs where available and drive slowly over the curb. To return to the pavement, look for a dropped curb or one that is no more than 3cm high.



- Driving over train/railroad tracks
Don't cross railroad/train tracks alone, we highly recommend you should be accompanied by an Attendant.

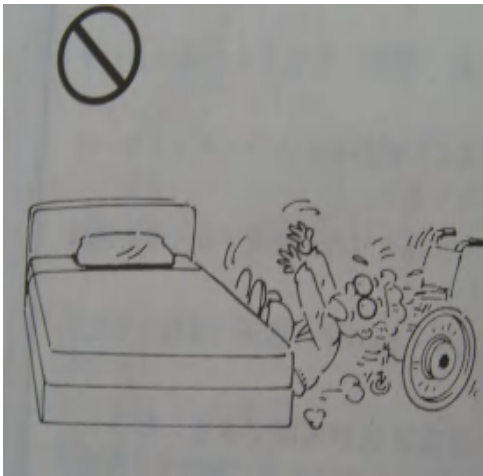


- Driving on a steep incline could result in the chair rolling over or a serious accident.



- Driving over a high curb/step (more than 3cm) could result in in the chair rolling over or a serious accident.





- We recommend that the user has assistance getting out of and into the chair. Move the armrests and footrest out of the way before entering and exiting the chair.



- Do not attempt to repair the product on your own. It may cause permanent damage to the chair and could put yourself at risk of injury or death. It should be repaired by a professional technician.



- Do not allow children access to the chair.



- Do not hose down the chair with water or any liquids. It will cause damage to the chair and could also harm or endanger your personal safety. To clean the chair, wipe down with a damp cloth.



- Do not leave the battery or electrical components of the chair in a car that is exposed to direct sunlight. It will cause permanent damage. Also, keep it away from fire and all heat sources.



- Do not allow children access to the battery or electrical components to the chair. It should be stored in a cool, dry area that children do not have access to.



- Do not store the battery in direct sunlight. Please store in a dry, cool, and ventilated area that children don't have access to. Also, do not store in a severely cold environment. It will damage and decrease the life of the battery.

11 Appendix

1. Warranty

Part	Coverage	Remarks
Frame	2 Years	Non-deliberate damage
Motor	2 Years	Non-deliberate damage
CPU	1 Year	Non-deliberate damage
Battery	1 Year	Non-deliberate damage
Joystick	1 Year	Non-deliberate damage
Wearable Parts	3Months	Non-deliberate damage

2. UK & Ireland Distributor

Proactive Mobility Ltd

Silverstone House
 Kineton Road
 Gaydon
 Warwickshire
 CV35 0EP

Phone: 0330 555 5225
 Email: info@proactivemobility.com
 Web: www.e-goes.co.uk

3. Retailer Details

FreedomChairs

Battery Installation

Connect multiple batteries as shown in the photographs

A06 with 1 battery



A06 with 2 batteries



A08 & A08L with 1 battery



A08 & A08L with 2 batteries



A08 & A08L with 3 batteries



Check battery clips under frame are secure

