

Enviro Crack Sealing Unit

Basic operation guide

1. Ensure sure crack sealing wand and hose is connected together.
2. Connect hose onto fluid outlet (T piece on top of pressure pot lid)
3. Remove the cover from the pressure pot by unscrewing all 4 nuts that locks the lid to the pressure pot.
4. Take out the metal canister from the unit and keep it aside at this point.
5. Obtain a pail of Gripset B26 and remove lid.
6. Mix product well until a fluid, homogenous consistency is formed.
7. Place the pail of B26 into the pressure cylinder. (Do not pour the product in - place the whole pail inside)
8. Squeeze the handle of pail within to make sure that once the pot lid is placed back and nuts are tithed, no air can escape when pressurised
9. Should this occur, release all air from the unit and repeat the process.

Operating Crack Sealing Unit

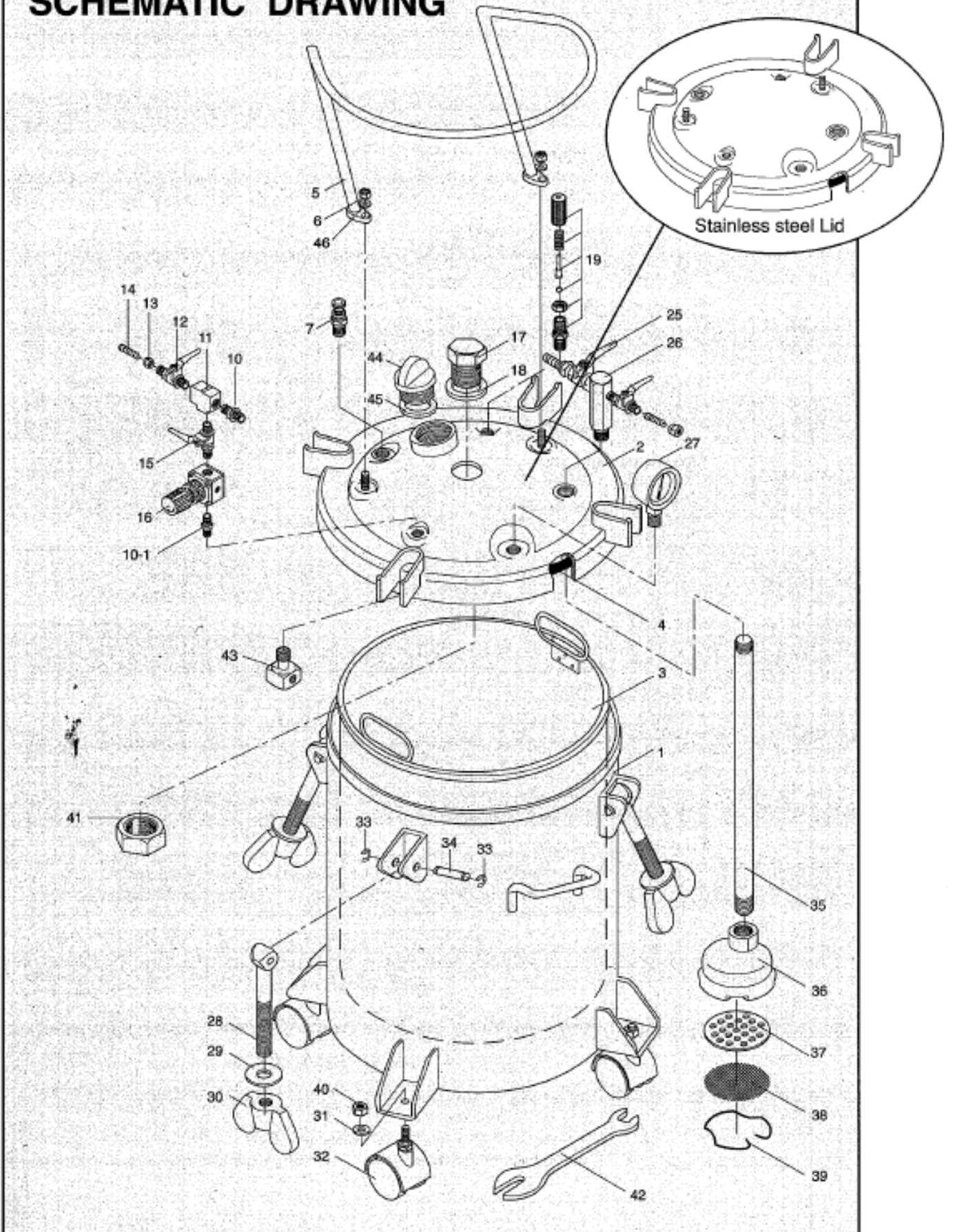
1. Source a ¼ inch male screw on fitting (available from general hardware stores etc)
2. Screw the fitting onto the red tagged air inlet T valve.
3. Take the end of the compressor air hose (female end) and connect into the ¼ inch male fitting.
4. Open the red tagged air inlet T valve (make sure other red tagged taps are shut).
5. Start compressor and fill unit with air.
6. Observe pressure gauge and take pressure to 60psi (regulate if needed with black regulator knob).
7. Once pressure level is reached, shut air inlet valve and disconnect air hose.
8. Sufficient pressure should be maintained in unit until to dispense a complete 15L pail of Gripset B26
9. Open the hose line to allow product to travel through hose and wand.
10. This may take up to a few minutes as product is quite viscous.
11. Crack sealing application can now commence.

Cleaning the Unit

1. Release air from the unit by opening the air release valve.
2. Shut all the red tagged taps.
3. Undo all 4 nuts and remove cover off unit.
4. Remove Gripset B26 pail from inside unit
5. Fill the silver canister up with water.
6. Repeat process for crack sealing as detailed above and flush system with water until all water has been dispelled and water runs clear.

IMPORTANT The above cleaning process must be completed immediately after every use to avoid blockages caused by product drying within the lines.

ECONOMY TYPE SCHEMATIC DRAWING



| PARTS NO. | DESCRIPTION | Q'TY |
|--------------|--|------|
| ※ 1 | Main body | 1 |
| ※ 2 | Lid assembly | 1 |
| 3 | Material tank (Not available for stainless tank) | 1 |
| 4 | Gasket | 1 |
| ※ 5 | Parts guard | 1 |
| ※ 6 | Hexagon nut | 2 |
| 7 | Release valve | 1 |
| 10 | Air inlet adapter | 1 |
| ※ 10-1 | Air adapter | 1 |
| 11 | Branch tee | 1 |
| 12 | Air outlet cock | 1 |
| 13 | Nut (Not available for stainless tank) | 1 |
| 14 | Air outlet (Not available for stainless tank) | 1 |
| 15 | Air inlet cock | 1 |
| 16 | Pressure regulator | 1 |
| 17 | Centering guide (Not available for stainless tank) | 1 |
| 18 | Seal ring (Not available for stainless tank) | 1 |
| 19 | Safety valve | 1 |
| ※ 25 | Material outlet cock | 2 |
| ※ 26 | Material outlet adapter | 1 |
| 27 | Pressure gauge | 1 |
| ※ 28 | Swing bolt | 4 |
| ※ 29 | Washer | 4 |
| ※ 30 | Thumb nut | 4 |
| 31 | Washer | 4 |
| 32 | Moving wheel | 4 |
| ※ 33 | C - snap ring | 8 |
| ※ 34 | Cotter | 4 |
| ※ 35 | Fluid tube | 1 |
| 36 | Absorption apparatus | 1 |

| PARTS NO. | DESCRIPTION | Q'TY |
|--------------|--|------|
| 37 | Filter base | 1 |
| ※ 38 | Material filter | 1 |
| ※ 39 | Snap ring | 1 |
| 40 | Hexagon nut | 4 |
| 41 | Heavy hexagon nut (Not available for stainless tank) | 1 |
| 42 | Spanner | 1 |
| 43 | Air flow guider | 1 |
| 44 | Cap screw (Not available for stainless tank) | 1 |
| 45 | Seal ring (Not available for stainless tank) | 1 |
| ※ 46 | Spring washer | 2 |