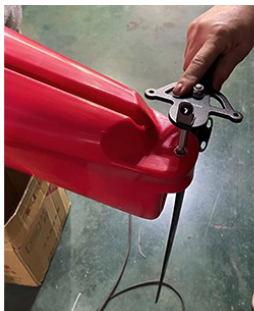
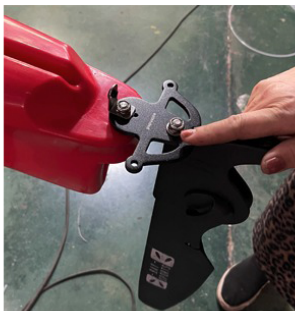


# HOW TO SETUP YOUR RUDDER

For Expedition Zero/1/2/3, Dreamer 4.5/XL and Hug XL kayaks



1. Insert the rudder at a 90° angle



2. Turn the rudder so it is straight



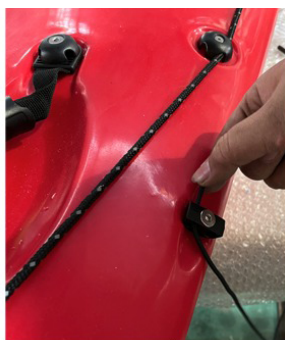
3. Feed the rope through hole A, B then C.



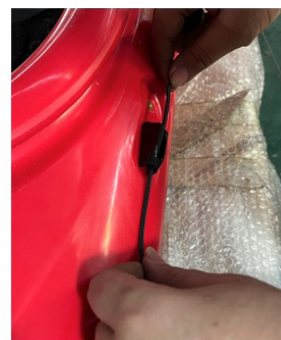
4. Tie a knot once the rope is tight



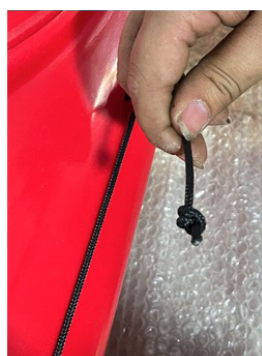
5. The rudder assembly is now complete.



6. Take the other end of the rope and feed through the 3 buckles.



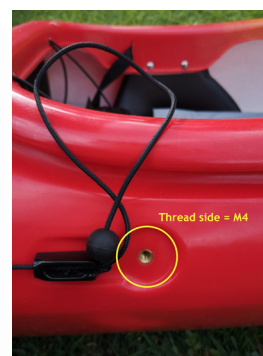
7. Feed the rope through the ball.



8. Then tie a knot.



9. Finally, slide the ball down to the knot in the rope.



10. No fittings required to attach here, this is a spare screw insert

Finished assembly should look like this. Cord and ball rest inside cockpit.

