

- BAY - SPORTS

Pedal Drive System



USER GUIDE

TABLE OF CONTENTS

WELCOME	4
FLAP PEDAL DRIVE ASSEMBLY For Pedal Pro Fish 2.5m, 2.9m, 3.4m, 3.6m, 3.9m and 4.1m	6
PROPELLER PEDAL DRIVE For Pedal Pro Fish 3.9m & 4.3m	10
PROPELLER PEDAL DRIVE ASSEMBLY For Pedal Pro Fish 3.6m	14
PROPELLER PEDAL DRIVE For Pedal Pro Fish 3.2m & 4m XL	22
MAINTENANCE AND SERVICES	26
WARRANTY & LIABILITY	28

WELCOME

Thank you for purchasing a Pedal Drive System. We hope you thoroughly enjoy this product. Please take time to read the content in this manual in order to optimise your satisfaction of this product. We believe that a Bay Sports kayak offers incomparable value.

Visit our website at any time for more information.

baysports.com.au



FLAP PEDAL DRIVE

For Pedal Pro Fish 2.5m, 2.9m, 3.4m, 3.6m, 3.9m and 4.1m.



- 011 PEDAL/CRANK ASSY. (R)
- 012 PEDAL/CRANK ASSY. (L)
- 013 PEDAL ONLY (R)
- 014 PEDAL ONLY (L)
- 015 PEDAL STRAP (R)
- 016 PEDAL STRAP (L)
- 017 CAP - PEDAL
- 018 NUT
- 019 WASHER

- DRIVE SEAL
- 081 STD
- 082 I - SERIES
- 083 SCREW
- 084 WASHER

- 085 DRUM
- 086 DRUM SHAFT
- 087 CHAIN ASSY
- 088 BOLT
- 0891 IDLER PULLEY
- 0892 IDLER CABLE
- 0893 NUT
- 0894 SET SCREW
- 0895 PULLEY SHAFT

- 02 PEDAL ADJ ASSY INCLUDES:
- 021 PLASTIC HANDLE
- 022 PIN
- 023 SCREW
- 024 SPRING
- 025 ALLEN WRENCH

- 031 OUTHAUL BLO
- 032 CLEVIS PIN
- 033 LOCK RING
- 034 SPROCKET GUARD FWD
- 035 SCREW

- 041 SPINE
- NEW 2019

- 051 SPROCKET S1 THREADED (W/ FWD GUARD)

- 042 SPROCKET SHAFT
- 043 SET SCREW

- 061 STANDARD FIN

- 052 MAST S1 THREADED
- 053 MAST / ST TURBO S1 THREADED
- 054 LOC-TITE .5ML

UPDATE KIT - S1 SPROCKET
 (2 S1 SPROCKETS AND 2 S1 MASTS)
 0511 S1 STANDARD MAST KIT
 0512 S1 TURBO MAST KIT

Spare parts includes
 2 x fins + 1 x grub screw

The pedal drive unit is
 constructed of
 aluminium whilst the
 mast and chain are
 stainless steel
 construction

ASSEMBLY



1. Remove all packaging



2. Remove the bolt from drive seal



3. Press the red reinforcement button



4. Slide the foot pedal down until the holes line up



5. Tighten the bolt



6. Insert bolt and secure by hand or spanner



7. Finished product

[Click here to watch step-by-step video assembly guide](#)

PROPELLER PEDAL DRIVE

For Pedal Pro Fish 3.9m & 4.3m.



The pedal drive unit comes in this robust box to avoid shipping damage. It comes mostly pre-assembled so you can get out on the water sooner!

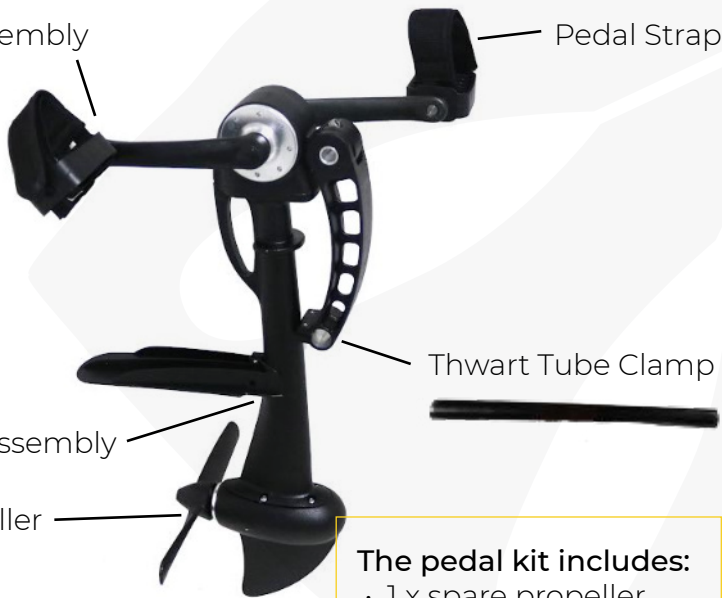


The pedal parts bag includes:

- 1 x 4mm Hex Wrench
- 1 x 8mm Hex Wrench
- 2 x Crank Arm Bolts w/ black caps
- 1 x Spare Shear Pin

Crankarm Assembly

Pedal Strap



Thwart Tube Clamp

Main Pedal Assembly

2-blade propeller

The pedal kit includes:

- 1 x spare propeller
- 2 x spare shear pins

ASSEMBLY

STEP 1. INSTALL THWART TUBE



Get the thwart tube and insert it through one side of the thwart tube clamp.



Center the thwart tube on the thwart clamp.

Secure the thwart tube by tightening the screws using the 4 mm hex wrench included in the parts bag. This is enough pressure to keep the bar from spinning when rotated with a firm grip. Do not over-tighten these two screws. Over-tightening will result in damage not covered under the warranty.



Correct



Incorrect



STEP 2. INSTALL THE LEFT AND RIGHT CRANK ARMS



The Crank arms on the Pedal, like a bike, are Left and Right specific. The correct orientation of the propel is with the prop facing you and the thwart away from you, as you would pedal it in your kayak.

The crank arms and caps have color-coded "L" and "R" stickers. There is also an "L" and "R" marking laser-etched into the crank arms for future reference.



Left-side colour-coded Orange



Right-side colour-coded Green

Screw the crank arm bolts, starting them by hand and then using the 8mm hex wrench included in the parts bag.



STEP 3. INSTALL THE PEDAL DRIVE UNIT IN YOUR KAYAK



Set the aluminum thwart tube into the half-round recesses located in front of the drive box. Push the slider latch forward to lock the tube in place. To remove the pedal, push the slider latch backward to unlock the tube and repeat on the opposite side.



STEP 4. LOCK THE PEDAL



Lower the pedal through the drive box. Lock the pedal in position with the slider latch installed on the front of your drive box. Replace the drive box cover.



PROPELLER PEDAL DRIVE

For Pedal Pro Fish 3.6m

There are **five key pieces** of assembly to be done:

- Fishing rod holder
- Stadium Seat
- Rudder
- Pedal Drive
- Paddle

First step is to unpack your kayak which should come with an outer sheet plastic, cardboard layer and bubble plastic inner layer. Please ensure to dispose of these materials safely in particular the plastic.

The package includes:

- 1 x kayak
- 1 x rudder
- 1 x handle control
- 1 x paddle
- 1 x pedal drive
- 1 x stadium seat
- 2 x rear seat brackets
- 2 x rear stadium seat screws (front brackets have the screws with handles)
- 1 x fishing rod holder

In the **triangle hatch** put accessories:

- 1 x fishing rod holder support screws
- 1 x handle support screws
- 2 x rear seat brackets

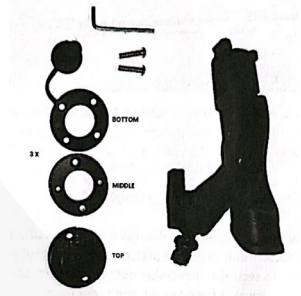
Rudder in the back hatch



1. FISHING ROD HOLDER ASSEMBLY

The rod holder assembly requires:

- the rod holder
- the rod holder bracket (3 pieces),
- 2 x screws and the allen wrench.



1. Combine the three black round pieces together with the bottom, middle and top as indicated above.
2. Decide which rail in the cockpit you want to secure it to and move the slider receivers apart the approximate width of the screw holds and insert the screws.
3. Next insert the fishing rod holder into the now secure base by 'opening' the base as indicated below (Red arrow)
4. Next close the slider to lock the fishing rod holder in place



2. STADIUM SEAT ASSEMBLY

For the stadium seat assembly you'll need the 2 X long screws, black seat brackets and an allen wrench.

In each seat rail you will have two slider receivers in which to you can secure your seat.

Move one to the back of the kayak for each rail and screw in the black bracket in each.



Sit the back bar of the seat on top of the brackets, but don't pop them in yet. Screw the front of the seat into the two front slider receivers.



And then push the back bar down into the back seat brackets to secure that.

The seat position have a tube needs to throw away, Just to keep the distance between H Track in the shipping.



Lastly connect and secure the two side straps which hold the back of the seat upwards.

Secure this in a slightly off of 90 degree upright position, this can be further adjusted once you're on the water.

Also remember to take your allen wrench on your first couple of outings in case you want to further adjust your seat location.



3. RUDDER ASSEMBLY

Take screws fix the kayak handle.

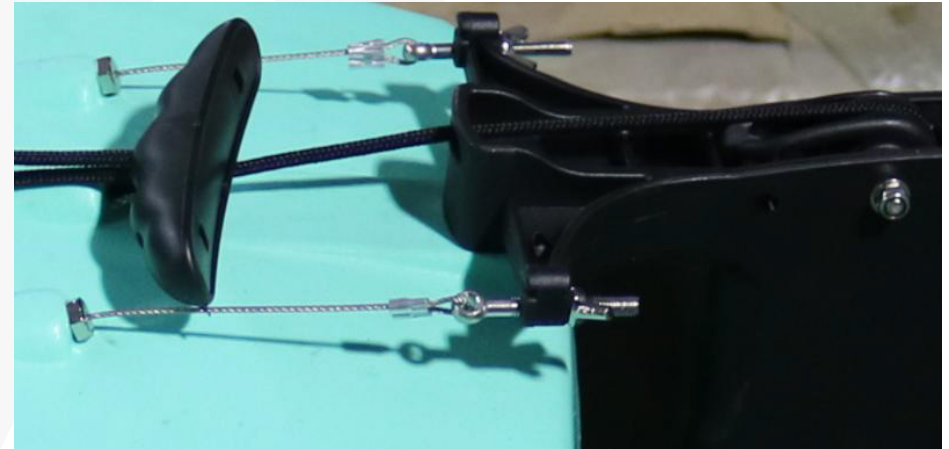


Put the rudder in the hole and use the pin to lock it.



PIN

Insert the Cable through the plastic holes on the left and right sides of the rudder. Control the direction.



4. PEDAL DRIVE ASSEMBLY

In the Pedal Drive carton, take out the accessories to assemble it.



2 x foot strapsit.



- 2 x screws,
- 2 x Tools,
- 2 x caps

Set 4pcs screws on this plate and install the Pedal system on the kayak, then is finished.it.



5. PADDLE ASSEMBLY



The paddle assembly is simple, just depress the button and pop it into the desired hole (3 locations to choose from) to get the preferred orientation of your blades.



Then use the paddle stretch cord to secure it.

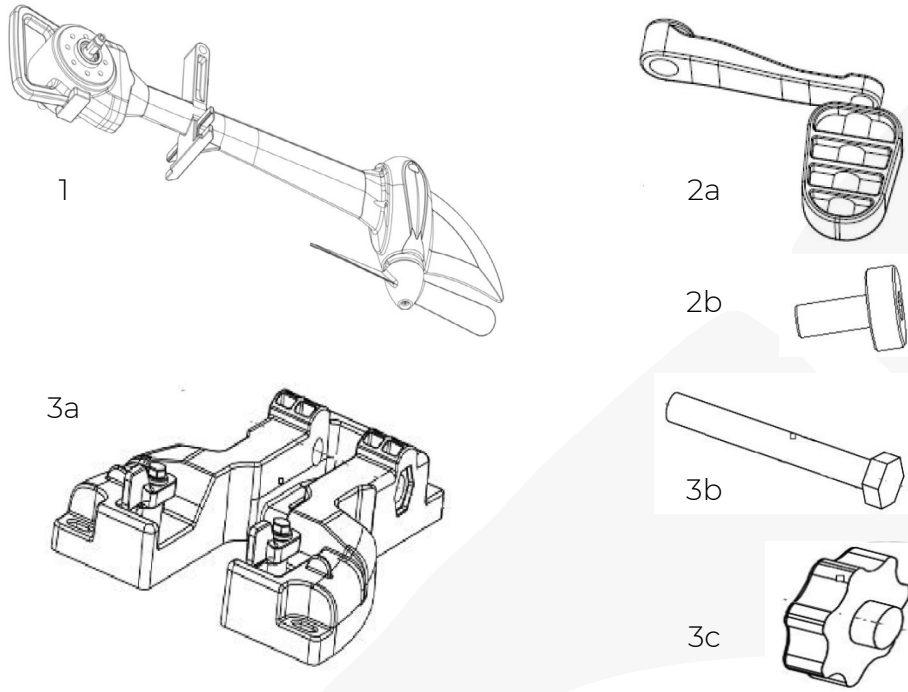
Remember not to leave it attached like that when the kayak is travelling on your car or truck.

WARNING INFORMATION

- Paddle sports can be physically demanding and dangerous.
- Anyone using kayak may be at risk of serious injury or death.
- Get certified training and know your limits before you use this kayak.
- This kayak is intended for recreational use only.
- Never use this kayak in rough or stormy water condition.
- This kayak is not intended to be used as a lifesaving device.
- Always wear a Coast Guard Approved Personal Flotation Vest.
- Do not allow minors to use this kayak without adult Supervision.
- Do not use in areas where dangerous or strong current flows can overcome your ability to control your kayak's direction or destination.
- Never use Drugs or Alcohol before or during the operation of this kayak.
- Always paddle with a buddy in case you require emergency help.
- Never use in cold water that may cause hypothermia.

PROPELLER PEDAL DRIVE

For Pedal Pro Fish 3.2m & 4m XL



1. Pedal Body - Qty: 1

2a. Foot Pedal - Qty: 2

2b. With ring & screws - Qty: 2

3a. Connector/locker for pedal & kayak body - Qty: 1

3b. Qty: 1

3c. Qty: 1

TOOL REQUIRED:

Included 4x Allen Wrench



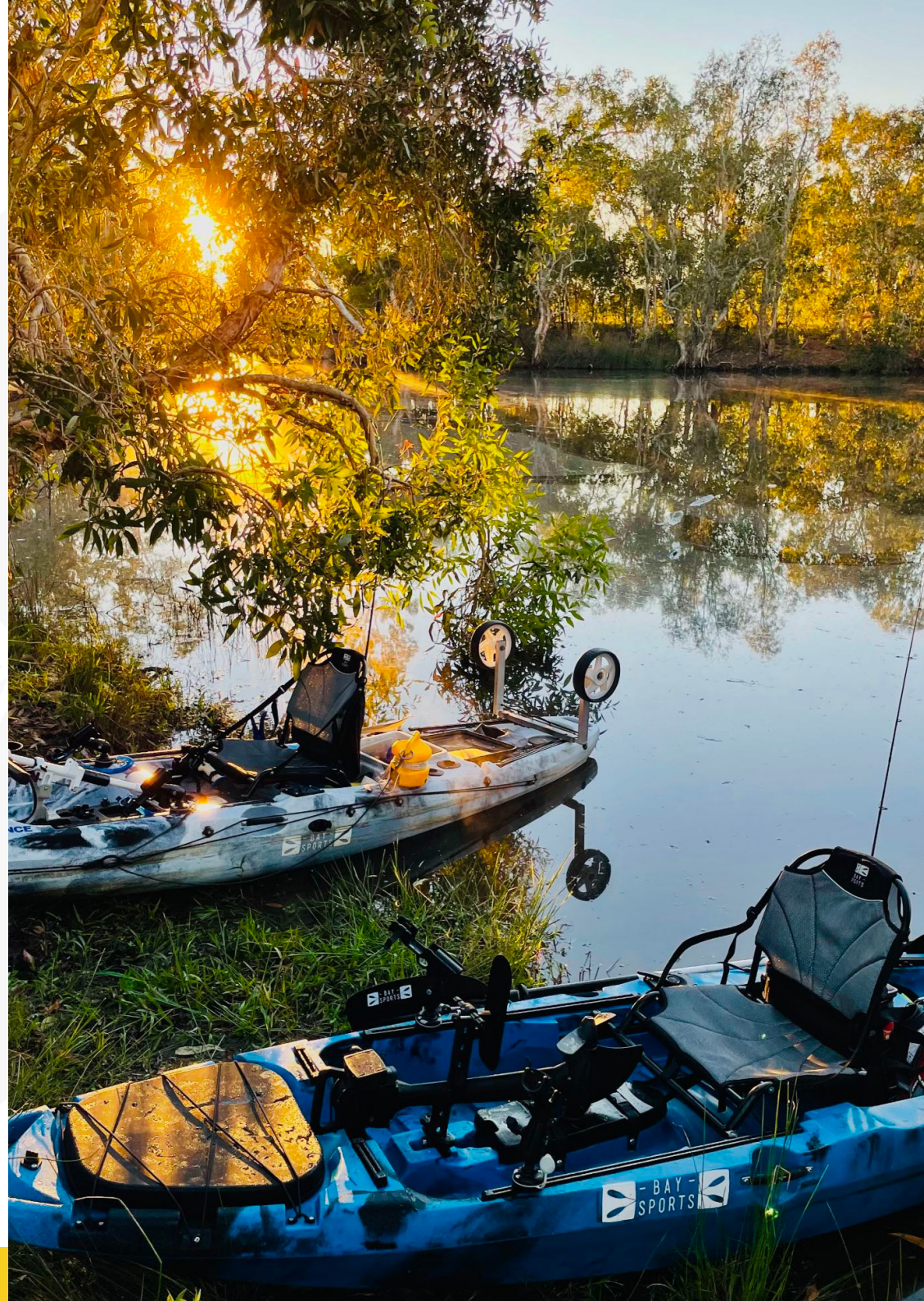
M3 Screwdriver - M8 Screwdriver - M4 Screwdriver and M5 Screwdriver required.

EXTRA PARTS FOR WARRANTY:

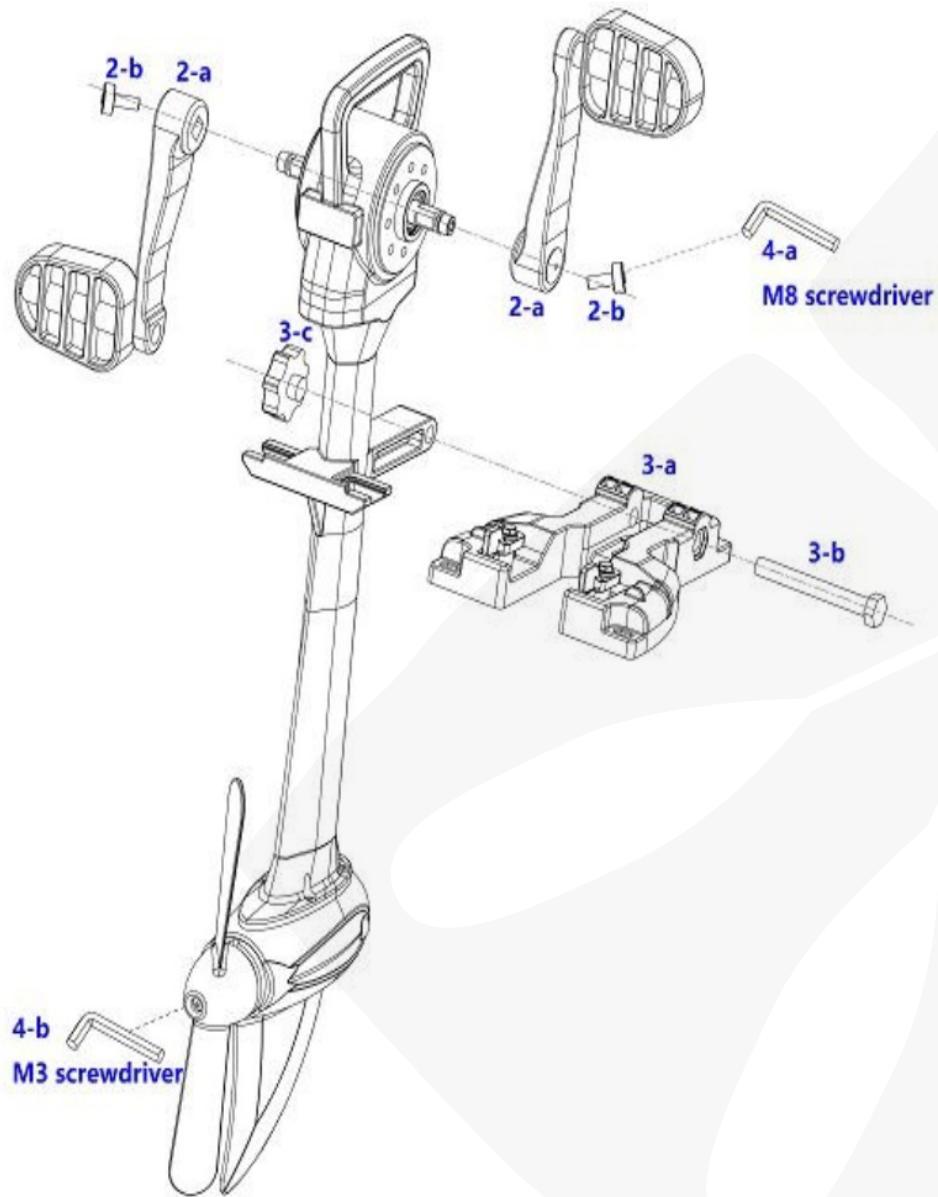
Locker: x2

Seal Ring: x6

Grease Seal: x2



ASSEMBLY



STEP 1

Connect 2x foot pedal kit by 4-a M8 screwdriver. (Please note right and left side).

STEP 2

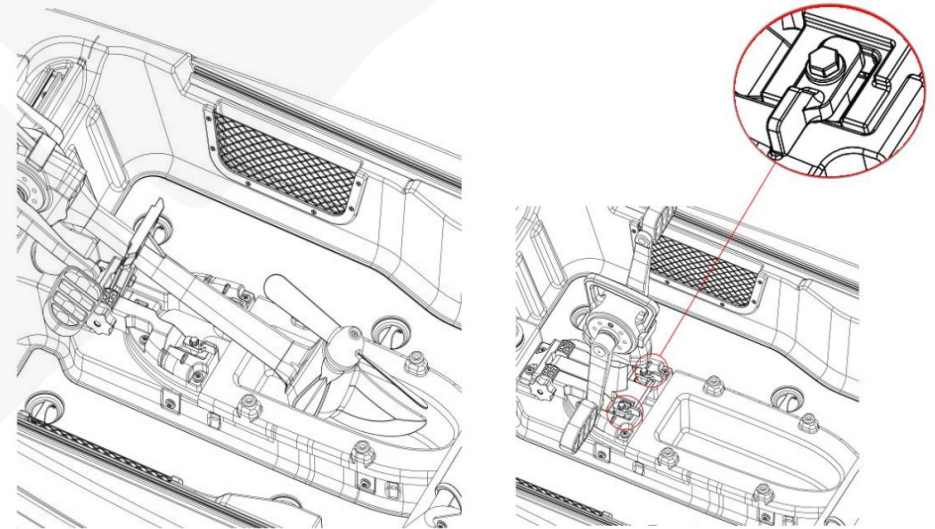
Screw the base (3-a) on the kayak. (If already screwed, ignore this step).

STEP 3

Connect pedal body and the base (3-a) through 3-b and 3-c by hand.

STEP 4

To pivot the pedal drive system into/out of the water, rotate both locker arms anti-clockwise first, then push the pedal drive system away from you to pivot it up and out of the water.



MAINTENANCE AND SERVICE

Much like the drivetrain of a bike, the pedal will require routine inspection and maintenance. We recommend maintenance every 6 months, or 75 days of use. The main purpose of these services is to ensure the internal gears of the unit remain properly lubricated and the covers remain tight and sealed. Failure to maintain these two key points may result in abnormal wearing.

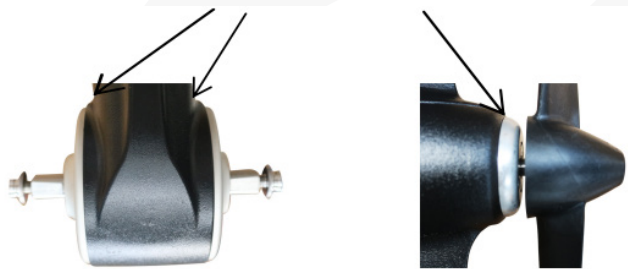
CLEANING THE PROPELLER

Spray off the pedal with a water hose after each use, especially after using in saltwater. Do not use a high-pressure car wash-type sprayer.

CHECK COVERS

The covers are threaded into the pedal frame and use a thread locker to ensure they do not come loose due to vibration and the rotational motion of the spindle. However, to ensure the proper function of the internal gears, it is important that the covers are completely threaded and flush with the frame. Visually inspect the top and bottom covers and, if necessary, use a spanner wrench to tighten them. These covers should be inspected before every use. If the covers are loose or have been removed, they should be reassembled using a blue thread locker on the cap threads.

Covers should be flushed with frame



Note: Operating the pedal with loose covers may result in damage to the gears which will not be covered under warranty.

SHEAR PIN REPLACEMENT

In order to ensure that the gears of your pedal are not damaged if the prop is hit during rotation, your propeller is fixed to the drive shaft with a shear pin. An extra shear pin is included with your new boat to ensure you are never without your pedal. In the event that you need a new shear pin, please contact us to order a replacement component.



Remove the end bolt using a 4mm hex wrench. Pull the propeller straight back to remove the propeller and expose the shear pin.



Replace the shear pin.



Replace the propeller. Make sure the shear pin sets into the recesses in the propeller. Replace the bolt and tighten 1/2 turn past the bolt engagement with the propeller.

Note: The propeller bolt only holds the propeller to the shear pin, it does not drive the propeller, so it does not need to be very tight.

PRODUCT WARRANTY AND LIABILITY

GENERAL PRODUCT WARRANTY

Products purchased from the Authorised Dealer (original place of purchase) or Merchant ("Dealer") will be free of defects in material and workmanship at the time of receipt, and will meet the specifications stated at the place of purchase transaction or online at the Dealer's website, under normal use and service when correctly installed, operated and maintained.

This product warranty is effective for the period of time stated below, unless otherwise stated in the product instructions or depicted in the product advertisement. All Authorised Dealer warranties are NON-TRANSFERABLE and cover only the original end purchaser. This limited warranty does not cover products purchased through non-authorized dealers. Non-authorized dealer receipts are not accepted for warranty verification.

Warranty claims must be made directly to the original place of purchase.

WARRANTY PERIOD

This warranty remains in force for two years from the date of the product's accepted delivery. The Authorised Dealer offers a two years manufacturer's warranty for most products unless otherwise specified on the product advertisement.

WARRANTY SERVICE

The Authorised Dealer will replace any defective or malfunctioning part at no charge, including payment of the shipping costs of parts or replacement product to and from the manufacturer. The purchaser is responsible for labor charges. If the product does not meet specifications as depicted in the advertisement, the Authorized Dealer will refund the full purchase price of the product. Questions regarding the warranty on a specific product and warranty claims should be directed to the Authorised Dealer with whom the purchase transaction was made.

WARRANTY LIMITATIONS

The above warranty does not apply to products that are repaired, modified or altered by any party other than the Authorised Dealer; are subjected to unusual physical stress or conditions (such as overloaded ramps or corrosion), natural disaster, governmental actions, wars, strikes, labor disputes, riots, theft, vandalism, terrorism or any reason beyond reasonable control; are damaged due to improper installation, misuse, abuse, accident or negligence in use, storage, transportation or handling, or tampering; or to products that are considered consumable items or items requiring repair or replacement due to normal wear and tear. Product should be inspected prior to signing for delivery. Product damage incurred during shipping, unless noted on the Bill of Lading at the time of delivery, renders this warranty void.

LIMITED LIABILITY

In no event shall THE AUTHORISED DEALER be liable to the purchaser or any third party for any indirect, incidental, consequential, special, exemplary or punitive damages arising out of the use of the product, including, without limitation, property damage, loss of value of the product or any third party products that are used in or with the product, or loss of use of the product or any third party products that are used in or with the product.

THANK YOU

OUR SUPPORT



support.baysports.com.au

VISIT US



baysports.com.au



View our Locations

baysports.com.au/pages/contact-us

SHARE YOUR EXPERIENCE



[@BaySportsCo](https://www.facebook.com/BaySportsCo)



[@BaySports_Co](https://www.instagram.com/BaySports_Co)

