



This quick start guide provides you with basic instructions only. For more complete instructions, refer to your user's manual provided in the package, or see the online user's manual at www.telephones.att.com/manuals.

Telephone base installation

Option 1: Installation with 2-line jack

Plug the large end of the telephone base power adapter into a power outlet not controlled by a wall switch.

Plug one end of the **black** telephone line cord into the 2-line telephone wall jack or a DSL filter.

A DSL filter (not included) is required if you have DSL high-speed Internet service. The DSL filter must be plugged into the telephone wall jack.



Plug the other end of the **black** telephone line cord into the **LINE 1/L1+L2** telephone jack at the back of the telephone base.

Route the power adapter cord through this slot.

Plug the small end of the telephone base power adapter into the power adapter jack on the back of the telephone base.

Option 2: Installation with separate line jacks

Plug one end of the **clear** telephone line cord into the line 1 telephone wall jack or a DSL filter.

Plug one end of the **black** telephone line cord into the line 2 telephone wall jack or a DSL filter.

DSL filters (not included) are required if you have DSL high-speed Internet service. The DSL filter must be plugged into the telephone wall jack.

Plug the large end of the telephone base power adapter into a power outlet not controlled by a wall switch.

Plug the other end of the **black** telephone line cord into the **LINE 2** telephone jack at the back of the telephone base.

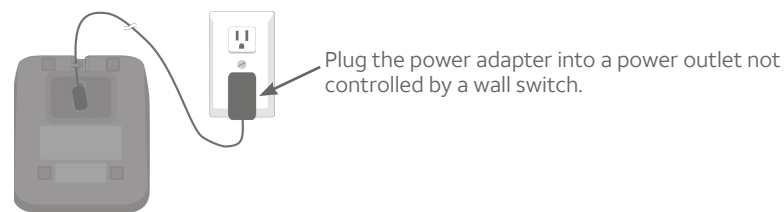
Raise the antenna.

Route the power adapter cord through this slot.

Plug the small end of the telephone base power adapter into the power adapter jack on the back of the telephone base.

Plug the other end of the **clear** telephone line cord into the **LINE 1/L1+L2** telephone jack at the back of the telephone base.

Charger installation



Plug the power adapter into a power outlet not controlled by a wall switch.

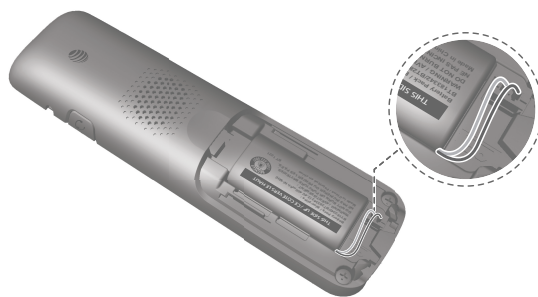
Caution: Use only the power adapter(s) provided with this product. To obtain a replacement, visit our website at www.telephones.att.com or call **1 (800) 222-3111**. In Canada, dial **1 (866) 288-4268**.

Battery installation

Install the battery, as shown below. Charge your handset(s) before initial use. The battery is fully charged after 16 hours of continuous charging.

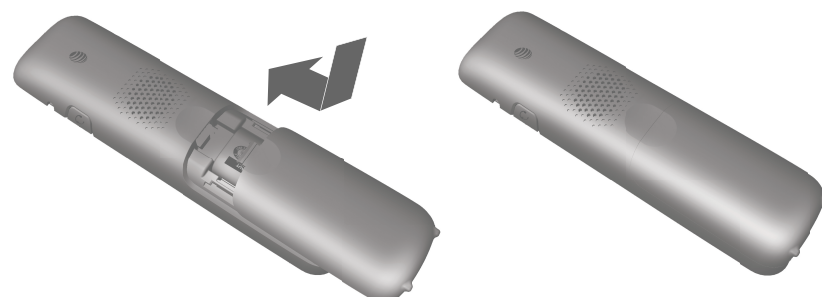
Step 1

Plug the battery connector securely into the socket inside the handset battery compartment. Insert the supplied battery with the label **THIS SIDE UP** facing up, as indicated.



Step 2

Align the cover flat against the battery compartment, then slide it upwards until it clicks into place.



CHARGE light

Step 3

Charge the handset by placing it face forward in the telephone base or charger. The **CHARGE** light under the screen of the handset is on during charging.



Caution: Use only the supplied rechargeable battery or replacement battery (model BT183342/ BT283342).

Quick reference guide - handset

CHARGE light

- On when the handset is charging in the telephone base or charger.

REDIAL/PAUSE

- Press to review the redial list.
- While dialing or entering numbers into the directory, **press and hold** to insert a dialing pause.

▲DIR/VOLUME

- Press to enter the directory when the telephone is not in use.
- Press to scroll up while in menus.
- During a call or message playback, press to increase the listening volume.
- While entering names or numbers, press to move the cursor to the right.

LINE 1/FLASH

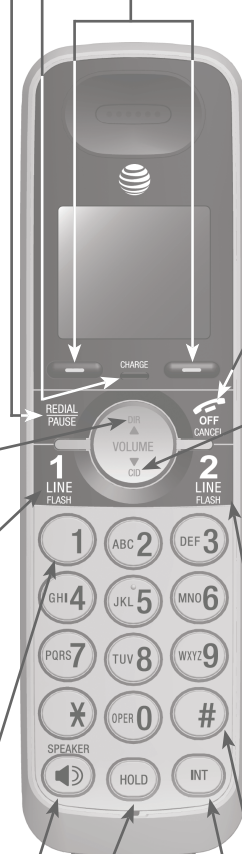
- Press to make or answer a call on line 1.
- During a call, press to answer an incoming call on line 1 when you receive a call waiting alert.

1

- While reviewing a call log entry, press repeatedly to add or remove 1 in front of the telephone number before dialing or saving it in the directory.

🔊/SPEAKER

- Press to make or join a call using the first available line, starting with line 1.
- Press to answer a call using the speakerphone.
- During a call, press to switch between speakerphone and handset use.



Soft keys (2)

- Press to select a menu item displayed above the key.

⏪/OFF/CANCEL

- During a call, press to hang up.
- Press and hold** while the telephone is not in use to erase the missed calls indicator.
- Press to delete a digit or character while entering a number or name.
- While in a menu, press to cancel an operation, back up to the previous menu, or exit the menu display; or **press and hold** to return to the idle mode.

▼CID/VOLUME

- Press to review the call log when the telephone is not in use.
- Press to scroll down while in menus.
- During a call or message playback, press to decrease the listening volume.
- While entering names or numbers, press to move the cursor to the left.

LINE 2/FLASH

- Press to make or answer a call on line 2.
- During a call, press to answer an incoming call on line 2 when you receive a call waiting alert.

(pound key)

- Press repeatedly to show other dialing options when reviewing a call log entry.

INT

- Press to initiate an intercom conversation or transfer a call.

- HOLD**
Press to put a call on hold.

Quick reference guide - telephone base

1

- While reviewing a call log entry, press repeatedly to add or remove 1 in front of the telephone number before dialing or saving it in the directory.

HOLD

- Press to put a call on hold.

▲/VOLUME/▼

- During a call, press to adjust the speakerphone volume.
- Press to adjust the volume during message playback.
- While the telephone base is ringing, press the increase or decrease the ringer volume.
- When the telephone is not in use, press to adjust the telephone base ringer volume for all lines.

FLASH

- During a call, press to answer an incoming call when you receive a call waiting alert.

(pound key)

- Press repeatedly to show other dialing options when reviewing a call log entry.

📞/ANSWER ON 1

- Press to turn the answering system of line 1 on or off.

📞/ANSWER ON 2

- Press to turn the answering system of line 2 on or off.

▼CID

- Press to review the call log when the telephone is not in use.
- Press to scroll down while in menus.
- While entering names or numbers, press to move the cursor to the left.

CANCEL

- While in a menu setting item, press to exit without making changes or **press and hold** to return to idle mode.
- While the telephone base is ringing, press to silence the ringer temporarily.
- Press and hold** to erase the missed calls indicator while the telephone is not in use.
- While entering names or numbers, press to delete a character or a digit.

X/DELETE

- Press to delete messages.

⏪/REPEAT

- Press to repeat a message or press twice to play the previous message.

➡/SKIP

- Press to skip to the next message.

•/REC

- Press to record a memo or an outgoing announcement.

Large tilt display

- Move the top of the display forward or backward to adjust the angle of the screen for maximum visibility.

📞/LINE 1

- Press to make or answer a call on line 1.

📞/LINE 2

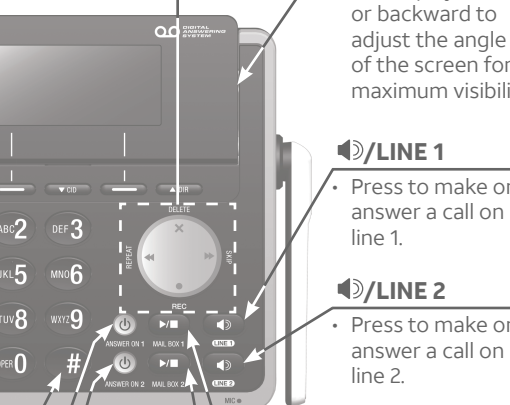
- Press to make or answer a call on line 2.

📧/MAIL BOX 1

- Press to start or stop message playback of the mailbox of line 1.

📧/MAIL BOX 2

- Press to start or stop message playback of the mailbox of line 2.

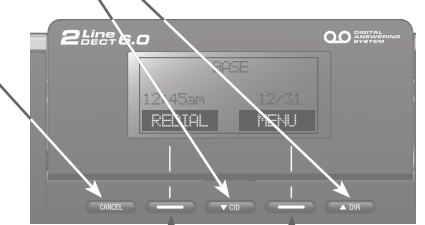


▲DIR

- Press to enter the directory when the telephone is not in use.
- Press to scroll up while in menus.
- While entering names or numbers, press to move the cursor to the right.

Soft keys (2)

- Press to select a menu item displayed above the key.



Initial settings

We recommend you program your telephone system before use. The following are a few examples of common features to set before using the telephone. Refer to the **Handset settings, Telephone base settings** and **Answering system settings** in the user’s manual provided in the package for detailed instructions on setting all telephone features.

Set date/time
Set the date/time before using the answering system. Using a cordless handset or the telephone base: 1. MENU -> ▼ or ▲ -> SETTINGS -> SELECT . 2. ▼ or ▲ -> Set date/time -> SELECT . 3. Enter the month -> SET -> Enter the day -> SET -> Enter the year -> SET . 4. Enter the hour -> SET -> Enter the minute -> SET . 5. ▼ or ▲ to choose AM or PM -> SET .
Record your own announcement
Your outgoing announcement plays when calls are answered by the answering system. You can use the preset announcement to answer calls, or replace it with your own recorded announcement. Using a cordless handset: 1. MENU -> ▼ or ▲ -> ANSWERING SYS -> SELECT . 2. ▼ or ▲ -> Mailbox 1 or Mailbox 2 -> SELECT . 3. ▼ or ▲ -> Ans sys setup -> SELECT . 4. ▼ or ▲ -> Announcement -> SELECT -> Press 7 to record. 5. Facing the handset, record your announcement and press 5 to end recording. Using the telephone base: 1. */REC -> ▼ or ▲ -> Announcement -> SELECT . 2. ▼ or ▲ -> Mailbox 1 or Mailbox 2 -> SELECT . 3. Facing the telephone base, record your announcement and press 5 to end recording.
Number of rings
You can set the answering system to answer an incoming call after 2, 4 or 6 rings, or toll saver. If you choose toll saver, the answering system answers a call after two rings when you have new messages, or after four rings when there are no new messages. This enables you to check for new messages and avoid paying unnecessary long distance charges if you are calling from out of your local area. If you want the built-in answering system instead of the voicemail to answer a call, you should set the answering system to answer a call at least two rings before the voicemail is set to answer. Contact your telephone service provider for information on your voicemail settings. Using a cordless handset or the telephone base: 1. MENU -> ▼ or ▲ -> Answering sys -> SELECT . 2. ▼ or ▲ -> Mailbox 1 or Mailbox 2 -> SELECT . 3. ▼ or ▲ -> Ans sys setup -> SELECT . 4. ▼ or ▲ -> # of rings -> SELECT . 5. ▼ or ▲ -> Choose among 2, 4, 6 or Toll saver -> SET .
Ringer volume
You can set the ringer volume level to one of the six levels or turn the ringer off. Using a cordless handset or the telephone base: 1. MENU -> ▼ or ▲ -> Ringers -> SELECT . 2. SELECT to select Ringer volume . 3. ▼ or ▲ -> Line 1, Line 2 or Lines 1&2 -> SELECT . 4. ▼ or ▲ to choose the desired level -> SET .

Telephone operation

Operation	Steps
Making a call	Using a cordless handset: Press LINE 1, LINE 2 or ☎/SPEAKER -> Enter the telephone number. Using the telephone base: Press ☎/LINE 1 or ☎/LINE 2 -> Enter the telephone number.
On-hook dialing (predialing)	Using a cordless handset: Enter the telephone number -> Press LINE 1, LINE 2 or ☎/SPEAKER to call. Using the telephone base: Enter the telephone number -> Press ☎/LINE 1 or ☎/LINE 2 to call.
Answering a call	Using a cordless handset: Press LINE 1, LINE 2 or ☎/SPEAKER . Using the telephone base: Press ☎/LINE 1 or ☎/LINE 2 .
Ending a call	Using a cordless handset: Press ☎/OFF/CANCEL or return the handset to the telephone base or charger. Using the telephone base: Press ☎/LINE 1 or ☎/LINE 2 .
Handset speakerphone	During a call, press ☎/SPEAKER to switch between handsfree speakerphone and normal handset use.
Redial	Using a cordless handset: REDIAL -> ▼ or ▲ -> LINE 1, LINE 2 or ☎/SPEAKER . Using the telephone base: REDIAL -> ▼ or ▲ -> ☎/LINE 1 or ☎/LINE 2 .
Volume control	Press VOLUME▼ to decrease or press VOLUME▲ to increase the listening volume during a call.
Call waiting <small>(Requires subscription from telephone service provider)</small>	Press FLASH on the handset or on the telephone base to put current call on hold and to take the new call; press again to switch back and forth between calls.

Caller ID

This product supports caller ID services offered by most telephone service providers. The telephone stores caller ID information of the last 50 incoming calls in the telephone base. This information is common to all devices.

Missed call indicator
When a handset or the telephone base is in idle mode and has new or missed calls, its screen shows L1)X Missed or L2)X Missed . You can erase the missed call indicator either by reviewing the call log one by one, or by <u>pressing and holding</u> ☎/OFF/CANCEL on the handset or CANCEL on the telephone base in idle mode.
Review and dial a number in the call log
1. CID in idle mode -> ▼ or ▲ to scroll through the list. 2. LINE 1, LINE 2 or ☎/SPEAKER on the handset, or ☎/LINE 1 or ☎/LINE 2 on the telephone base to call when the desired entry is displayed.

Directory

The directory can store up to 50 entries, which are shared by all system devices.

Operation	Steps
Adding an entry	1. MENU . 2. ▼ or ▲ -> Directory -> SELECT . 3. ▼ or ▲ -> Add contact -> SELECT . 4. Enter a telephone number up to 30 digits -> NEXT . 5. Enter a name up to 15 characters -> SAVE .
Searching/ dialing an entry	1. DIR in idle mode. 2. Press ▼ or ▲ to browse through the directory, or press the dialing keys (0-9) to start a name search. 3. Press LINE 1, LINE 2 or ☎/SPEAKER on a handset to call. -OR- Press ☎/LINE 1 or ☎/LINE 2 on the telephone base to call.

Answering system

About answering system and voicemail
Your telephone has separate indicators for two different types of voice messages: those left on the built-in answering system and those left at your telephone service provider’s voicemail. To listen to messages recorded on the built-in answering system, refer to the Message playback section on the following page; to listen to voicemail, contact your telephone service provider for more information.
Turn answering system on/off
The answering system must be turned on to answer and record messages. Using a cordless handset: 1. MENU -> ▼ or ▲ -> ANSWERING SYS -> SELECT . 2. ▼ or ▲ -> Mailbox 1 or Mailbox 2 -> SELECT . 3. ▼ or ▲ -> Ans sys setup -> SELECT . 4. ▼ or ▲ -> Answer ON/OFF -> SELECT . 5. ▼ or ▲ -> On or Off -> SET . When the answering system is on, the handset shows ^{ANS1} ON1 , ^{ANS} ON2 or ^{ANS1} ON2 . Using the telephone base: <ul style="list-style-type: none">Press ☎/ANSWER ON 1 and/or ☎/ANSWER ON 2 to turn the answering system on or off. If the answering system is turned on, it announces, “<i>Calls will be answered.</i>” If the answering system is turned off, it announces, “<i>Calls will not be answered.</i>”
Message alert tone
When this feature is on, and there is at least one new message, the telephone base beeps every 10 seconds. Using a cordless handset or the telephone base: 1. MENU -> ▼ or ▲ -> Answering sys -> SELECT . 2. ▼ or ▲ -> Mailbox 1 or Mailbox 2 -> SELECT . 3. ▼ or ▲ -> Ans sys setup -> SELECT . 4. ▼ or ▲ -> Msg alert tone -> SELECT . 5. ▼ or ▲ -> On or Off -> SET .

Answering system (continued)

Call screening																				
Use this feature to choose whether incoming messages can be heard over at the telephone base when they are being recorded. If you turn call screening on, you hear the incoming message at the telephone base. While monitoring an incoming message, you can answer the call by pressing LINE 1 or LINE 2 on the handset or ☎/LINE 1 or ☎/LINE 2 on the telephone base. Using a cordless handset or the telephone base: 1. MENU -> ▼ or ▲ -> Answering sys -> SELECT . 2. ▼ or ▲ -> Mailbox 1 or Mailbox 2 -> SELECT . 3. ▼ or ▲ -> Ans sys setup -> SELECT . 4. ▼ or ▲ -> Call screening -> SELECT . 5. ▼ or ▲ -> choose On or Off -> SET .																				
Message playback																				
Using the telephone base: Press ▶/MAIL BOX 1 or ▶/MAIL BOX 2 when the telephone base is in idle mode. Using a handset: 1. MENU -> ▼ or ▲ -> ANSWERING SYS -> SELECT . 2. ▼ or ▲ -> Mailbox 1 or Mailbox 2 -> SELECT . 3. SELECT to select Play messages . Options during playback																				
Feature	On the telephone base	On a handset	Adjust playback volume	Press ▼/VOLUME/▲	Press ▼VOLUME or ▲VOLUME	Stop playback	Press ▶/MAIL BOX 1 or ▶/MAIL BOX 2	Press 5	Skip to the next message	Press ▶/SKIP	Press 6	Repeat the message	Press ◀/REPEAT	Press 4	Play the previous message	Press ◀/REPEAT twice	Press 4 twice	Delete the message	Press X/DELETE	Press 3
Feature	On the telephone base	On a handset																		
Adjust playback volume	Press ▼/VOLUME/▲	Press ▼VOLUME or ▲VOLUME																		
Stop playback	Press ▶/MAIL BOX 1 or ▶/MAIL BOX 2	Press 5																		
Skip to the next message	Press ▶/SKIP	Press 6																		
Repeat the message	Press ◀/REPEAT	Press 4																		
Play the previous message	Press ◀/REPEAT twice	Press 4 twice																		
Delete the message	Press X/DELETE	Press 3																		

For more detailed instructions, please refer to the **TL88102/TL88202 DECT 6.0 2-line cordless telephone/answering system with caller ID/call waiting** user’s manual provided in your package, or see the online user’s manual at **www.telephones.att.com/manuals**.

For customer service or product information, visit our website at **www.telephones.att.com** or call **1 (800) 222-3111**. In Canada, dial **1 (866) 288-4268**.