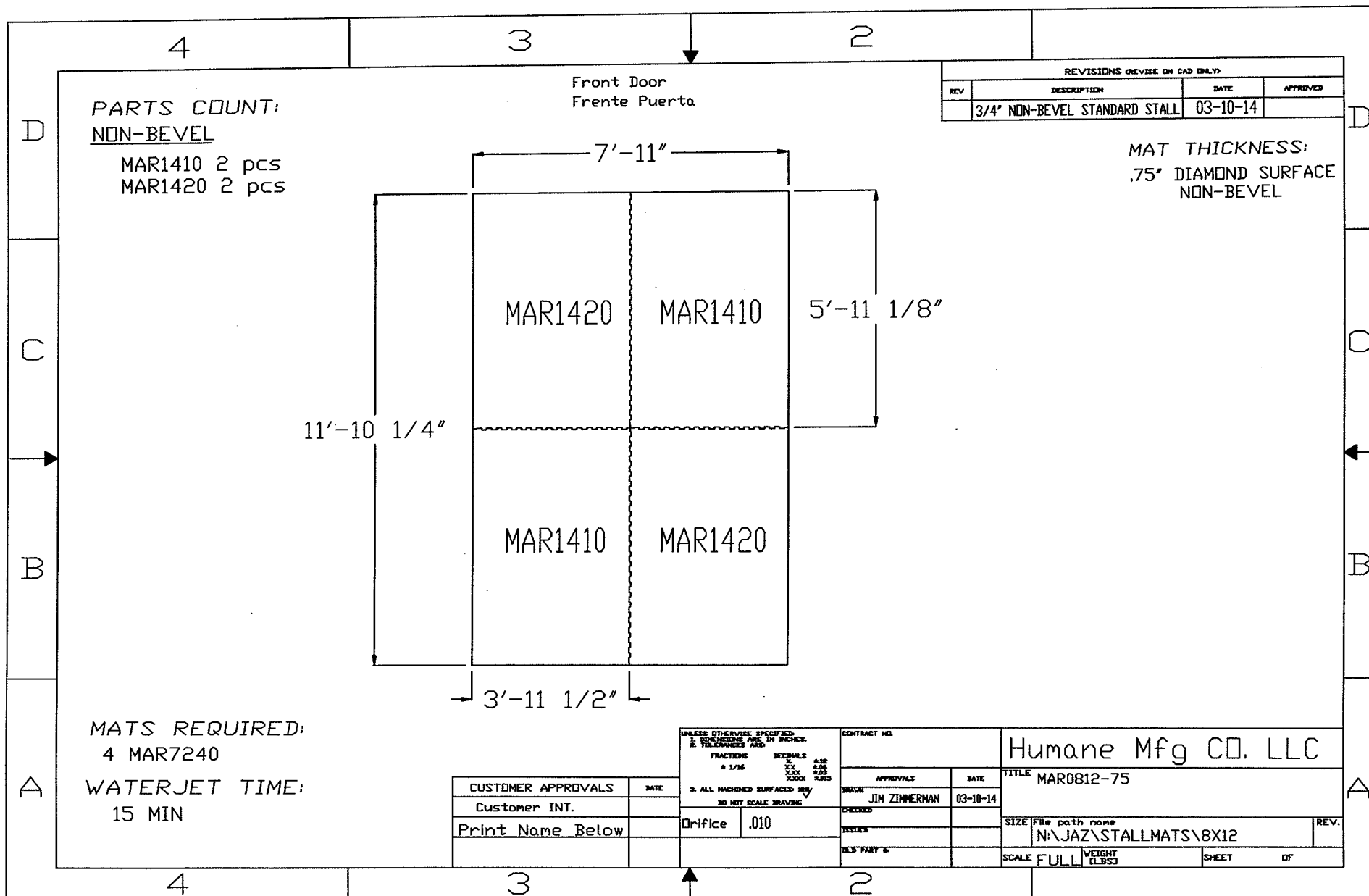


8 X 12



PARTS COUNT:  
NON-BEVEL

MAR1410 2 pcs  
MAR1420 2 pcs

Front Door  
Frente Puerta

REVISIONS (REVISE ON CAD ONLY)			
REV	DESCRIPTION	DATE	APPROVED
	3/4" NON-BEVEL STANDARD STALL	03-10-14	

MAT THICKNESS:  
.75" DIAMOND SURFACE  
NON-BEVEL

11'-10 1/4"

3'-11 1/2"

5'-11 1/8"

MAR1420

MAR1410

MAR1410

MAR1420

MATS REQUIRED:  
4 MAR7240

WATERJET TIME:  
15 MIN

UNLESS OTHERWISE SPECIFIED:  
1. DIMENSIONS ARE IN INCHES.  
2. TOLERANCES ARE:  
FRACTIONS DECIMALS ASB  
± 1/16 ± .005 ± .005  
± .001 ± .001 ± .001  
3. ALL MACHINED SURFACES UNLESS NOTED OTHERWISE SHALL BE FINISHED TO A 320 RIT SCALE FINISH.

CONTRACT NO.	
APPROVALS	DATE
DRAWN JIM ZIMMERMAN	03-10-14
CHECKED	
ISSUED	
OLD PART #	

Humane Mfg CO, LLC

TITLE MAR0812-75

CUSTOMER APPROVALS	DATE
Customer INT.	
Print Name Below	

Drifrice .010

SIZE	File path name	REV.
	N:\JAZ\STALLMATS\8X12	
SCALE	FULL	WEIGHT (LBS)
		SHEET OF