

SHEET METAL BENDING & FORMING MACHINE



GENERAL FEATURES



1. EU Streamlined Design:

Entire design follows EU standards, featuring a heat-treated frame and a highly rigid workbench.

2. Mechanical Compensation:

Optional device for precise bending.

3. Hydraulic Synchronization Control:

Ensures precise repeatability, complemented by Estun NC programmable logic controller for user-friendly operation.

4. Integrated Hydraulic System:

Utilizes Bosch Rexroth system, enabling quick and automatic switching to a slow bend.

5. NC E21 System Programming:

X-axis and Y-axis programmed for accurate inverter positioning.

6. Variable Frequency Hydraulic Control:

Advanced technology for stable and reliable operation.

7. Optimal Parameter Ratio:

Ensures stable performance and convenient operation.

8. Press Brake Features:

Equipped with a standard single-axis backgauge system (X-axis) and single-axis bending angle system (Y-axis).

9. Additional Functionality:

Option to add V-axis compensation function, and choose appropriate molds for easy bending of complex-shaped workpieces.

TECHNICAL SPECIFICATION

	MODEL	UNIT	SL-33-TON-5PB
	Bending Force	KN	300
	Bending Length	mm	1600
	Upright Distance	mm	1300
	Throat Depth	mm	200
	Stroke	mm	80
	Open Height	mm	320
	Fast Speed	mm	120
	Working Speed	mm	17
	Return speed	mm	160
	Hydraulic Oil Standard	/	#46 Antiwear hydrau
	Oil Tank	L	65
	Main Motor	Kw	5.5
	Weight	Ton	2.3
	Dimensions	L×W×H mm	1650*1200*1700
	Power supply	/	380V/50HZ/3PH
Bending Thickness	Mild Steel	mm	2.3mm
	Stainless Steel	mm	1.2mm

STANDARD COMPONENTS

Controller

Estun E21 NC System

Backgauge Axis

2 (Y, X)

Hydraulic Valve

BOSCH-REXROTH

Hydraulic Gear Pump

Sunny Company

Tubing Connector

JS / EMB

Clamps

SellEton

Front Protection

Left & Right Guard

Rear Protection

Fully Enclosed Rear Guard

Main Motor

Siemens / WN

Electrical Components

Schneider

Ball Screw

PMI / PYM

Foot Switch

SellEton

● **Front side view**

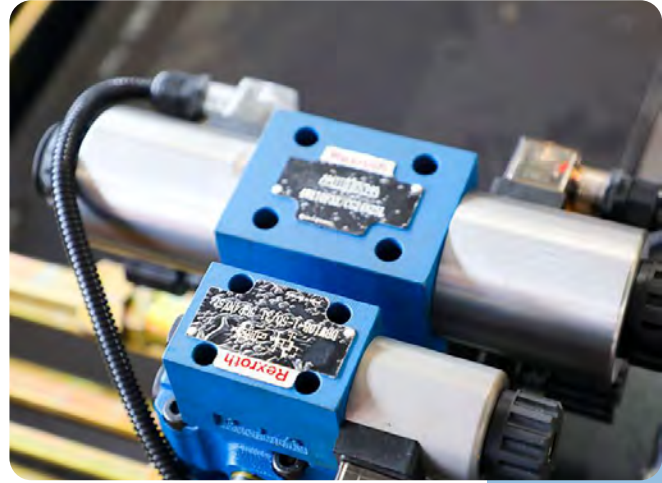


● **E21 Control system**

● **Back side view**

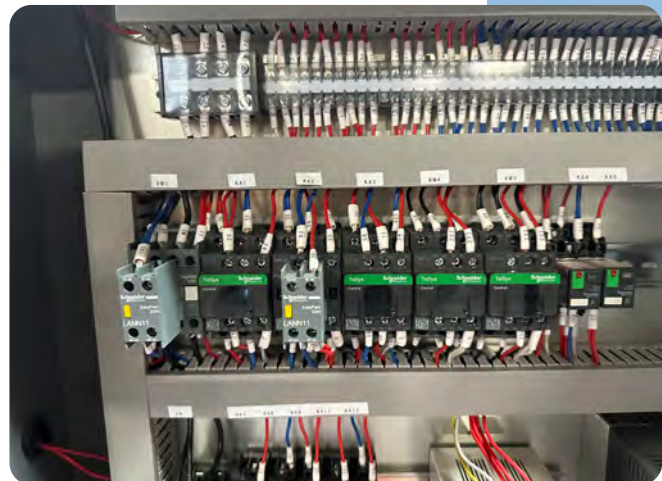


- **Rexroth hydraulic system**

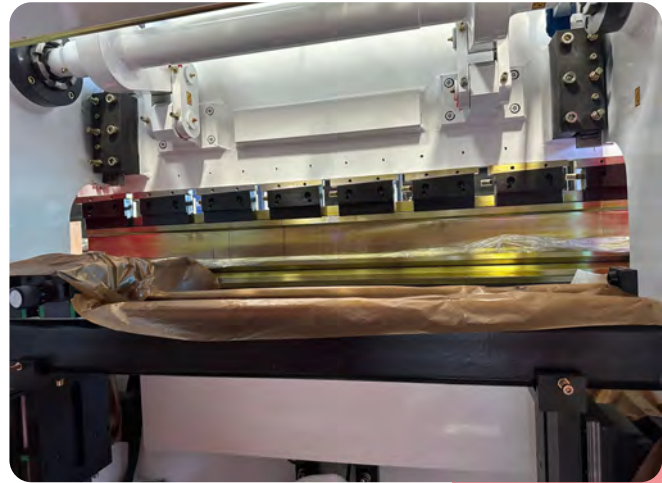


- **Siemens / WN**

- **Schneider electrical**

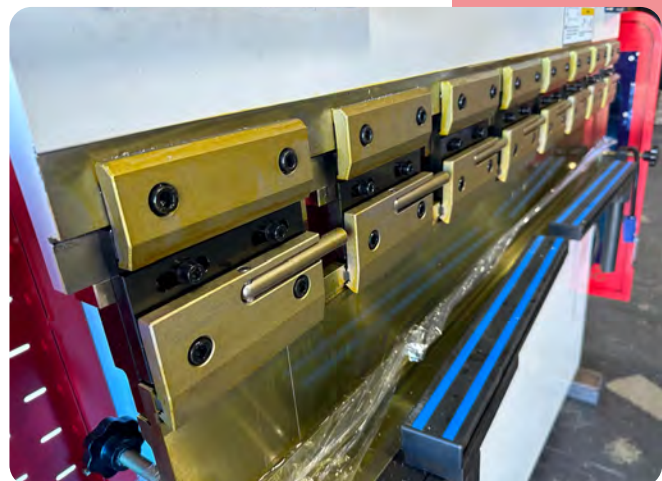


- **SellEton Linear guide**
- **Backgauge with manual R axis**



- **Schneider stroke side**

- **SellEton Fast clamps**

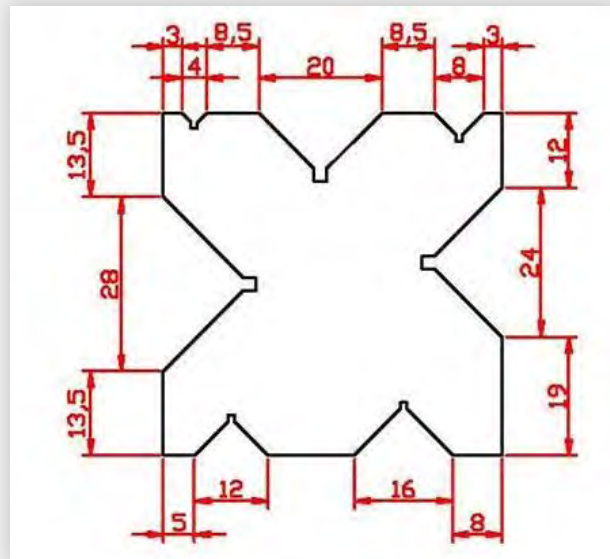
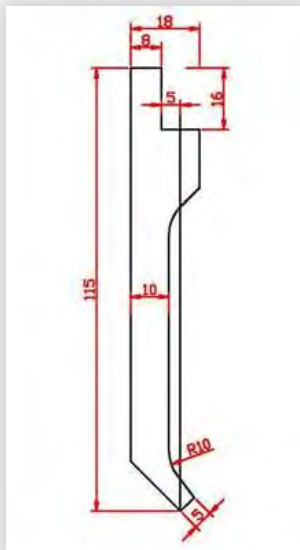


CONTROLLER



- 1. HD LCD Display:** For faster and more convenient programming.
- 2. Intelligent Positioning:** X, Y-axis intelligent positioning, with the option for manual adjustment, eliminating the need for a mechanical hand positioning device.
- 3. Built-in Dwell Time:** Unloading delay design function, simplifying operations without the need for time relays and reducing costs.
- 4. Parameter Backup and Restore:** Key functionality for backup and restoration of parameters, reducing maintenance costs.
- 5. Multi-step Programming:** Supports multi-step programming, enabling completion of complex workpieces in one go, improving production efficiency and machining accuracy.
- 6. Robust Panel Design:** All panel keys are micro-switches, undergo rigorous testing for EMC, high temperature, and vibration to ensure product stability and extended service life.
- 7. CE Certification:** Meets CE standards, catering to the needs of overseas markets.

PUNCH & DIE DRAWING



Standard tooling

Multi-V Bottom Die type

Material adopts 42Crmo or C45 high quality steel, hot-treatment HRC 47±2°.

Standard section:

2*800mm