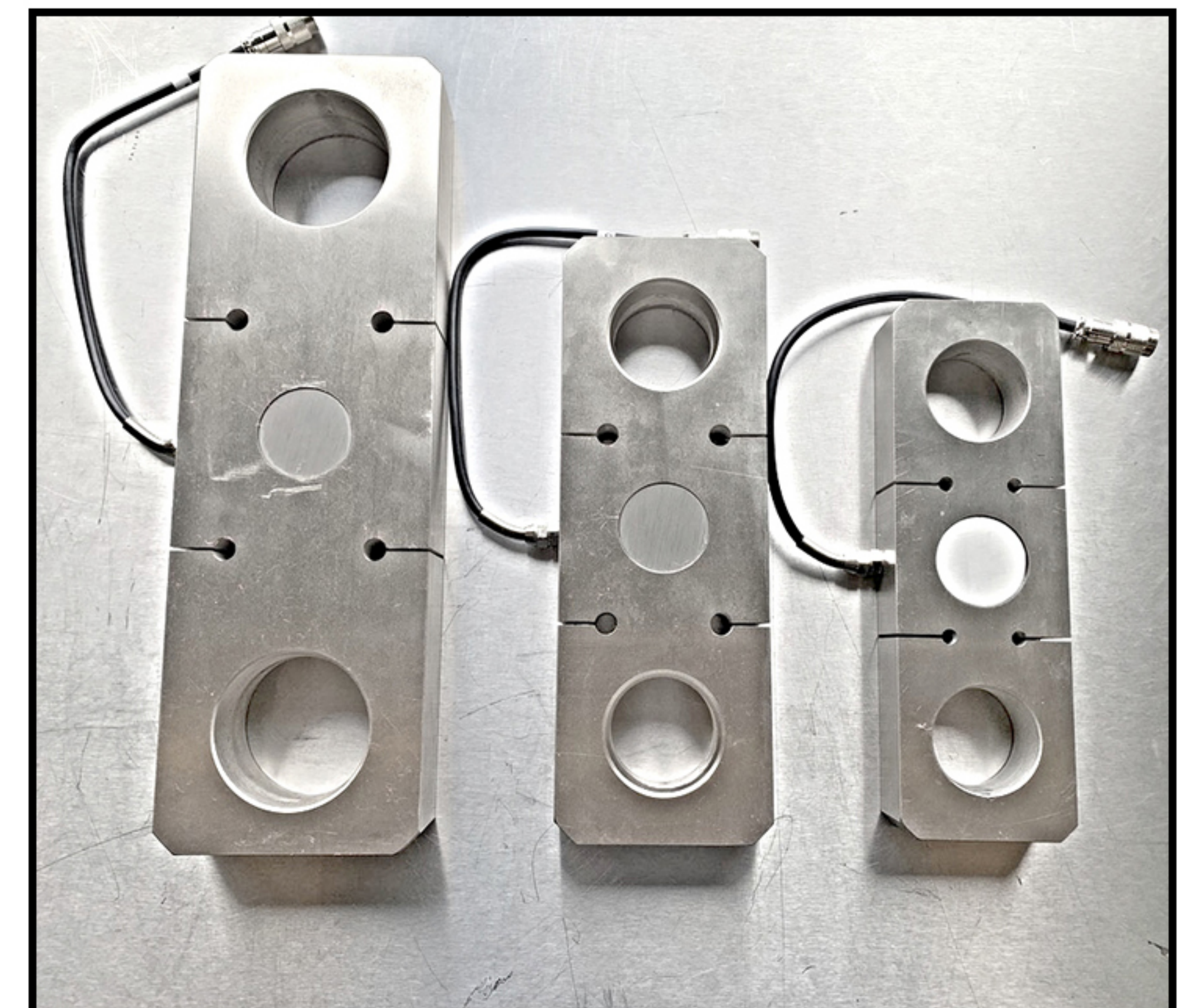
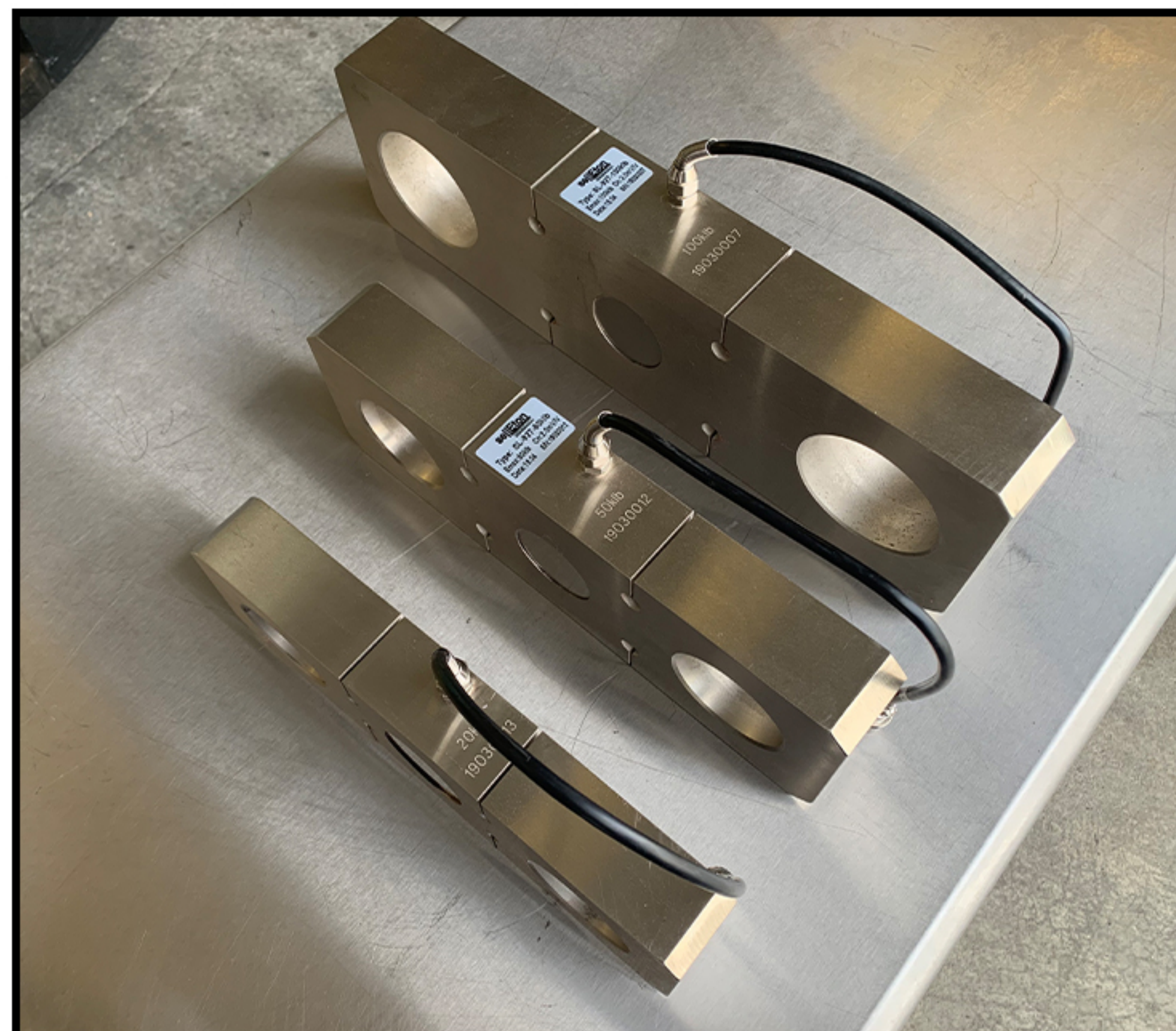
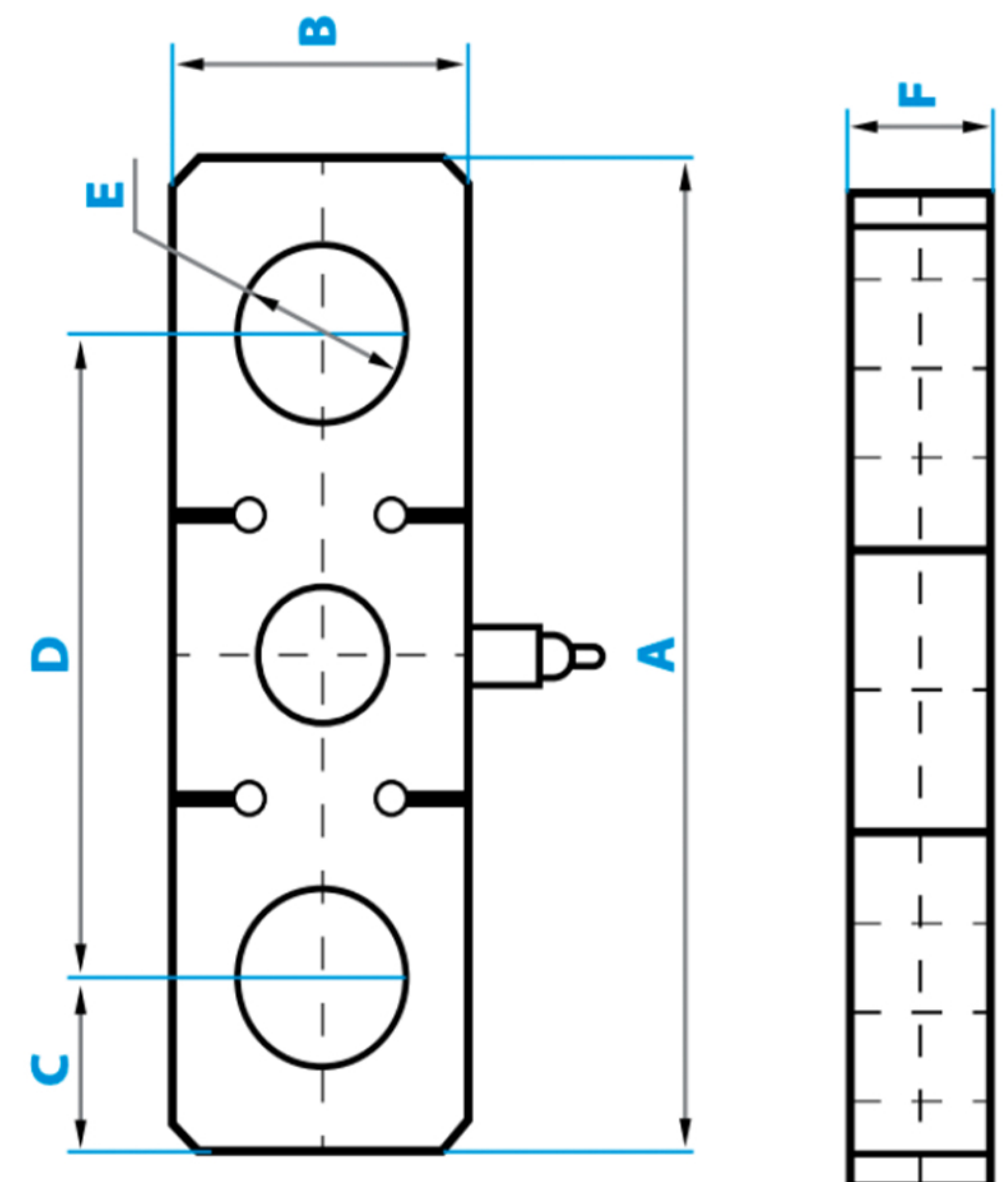


SL-927 Tension Link, Nickel Plated | IP67



RATED CAPACITY	DIMENSIONS					
	A	B	C	D	E	F
lb/inches						
10k lb	11.125	3.55	1.875	7.25	2.015	1.5
25k lb	11.125	3.55	1.875	7.25	2.015	1.5
50k lb	12.2	4.33	2.01	8.27	2.13	1.69
100k lb	16.5	5.0625	2.375	11.875	2.84	1.97
200k lb	23.625	7.09	3.875	15.75	4.6	3.15
250k lb	23.625	7.09	3.875	15.75	4.6	3.15
kg/mm						
4535.92 kg	282.575	90.17	47.625	184.15	51.181	38.1
11339.8 kg	282.575	90.17	47.625	184.15	51.181	38.1
22679.6 kg	309.88	109.982	51.054	210.058	54.102	42.926
45359.2 kg	419.1	128.5875	60.325	301.625	72.136	50.038
90718.4 kg	600.075	180.086	98.425	400.05	116.84	80.01
113398 kg	600.075	180.086	98.425	400.05	116.84	80.01


Rated Capacity:

25/50/100/150/200 /250K lb

Rated Output:

2.0mV/V

Non-linearity:
 $\pm 0.03\%$ F. S.

Hysteresis:
 $\pm 0.02\%$ F. S.

Repeatability:
 $\pm 0.02\%$ F. S.

Creep(30minutes):
 $\pm 0.03\%$ F. S.

Temperature Effect on Span:
 $\pm 0.0015\%$ F.S. /°C

Temperature Effect on Zero:
 $\pm 0.0027\%$ F.S. /°C

Zero Balance:
 $\pm 1.00\%$ F. S.

Insulation Resistance:

> 5000 MEGOHMS

Operation Temperature:

-10°C - +40°C (14°F - 104°F)

Input Impedance:
 $385 \pm 20 \Omega$
Output Impedance:
 $350 \pm 3 \Omega$
Safe Overload:

150% F.S.

Destructive Load:

300% F.S.

Excitation Recommended:

10-20V AC/DC

Material/Finish:

Alloy Steel

Cable Length:

Standard Cable

25K lb: 20ft/6m

50K-100K lb: 40ft/12m

150K-250K lb: 60ft/18m

Load Cell Wiring:

Red+Excitation

Black- Excitation

Green+Signal

White- Signal