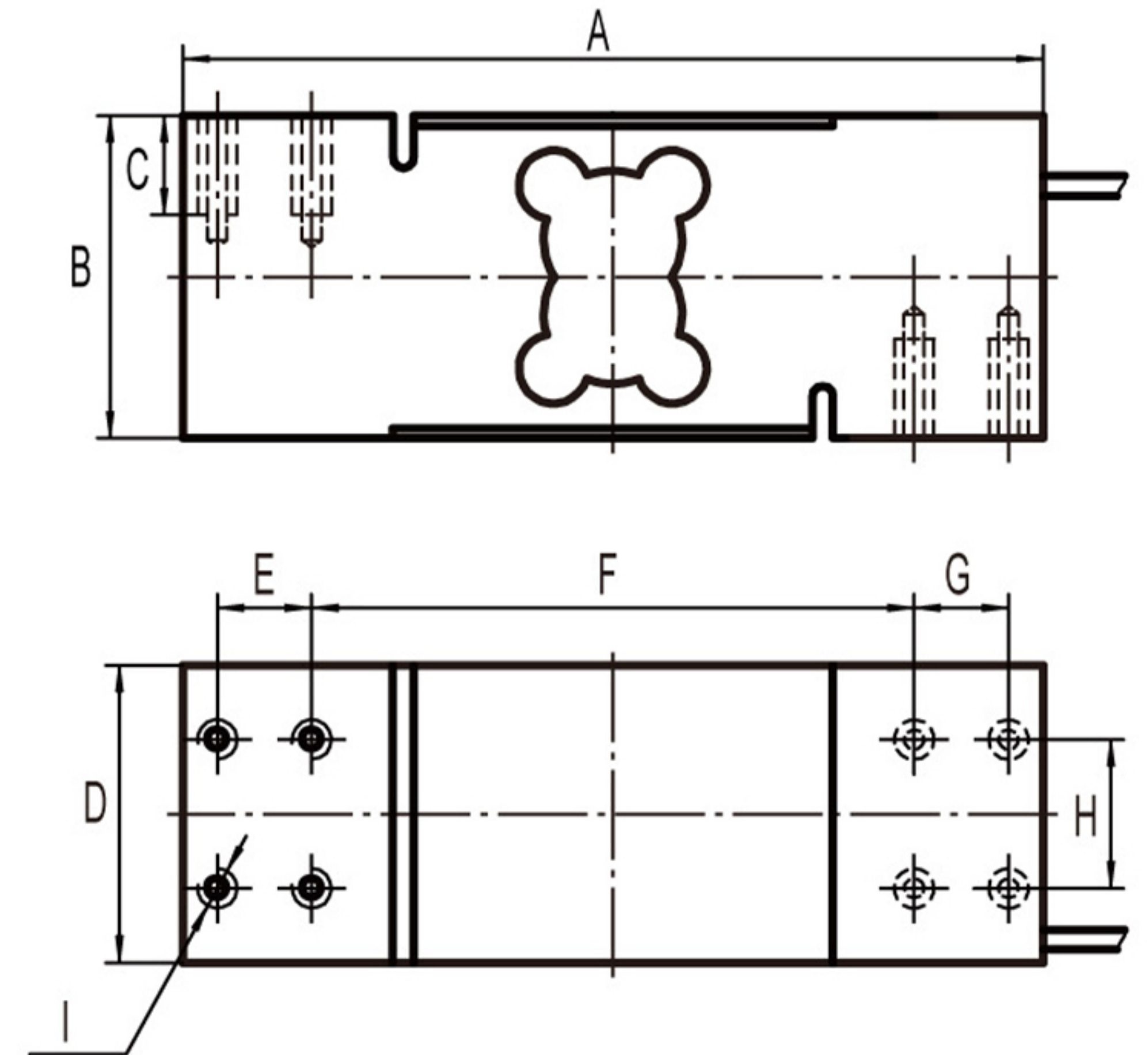
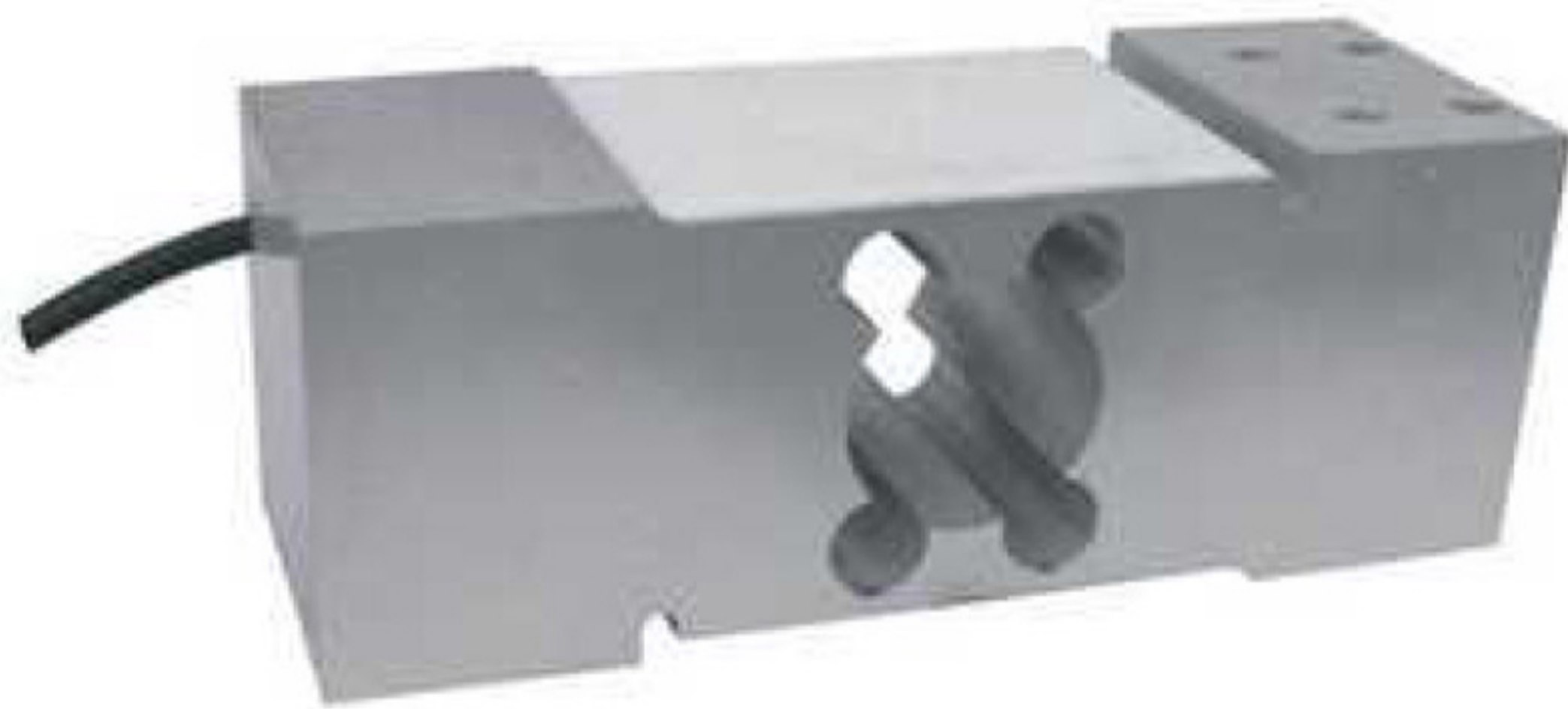


SL-362 Single Point Beam, Aluminum | IP67



RATED CAPACITY	DIMENSIONS								
	A	B	C	D	E	F	G	H	I
kg/mm									
50-1,000 kg	174.00	64.00	20.00	60.00	19.00	122.00	19.00	30.00	8-M8
lb/inches									
100-2,000 lb	6.85	2.52	0.79	2.36	0.75	4.80	0.75	1.18	8-M8

Rated Capacity:
50/60/75/100/150/200
/250/300/350/500/600
/635/750/800/1,000 kg

Rated Output:
2.0±0.2mV/V

Non-linearity:
±0.02% F.S.

Hysteresis:
±0.02% F.S.

Repeatability:
±0.02% F.S.

Creep(30 minutes):
±0.03% F.S.

Temperature Effect on Span:
±0.0015% F.S./°C

Temperature Effect on Zero:
±0.0027% F.S./°C

Zero Balance:
±1.00% F.S.

Insulation Resistance:
> 5000 MEGOHMS

Input Impedance:
410±10Ω

Output Impedance:
350±3Ω

Safe Overload:
150% F.S.

Destructive Load:
200% F.S.

Excitation Recommended:
10-15V AC/DC

Material/Finish:
Aluminum

Operation Temperature:
-10°C - +40°C (14°F - 104°F)

Cable Length:
Standard Cable
10ft/3m

Load Cell Wiring:
Red.....+Excitation
Black.....- Excitation
Green+Signal
White- Signal

Max Platform Size:
600mm x 600mm