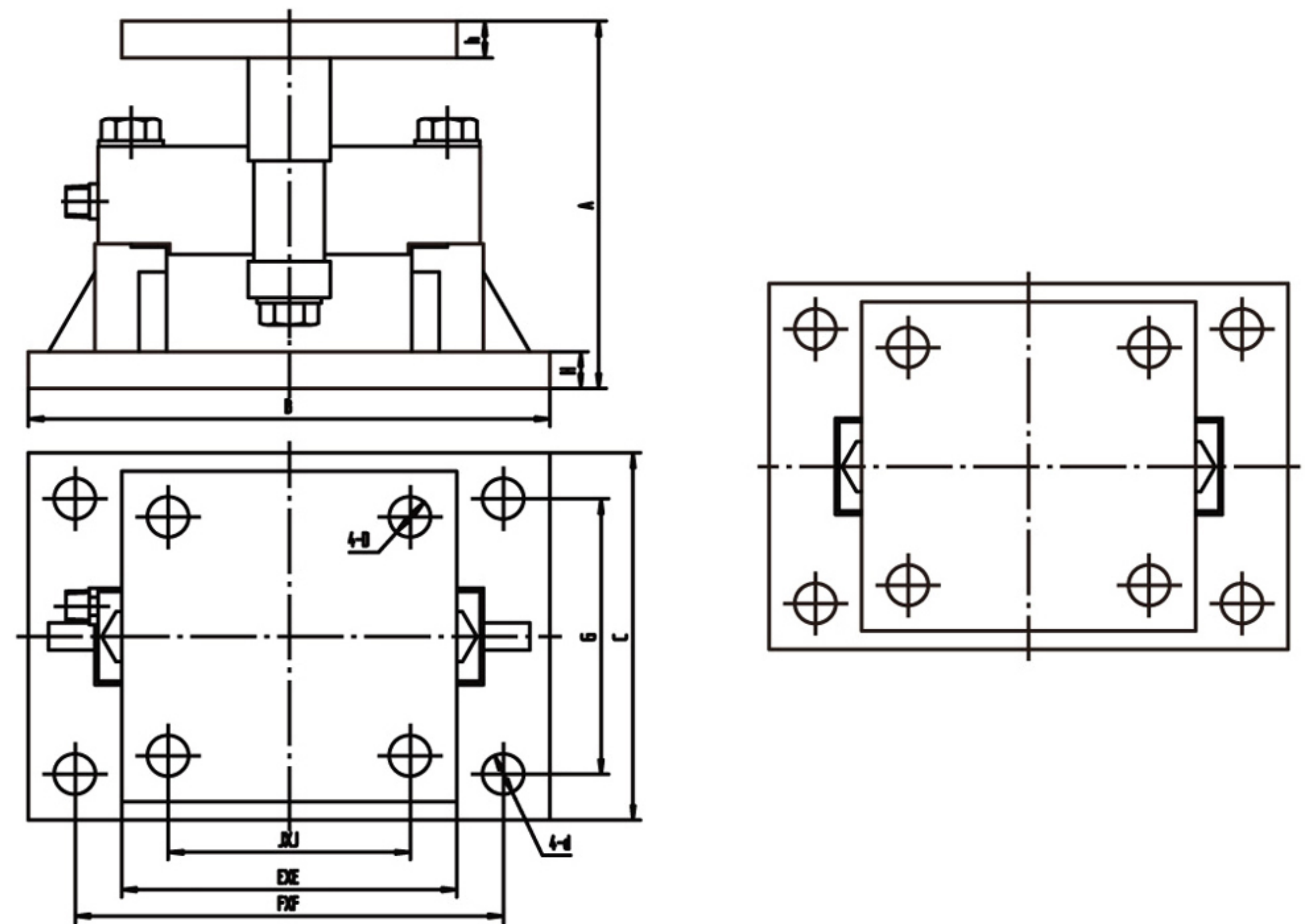


# SL-350-TM Weighing Assemblies, Nickel Plated Alloy | IP67



PRICE	
PART#	CAPACITY
SL-350-TM-20	20,000 lbs
SL-350-TM-25	25,000 lbs
SL-350-TM-30	30,000 lbs
SL-350-TM-40	40,000 lbs
SL-350-TM-50	50,000 lbs
SL-350-TM-100	100,000 lbs
SL-350-TM-200	200,000 lbs

RATED CAPACITY	DIMENSIONS											
	A	B	C	D	d	E	F	G	H	h	J	
<b>lb/inches</b>												
20K - 25K lbs	4.00	10.00	8.00	0.78	0.78	8.00	7.50	6.00	0.75	0.75	6.00	
30K - 40K lbs	4.00	14.00	10.00	0.78	0.78	8.00	11.50	7.50	1.00	0.75	6.00	
50K - 100K lbs	7.00	14.00	10.00	1.12	1.12	9.00	11.50	7.50	1.00	1.00	6.50	
200K lbs	8.00	25.00	16.00	1.63	1.63	12.00	20.00	11.00	1.50	1.50	8.00	
<b>kg/mm</b>												
9,072-11,340 kg	101.60	254.00	203.20	19.81	19.81	203.20	190.50	152.40	19.05	19.05	152.40	
13,608-18,144 kg	101.60	355.60	254.00	19.81	19.81	203.20	292.10	109.50	25.40	19.05	152.40	
22,680-45,360 kg	177.80	355.60	254.00	28.45	28.45	228.60	292.10	190.50	25.40	25.40	165.10	
90,720 kg	203.20	635.00	406.40	41.40	41.40	304.80	508.00	279.40	38.10	38.10	203.20	

**COMPLETE KIT INCLUDES:**

- 3 or 4 SL-350 alloy steel load cells
- 3 or 4 SL-350-TM compression mounts
- 1 SL-416-SS stainless junction box

**SPECIFICATIONS**
**Rated Capacity:**
**lbs:** 20K/25K/30K/40K/50K/100K/200K

**Rated Output:**

3.0mV/V

**Load Cell Resistance:**

700 OHMS

**Load Cell Cable:**

STANDARD

10K - 40K lbs: 40ft/12m

DOUBLE-SHIELDED

50K - 200K lbs: 60ft/18m

**Safe Overload:**

150% F.S

**Destructive Load:**

300% F.S

**Excitation Recommended:**

10-15V AC/DC

**Operation Temperature:**

-20°C - 60°C (-4°F - 104°F)

**Construction:**

Load Cell: Alloy Steel

Module: Alloy Steel

