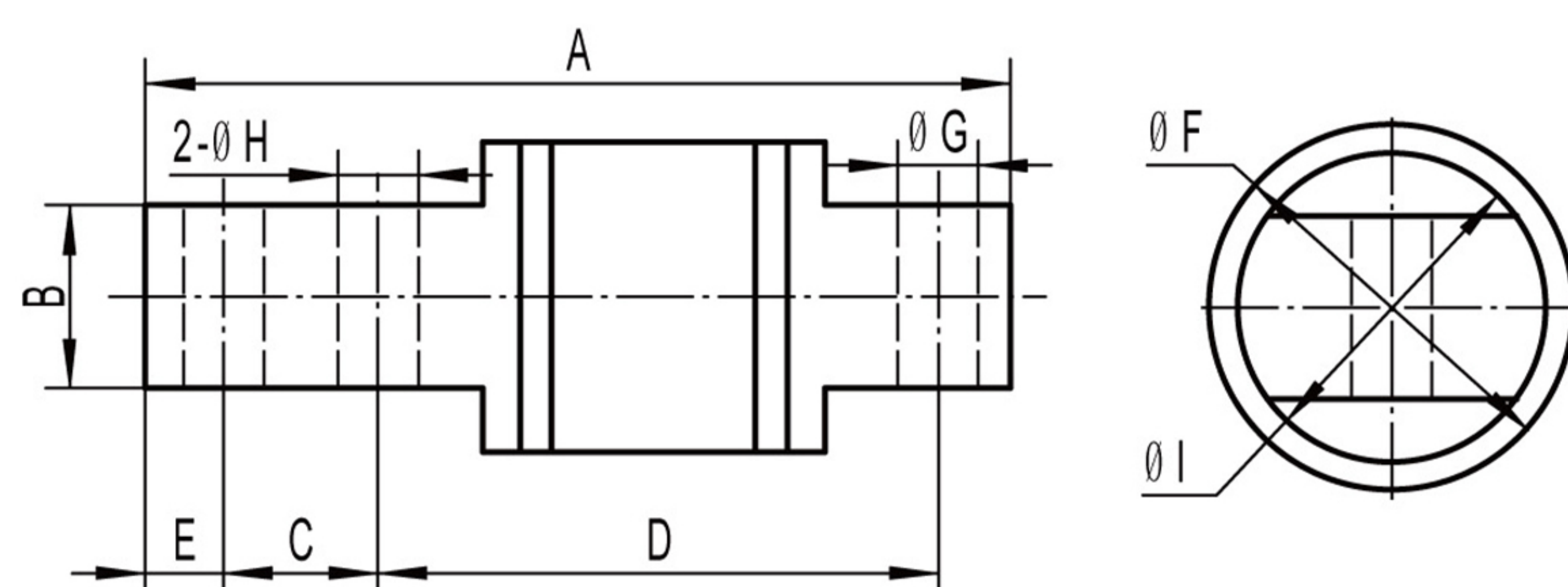


# SL-336 Single Ended Beam, Alloy Steel | IP67



## Interchangeable Products

- ◆ Artech **50210**
- ◆ Revere **5503**
- ◆ Revere **9503**
- ◆ Rice Lake **RL50210**
- ◆ Rice Lake **RL60040SST**
- ◆ Sensortronics **60040**
- ◆ Coti Global Sensors **CG-60040**

RATED CAPACITY	DIMENSIONS								
	A	B	C	D	E	F	G	H	I
<b>lb/inches</b>									
25-500 lb	2.81	0.62	0.50	1.81	0.25	1.30	0.26	0.26	1.00
<b>kg/mm</b>									
11.34-226.8 kg	71.37	15.75	12.7	45.97	6.35	33.02	6.60	6.60	25.40

**Rated Capacity:**

25/50/75/100/150 /250/500 lb

**Rated Output:**

3.0mV/V

**Non-linearity:**

±0.03% F.S.

**Hysteresis:**

±0.03% F.S.

**Repeatability:**

±0.02% F.S.

**Temperature Effect on Span:**

±0.0015% F.S./°C

**Temperature Effect on Zero:**

±0.0027% F.S./°C

**Zero Balance:**

±1.00% F.S.

**Insulation Resistance:**

&gt; 5000 MEGOHMS

**Compensated Temperature Range:**

-10°C - +40°C (14°F-104°F)

**Creep(30 minutes):**

±0.03% F.S.

**Input Resistance:**

385±20Ω

**Output Resistance:**

350±3Ω

**Safe Overload:**

150% F.S.

**Excitation Recommended:**

10-20V AC/DC

**Material/Finish:**

Alloy Steel

**Cable Length:**

Standard Cable

20ft/6m

**Load Cell Wiring:**

Red.....+Excitation

Black.....- Excitation

Green .....+Signal

White .....- Signal