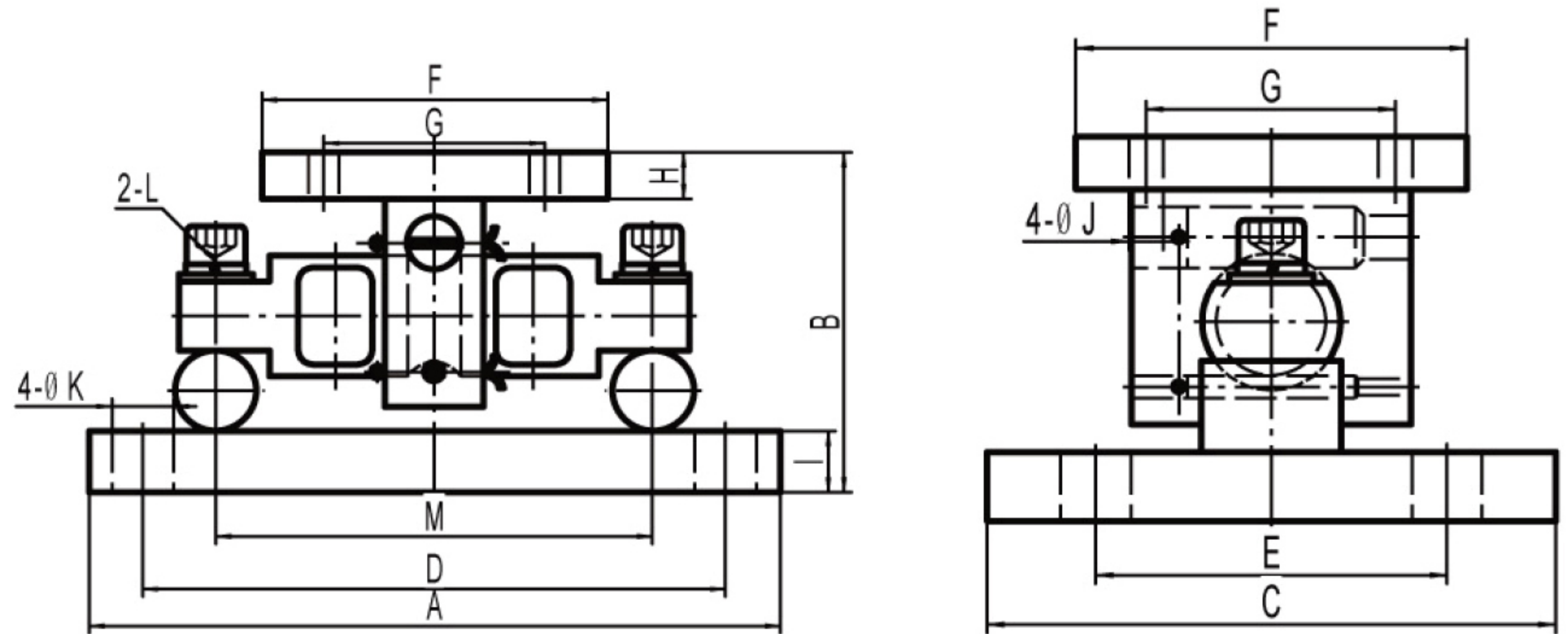
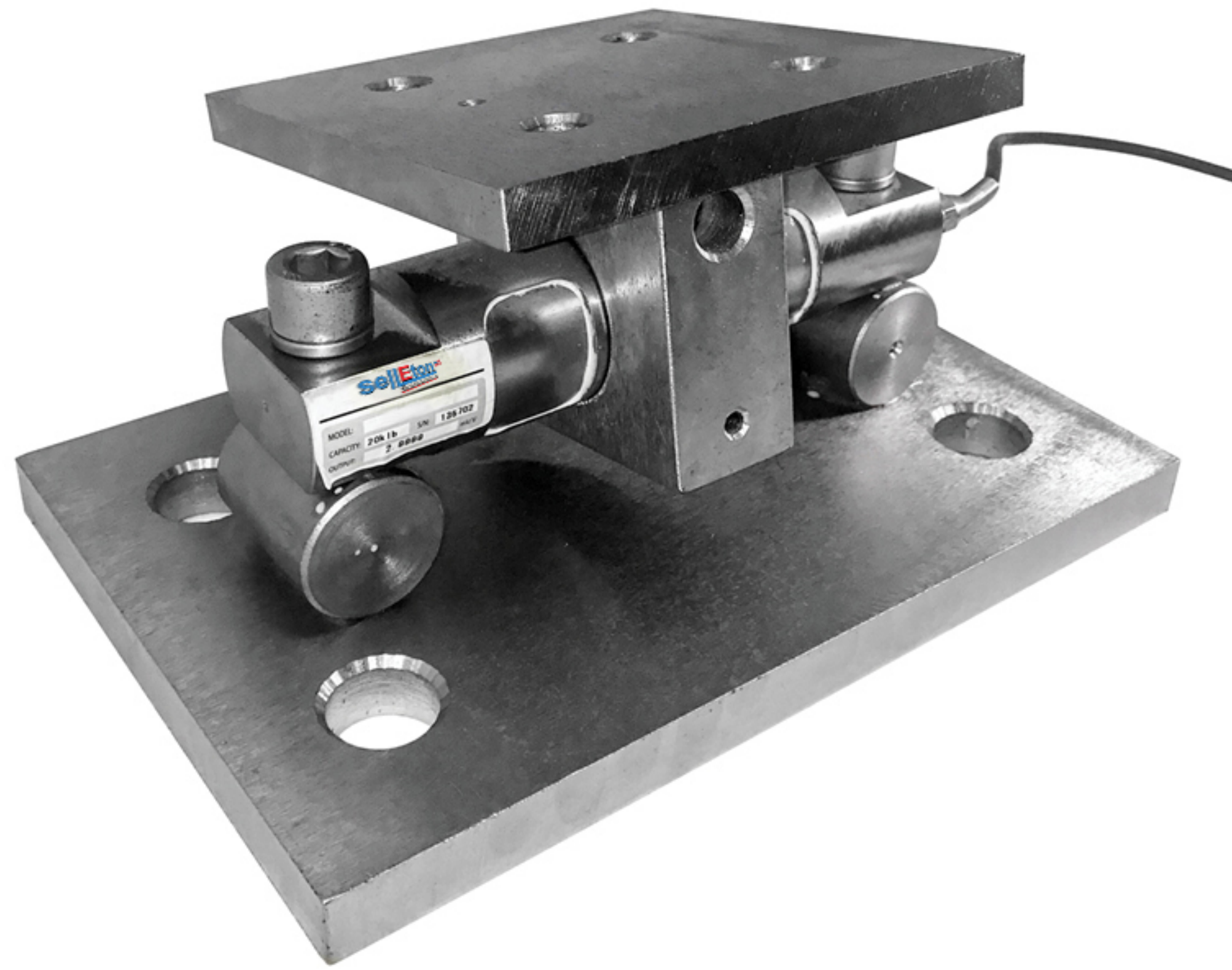


SL-320-TM Weighing Assemblies, Nickel Plated Alloy | IP67



RATED CAPACITY	DIMENSIONS												
	A	B	C	D	E	F	G	H	I	J	K	L	M
lb/inches													
5K - 20K lbs	11.00	5.31	7.50	8.00	4.00	6.00	3.00	0.50	0.75	0.56	1.06	5/8-18UNF	6.87
30K - 60K lbs	15.00	8.43	10.00	11.50	6.00	8.00	5.12	0.75	1.00	0.68	1.19	1-14UNF	8.50
100K lbs	18.00	10.37	12.00	14.00	9.00	10.00	7.50	1.25	1.25	0.81	1.38	1-14UNF	9.50
150K lbs	18.00	10.37	12.00	14.00	9.00	10.00	7.50	1.25	1.25	0.81	1.38	1-14UNF	9.50
200K - 250K lbs	26.00	16.75	12.00	20.00	6.00	12.00	9.00	2.00	2.00	1.06	1.88	1 1/2-12UNF	13.00
kg/mm													
2,268-9.072 kg	279.40	134.87	190.50	203.20	101.60	127.00	76.20	12.70	19.05	14.22	26.92	5/8-18UNF	174.50
13,068-27,216 kg	381.00	214.12	254.00	292.10	152.40	203.20	130.05	19.05	25.40	17.27	30.23	1-14UNF	215.90
45,380 kg	457.20	263.40	304.80	355.60	228.60	254.00	190.50	31.75	31.75	20.57	35.05	1-14UNF	241.30
68,040 kg	457.20	263.40	304.80	355.60	228.60	254.00	190.50	31.75	31.75	20.57	35.05	1-14UNF	241.30
90,720-113,400 kg	660.40	425.45	304.80	508.00	152.40	304.80	228.60	50.80	50.80	26.92	47.75	1 1/2-12UNF	330.20

PRICE	
PART#	CAPACITY
SL-320-TM-5	5,000 lbs
SL-320-TM-10	10,000 lbs
SL-320-TM-20	20,000 lbs
SL-320-TM-30	30,000 lbs
SL-320-TM-40	40,000 lbs
SL-320-TM-50	50,000 lbs
SL-320-TM-60	60,000 lbs
SL-320-TM-100	100,000 lbs
SL-320-TM-150	150,000 lbs
SL-320-TM-200	200,000 lbs
SL-320-TM-250	250,000 lbs

COMPLETE KIT INCLUDES:

- 3 or 4 SL-320 alloy steel load cells
- 3 or 4 SL-320-TM compression mounts
- 1 SL-416-SS stainless junction box


SPECIFICATIONS
Rated Capacity:

lbs: 5K/10K/20K/30K/40K/50K/60K/
100K/150K/200K/250K

Rated Output:

3.0mV/V

Load Cell Resistance:

700 OHMS

Load Cell Cable:

Standard Cable
5K-40K lbs: 40ft/12m
Double-Shielded
50K-250K lbs: 60ft/18m

Safe Overload:

150% F.S

Destructive Load:

300% F.S

Excitation Recommended:

10-15V AC/DC

Operation Temperature:

-20°C - 60°C (-4°F - 104°F)

Construction:

Load Cell: Alloy Steel
Module: Alloy Steel