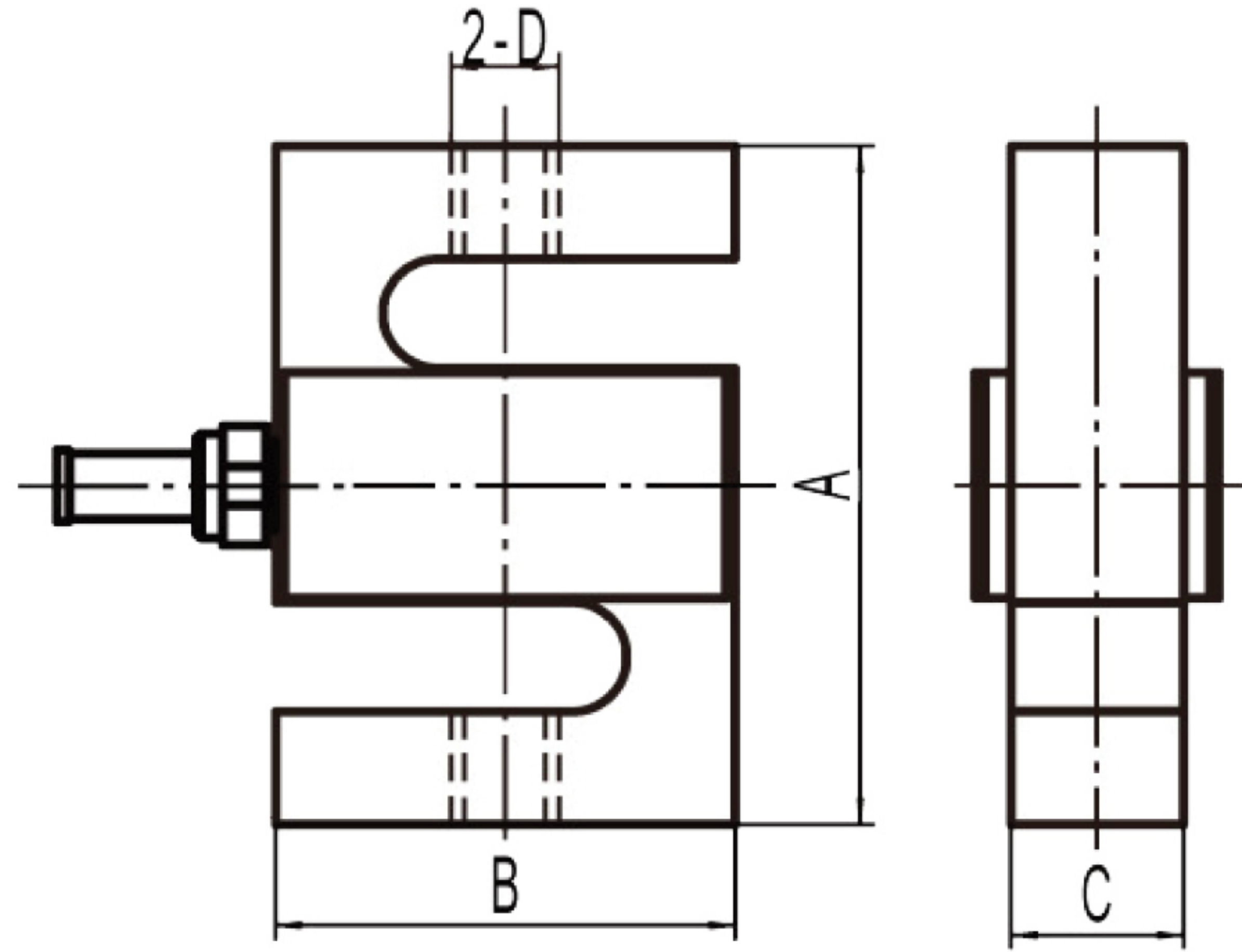


SL-312 S-Beam, Nickel Platted Alloy Steel | IP67

NTEP 1:10,000 Class 3, Single Cell



PRICE	
PART#	CAPACITY
SL-312-0.05	50 lbs
SL-312-0.1	100 lbs
SL-312-0.15	150 lbs
SL-312-0.2	200 lbs
SL-312-0.25	250 lbs
SL-312-0.3	300 lbs
SL-312-0.5	500 lbs
SL-312-0.75	750 lbs
SL-312-1	1,000 lbs
SL-312-1.5	1,500 lbs
SL-312-2	2,000 lbs
SL-312-2.5	2,500 lbs
SL-312-3	3,000 lbs
SL-312-5	5,000 lbs
SL-312-10	10,000 lbs
SL-312-15	15,000 lbs
SL-312-20	20,000 lbs
SL-312-40	40,000 lbs

RATED CAPACITY	DIMENSIONS				RATED CAPACITY	DIMENSIONS			
	A	B	C	D		A	B	C	D
lb/inches					kg/mm				
50-200	2.50	2.00	0.75	1/4-28UNF-2B	25	63.50	50.80	12.70	M6
250-300	2.50	2.00	0.75	3/8-24UNF-2B	50-70	63.50	50.80	12.70	M6
500-1,500	2.50	2.00	1.00	1/2-20UNF-2B	100-700	63.50	50.80	19.05	M12
2K-3K	3.00	2.00	1.00	1/2-20UNF-2B	1,000-1,500	76.20	50.80	25.40	M12
5K-10K	4.25	3.00	1.25	3/4-16UNF-2B	2,000-5,000	107.95	76.20	25.40	M20x1.5
15K	5.50	4.00	1.25	1-14UNF-2B	7,000	139.70	101.60	31.75	M20x1.5
20K	7.00	5.00	2.00	1 1/4UNF-12UNF-2B	10,000	177.80	127.00	50.80	M30x2
40K	7.50	5.50	2.50	1 1/2UNF-12UNF-2B	20,000	190.50	139.70	63.50	M38

INTERCHANGEABLE PRODUCTS

Celtron: **STC**
 Sensortronics: **60001**
 Rice Lake: **RL20001**
 Artech: **20210**
 Coti Global Sensors: **CGSB**

**WEIGHING MODULE AVAILABLE
 SL-312-TM**
SPECIFICATIONS
Rated Capacity:

lb: 50/100/150/200/250/300/
 500/750/1K/1.5K/2K/2.5K/3K/
 5K/10K/15K/20K/40K

Rated Output:

3.0mV/V

Non-linearity:

±0.03% F.S.

Hysteresis:

±0.02% F.S.

Repeatability:

±0.02% F.S.

Creep (30 minutes):

±0.03% F.S.

Temperature Effect on Span:

±0.0015% F.S./C

Temperature Effect on Zero:

±0.0027% F.S./C

Zero Balance:

±1.00% F.S./C

Insulation Resistance:

>5000 MEGOHMS

Input Resistance:

350±10Ω

Output Resistance:

350±5Ω

Safe Overload:

150% F.S.

Destructive Overload:

200% F.S.

Excitation Recommended:

10-20V AC/DC

Operation Temperature:

-10°C - + 40°C (14°F - 104°F)

Material/Finish:

Alloy Steel

Cable Length:

STANDARD
 50-10K lbs: 20ft/6m
 15K-40K lbs: 40ft/12m

Load Cell Wiring:

Red..... +Excitation
 Black.....-Excitation
 Green.....+Signal
 White.....-Signal