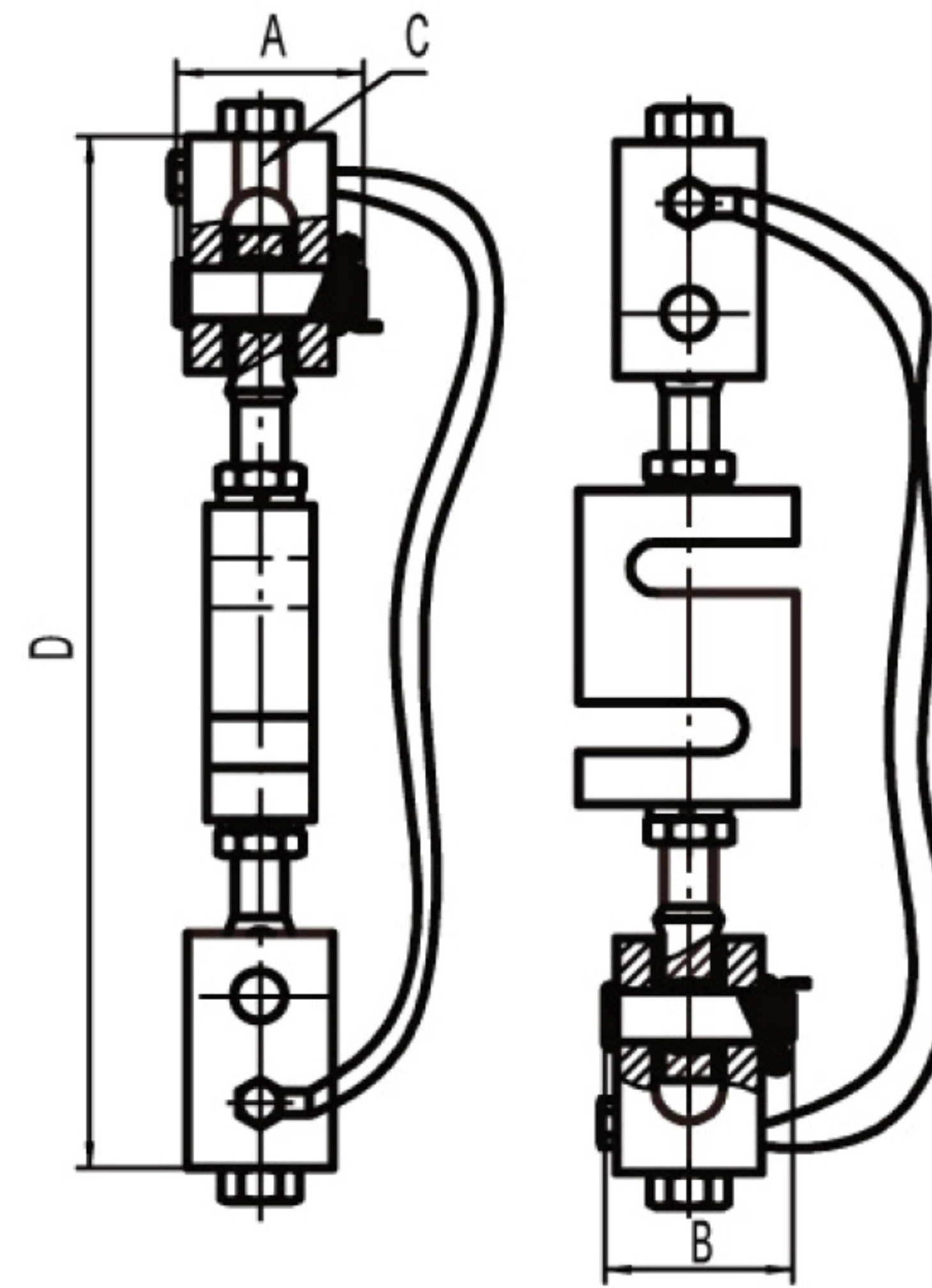
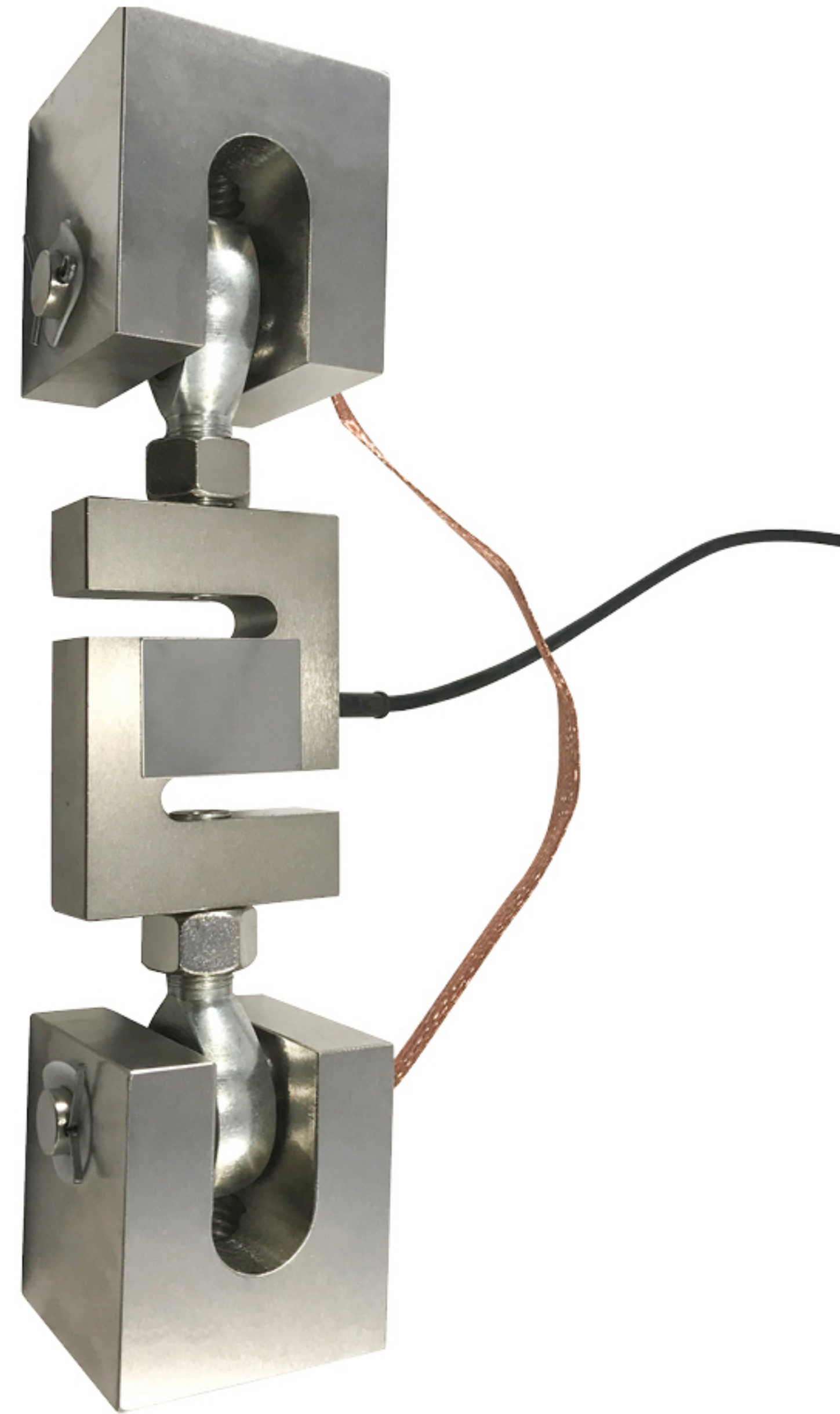


# SL-312-TM Weighing Assemblies, Nickel Plated Alloy Steel | IP67

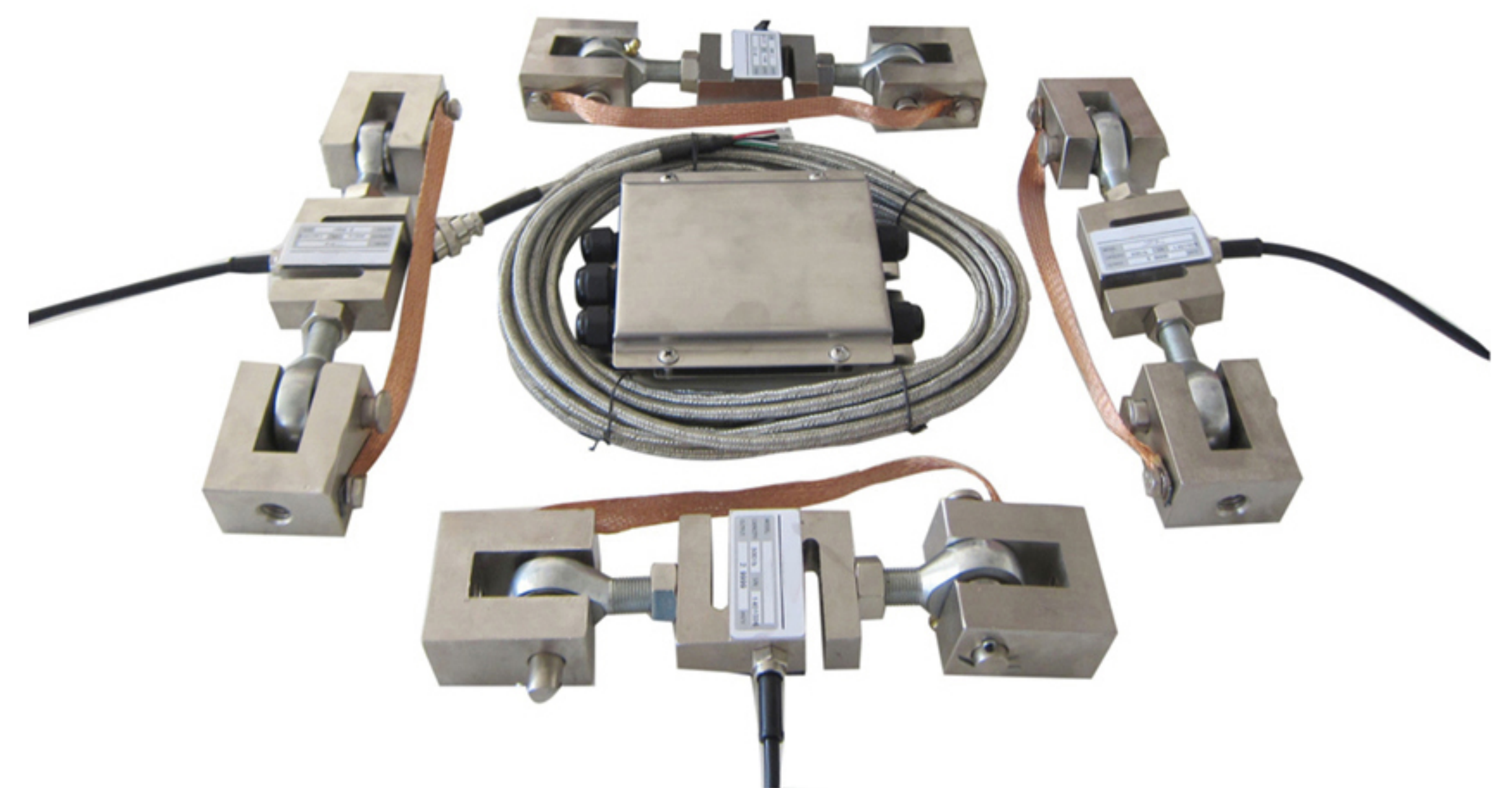


PRICE	
PART#	CAPACITY
SL-312-TM-0.05	50 lbs
SL-312-TM-0.1	100 lbs
SL-312-TM-0.15	150 lbs
SL-312-TM-0.2	200 lbs
SL-312-TM-0.25	250 lbs
SL-312-TM-0.3	300 lbs
SL-312-TM-0.5	500 lbs
SL-312-TM-0.75	750 lbs
SL-312-TM-1	1,000 lbs
SL-312-TM-1.5	1,500 lbs
SL-312-TM-2	2,000 lbs
SL-312-TM-2.5	2,500 lbs
SL-312-TM-3	3,000 lbs
SL-312-TM-5	5,000 lbs
SL-312-TM-10	10,000 lbs
SL-312-TM-15	15,000 lbs
SL-312-TM-20	20,000 lbs

RATED CAPACITY	DIMENSIONS				RATED CAPACITY	DIMENSIONS			
	A	B	C	D		A	B	C	D
<b>lb/inches</b>					<b>kg/mm</b>				
50-250 lbs	2.00	1.81	1/2-13 UNF	7.00	45-113 kg	50.80	45.97	1/2-13 UNF	177.80
50-250 lbs	2.00	1.81	3/8-16 UNF	7.00	45-113 kg	50.80	45.97	3/8-16 UNF	177.80
500-2,000 lbs	2.68	1.81	1/2-13 UNF	9.50	227-907 kg	68.07	45.97	1/2-13 UNF	241.30
500-2,500 lbs	2.68	2.68	5/8-11 UNF	9.50	227-907 kg	68.07	68.07	5/8-11 UNF	241.30
500-2,500 lbs	2.68	2.68	3/4-10 UNF	9.50	227-907 kg	68.07	68.07	3/4-10 UNF	241.30
3,000 lbs	3.37	3.37	3/4-10 UNF	10.50	1,361 kg	85.60	85.60	3/4-10 UNF	266.70
5,000 lbs	3.37	3.37	3/4-10 UNF	12.25	2,268 kg	85.60	85.60	3/4-10 UNF	311.15
5K - 10K lbs	3.37	3.37	1-8 UNF	12.25	2,268-4,536 kg	85.60	85.60	1-8 UNF	311.15
15,000 lbs	4.00	4.12	1 1/4-7 UNF	18.00	6,804 kg	101.60	104.65	1 1/4-7 UNF	457.20
20,000 lbs	5.00	4.12	1 1/2-6 UNF	20.00	9,072 kg	127.00	104.65	1 1/2-6 UNF	508.00

**COMPLETE KIT INCLUDES:**

- 3 or 4 SL-312 alloy steel load cells
- 3 or 4 SL-312-TM tension mounts
- 1 SL-416-SS stainless junction box


**SPECIFICATIONS**
**Rated Capacity:**

lbs: 50/100/150/200/250/300/500/750/  
1K/1.5K/2K/2.5K/3K/5K/10K/15K/20K

**Rated Output:**

3.0mV/V

**Load Cell Resistance:**

385 OHMS

**Load Cell Cable:**

Standard Cable:  
50 - 10K lbs: 20ft/6m  
15K - 20K lbs: 40ft/12m

**Safe Overload:**

150% F.S

**Destructive Load:**

300% F.S

**Excitation Recommended:**

10-20V AC/DC

**Operation Temperature:**

-20°C - 60°C (-4°F - 104°F)

**Construction:**

Load Cell: Alloy Steel  
Module: Alloy Steel