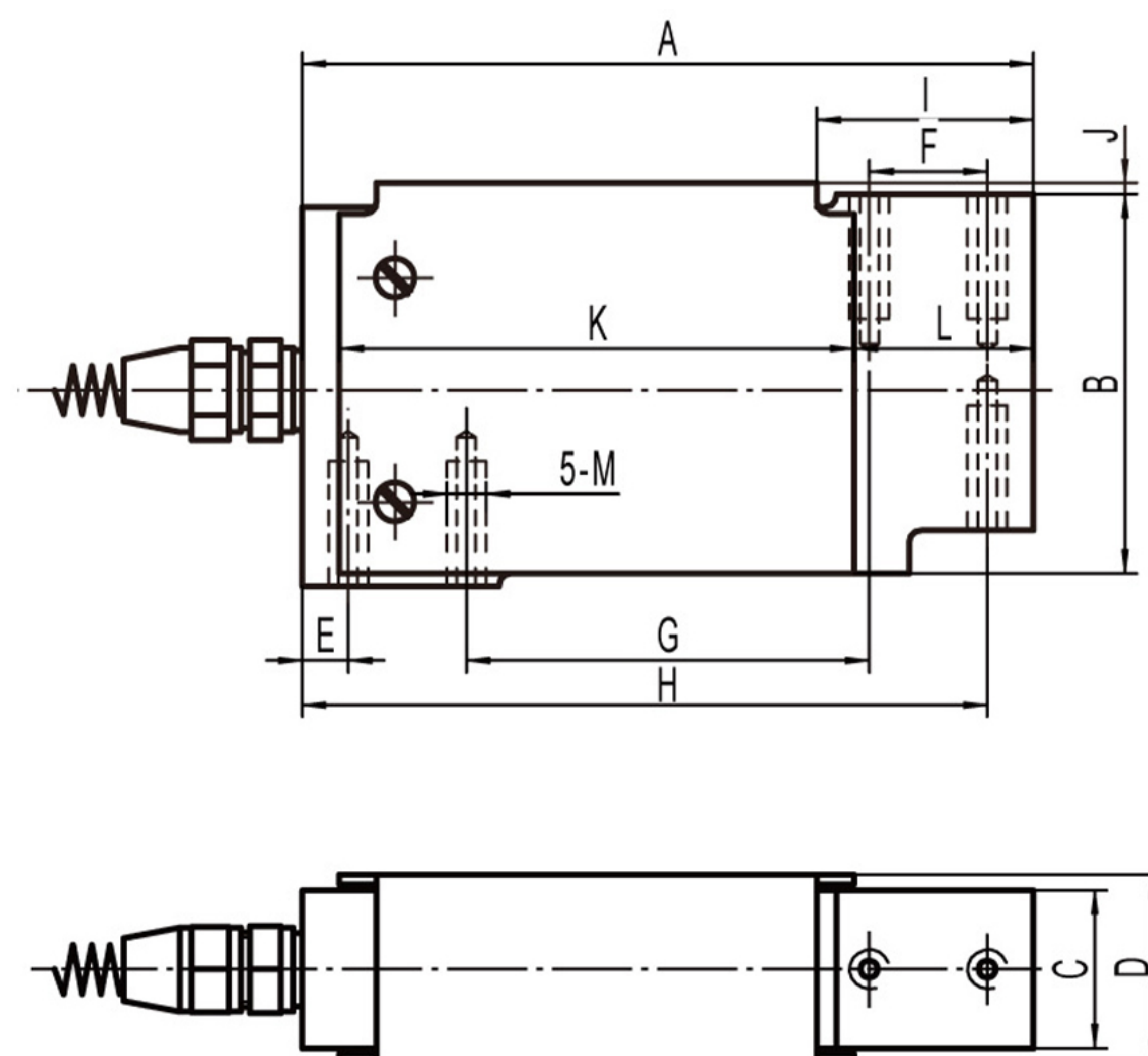
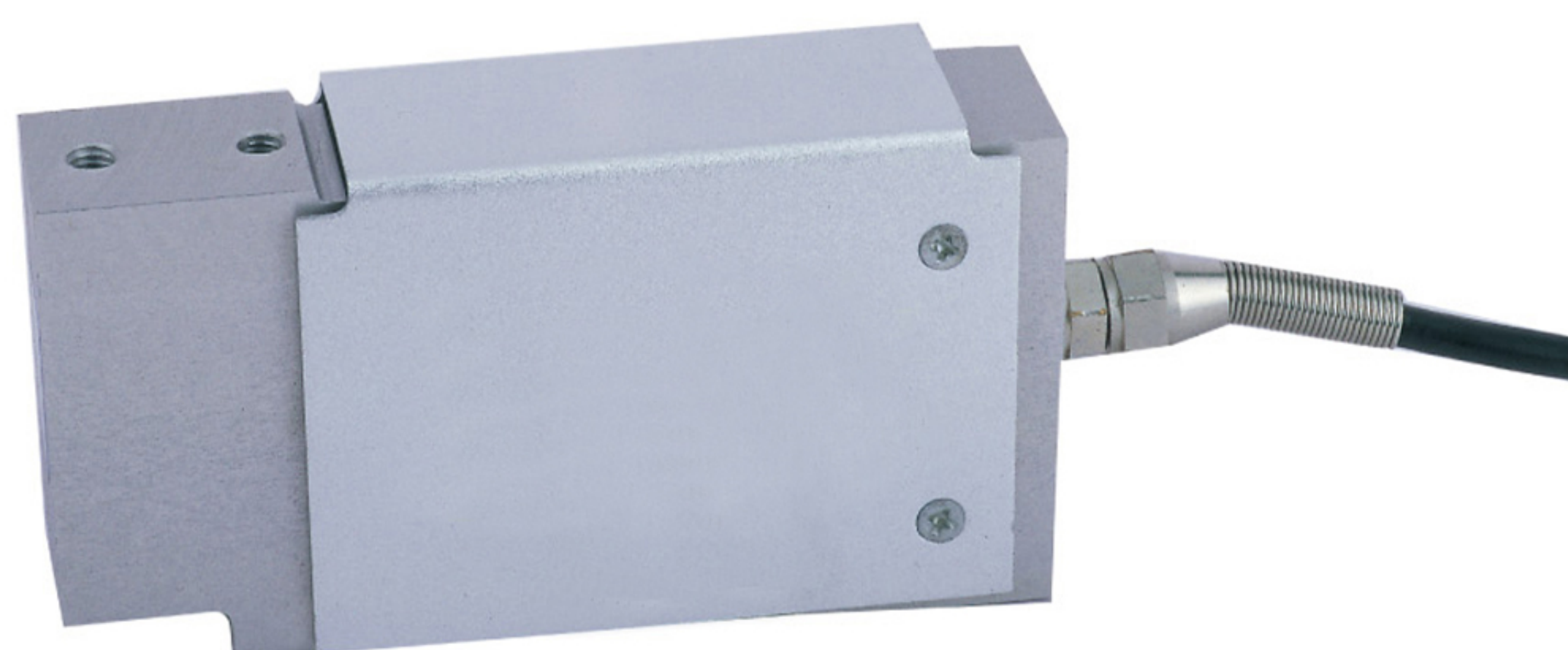


# SL-307 Single Point Beam, Aluminum | IP67



## Interchangeable Products

- ◆ Rice Lake **RL1010**
- ◆ Teda **1010**
- ◆ Coti Global Sensors **CG-1010**

RATED CAPACITY	DIMENSIONS												
	A	B	C	D	E	F	G	H	I	J	K	L	M
<b>kg/mm</b>													
3-90 kg	118.11	62.99	25.40	33.53	7.62	19.05	64.77	110.50	34.04	3.05	80.01	24.38	1/4-20UNF X 0.50dp
<b>lb/inches</b>													
5-200 lb	4.65	2.48	1.00	1.32	0.30	0.75	2.55	4.35	1.34	0.12	3.15	0.96	1/4-20UNF X 0.50dp

**Rated Capacity:**

3/5/7/10/15/20/30/50 /90kg

**Rated Output:**
 $2.0 \pm 0.2 \text{ mV/V}$ 
**Non-linearity:**
 $\pm 0.03\% \text{ F.S.}$ 
**Hysteresis:**
 $\pm 0.02\% \text{ F.S.}$ 
**Repeatability:**
 $\pm 0.02\% \text{ F.S.}$ 
**Creep(30 minutes):**
 $\pm 0.03\% \text{ F.S.}$ 
**Temperature Effect on Span:**
 $\pm 0.0015\% \text{ F.S./}^\circ\text{C}$ 
**Temperature Effect on Zero:**
 $\pm 0.0027\% \text{ F.S./}^\circ\text{C}$ 
**Zero Balance:**
 $\pm 1.00\% \text{ F.S.}$ 
**Insulation Resistance:**
 $> 5000 \text{ MEGOHMS}$ 
**Input Impedance:**
 $410 \pm 10 \Omega$ 
**Output Impedance:**
 $350 \pm 3 \Omega$ 
**Safe Overload:**
 $150\% \text{ F.S.}$ 
**Destructive Load:**
 $200\% \text{ F.S.}$ 
**Excitation Recommended:**
 $10-20 \text{ V AC/DC}$ 
**Material/Finish:**

Aluminum

**Operation Temperature:**
 $-10^\circ\text{C} - +40^\circ\text{C} (14^\circ\text{F} - 104^\circ\text{F})$ 
**Cable Length:**

 Standard Cable  
 3-90kg: 10ft/3m

**Load Cell Wiring:**

 Red.....+Excitation  
 Black.....- Excitation  
 Green .....+Signal  
 White .....- Signal

**Max Platform Size:**

400mm x 400mm