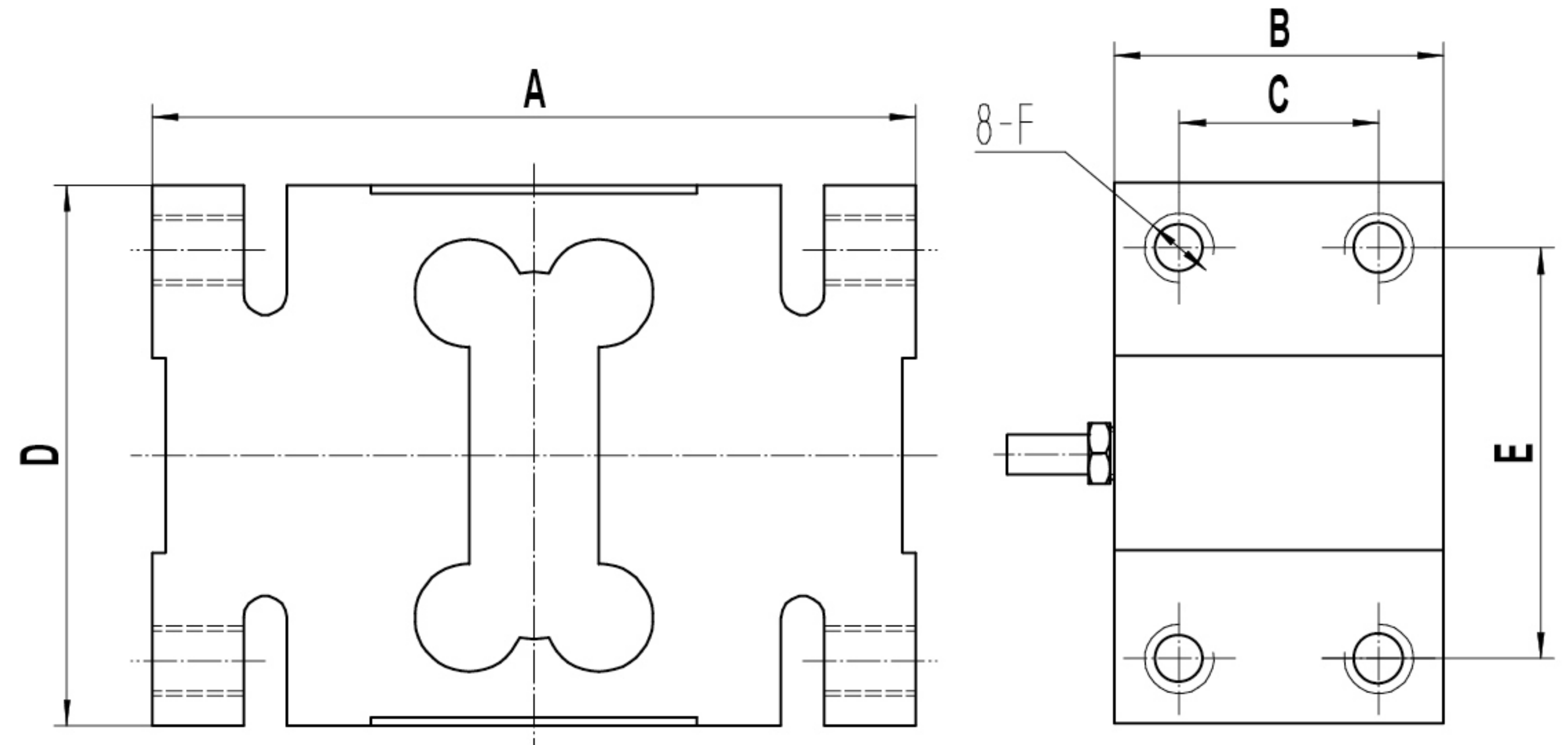


# SL-306 Single Point Beam, Aluminum | IP67



PRICE	
PART#	CAPACITY
SL-306-50	50 kg
SL-306-100	100 kg
SL-306-150	150 kg
SL-306-200	200 kg
SL-306-250	250 kg
SL-306-500	500 kg
SL-306-635	750 kg
SL-306-1K	1,000 kg
SL-306-2K	2,000 kg

RATED CAPACITY	DIMENSIONS					
	A	B	C	D	E	F
<b>lb/inches</b>						
110-440 lb	5.75	1.73	0.95	2.96	1.97	M12
550-1,650 lb	6.15	2.36	1.42	3.74	2.76	M12
2,200-4,400 lb	6.93	2.99	1.81	4.93	3.74	M16
<b>kg/mm</b>						
50-200 kg	146.00	44.00	24.00	75.00	50.00	M12
250-750 kg	156.00	60.00	36.00	95.00	70.00	M12
1,000-2,000 kg	176.00	76.00	46.00	125.00	95.00	M16

## INTERCHANGEABLE PRODUCTS

Mettler Toledo: **IL**

## SPECIFICATIONS

### Rated Capacity:

kg: 50/100/150/200/250  
500/750/1000/2000

### Rated Output:

2.0m±0.2mV/V

### Non-linearity:

±0.02% F.S.

### Max Platform Size:

800mm x 800mm

### Hysteresis:

±0.02% F.S.

### Repeatability:

±0.02% F.S.

### Creep (30 minutes):

±0.16% F.S.

### Temperature Effect on Span:

±0.0015% F.S./C

### Temperature Effect on Zero:

±0.0027% F.S./C

### Zero Balance:

±1.00% F.S./C

### Insulation Resistance:

>5000 MEGOHMS

### Input Impedance:

410±10Ω

### Output Impedance:

350±3Ω

### Safe Overload:

150% F.S

### Destructive Load:

200% F.S

### Excitation Recommended:

4-12V AC/DC

### Material/Finish:

Aluminum

### Operation Temperature:

-10°C -+ 40°C (14°F - 104°F)

### Cable Length:

Standard Cable - 10ft/3m

### Load Cell Wiring:

Red..... +Excitation  
Black.....-Excitation  
Green.....+Signal  
White.....-Signal