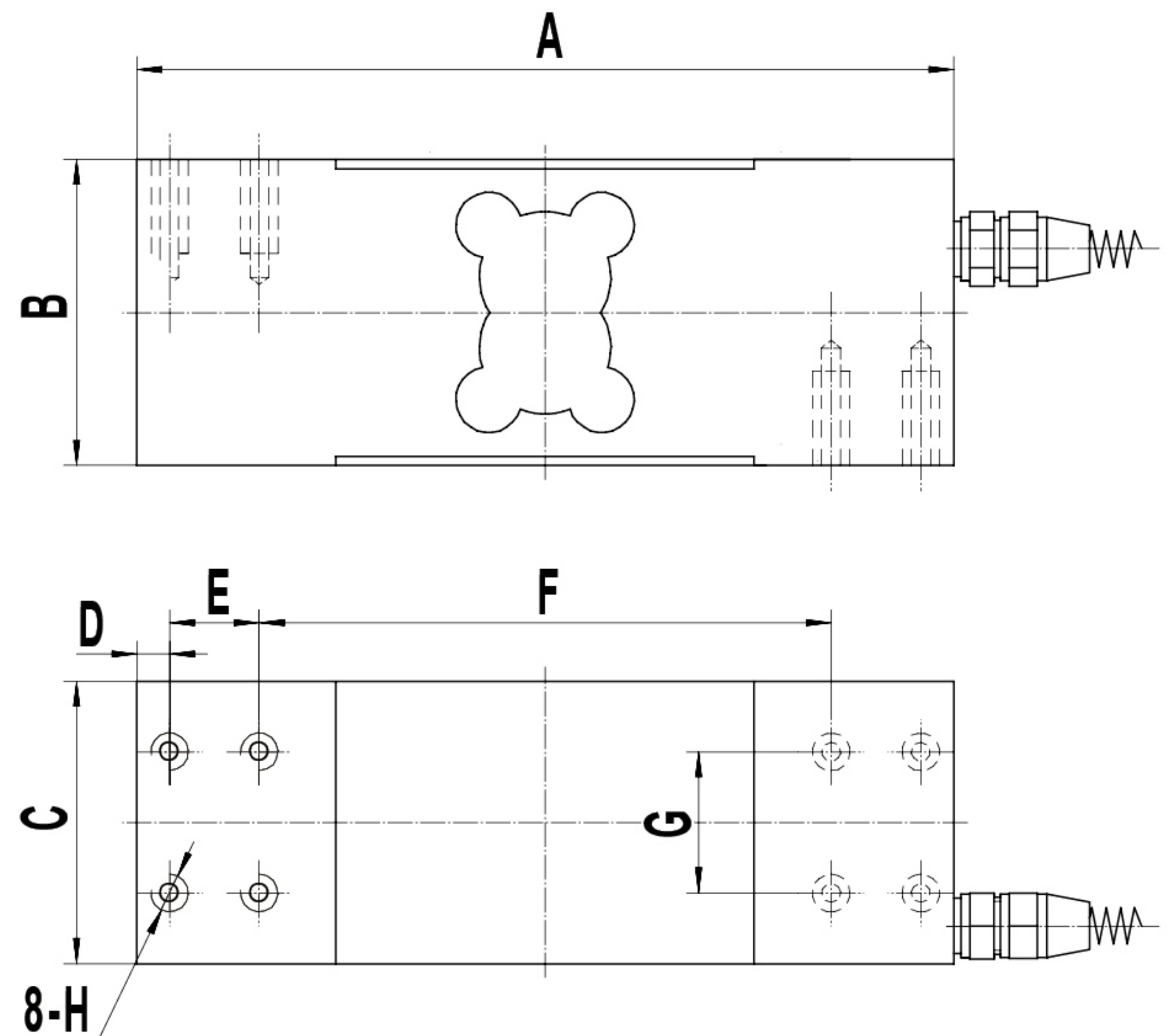
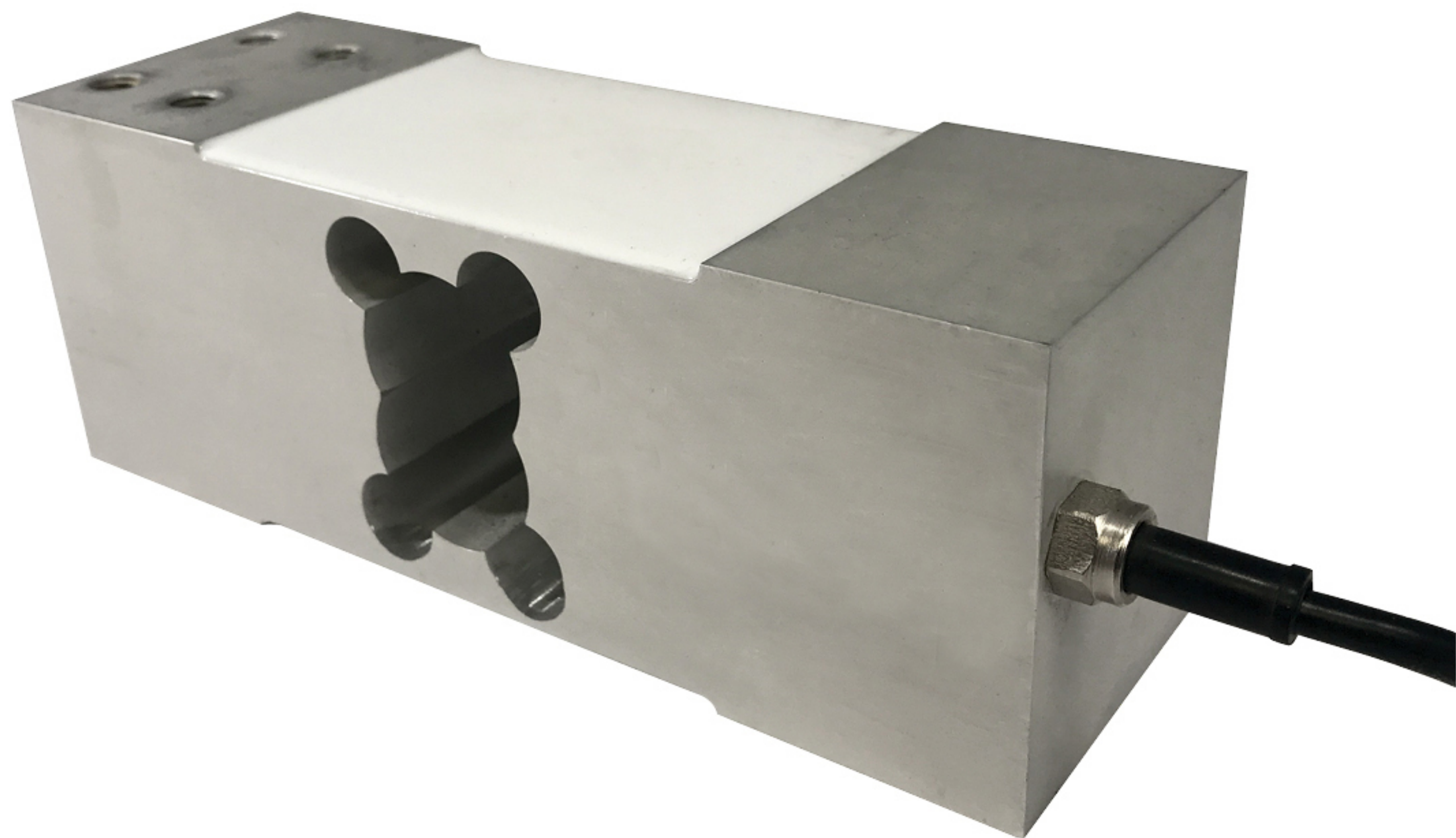


SL-305 Single Point Beam, Aluminum | IP67



PRICE	
PART#	CAPACITY
SL-305-50	50 kg
SL-305-75	75 kg
SL-305-100	100 kg
SL-305-150	150 kg
SL-305-200	200 kg
SL-305-250	250 kg
SL-305-300	300 kg
SL-305-500	500 kg
SL-305-635	635 kg
SL-305-800	800 kg

RATED CAPACITY	DIMENSIONS							
	A	B	C	D	E	F	G	H
lb/inches								
110-1,650 lb	6.85	2.56	2.36	0.28	0.75	4.80	1.18	M8 x 1.25 x 0.79dp
kg/mm								
50-635 kg	173.99	65.02	59.94	7.11	19.05	121.92	29.97	M8 x 1.25 x 0.79dp

INTERCHANGEABLE PRODUCTS

HBM: **PW24** Teda: **1263**
 Transcell: **FAV** Coti Global Sensors: **CG-50-2**

SPECIFICATIONS
Rated Capacity:

kg: 50/75/100/150/200/250/
300/500/635/800

Rated Output:

2.0m±0.2mV/V

Non-linearity:

±0.02% F.S.

Max Platform Size:

600mm x 600mm

Hysteresis:

±0.02% F.S.

Repeatability:

±0.02% F.S.

Creep (30 minutes):

±0.03% F.S.

Temperature Effect on Span:

±0.0015% F.S./C

Temperature Effect on Zero:

±0.0027% F.S./C

Zero Balance:

±1.00% F.S./C

Insulation Resistance:

>5000 MEGOHMS

Input Impedance:

410±10Ω

Output Impedance:

350±3Ω

Safe Overload:

150% F.S

Destructive Load:

200% F.S

Excitation Recommended:

10-20V AC/DC

Material/Finish:

Aluminum

Operation Temperature:

-10°C - + 40°C (14°F - 104°F)

Cable Length:

Standard Cable - 10ft/3m

Load Cell Wiring:

Red..... +Excitation
 Black.....-Excitation
 Green.....+Signal
 White.....-Signal

Max Platform Size:

600mm x 600mm