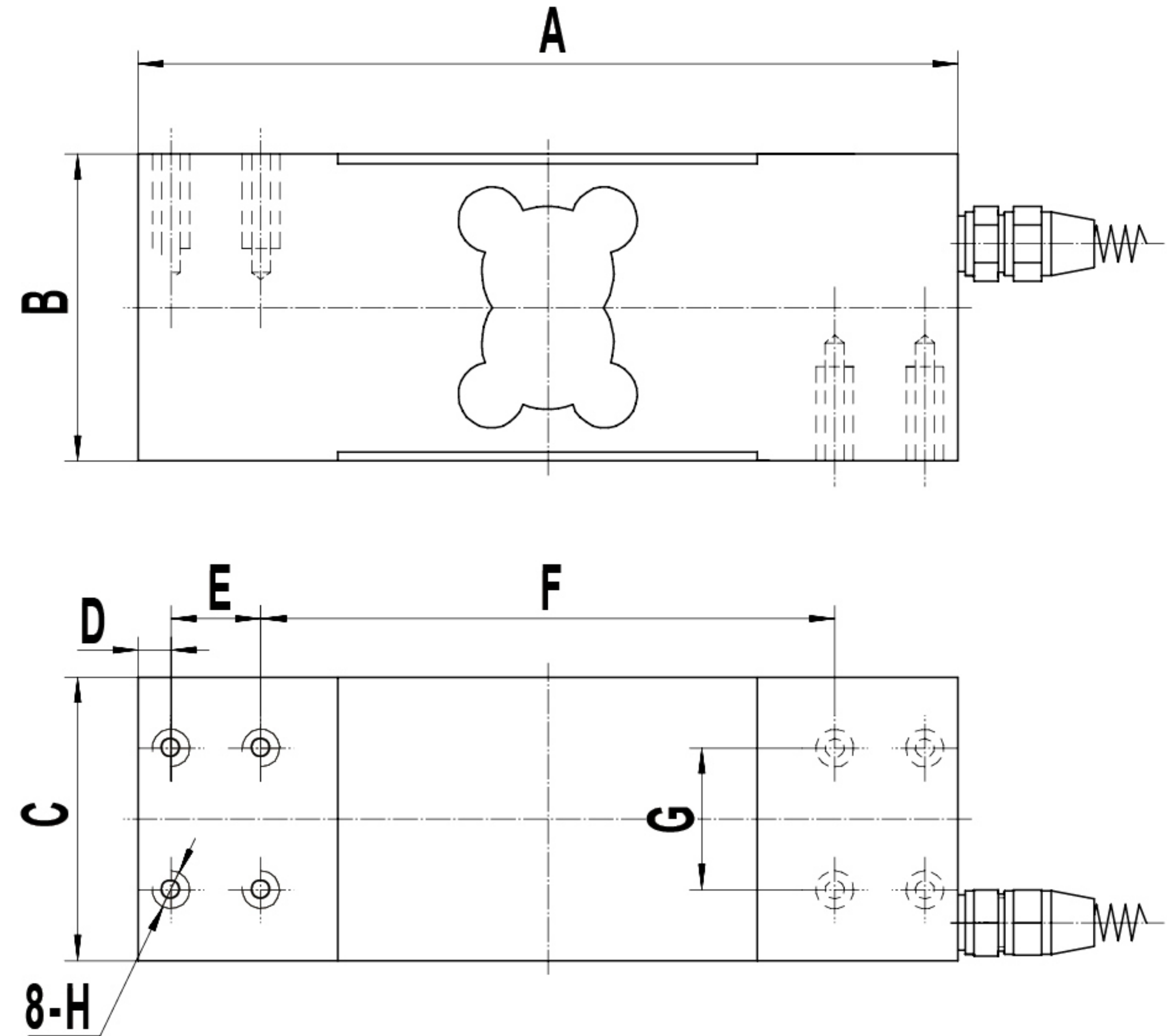
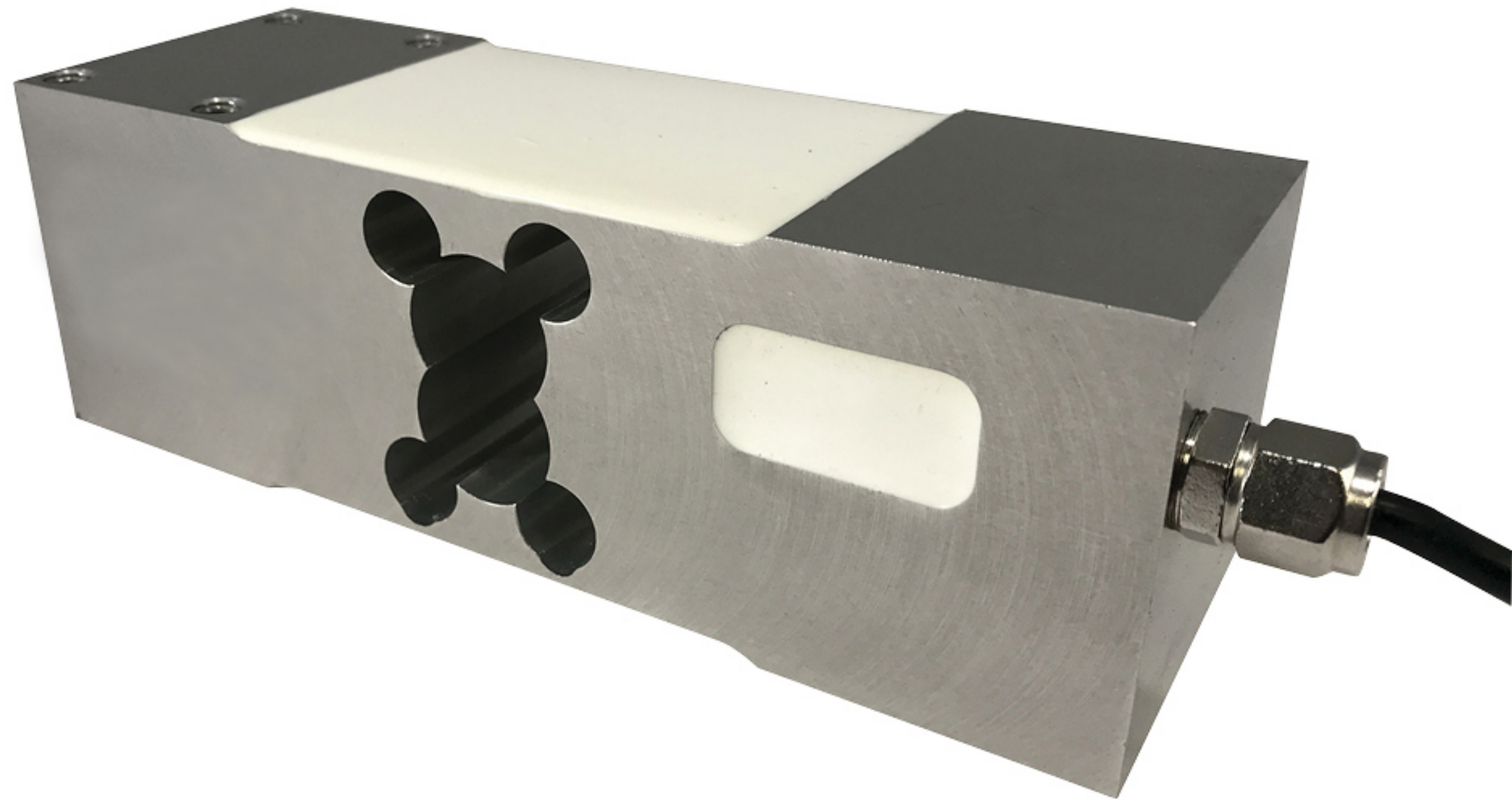


SL-304 Single Point Beam, Aluminum



PRICE	
PART#	CAPACITY
SL-304-50	50 kg
SL-304-75	75 kg
SL-304-100	100 kg
SL-304-150	150 kg
SL-304-200	200 kg
SL-304-250	250 kg
SL-304-300	300 kg
SL-304-500	500 kg
SL-304-635	635 kg
SL-304-1000	1000 kg

RATED CAPACITY	DIMENSIONS								
	A	B	C	D	E	F	G	H	
lb/inches									
110-1,650 lb	7.40	2.45	2.49	0.22	1.38	4.21	1.97	5/16-18UNFx0.62dp	
kg/mm									
50-635 kg	187.96	62.23	63.25	5.59	35.05	106.93	50.04	5/16-18UNFx0.62dp	

INTERCHANGEABLE PRODUCTS

HBM: **PW16** Mettler Toledo: **MOP-1260**
Rice Lake: **RL1260** Rice Lake: **RLPWM16**
Tedea: **1260S** Tedea: **1260**
Coti Global Sensors: **CG-50-1**

SPECIFICATIONS

Rated Capacity:
kg: 50/75/100/150/200/250/
300/500/635/1000

Rated Output:
2.0mV/V±10%

Non-linearity:
±0.02% F.S.

Max Platform Size:
600mm x 600mm

Hysteresis:
±0.02% F.S.

Repeatability:
±0.02% F.S.

Creep (30 minutes):
±0.03% F.S.

Temperature Effect on Span:
±0.0015% F.S./C

Temperature Effect on Zero:
±0.0027% F.S./C

Zero Balance:
±1.00% F.S./C

Insulation Resistance:
>5000 MEGOHMS

Input Impedance:
410±10Ω

Output Impedance:
350±3Ω

Safe Overload:
150% F.S.

Destructive Load:
200% F.S.

Excitation Recommended:
10-20V AC/DC

Material/Finish:
Aluminum

Operation Temperature:
-10°C - + 40°C (14°F - 104°F)

Cable Length:
Standard Cable - 10ft/3m

Load Cell Wiring:
Red..... +Excitation
Black.....-Excitation
Green.....+Signal
White.....-Signal