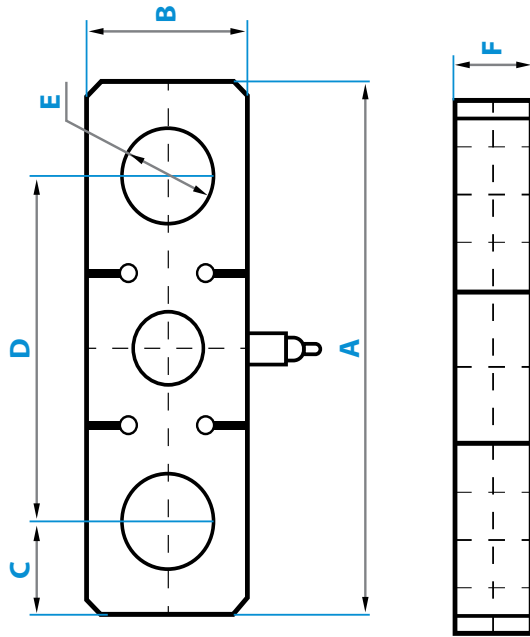


OP-927W

WIRELESS TENSION LINK SYSTEM

Optima Scale's Wireless Tension Load Cell Link System is designed as a stable, reliable and high accuracy scale to measure the force in your tension line. This scale system can withstand harsh environments and is suitable for tension applications like hanging crane scales, lifting systems and winching. There are openings on both ends of the alloy steel load cell which allow you to connect hooks, shackles, wire ropes, or whatever your rigging needs may be. Our scale is available in capacities ranging from 10,000-2w00,000 lbs.

Tension Link Load Cell



Indicator with RF Wireless Receiver



RATED CAPACITY	DIMENSIONS					
	A	B	C	D	E	F
lb/inches						
10K lbs	11.15	3.55	7.21	1.97	1.50	1.97
25K lbs	11.15	3.55	7.21	1.97	1.50	1.97
50K lbs	13.53	4.33	8.27	2.01	1.69	2.13
100K lbs	16.55	5.12	11.82	2.81	1.97	2.36
150K lbs	19.70	6.30	13.79	3.15	2.36	2.96
200K lbs	21.67	6.70	14.97	3.80	2.76	3.35
250K lbs	23.64	7.09	15.76	4.02	3.15	3.94
kg/mm						
4,536-18,144 kg	283.00	90.00	183.00	50.00	38.00	50.00
22,680 kg	318.00	110.00	210.00	51.00	43.00	54.00
45,360 kg	420.00	130.00	300.00	71.40	50.00	60.00
68,040 kg	500.00	160.00	350.00	80.00	60.00	75.00
90,720 kg	550.00	170.00	380.00	96.40	70.00	85.00
113,400 kg	600.00	180.00	400.00	102.00	80.00	100.00

INDICATOR FEATURES:

- Multiple weighing units: (lb/kg/g/oz/lb:oz)
- Gross/Tare/Zero
- Multiple Hold functions
- Count weighing
- Accumulation weighing
- Overload / Underload alarm
- Power saving mode
- Automatic date and time update
- Ability to modify gravity based on different geographical locations
- Splash proof keyboard and display
- Able to connect to a scoreboard
- LED or LCD display option
- NTEP approved for 5,000 divisions
- 1" LED or LCD display with backlight
- Options: Relay & Analog output