

# ARCHETYPES



**THE EARTH MOTHER:** The Earth Mother archetype returns us to a safe and nurturing place within. It connects and grounds us with the energy of Mother Earth, reminding us of our earthly purpose. Let the Earth Mother hold you in her loving arms so you can walk your path without fear and shed the shadow archetype of the Victim. Reclaim your connection to her wisdom and reclaim your connection to your true self.



**THE SOVEREIGN:** The Sovereign invites us to step into our own authentic power and embrace our co-creative masculine and feminine energies. When we are connected with our authentic power we can maintain healthy personal boundaries and relationships, channel creativity, manifest abundance, and live a life of co-creative service. It's time to stop grasping at external forms of power and return to reign your own kingdom.



**THE WARRIOR:** If you experience feelings of powerlessness in your life, it is time to call on your Warrior archetype. This archetype helps us transform feelings of anger, rage and hurt into happiness, courage and empowered action. It gives us the confidence to protect our boundaries and stand up for what is true for us. Release the addictions and patterns that keep you stuck. You are being called to live an empowered life and be a leader for change.



**THE LOVER:** The Lover helps you to forgive those who have hurt you and calls forth the unconditional love and compassion already in your heart. When you dissolve the walls around your heart so that you can love yourself, your capacity to love others will also expand. The Lover is knocking at the door of your heart so that you can love without limitation, and protect that love with clear boundaries. Open the door to love.



**THE PROPHET:** The Prophet requires us to live our truth and use our voice in co-creative, harmonious expression. This archetype represents conscious communication and aligns our words and actions with our sense of integrity. Be in the moment, channel your truth, and release the outcome of that which you cannot control. The moment of truth is here, and it's you.



**THE SAGE:** The intellect and the ego are only part of your inner voice. The Sage archetype is here to remind us that we have other ways of knowing. Divine guidance and the voice of the heart are speaking to you. The Sage restores clear vision by helping you to access your inner wisdom: your intuition. Put your worries aside. The Sage assures us that we already know the answer.



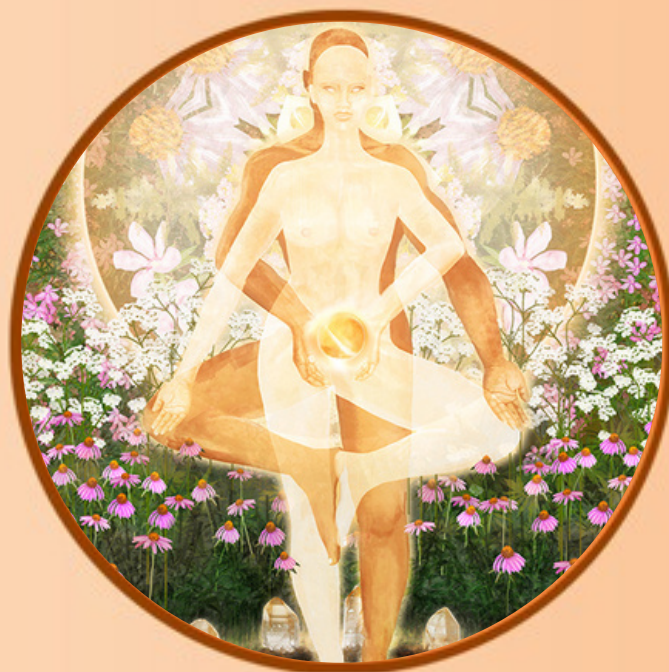
**THE GURU:** When we have lost our faith and sense of connectedness, the Guru reminds us that we are all ONE. It renews our sense of higher purpose and trust that all is as it's meant to be. The grace of the Guru aligns our spiritual with our inner truths so that we can live out our soul's calling. Discover your inner guru and bring the Divine within to life.



# EVOLVING ARCHETYPES



**THE SHAMAN:** If the Shaman has emerged for you right now, you have the support you need to do your soul work. It is time to face your shadow self, heal karmic patterns, and retrieve the parts of your soul that have been shunned or buried. Work with the Shaman in sacred ritual or ceremony and honour the cycles and rhythms of the earth; in doing so, you will find the courage to heal destructive patterns and celebrate the light and the dark of your own being. The Shaman will free you from your self-imposed limitations so that you can stand in the power of who you are and why you are here.



**THE MYSTIC:** It is time to put down the mirror and move from "me" to "we." The Mystic will dissolve your individualistic ego identity and ignite the creative energy of your second chakra in resolute faith of a higher calling. A balancer of polarities, the Mystic will also facilitate Sacred Union of the feminine and masculine within to allow you to live a spiritual life with soulful earthly purpose. When your identity is caught up in material things, relationships, personal desire or other accolades of the ego, the Mystic will remind you that your true self emerges when you faithfully step into service-oriented purpose.



**THE SPIRITUAL WARRIOR:** You are being called to live authentically and "walk your talk." The high road is not always the easy road and the Spiritual Warrior will provide you with the courageous endurance to live your truth, even when doing so requires sacrifice and may cause pain. The Spiritual Warrior will help you hold yourself accountable and ensure your actions are in alignment with your values; it is only when you are true to yourself that you are truly in your power.



**THE MAGICAL CHILD:** If you find yourself disheartened or disillusioned, it's time to call upon the Magical Child. The Magical Child will return joy and innocence to your being and open your heart to love and light again. When all you see are dead-ends, let the Magical Child remove your blinders to reveal a world of infinite possibility and help you see the good in your current situation.



**THE MUSE:** The voice of your soul can no longer be silenced! The Muse is here to support you to live your purpose through your own unique creative expression. Breathe life into your dreams: inspire and be inspired. Call on the Muse to discover how to manifest your truth in soulful co-creation with the Universe.



**THE ALCHEMIST:** The Alchemist allows you to "be the change you wish to see". It is time to reap the rewards of your life-learning and share your personal growth with others. As you step into your truth, the Alchemist gives you the confidence to carry your inner transformation out into the world to create positive change. The Alchemist is showing you that each moment is an opportunity to grow, to show up differently, and to transform and be transformed.



**THE PRIEST AND PRIESTESS:** The Priest and Priestess free us from our own self-serving agenda so that we can show up in Oneness. When we drop the ego that seeks personal gain, we make ourselves available to be a conduit for light and love with all around us. The Priest and Priestess will help you release hard, rigid thoughts and feelings and move you towards altruistic, heart-based living. Letting go and flowing in this way ultimately leads to inner cosmic illumination and mystical expansion.



# EVOLVING ARCHETYPES



**THE ENCHANTER/ENCHANTRESS:** The Enchanter/Enchantress allows full and complete alignment with your Highest Truth. It allows you to live in your Higher Heart and embody Light and love unconditionally. It provides a portal to the 5th, or multi-dimensional energies, by assisting you to be fully feeling and integrate multi-dimensional consciousness with grace and surrender. Embracing the Enchantress/Enchanter enables you to deeply connect to nature, animals, the universe and intrinsically merge into a state of Oneness. This assists your evolution by returning you to your natural state of Being and aids you in attuning to the higher messages about the changes you need to make in your life. It helps you to contact the collective consciousness of humanity, the planet and the universe, as well as reclaiming your power, courage and responsibility in service to the higher good.



**THE SORCERER/SORCERESS:** The Sorcerer/Sorceress is born with innate inner knowledge, a natural set of skills that she or he is born with. It is the closest archetype to CREATION, the universal energies connected to the Divine Feminine or Divine Goddess. This archetype allows one to see with more clarity that which no longer serves one's highest good, peeling away old belief systems and limitations. This aids you in feeling that you intuitively understand your true talents and purpose in life without "searching". Deeper understanding of this brings an increased level of accountability for each of us. The Sorceress/Sorcerer lives within the spiral of creation and is able to read the cosmic intricacies needed to create your own life experiences, you are not dependent on others to weave your reality. This is about living life on your own terms. As karmic residue leaves there is a gradual authentic remembering, bringing about the True YOU.

"Plant medicine, or any kind of vibrational medicine, actually cushions us from our own destructive patterns. To use an analogy, it can be helpful to think of vibrational medicine as the first mate that steers the ship through the storm, while the captain, our dark, self-sabotaging Lower Self, and our domineering ego, is drunk in his cabin. Plants, in particular, are here to support us on our sometimes precarious inner journey; we are often our own worst enemies."

***An excerpt from Blog Post: Befriending The Saboteur Archetype  
~ Samantha Orthlieb | [Read the full blog post here.](#)***



Access your inner healer by learning how to connect with plants and crystals in the form of vibrational medicine.

Get Your Copy of My Book Today!



Amplify your energy with Oracle Cards  
and the book in a bundle!



Access your inner healer by learning how to connect with plants and crystals in the form of vibrational medicine.

Get Your Copy of My Book Today!



Amplify your energy with Oracle Cards  
and the book in a bundle!