

WHAT SHE WANTS...

MARY McCARTNEY
Photographer



THE TEALIGHT
Martha Freud creates botanical-inspired, bespoke light fittings. I love the idea of going for a family walk and sending her the leaves, petals and feathers you find, which she can then emboss onto tealight holders, recording your memories for ever.



THE MARKET
At the **Marylebone Farmers' Market** I chat to the people behind the products I'm buying. It is important to know where your food comes from, and at the moment there are some amazing tomatoes.



THE PROJECT
The Impossible project aims to get people working together to help each other out. For example, if you're a plumber, you can offer your skills and someone might help you in return - getting back to British community values.

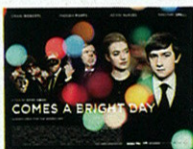
THE DESIGN
This **Falabella Shaggy Deer Cross Body Shoulder Bag** is from my sister Stella's collection and is my favourite because it is the perfect size - not too big, so I can't fill it with things I don't need, but big enough for all the essentials. The canary yellow is summery yet timeless.



THE TIMEKEEPER
I love this **Font Clock** by **Established & Sons** - it continually displays the time and date in different fonts. I like interiors pieces that keep your attention and never date.



THE CULTURE
I often go to the **National Portrait Gallery** in London for inspiration. If you become an associate member you can attend private viewings and breakfasts with curators and artists outside opening hours.



THE EVENT
My husband's first feature film, **Comes a Bright Day**, opened at the Empire Leicester Square on July 13. I'm biased, I know, but it's a great British independent film - a love story turned jewellery heist.



THE CRAFT
To celebrate 100 years since its invention, the **Neon Workshop** is running courses where you can design your own neon sign. I had one made, which spells out the names of my children.

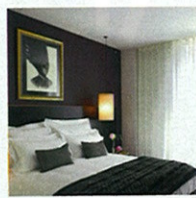
THE INDULGENCE
I was given a bar of **Amelia Rope's** chocolate for Easter and I'm now hooked. They are all made in England, and have deliciously original flavours, such as spearmint, rose and dark mandarin.



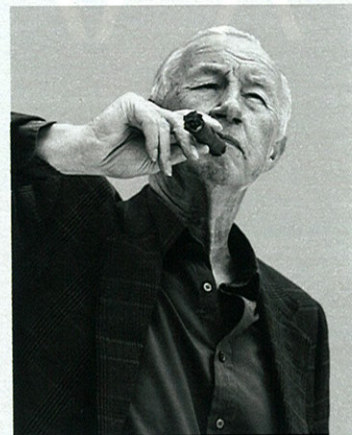
THE CULT FILMS
This summer I will be going to see the Hitchcock celebration series at the **British Film Institute** - a wonderful champion of British film-making.

WHAT HE WANTS...

TERENCE CONRAN
Designer



THE PLACE TO BE
In September the **South Place Hotel** in Moorgate will open. With 80 rooms, three bars and a rooftop restaurant, it's an incredibly exciting addition to the London hotel scene.



THE RESTAURANT
The latest Corbin and King restaurant, **Brasserie Zédel**, is modelled on a classic Parisian brasserie. The Art Deco interior provides an authentic backdrop to the exceptional food on the well-priced menu.

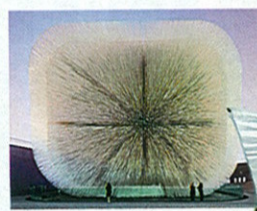


THE ARTIST
Illustrator **Adam Simpson** crosses the boundaries between fine art and graphic design and creates vivid streetscapes.

THE GALLERY
The recently relaunched **William Morris Gallery** is an excellent reason to visit his birthplace, Walthamstow.



THE DESIGNER
The furniture designer **Bethan Gray** has a bright future - she has an exquisite appreciation of the materials that she works with and a fine attention to detail.



THE EXHIBITION
Heatherwick Studio: Designing the Extraordinary at the V&A is a must-see. He is a contemporary Leonardo da Vinci.



THE DUO
The film **Eames: The Architect and the Painter** is in cinemas from August 3. Charles and Ray Eames, although American not British, are my design heroes.



THE TALENT
Laura Amstein developed these beautiful bags in her final year at the Royal College of Art, and was an instant success. The ladies in my life adore her work.



THE ART
My wife recently designed an "artisan retreat" at the Chelsea Flower Show, and **Jake Dyson's** task light was much admired. It is elegant and simple.



THE SOFA
I'm giving London a miss for the Olympics but I'll be watching from home on a big, comfy sofa - pretty much like the William, designed by Londoner **Damian Williamson**.