

The Square

01

Spring 2018

Welcome to this Pimlico based publication featuring local and more exotic inspiration

STEAM LUXURY

Steam powered luxury train journeys from Victoria evoke the golden age of travel

ART & CULTURE

Upcoming exhibitions and events previewed

GIN TIME

Know how to create a beautifully blended cocktail?



Welcome

Welcome to this first issue of our new Magazine.

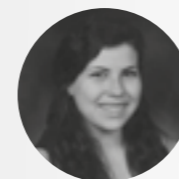
Home to some of London's most prominent historical figures including Sir Winston Churchill, Joseph Conrad and Laura Ashley, Pimlico's history can be seen in its 19th-century homes and Regency architecture. It could hardly be more central, with Westminster Abbey for a parish church and Tate Britain for the local museum. But Pimlico's bountiful market stalls, cosy local pubs, and bustling businesses are often overlooked.

It needed this Magazine.

Contributors:



Neil Miller-Chalk
Editorial Director



Rachael Forsyth
Editor
From newsletters to novels, Rachael has been a freelance editor since graduating from Winchester University with a BA in English.



Bryan McMorran
Feature Writer
A salesman, consultant and connoisseur, Bryan has been involved in buying and selling some of the world's finest cars for over 25 years.



Mathew Broughton
Feature Writer
Mat is a freelance travel writer who has written for a variety of hotels, alongside pieces covering international destinations.



Laura Wilson
Photographer
Laura is a Brighton based lifestyle, food, travel and commercial photographer.

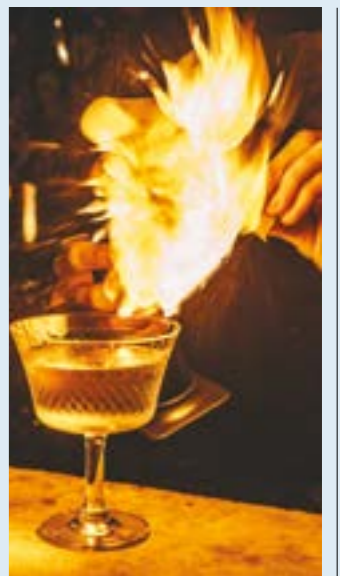
Contents

Inside this issue of The Square



06

Pimlico local news and events round up.



36

You may be an eager gin and tonic drinker, but do you know how to create a beautifully blended cocktail?

24

Be transported to a more glamorous age of travel - step back in time and experience luxury train travel as it was and should be.



39

Let your imagination drift off for a moment, and picture a Ferrari 250 Lusso, or a Jaguar E-Type Roadster.

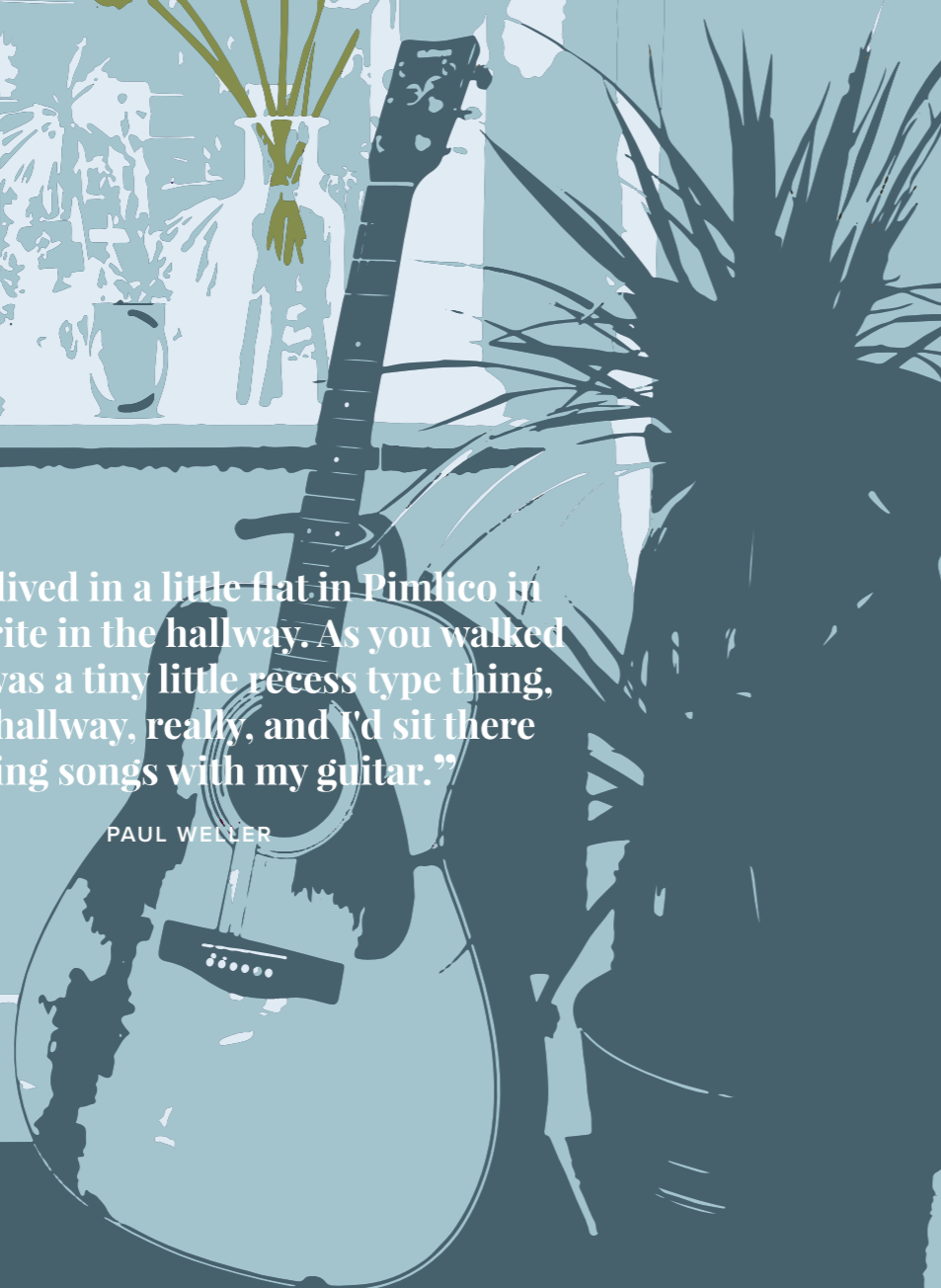


16

A chocolatier in Pimlico. Amelia Rope is a prime example of what can happen when you put everything into your business - especially your name.

“When I lived in a little flat in Pimlico in 1981, I’d write in the hallway. As you walked in, there was a tiny little recess type thing, hardly a hallway, really, and I’d sit there writing songs with my guitar.”

PAUL WELLER





THE PIMLICO ROAD FARMERS' MARKET

The Pimlico Road Farmers' Market takes place every Saturday at Orange Square 9am-1pm.

It's one of the most leafy and pleasant market locations in London. Around 25-30 stalls are packed into the square bringing you everything

you could want. From the freshest fish and shellfish to local honey, organic and biodynamic vegetables, free range and organic meat and poultry, delicious mushrooms and pies, flowers and plants, and cakes and breads made in London.

Nowhere else in the Capital can you find such a welcoming sense of community, allowing for visitors and locals to meander amongst seasonal produce at its best.



FUN, FEISTY & passionate

Flamenco dancing draws on Jewish tradition, Moorish culture and Spanish gipsy heritage.

Enrol for the March Flamenco Beginners course at Pimlico Academy, to pick up the essential foot/heel rhythms, posture, strength and body control.

TAKE THE TATE TO TATE

Travel with ease between the Tate Modern and Tate Britain galleries along the Thames. Soak in the scenery as the Tate Boat travels between Bankside, Embankment, Millbank and St George Wharf piers. It operates between Tate Britain and Tate Modern every 40 minutes during gallery opening times. Children under 5 travel for free, Travelcard holder for £5.



EXHIBITION
All Too Human: Tate Britain



A landmark exhibition at Tate Britain from February will celebrate how artists have captured the intense experience of life in paint. All Too Human: Bacon, Freud and a Century of Painting Life will showcase around 100 works by some of the most celebrated modern British artists, with Lucian Freud and Francis Bacon at its heart.

It will reveal how their art captures personal and immediate experiences and events, distilling raw sensations through their use of paint, as Freud said: 'I want the paint to work as flesh does'. Bringing together major works by Walter Sickert, Stanley Spencer, Michael Andrews, Frank Auerbach, Kitaj, Leon Kossoff, Paula Rego, Jenny Saville, Lynette Yiadom-Boakye and many others, this exhibition will make poignant connections across generations of artists and tell an expanded story of figurative painting in the 20th century of isolated figures.

See the full article, and preview some of the artists work on **pages 34 to 38.**

ABOVE: Michael Andrews, 1928-1995 Colony Room I 1962 Oil paint on board 1219 x 1827 mm Pallant House Gallery, Chichester (Wilson Gift through The Art Fund, 2006) ©The Estate of Michael Andrews, courtesy of James Hyman Gallery, London.

WORLD BOOK DAY

Thursday 1 March 2018

There are many ways to celebrate this years' event. Pimlico boasts an impressive Library (*Lupus Street, SW1V 3AT*) home to hundreds of stories just waiting to be read – you could even become a member and take them home with you.

If you are a member already, how about trying a different genre? From Sci-Fi to the classics, from biographies to romance, there are loads of worlds to explore.

Alternatively, make an investment at Classic Rare Books (*61 Cambridge Street*) a specialist bookshop selling antiquarian leather bound and rare volumes. They specialise in selling to private and corporate clients as well as trade book dealers worldwide.



CATCH A BAND

Enjoy music from 4.30pm to 7.30pm on Sundays in CASK Pub & Kitchen on Charlwood Street – specifically acoustic bluegrass and traditional Irish music.

That's ample excuse to sample this sprawling venue's Sunday roasts or burgers which blend aged rib and rump beef from Pimlico's own Freeman's Butchers (located on *Lupus Street*), a Royal Warrant holder by appointment to Her Majesty The Queen no less. CASK's main speciality though, is beer. Beside a constantly-rotating guest ale selection, it has 15 kegs from global brewers and an extensive selection of bottled craft beer. Run by local Pimlican, Martin Hayes, the place aspires to a high-quality 21st century update to the staple British pub.

6 Charlwood Street, SW1V 2EE





Afternoon Tea
From Victoria

Telephone 0845 077 2222 or visit www.belmond.com

Step into the adventures of Paddington on Belmond British Pullman for an afternoon tea featuring sweet treats and marmalade sandwiches – of course! Departure is on 7 April 2018. See **page 24** for full details.



MESSIAH ON GOOD FRIDAY

The Royal Choral Society has performed Handel's Messiah on Good Friday afternoon at the Royal Albert Hall every year since 1876. This annual concert is one of London's great Easter traditions and the perfect way to spend Good Friday afternoon. For the 2018 performance of Great Britain's favourite choral masterpiece, the choir will be accompanied by the Royal Philharmonic Orchestra.

Friday 30 March 2018
www.royalalberthall.com

LOVE, FAME, TRAGEDY.
Picasso 1932

The first ever solo Pablo Picasso exhibition will take place at Tate Modern.

1932 was an intensely creative period in the life of Picasso, the 20th century's most influential artist. This exhibition will bring you face-to-face with more than 100 paintings, sculptures and drawings, mixed with

family photographs and rare glimpses into his personal life. Three of his extraordinary paintings featuring his lover Marie-Thérèse Walter are shown together for the first time since they were created, over a period of just five days in March 1932.

At the Tate Modern.
8 March – 9 September 2018



Valentines Day
For your romantic season...



LOCAL FLORISTS

Pimlico Flowers 72 Eccleston Square London, SW1V 1PJ.
Tel: 020 7828 6430

Dovers Flowers 23 Churton St, Pimlico, London SW1V 2LY.
Tel: 020 7834 8784

Patricia's 58-60 Lupus St, Pimlico, London SW1V 3EE.
Tel: 020 7834 1411

Memento Flowers 91 Tachbrook St, Pimlico, SW1V 2QA
Tel: 020 7821 9700



MOROCCO IN PIMLICO - SPA TREAT

This February The Spa in Dolphin Square is offering a 'Sweet Valentine' package which includes use of The Salt Infuse Steam, our Moroccan Inspired Hammam & Rhassoul Ritual with a touch of rose petals. To finish your sweet experience, you will be served a Citrus Fresh tea with Valentine inspired cupcakes.

The Spa's mineral rich water is drawn from the only working Artesian well in the City of Westminster. Coming directly from the water table this makes a significant contribution to Spa treatments and Dolphin Square's & Westminster's environmental status. The Spa Mentors are on hand to answer your questions from the moment you enquire, make a booking and greet on arrival.

Find out more or make a booking by calling **020 7798 6767** or email thespa@dolphinsquare.co.uk

A SPRINGTIME VISIT TO KEW GARDENS

Kew is London's largest UNESCO World Heritage site, offering unique landscapes and iconic architecture from every stage of the Garden's history. Springtime is a perfect time to see Kew Garden's collection of plants, the largest and most diverse in the world, growing outside in the gardens and inside the glasshouses.

Getting to Kew Gardens:

By tube Kew Gardens station (500m to Victoria Gate)

By train Kew Bridge station (800m to Elizabeth Gate)

By bus 65 stops at Victoria and Lion Gate

By bike racks are available at all gates

The iconic 'Palm House' is a Victorian glasshouse that supports rainforest climate, housing a unique collection of tropical plants from some of the most threatened environments in the world. Another highlight of your visit should be The Hive. A unique multi-sensory experience designed to highlight the extraordinary life of bees. A feat of British engineering, it stands 17 metres tall, set in a wildflower meadow.

Opening times and events visit: www.kew.org



WINNIE-THE-POOH:
Exploring a Classic

Victoria and Albert Museum
www.vam.ac.uk



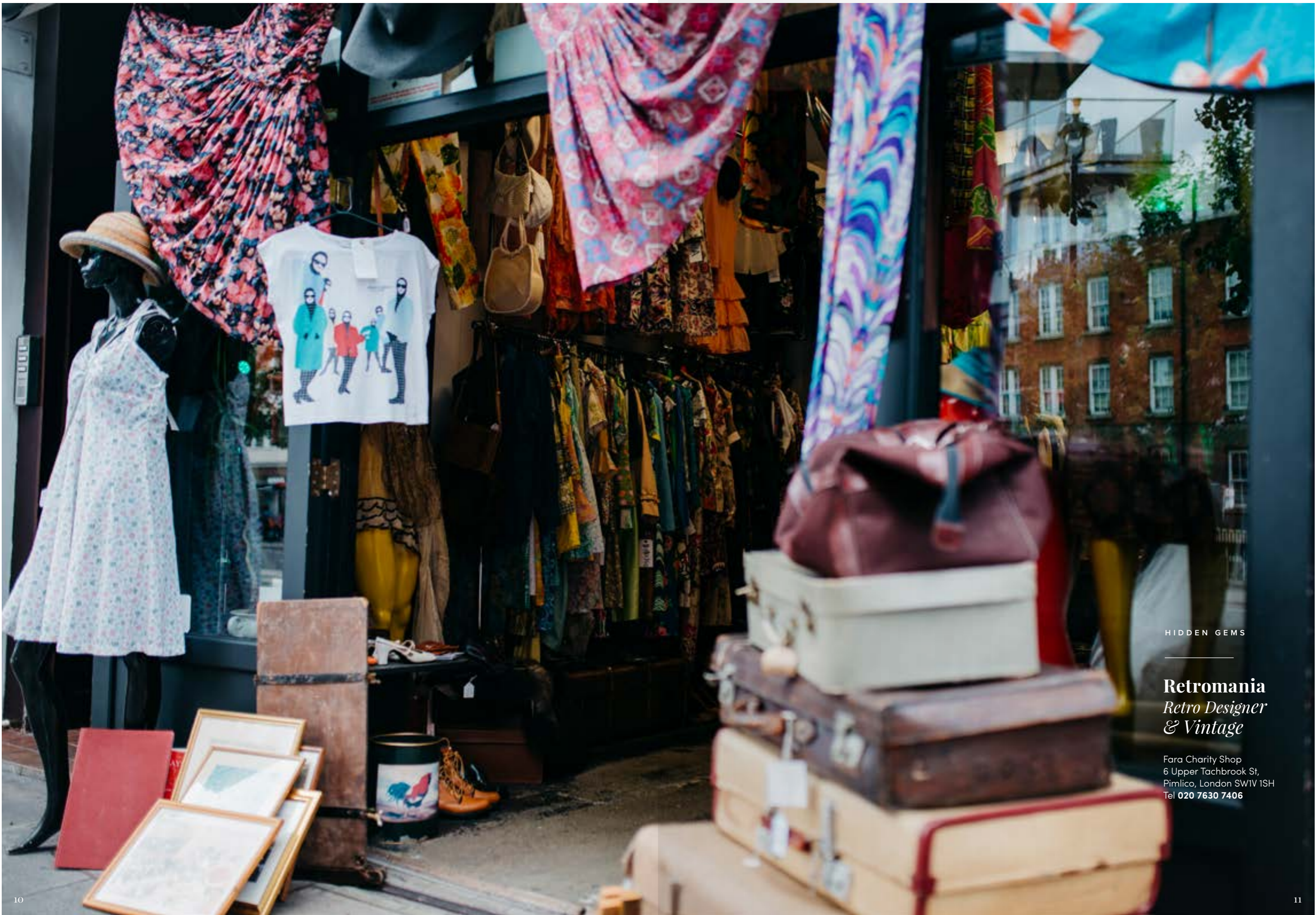
There's always Pooh and Mr. Whatever I do, he wants to do.

Experience the timeless and universal appeal of this much-loved bear and discover the story behind the creative partnership of A.A. Milne and E.H. Shepard, brought to life through sketches, letters, photographs, cartoons, ceramics and fashion. The V&A is the world's leading museum of art and design, housing a permanent collection of over 2.3 million objects that span over 5,000 years of human creativity.

On now until 8 April 2018

Daily: 10.00 – 17.30
Last ticketed entry 16.00

Friday: 10.00 – 21.30
Last ticketed entry 20.00



HIDDEN GEMS

Retromania
*Retro Designer
& Vintage*

Fara Charity Shop
6 Upper Tachbrook St,
Pimlico, London SW1V 1SH
Tel 020 7630 7406



Life of a *chocolatier* in Pimlico

Award-winning chocolatier Amelia Rope talks about the perils and pleasures of creating her own business, her decision to change to Colombian chocolate, and Pimlico as a backdrop to her business.

"If you push your business every day because your name is on it, you push the quality, you push the taste, and you push the deliverance of it, because that's my name, that's my persona out there being judged."

Independent and happiest when doing her own thing, Amelia always knew she would run a business. With a background in nutrition, herbal medicine, aromatherapy, cancer care and the NHS, Amelia was propelled into chocolate making after a five-day course in Valhrona where her high flavour standards were established. Though people doubted her chances of success, Amelia quit her full-time job and poured all of her energy into launching a successful business.

For the initial three years she made every truffle and crystallised flora herself, even interrupting her own Christmas to hand deliver an order to a customer in Birmingham. Her break into the industry came with a commission from the late Pat Reeves, Co-founder of sofa.com, for 1000 chocolate bars and six weeks to put them together.

Selfridges was her first retailer, and it was after this that Amelia began using her aromatherapy background to influence her flavour ranges, "Someone actually said to me, if I had sat down and created a business plan I would never ever have done it."



From her first exquisitely delicate, crystallised flora creations, to her skilfully flavoured chocolate bars, Amelia's products ooze luxury, "I like blending, I like creating. I'm not a chocolatier as such; I'm more about flavour and taste."

It's clear that Amelia's unwavering determination has been the driving force behind her success and earned her the title of 2017 Luxury Entrepreneur of the Year. But pushing her business doesn't just mean chasing more sales; Amelia strives to make a difference and places sustainability at the heart of everything she does.

Amelia's decision to use Colombian chocolate meant changing her flavour, and forfeiting awards for her original recipe, "For me it's much more symbiotic. It's the country, it's the people, it's the people who are involved in it, and it's not just that plant. The energy in Colombia is so welcoming. Everybody is warm. It's a country which has just got into my DNA."

2017 was a year of achievement Amelia, but she is already looking to the future: "Having switched my chocolate to Colombians, I'm interested in the movement towards encouraging cocaine farmers to grow cocoa. I make all my recipes at home in my kitchen and I've just made a couple I want to roll out next year. I'm hopefully going to move back into small chocolate forms."

Although the road to success has hardly been easy for Amelia it has only inspired her to help make things easier for others, "I really encourage this whole momentum of women in business I would love to be more of an ambassador for it. I want to bring over Colombian producers who are making fantastic bars, because they sort of need an umbrella."

With Victoria Station within walking distance, the embankment, the river, and the rest of London within easy reach, Pimlico is an ideal place to set up a business, "it's central it's very nimble to get around You've got Victoria station nearby, which is another

plus point because if I have to go on a trip it's very easy to get on the Gatwick express."

As Amelia talked about some of her favourite spots it was easy to see why she has such an affection for the area, "There are brilliant little Italian deli's around Warwick Way and Tachbrook street. Dover's florists are superb. There's a very good Italian in that street too, Cacio e Pepe. Khallouk & Taylor for coffee in Moreton Street; he does very good coffee and in the summer he opens the business up. There are great churches. There's a very good car boot sale, people flood in from miles around on a Sunday, which is at Pimlico academy, and I gather they do things like salsa dancing."

But it's the atmosphere and vibe of Pimlico that Amelia really connects with and where she feels most at home, "It's just really eclectic; it's a mix of ages, nationalities, of cultures. It has a very strong community feel. It's just like our little hub. It's somewhere I appreciate a lot."



Products created by Amelia
Passion Fruit Chocolate kernels 75% Dark Cocoa
Photography - Mary Wadsworth

You can get your hands on Amelia's chocolate at:
www.ameliarope.com





A punter in Cambridge Street Kitchen

Pimlico's coolest hotel is the Artist's Residence, a chic town house nestled in the back streets of Victoria station. Below its ten shabby chic bedrooms sits the small, brightly bedecked Cambridge Street Kitchen restaurant.



Championing British producers wherever possible, it's open all day, but dinners are best. Changing monthly, seasonal menus include treats like duck breast beside pickled cherries and gingerbread, or sirloin steak served with broccoli, malted shiitake mushrooms and smoked anchovy butter – plus a suggested wine or ale pairing in every case.



Before all that though, begin by sipping a Passport to Pimlico (gin, hibiscus, elderflower, dry Curacao, sparkling wine) in the low-lit, speakeasy-style Clarendon Cocktail Cellar, and enquire about this building's history as a Victorian pub of, well, dubious character.





Battersea Park

Run or, Sunday stroll

A gentle promenade on a Sunday or a midweek evening run - this is a good circuit to view Pimlico from the far side of the Thames

DISTANCE: 3.60 miles

TIME: 50 minute run / 80 minute stroll

Benefits of Yoga

Focussing on strength, flexibility and breathing to boost physical and mental well-being.

Hatha Yoga is an umbrella term for most types of popularly practised yoga. It is designed to balance the mind, body and spirit through physical poses or 'Asana', breathing techniques or 'Pranayama', and meditation. By creating this union within your body, Hatha Yoga aims to fill it with life force. It is commonly believed that the regular practise

of Hatha Yoga could give 'steadiness, health and lightness of body.'

Hatha Yoga is suitable for beginners who may have a limited range of motion, as well as those who are more experienced - take each pose at your own pace and find what works for you.

VIRABHADRASANA II (Warrior 2)

A powerful posture - engaging the muscles throughout the legs. The front knee is bent with the front thigh running parallel to the floor, the back leg is straight, strong and active in order to distribute the weight of the body evenly. The eye focus, drishti, is on the middle finger of the leading hand.



VRKSASANA (Tree Pose)

The roots are based through the standing leg and foot. The sole of the other foot is placed on the inside of the thigh or calf muscle so as to open the hip, with the lifted knee pointing out to the side. The hands can be brought into a prayer position in the front of the chest, or can be lifted over head to create space between the shoulders.



SIRSASANA (Headstand)

The fingers are interlaced and the elbows are placed on the floor a shoulder width apart. The forearms and elbows are pressed into the floor, and the very top of the head is placed just inside of the hands, as the body is lifted and stacked from the top of the head to the soles of the feet. There should be no pressure in the neck at all. This is a powerful inversion that needs to be approached with care.



Steam-hauled Afternoon Tea

British Pullman offers passengers the chance to step back in time and experience luxury train travel as it was—and should be.

With its original, fully restored 1920s Art Deco carriages and exceptional service delivered by liveried stewards, the train evokes the golden age of travel, when passengers were elegantly dressed and had the time to enjoy their journey.

In order to ensure the train and its staff continue to deliver an authentic British experience, there is an ongoing campaign to maintain and develop relationships with British suppliers of food and crockery, and also with craftsmen and women who maintain and restore the vintage carriages. Tea comes from the Tregothnan estate, suppliers of England's first and only tea. Afternoon tea features Balfour Brut Rosé wine, produced in the Weald of Kent, home to some of the UK's finest vineyards.





The carefully selected cheeses served on board are also all from British suppliers: Keen's Cheddar, Tuxford & Tebbutt Blue Stilton, Golden Cross goat cheese and Catherine Mead's Cornish Yarg.

Totalling over 203 combined years of service, it is the crew aboard the train who truly add to the experience. With some beginning their early careers at the original Pullman Training School, they are able to share stories, such as the Queen Mother's favourite carriage and the details of the ornate marquetry.

Belmond British Pullman, one of Belmond's eight luxury rail experiences, travels from London Victoria Station throughout the year, offering unique day journeys to iconic locations across the country. In addition, the train also hosts a series of pop-up culinary events with some of the country's top celebrity chefs.

“ Sit back in ornate surroundings and admire the intricate marquetry and woven brass luggage racks, gleaming crystal and silken lampshades...”

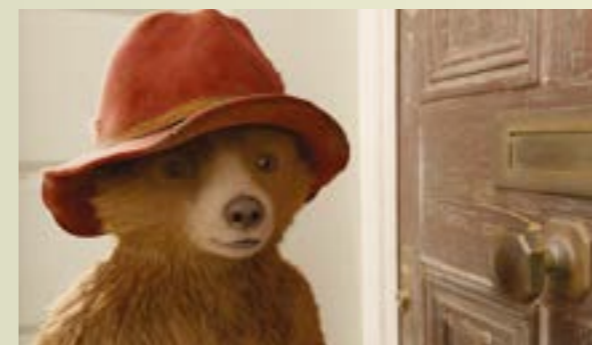
To celebrate the release of Paddington Bear 2, Belmond has just announced steam-hauled Paddington Afternoon Tea journeys aboard Belmond British Pullman, the very train that plays a starring

role in the sequel of the firm family favourite. Belmond British Pullman is set to be hauled by steam locomotive Tornado, which stars alongside the train in the movie, taking families on a Paddington-inspired Afternoon Tea adventure.

Fit for small and grown up bears, the Afternoon Tea menu includes many sweet treats and marmalade sandwiches. Paddington-inspired activities are also available on board for families throughout the journey to fully immerse themselves in the world of Paddington.

Including welcome drinks for all, afternoon tea, entertainment for the family, and tea and coffee, this new journey brings the magic of Paddington's adventures to London's favourite train.

ALL ABOARD THE BELMOND BRITISH PULLMAN FOR A PADDINGTON THEMED AFTERNOON TEA



Step into the adventures of Paddington on Belmond British Pullman for afternoon tea featuring various sweet treats including marmalade sandwiches – of course!

The Paddington-themed journey also involves exciting activities inspired by this beloved bear. Departure on 7 April 2018. Prices start from £800 for a family of four, based on two adults and two children.

Get in touch and book now, by calling **0845 077 2222** or visit www.belmond.com



BEAT THOSE WINTER BLUES

Pimlico to **Palm Jumeirah**

The dreaded 'winter blues' return every year, usually just after the excitement and joy of the Christmas period. Symptoms include: an increase in tea consumption, grumbling with colleagues (when they haven't been struck by the latest round of 'the bug') and becoming increasingly frustrated with unfolding partially-broken umbrellas.

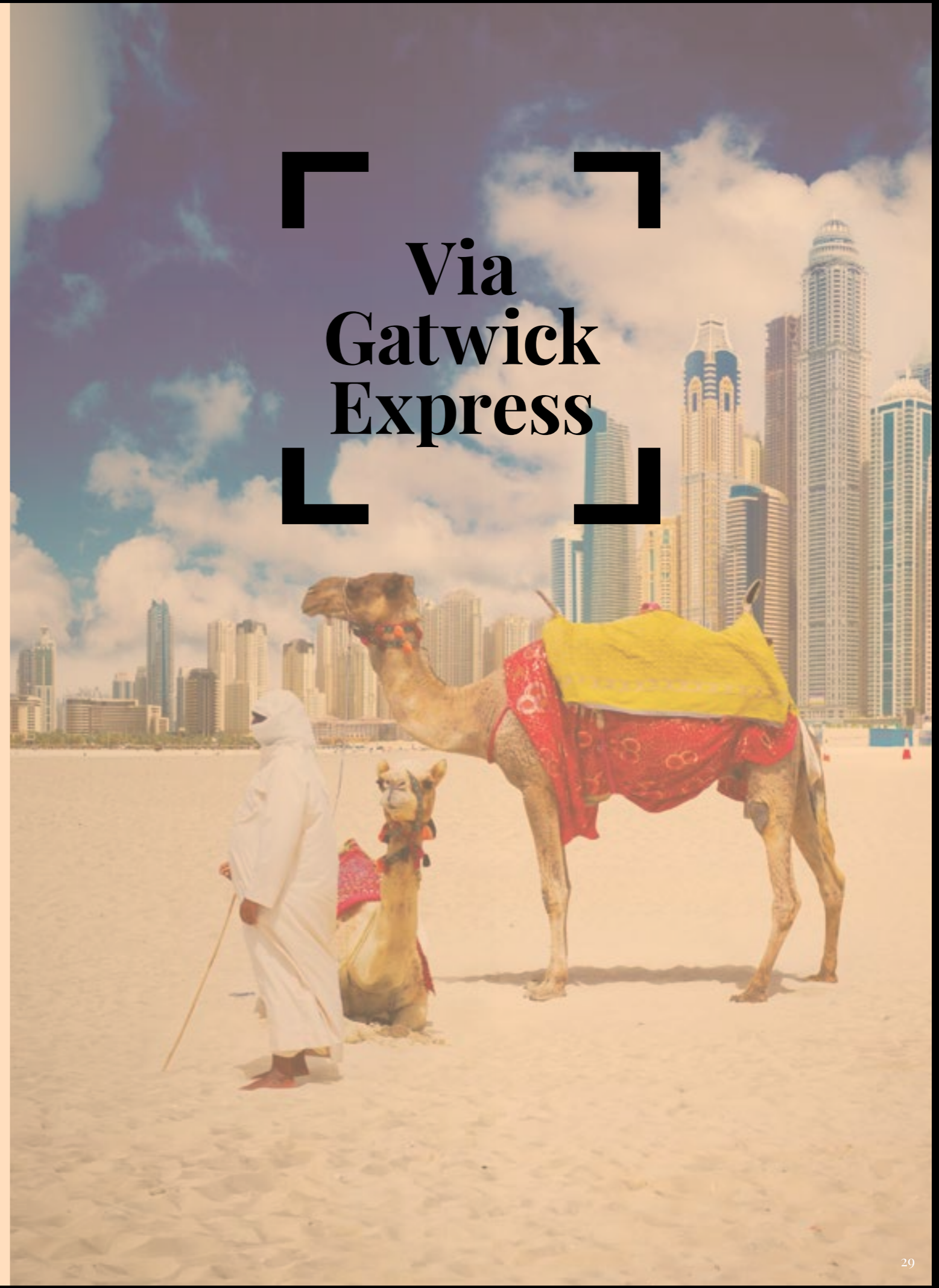
Thankfully Pimlico has prime access to the Gatwick Express, the rail service which can quickly whisk you to exotic locations where warmth doesn't require twenty layers and a bucket-load of soup. One such location is the jewel city of the United Arab Emirates: Dubai.

It is no secret that Dubai has one of the most spectacular cityscapes around with a plethora of

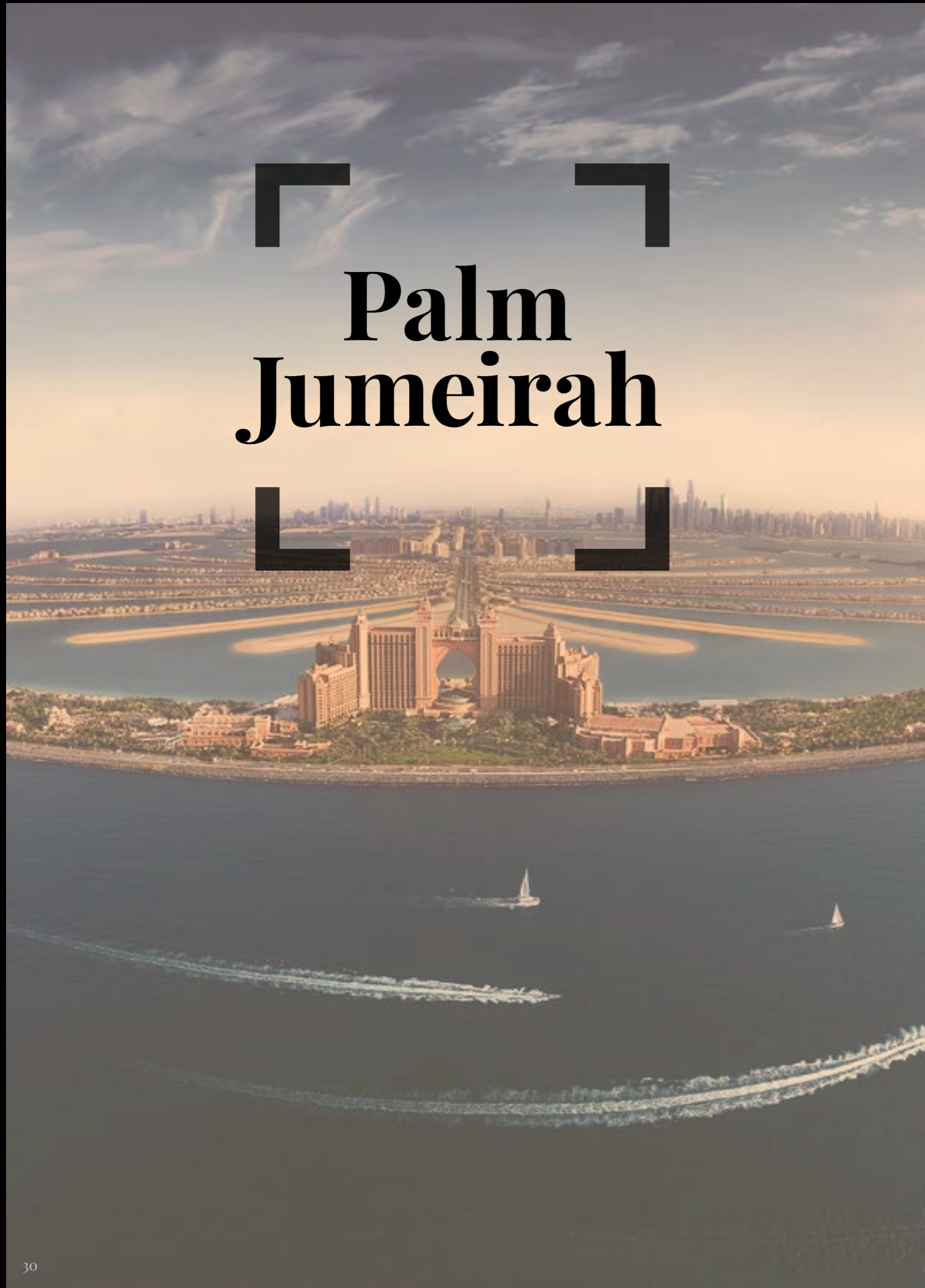
skyscrapers and innovative architectural masterpieces such as the Palm Jumeirah, soon to be joined by two more artificial islands elegantly spreading out from the Arabian Peninsula. One of the finest places to absorb the city views is atop the tallest free-standing structure in the world: the Burj Khalifa; equipped with 360-degree viewing platforms, outdoor terraces, and private lounges. Several restaurants are also interspersed throughout the superstructure, providing one of the ultimate meals with a view one could experience.

Closer to the ground you can discover a wide variety of cuisine, ranging from decadent Michelin Star luxuries to authentic Gulf Khaleeji cafes. Dubai's location lends itself well to fusion dining with inspiration drawn from Asian spice, earthy Middle Eastern flavours, and rich Mediterranean character.

Via Gatwick Express



Palm Jumeirah



The sunset over the dunes fills the sky with a myriad of orange-pink hues before the countless stars of the Milky Way pass into sight.

Many of these establishments boast rooftop terraces perfect for basking in the sunlight with family and friends. By night they are transformed into classy cocktail bars, where the Dubai social scene truly comes alive with the buzz of conversation, gentle beats of tropical house, and heat of the Arabian night - all allowing your stress to melt away.

Though Dubai is mostly known for being a pinnacle example of man-made structure and sophistication, one of the most enjoyable attractions of the area is the vast swathe of rolling desert surrounding the city. Here you can team up with a skilled driver and go dune bashing in a powerful 4x4. Even Formula Rossa the fastest rollercoaster in the world (which can also be found in Dubai) struggles to compete with the thrill of hurtling forwards through sky and sand. If you are of a more sedate disposition you may instead choose to ski amongst the dunes or saunter through the sands atop a hardy camel. You can even spend the night at one of several Bedouin camps nestled in the desert, feasting on Emirati BBQ before kicking back and enjoying the natural spectacles. The sunset over the dunes fills the sky with a myriad of orange-pink hues before the countless stars of the Milky Way pass into sight.



Before returning to the chill of the United Kingdom it is important to address that vital component in curing the winter blues: retail therapy. The opulence of Dubai will certainly fulfil your shopping needs with two huge plazas: The Dubai Shopping Mall and The Mall of the Emirates. Both are equipped with a vast plethora of department stores, cinema complexes and eateries. The latter holds an indoor ski centre, Ski Dubai, with various slopes, giving a flavour of the Alps in the Middle East. A personal favourite here is the penguin encounter, where you can meet one of their friendly (and highly talkative) Gentoo and King penguins.



Whilst a trip to Dubai will certainly cure the worst of the winter blues, you may be struck down once more by this malady upon your return to the frosts of London. However, rest assured you can take solace by ordering some brightly coloured drink in your local bar that is vaguely reminiscent of that expertly-crafted cocktail, which you sipped upon a rooftop bar in the Arabian warmth, all while you plan your next getaway.

Emirates fly regularly from London Gatwick
<https://www.emirates.com/uk/english/>

Gatwick Express from London Victoria every day
<https://www.gatwickexpress.com/>

All too *Human*

Bacon, Freud and a century of painting life 28 February – 27 August 2018.
Tate Britain, open daily 10.00 – 18.00



Colony Room 1962
Michael Andrews, 1928–1995
Pallant House Gallery, Chichester
©The Estate of Michael Andrews, courtesy of James Hyman Gallery, London.

A landmark exhibition at Tate Britain from February will celebrate how artists have captured the intense experience of life in paint. All Too Human: Bacon, Freud and a Century of Painting Life will showcase around 100 works by some of the most celebrated modern British artists, with Lucian Freud and Francis Bacon at its heart. It will reveal how their art captures personal and immediate experiences and events, distilling raw sensations through their

use of paint, as Freud said: 'I want the paint to work as flesh does'. Bringing together major works by Walter Sickert, Stanley Spencer, Michael Andrews, Frank Auerbach, R.B. Kitaj, Leon Kossoff, Paula Rego, Jenny Saville, Lynette Yiadom-Boakye and many others, this exhibition will make poignant connections across generations of artists and tell an expanded story of figurative painting in the 20th century.



10pm Saturday
Lynette
Yiadom-Boakye,
born 1977
Tate
© Lynette
Yiadom-Boakye



Two Saints in a Landscape 1961
F.N. Souza 1924-2002
Acrylic paint on canvas
Tate
© The estate of F.N. Souza



Portrait of Isabel Rawsthorne 1966
Francis Bacon, 1909-1992
Oil paint on canvas. Tate ©
The Estate of Francis Bacon.
All rights reserved. DACS, London

Groups of major and rarely seen works by Lucian Freud and Francis Bacon will give visitors a chance to immerse themselves in the rich sensuality and intimacy of these two modern masters. Key paintings spanning Freud's career will explore his studio as both context and subject of his work and will show how his



Children's Swimming Pool, Autumn Afternoon 1971
Leon Kossoff, born 1926
Tate © Leon Kossoff

unflinchingly honest depictions of models became more sculptural and visceral over time, in works such as Frank Auerbach 1975-6 and *Sleeping by the Lion Carpet* 1996. In contrast to Freud's practice of working from life, the exhibition will look at Bacon's relationship with photographer John Deakin, whose portraits of friends and lovers were often the starting point for Bacon's work, including *Portrait of Isabel Rawsthorne* 1966. Earlier works by Bacon like *Study after Velazquez* 1950 will be shown alongside a sculpture by Giacometti, both artists having explored the enduring presence of isolated figures.



The Artist's Wife and Baby 1937
David Bomberg
Tate: Presented by Dinora Davies-Rees, the artist's step-daughter, and her daughter Juliet Lamont through the Contemporary Art Society 1986 © Tate

Looking to earlier generations, the exhibition will show how this spirit in painting had been pursued by artists like Walter Sickert and Chaim Soutine – key precedents for portraying an intimate, subjective and tangible reality. The teaching of William Coldstream at the Slade School of Fine Art and David Bomberg at the Borough Polytechnic also proved hugely influential. Employing Freud as a fellow tutor, Coldstream encouraged the likes of Michael Andrews and Euan Uglow to fix the visible world on canvas through intense observation, while Bomberg's vision led students like Frank Auerbach, Leon Kossoff and Dorothy Mead to pursue a more tactile, embodied experience of life. This generation's work encompassed a wide variety of subjects, from Auerbach's and Kossoff's enduring fascination with London's streets and public spaces to F.N. Souza's spiritual and symbolic figures, and from Coldstream's and Freud's focus on the body in isolation to Michael Andrews's and R.B. Kitaj's interest in group scenes and storytelling.



Nuit d'Été c.1906
Walter Richard Sickert - 1860-1942
Oil paint on canvas
500 x 400 mm
Private Collection, Ivor Braka Ltd

The exhibition will also shed light on the role of women artists in the traditionally male-dominated field of figurative painting. Paula Rego explores the condition of women in society and the roles they play over the course of their lives, while always referring to autobiographical events, as in *The Family* 1988. Her work underwent a particularly profound change in the late 1980s and 1990s when she returned to working from life. The exhibition will also celebrate a younger generation of painters who continue to pursue the tangible reality of life in their work. Contemporary artists like Cecily Brown, Celia Paul, Jenny Saville and Lynette Yiadom-Boakye work in dialogue with this tradition while also taking the painting of figures in new directions.

Tate Britain, open daily 10.00 – 18.00
28 February – 27 August 2018.

Gin & *Titanic*

Hidden in the heart of Pimlico, in the dark recesses of an old Victorian Pub, lies the Clarendon Cocktail Cellar.

The crowd at the bar is an eclectic mix of locals and Londoners from further afield – making it the perfect place to meet a new face, or catch up with a friend around a cocktail, a glass of wine, or even a craft beer.

With a sordid past, the team have worked to create a diamond in the rough which plays host to a number of exquisite gin cocktails which certainly put on a show.

Though Gin has a simple façade, it has become one of the world's best loved spirits. It derives its most predominant flavour from the juniper berry, but the classic spirit is often infused with various flavours and it lends itself well to these infusions – meaning there really is a gin for everyone.

Warren, Bar Manager at Clarendon Cocktail Cellar, talks us through two of the bars most popular gin based cocktails.

TITANIC COCKTAIL:

**Plymouth Gin,
Dry Vermouth Blend
Hibiscus Syrup
Citrus, Rose & Hibiscus tincture
Soda Water**

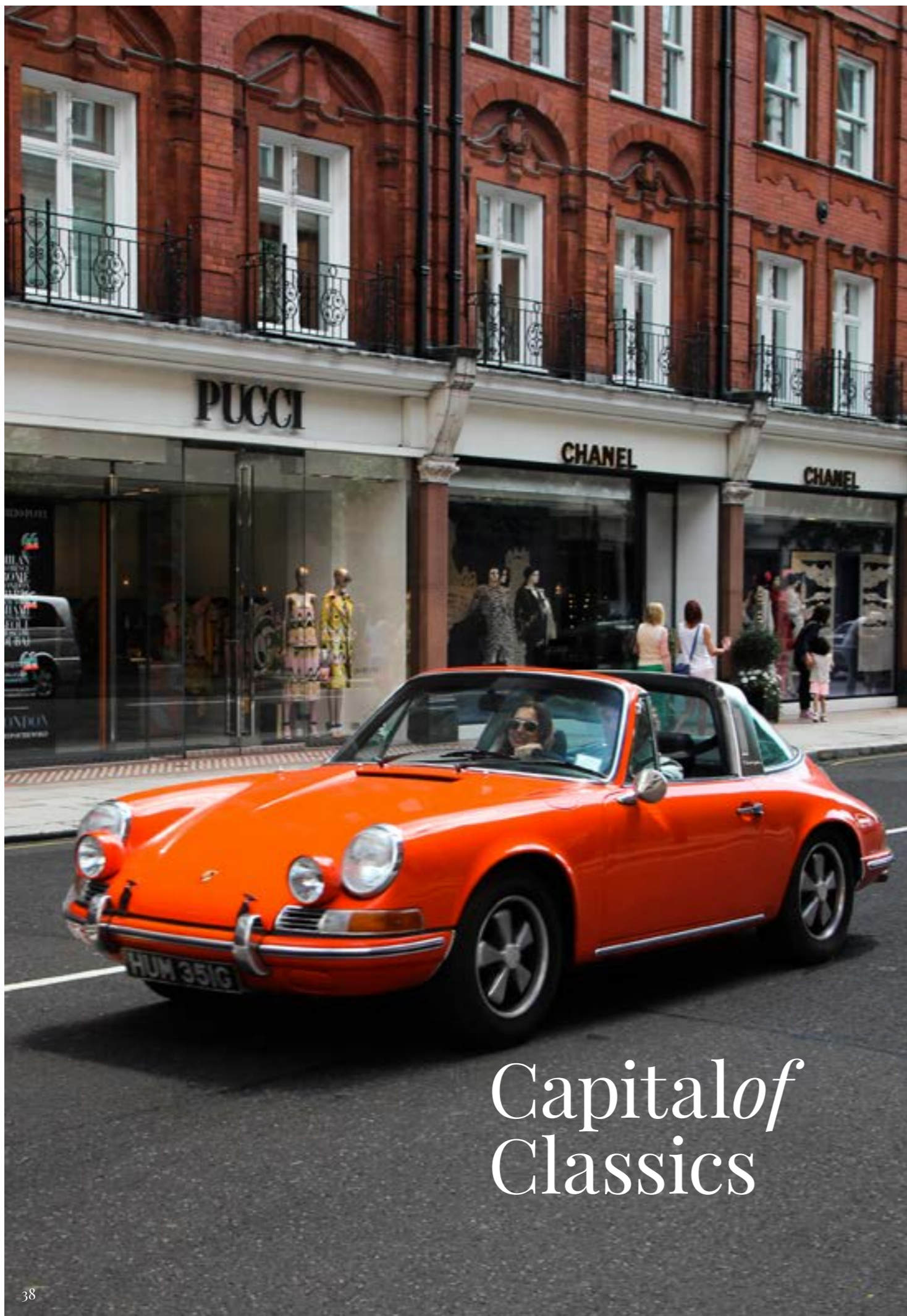
In an ice-filled cocktail shaker, combine, shake slowly until well mixed. Add a single ice cube in a large bowl glass, and pour drink around it.

DRIVING MISS DAISY:

**Quiquiriqui Mezcal
Beefeater Gin
Beetroot Grenadine
Lime
Amaro Montenegro
Teapot Bitters**

Muddle lime and bitters in the bottom of highball glass, add the other ingredients, dress with fresh mint leaves. If you want a stronger drink add a jigger of vodka to create the Mistress Daisy.





Capital of Classics



Let your imagination drift off for a moment, and picture a Ferrari 250 Lusso, or a Jaguar E-Type Roadster. Now, imagine them in their surroundings. A race track, perhaps? Or a winding country road in the rolling hills of England? Probably not the streets of London though.



Yet, despite our stereotypes, London remains one of the most thriving markets for classic cars in the world. Specialist dealers, premium auction houses, and now, at last, world-class concours events are all thriving in and around the city. Of course, the influx of wealth into the capital will naturally bring demand with it, but over the past few years, art, property and antiques have been joined by blue-chip classic cars as investment pieces for the wealthy. And it is growing to become a global hub.

Coys, Bonhams and RM Sothebys are but just a few of the large auction houses whose classic car sales bring the big collectors into the city. With the impact that an international classic car show held in Docklands at Excel and the Concours of Elegance finding its true home at Hampton Court Place to the South West of the city, London can truly rival the best in the world.

The classic car industry brings in around £5.5 billion per annum into the UK economy, with a large part of that emanating around the capital. Dealers such as Fiskens, Hexagon Classics, Abbeyfield Sports & Classics and their contemporaries all boast a global customer base who trust their sound knowledge and advice when it comes to acquiring the very best cars in the world.

As silly as it may sound, the streets of London really do roar to the sound of engines, and long may that continue as the classic market continues its worldwide growth.



Blue Plaque

Focus

His drawings in black ink, influenced by the style of Japanese woodcuts, emphasized the grotesque, the decadent, and the erotic.

In 1892 Beardsley travelled to Paris where he discovered the poster art of Henri de Toulouse-Lautrec, and the Parisian fashion for Japanese prints, both of which would be major influences on his own style. Beardsley's first commission was *Le Morte d'Arthur* by Thomas Malory (1893), which he illustrated for the publishing house J. M. Dent and Company.

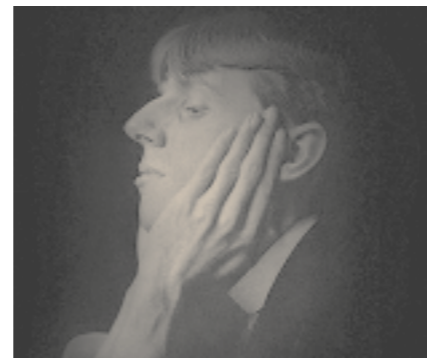
His six years of major creative output can be divided into several periods, identified by the form of his signature. In the early period his work is mostly unsigned. During 1891 and 1892 he progressed to using his initials, A.V.B. In mid-1892, the period of *Le Morte d'Arthur* and *The Bon Mots* he used a Japanese-influenced mark which became progressively more graceful, sometimes accompanied by A.B. in block capitals. He co-founded *The*



Yellow Book with American writer Henry Harland, and for the first four editions he served as Art Editor and produced the cover designs and many illustrations for the magazine. He was also closely aligned with Aestheticism, the British counterpart of Decadence and Symbolism. Most of his images are done in ink, and feature large dark areas contrasted with large blank ones, and areas of fine detail contrasted with areas with none at all.



Aubrey Beardsley residence at 114 Cambridge Street, Westminster, SW1, London



Private life

Beardsley was a public as well as private eccentric. He said, "I have one aim- the grotesque. If I am not grotesque I am nothing." Wilde said he had "a face like a silver hatchet, and grass green hair." Beardsley was meticulous about his attire: dove-grey suits, hats, ties, yellow gloves. He would appear at his publisher's in a morning coat and patent leather pumps.



Dolphin
Square

LONDON SW1

www.dolphinsquare.co.uk | Tel: +44 (0)20 7834 3800