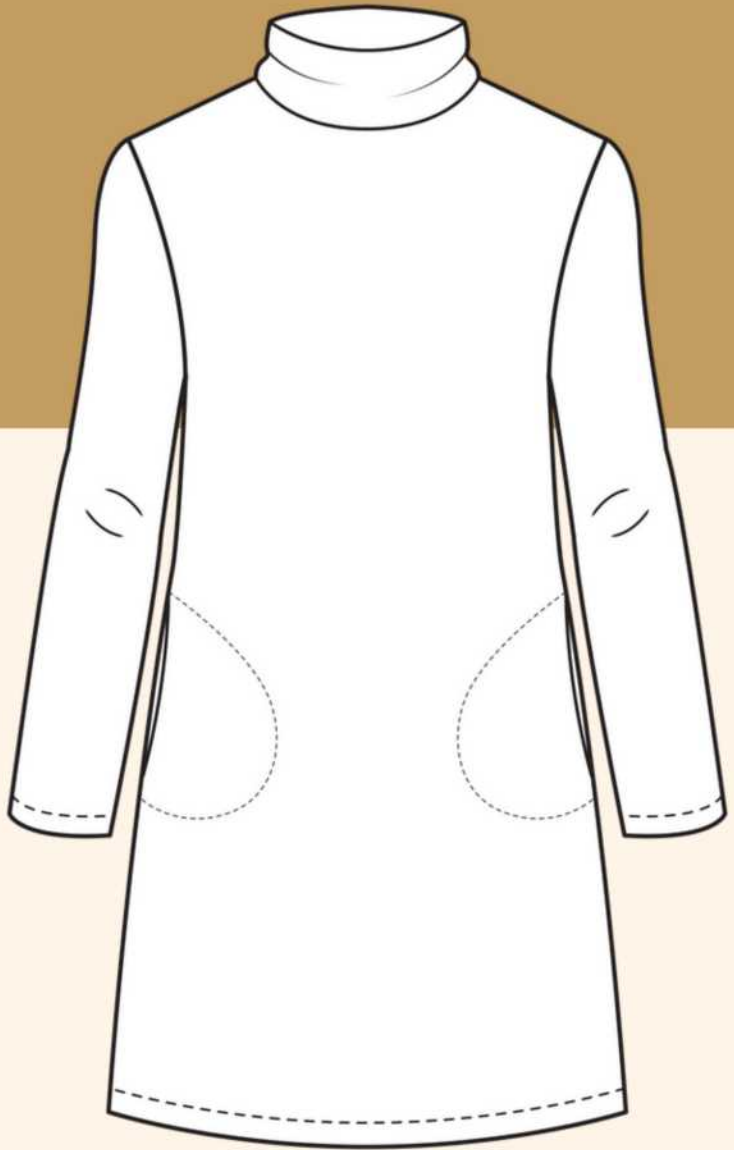


# SWEATER DRESS



*Madam Sew*

## STYLE DETAILS

# Description

---

Cozy up in this midi sweater-dress and move easily from work to weekend. Featuring a relaxed silhouette with a high collar and side pockets, this long-sleeve midi dress is the ultimate piece for transitional wear.

## *An important consideration*

This pattern is licensed under a copyright agreement and belongs exclusively to Madam Sew. Our pattern may be used for personal use only and cannot be shared with third parties, nor can they be published online for public access. As long as the patterns are solely used in a manufacturing setting and not shared with individuals, Madam Sew Patterns may be used for commercial purposes to sew custom-made garments

## OVERVIEW

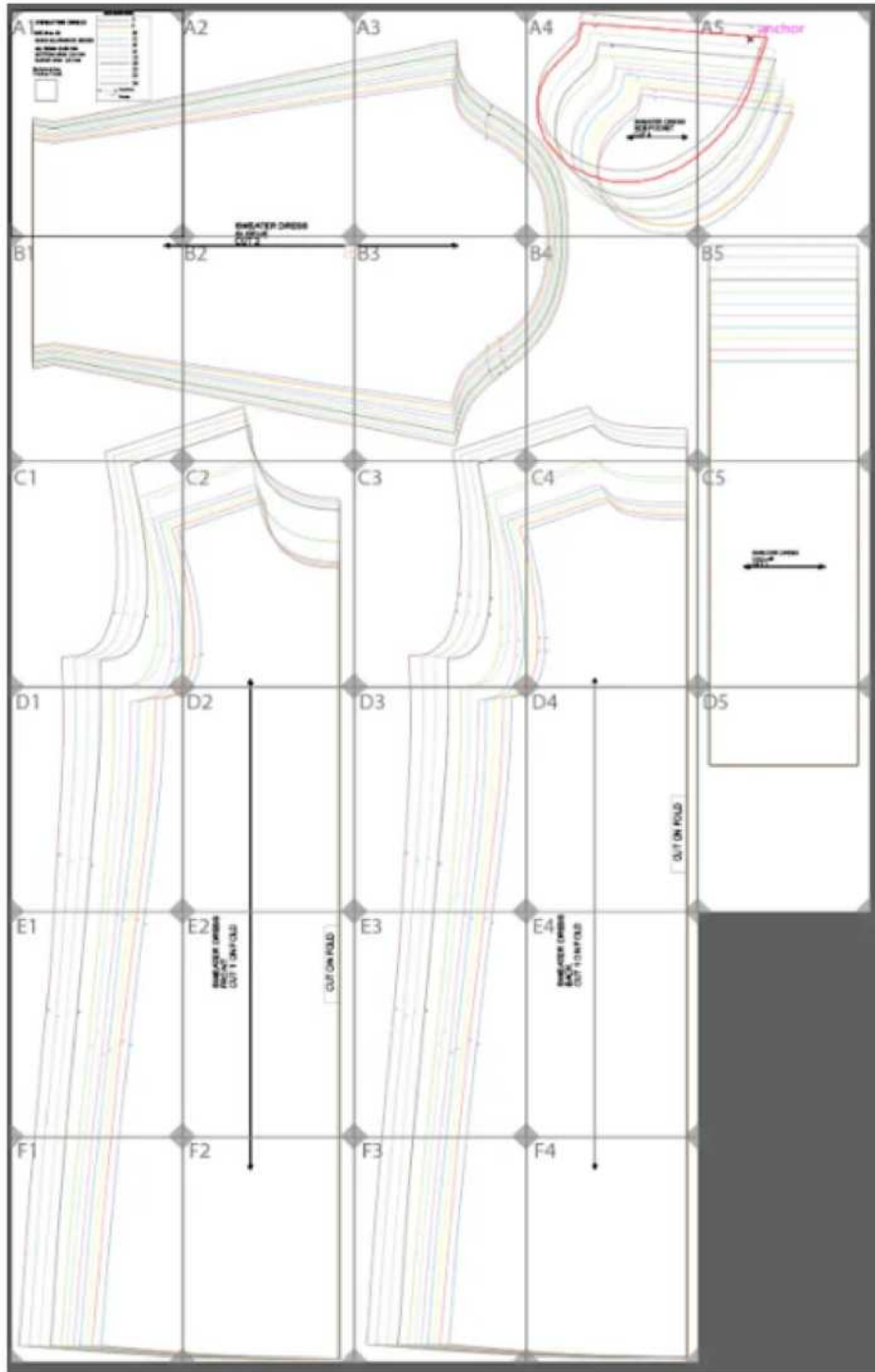
# Pattern Flats

---



# OVERVIEW

# Print Outs



OVERVIEW

# Outfit of the day

---



## OVERVIEW

# Tools & Supplies

---

### Sewing Level

Beginner

### Recommended Fabrics

To sew this sweater dress, choose a sweater knit fabric with the following properties: medium weight, soft, opaque, with a good drape, stretchy or low-stretch.

This garment looks best with: a fleece or terry backed jersey, a medium/heavy rib knit, a ponte di roma, a french terry or a boucle sweater knit.

### Equipment

- Sewing Machine
- Optional: Serger / Overlocking Machine
- Scissors
- Pins/ Sewing Clips
- Iron and Ironing Board
- Thread that matches your fabric

### Seam Allowance

A  $\frac{3}{8}$  inch (or 0.85 cm) seam allowance is included on all seams except for the bottom and the sleeve hem. For the bottom and the sleeve hem the seam allowance is 1 inch (2.5 cm)

### Note on Fabric Requirements

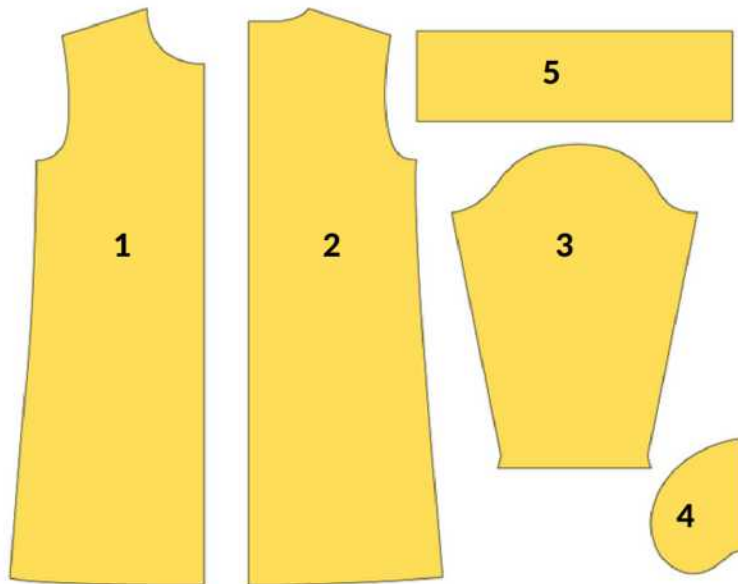
Please note that the fabric requirements apply to fabrics with a width of 60 inches (150 cm). It might be necessary to redo the pattern placement for fabrics of different widths and designs (striped, plaid etc). You can avoid any last-minute trips to the store if you plan ahead and buy enough fabric for your project.

## OVERVIEW

# Fabric requirements

**Fabric Requirements** These measurements are for fabrics with 60 inches width.

	Size										
	6	8	10	12	14	16	18	20	22	24	26
Fabric (yards)	1 $\frac{7}{8}$	1 $\frac{7}{8}$	1 $\frac{7}{8}$	1 $\frac{7}{8}$	2	2	2	2	2	2 $\frac{1}{8}$	2 $\frac{1}{8}$



### Sweater Dress Pieces

1. Front Dress - cut 1x - fabric on fold
2. Back Dress - cut 1x - fabric on fold
3. Sleeve - cut 2x
4. Pocket - cut 4x
5. Collar - cut 1x



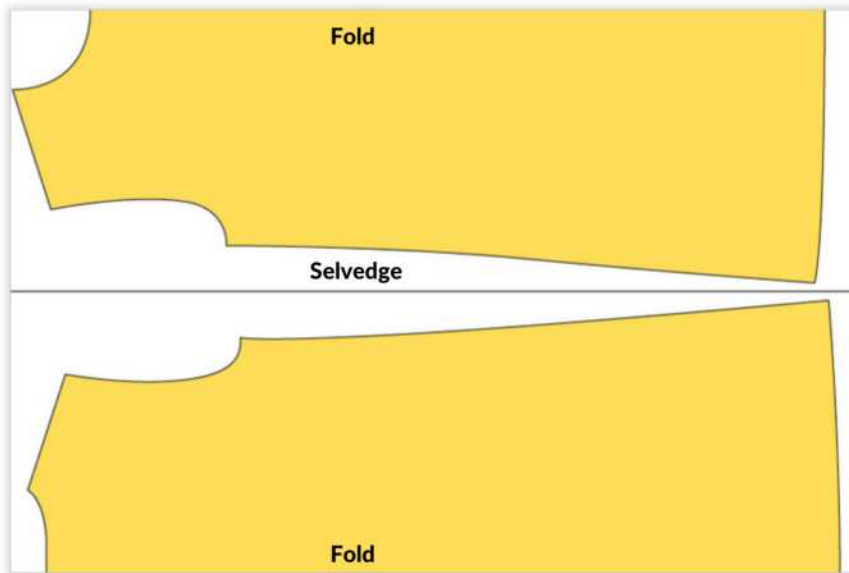
Important! Before cutting, check the shrinkage of your chosen fabric. To do this, steam iron the raw material at its maximum heat recommendation. This will ensure that your finished garment will remain true to its sewn size and won't shrink after first washing. The best way to account for any potential shrinkage is to buy 5% more than your project requires.

## OVERVIEW

# Fabric cutting layout

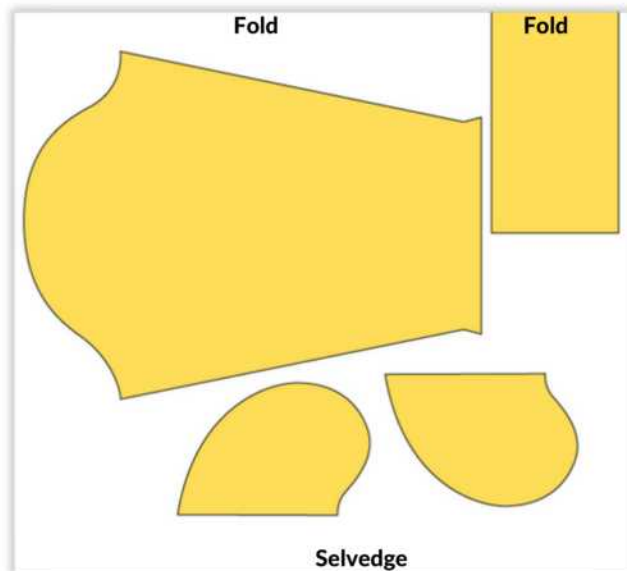
**Main Fabric, 60 inches wide, layout for a non-directional print.**

Fold the fabric like a window so you get 2 folds, the selvedge should be touching in the middle. Position pattern piece 1 and 2 on each fold.



Fold the remaining fabric in half to copy pattern pieces 3, 4 and 5.

In this layout the collar piece (5) is also drawn on the fold to save fabric. Fold or cut this pattern piece in half.





## DRESS PATTERN

# Getting Started

---

### 1. FIND YOUR SIZE

Find the right size by using the size chart. **Be sure to use your body measurements to find correct sized pattern pieces to cut out, not your dress size.** Choosing the larger size is the best option if you are between sizes.

### 2. ASSEMBLING YOUR PATTERN

A PDF file containing the pattern is attached to these instructions. On the first page of your pattern, there is a 1"x1" test square. Ensure the pattern is the correct size by measuring the square with a ruler. After you've taped together the pieces, cut out the design according to the pattern size, matching the colors/letters/numbers.

### 3. GRAINLINE

These arrows on your pattern pieces indicate your grainline, which you should align with the grain of your fabric prior to cutting.

Are you unfamiliar with grainline or grain? This is what you need to know. When fabric is made it is woven with threads that go in two different directions. Lengthwise, which spans the cut edges and crosswise, which spans the selvage edges (the selvage is the band of fabric that runs up either side). The lengthwise direction is the grain of your fabric and what you use to line up your grainline.



### 4. CUT THE FABRIC

Cut the fabric on fold in accordance with the pattern layout. Now that you've got your pattern pieces, be sure to transfer all pattern markings and notches onto the fabric.

### 5. SEAM ALLOWANCE

Seam allowance is  $\frac{3}{8}$  inch (0.85 cm) unless otherwise specified. Size issues can occur if you use the incorrect seam allowance. There is already a seam allowance included in all pattern pieces, so it should not be added.

### 6. READY? LET'S GET SEWING!

Sew according to the instructions.

# OVERVIEW

# Size Chart

## Measuring

It is recommended to determine the size by measuring your body, not your typical dress size you buy at the store. When measuring, it is best to use a flexible measuring tape. The tape should be just snug enough so it won't slide down. All measurements should be taken level with the ground.

**BUST**- wrap the tape measure around the fullest part of the chest, under the armpits.

**WAIST**- wrap the tape measure around the narrowest part of the waist. Typically near the belly button.

**HIPS**- wrap the tape measure around the fullest part of the hips/buttocks area.

**HEIGHT** - top of the head to the floor

For more detailed instructions on how to get accurate body measurements visit the MadamSew video tutorial <https://youtu.be/qowh-uGLGIQ>

## Womens size chart - body measurements

Metric (cm)	Size										
	6	8	10	12	14	16	18	20	22	24	26
Body height	164	166	167	168	169	170	171	172	172	172	172
Bust	80	84	88	92	96	100	104	110	116	122	128
Hips	90	94	97	100	103	106	109	115	120	125	130

Imperial (inch)	Size										
	6	8	10	12	14	16	18	20	22	24	26
Body height	64.5	65.3	65.7	66.1	66.5	66.9	67.3	67.7	67.7	67.7	67.7
Bust	31.5	33	34.6	36.2	37.8	39.3	41	43.3	45.6	48	50.4
Hips	35.4	37	38.2	39.3	40.5	41.7	42.9	45.2	47.2	49.2	51.2

# OVERVIEW

# Measuring

## Finished Garment Measurements

The perfect garment is one that fits you perfectly. But how do you know what size to make? Body measurements are a great starting point, but they don't always tell the whole story - different styles can fit differently, even in the same size. That's why it's always helpful to refer to a finished garment measurements table when trying to determine the best size for your sewing project.

The table below lists the dimensions of the dress in its finished state, so you can get a better idea of how it will actually fit. With this information in hand, you can make sure that the clothes you sew will fit you just the way you want them to.

Measurement (inch)	Size										
	6	8	10	12	14	16	18	20	22	24	26
Bust	31.5	33.07	34.6	36.2	37.8	39.4	41	43.5	45.6	48	50.4
Sleeve length	22.59	22.7	22.8	22.9	23	23.1	23.2	23.3	23.4	23.5	23.6
Collar length	6.3	6.3	6.3	6.3	6.3	6.3	6.3	6.3	6.3	6.3	6.3
Center Front	35.5	35.6	35.66	35.7	35.8	36.7	36.8	38.2	38.4	38.6	38.8
Center Back	37.8	38	38.2	38.4	38.6	39.5	39.7	41.1	41.4	41.7	42
Shoulder	3.6	3.8	4	4.2	4.4	4.6	4.9	5.2	5.5	5.8	6.1

## DRESS PATTERN

# Sewing instructions



1. Place the front and back pieces, right sides together, aligning the shoulder edges. Pin or clip the shoulders and sew with a  $\frac{3}{8}$  inch seam allowance, then finish the edges using a zig zag stitch on your machine.

*Alternative: if you have an overlocker/serger you can sew and finish seams with a 4 thread stitch with the front piece facing toward you.*



2. Press the seam flat and then press it to the side.



3. Pin the short sides of the collar together, right sides together, and sew. Finish the seam using a zig zag stitch and press the seam.

*Alternative: if you have an overlocker/serger you can sew and finish seams with a 4 thread stitch.*

## DRESS PATTERN

# Sewing instructions



4. Fold the collar in half lengthwise, wrong side to wrong side and press with the iron, taking care to match the seam line.



5. With the right sides together, align the edge of the collar with the neckline. Match the right shoulder seam with the collar seam. Pin in place and sew (you can baste by hand first if you'd like the extra support). Finish the seam with a zig zag stitch.

*Alternative: if you have an overlocker/serger you can sew and finish seams with a 4 thread stitch.*



6. Press the seam allowance toward the dress. Sew a topstitch along the collar seam catching the collar seam allowance (just short of  $\frac{1}{4}$ " ).

# Sewing instructions

---



7. Finish the raw bottom sleeve edges with a zigzag stitch.

*If using an overlocker, overlock with the right side of the fabric facing up.*



8. Fold the sleeve hem toward the wrong side of the fabric with a 1" hem allowance. Pin in place sew at 0.9" from the edge.

The photo shows how it looks from the right side and wrong side.

Press the seams.



9. With the right sides together, align the armhole edge with the sleeve cap edge by matching the notches. Pin in place and sew the shoulder seam. Zig zag stitch to finish.

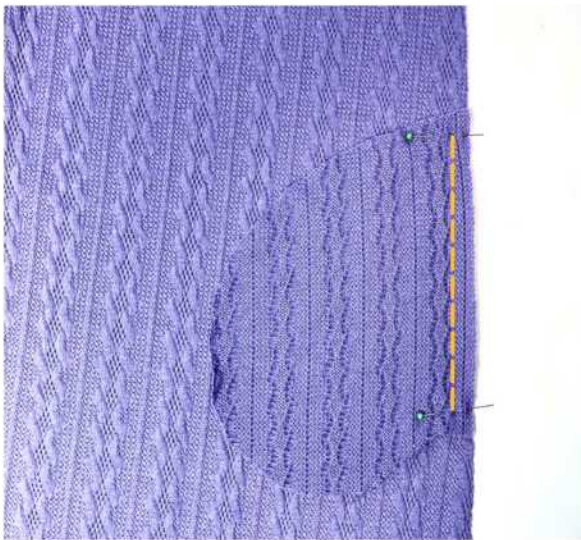
*Alternative: if you have an overlocker/serger you can sew and finish seams with a 4 thread stitch with the sleeve facing toward you.*

# Sewing instructions

---



10. Press the seam flat, then press the seam allowances towards the garment.



11. Attach the pocket pieces to the garment, right sides together, and sew in between notches finishing the seam with a zig zag stitch.

*Alternative: if you have an overlocker/serger you can sew and finish seams with a 4 thread stitch.*



12. Press the seam towards the dress.

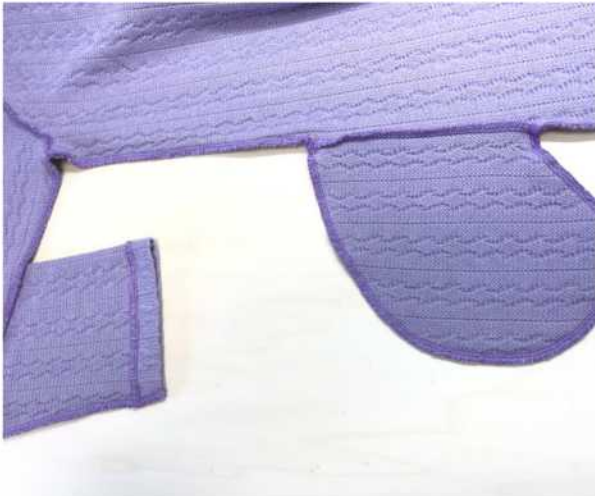
## DRESS PATTERN

# Sewing instructions



13. With right sides together, align the underarm side edges and pocket pieces, matching the notches and seams on both sides of the garment. Pin and baste by hand if you'd like the extra support. Sew with your machine, finishing with a zig zag stitch.

*Alternative: if you have an overlocker/serger you can sew and finish seams with a 4 thread stitch.*



14. Press the seam flat and then press the seam allowances towards the front.



15. Finish the raw bottom edge of the hem with a zig zag stitch.

*Alternatively, you can use your overlocker to finish the edges.*



# Sewing instructions

---



16. Fold the 1" hem allowance toward the wrong side of your fabric and pin in place and sew at 0.9" from the edge. Press the seams, trim any loose threads, and give your garment a final press.

*Congratulations! You've finished!  
Now try it on and feel proud of your accomplishment!*

## SWEATER DRESS

# Thank you!

---




You've got it! This sweater dress is a fun project that I hope you enjoy putting together. We look forward to seeing what you come up with!


Share your make with us and join us as we turn simple fabrics into stylish clothes, full of life!

 <https://www.instagram.com/madamsew>

 <https://www.facebook.com/MadamSews>

 [hello@madamsew.com](mailto:hello@madamsew.com)

 <https://madamsew.com>

 1-844-284-5336