

Vertical Mouse

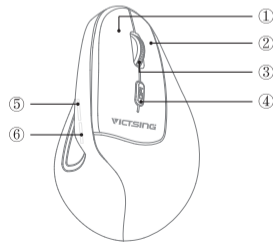


User Manual

Package Contents



Diagram



EN

1. Left Button
2. Right Button
3. Scroll Button
4. DPI Button
5. Page Up Button
6. Page Down Button

DE

1. Linker Taste
2. Rechte Taste
3. Scrollrad
4. DPI Knopf
5. Vorwärtsknopf
6. Rückwärtsknopf

FR

1. Bouton gauche
2. Bouton droit
3. Bouton de défilement
4. Bouton DPI
5. Bouton Haut de la page
6. Bouton Bas de page

IT

1. Pulsante Sinistro
2. Pulsante Destro
3. Rotella
4. Pulsante DPI
5. Pulsante Avanti
6. Pulsante Indietro

Specification

Size: 128*78*72 mm

Net Weight: 90±5g

Wireless Operation Range: 15m

Working Voltage: 3V

Working Current: 15mA

DPI Adjustment: 1000-1600-2000-2400

Compatibility:

Windows: 2000/ME/XP (X64)/ Vista/ 7/ 8/ 10;

Mac OS X 10.4 or above.

Spezifikationen

Größe: 128*78*72 mm

Nettogewicht: 90±5g

Drahtloser Betriebsbereich: 15m

Betriebsspannung: 3V

Arbeitsstrom: 15mA

DPI Anpassung: 1000-1600-2000-2400

Kompatibilität:

Windows:2000/ME/XP (X64)/ Vista/ 7/ 8/ 10;

Mac OS X 10.4 oder höher.

Spécification

Taille: 128*78*72 mm

Poids net: 90 ± 5g

Plage de fonctionnement sans fil: 15 m

Tension de travail: 3V

Courant de travail: 15mA

DPI Ajustement : 1000-1600-2000-2400

Compatibilité:

Windows: 2000 / ME / XP (X64) / Vista / 7/8/10;

Mac OS X 10.4 ou supérieur.

Specifica

Dimensione: 128*78*72 mm

Peso: 90±5g

Gamma di Wireless Funzionamento: 15m

Tensione di Funzionamento: 3V

Corrente di Funzionamento: 15mA

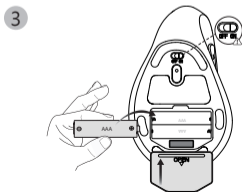
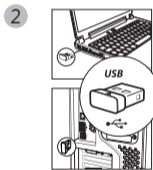
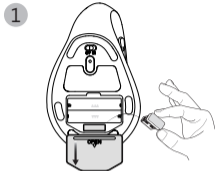
DPI Adattamento: 1000-1600-2000-2400

Compatibilità:

Windows:2000/ME/XP (X64)/ Vista/ 7/ 8/ 10;

Mac OS X 10.4 o superiore.

Operation



EN

1. Fetch the mouse and insert two AAA batteries into the battery compartment in the right direction; Turn on the switch at the bottom of the mouse.
2. Fetch the USB receiver from the battery compartment at the bottom of the mouse and plug it into the USB port of the computer.
3. It begins to serve when the system installs driver automatically.

DE

1. Entfernen Sie die Maus, die 2-AAA-Trockenbatterien entsprechend der richtigen Polarität in das Batteriefach der Maus und öffnen Sie die Unterseite des Mausschalters.
2. Holen Sie den USB-Empfänger aus dem Batteriefach an der Unterseite der Maus und stecken Sie ihn in den USB-Anschluss des Computers.
3. Es beginnt zu dienen, wenn das System den Treiber automatisch installiert.

FR

1. Retirez la souris, installez les piles sèches AAA 2PCS selon la polarité correcte dans le compartiment de la batterie de la souris, et ouvrez l' interrupteur sur le bas de la souris.
2. Retirez le récepteur du bas de la souris et insérez-le dans le port USB de l'ordinateur.
3. Il commence à fonctionner lorsque le système installe le pilote automatiquement.

IT

1. Prendere il mouse, mettere due PCS AAA batterie nello scomparto di batteria secondo i giusti poli, e poi accedere l' interruttore.
2. Prendere il USB ricevitore dal compartimento di batterie nel fondo al mouse e inserire il ricevitore nella USB porta di computer.
3. Dopo avere installato automaticamente il driver sistema, il mouse inizia a servire.

FCC Statement

Operation is subject to the following two conditions:

- (1) This device may not cause harmful interference, and
- (2) This device must accept any interference received, including interference that may cause undesired operation.
- (3) This device has been evaluated to meet general RF exposure requirement. The device can be used in portable exposure condition without restriction.

Note:

This equipment has been tested and found to comply with the limits for a Class B digital device, pursuant to part 15 of the FCC Rules. These limits are designed to provide reasonable protection against harmful interference in a residential installation. This equipment generates, uses and can radiate radio frequency energy and, if not installed and used in accordance with the instructions, may cause harmful interference to radio communications. However, there is no guarantee that interference will not occur in a particular installation. If this equipment does cause harmful

interference to radio or television reception, which can be determined by turning the equipment off and on, the user is encouraged to try to correct the interference by one or more of the following measures:

- Reorient or relocate the receiving antenna.
- Increase the separation between the equipment and receiver.
- Connect the equipment into an outlet on a circuit different from that to which the receiver is connected.
- Consult the dealer or an experienced radio/TV technician for help.