



**GUESS
WHAT?!?!**

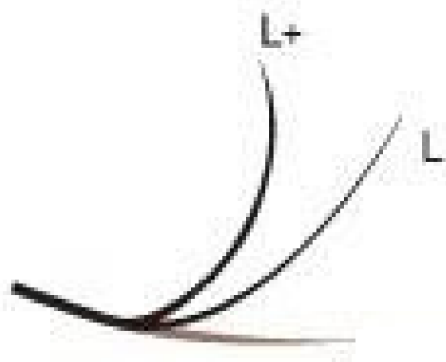
We now carry

L+ curl

lashes!



INTRODUCING THE L+ CURL



L Curl



L+ Curl



WHO
wears an L+
curl?

Clients with:
Deep set eyes
Heavily hooded eyes
Downward growing lashes

WHY
L+ curl?

The long & flat base with a more aggressive curl backwards opens the eye & also gives the illusions of an eyelid lift on your heavily hooded clients.

Sweet P Curls



C



CC



D



L+

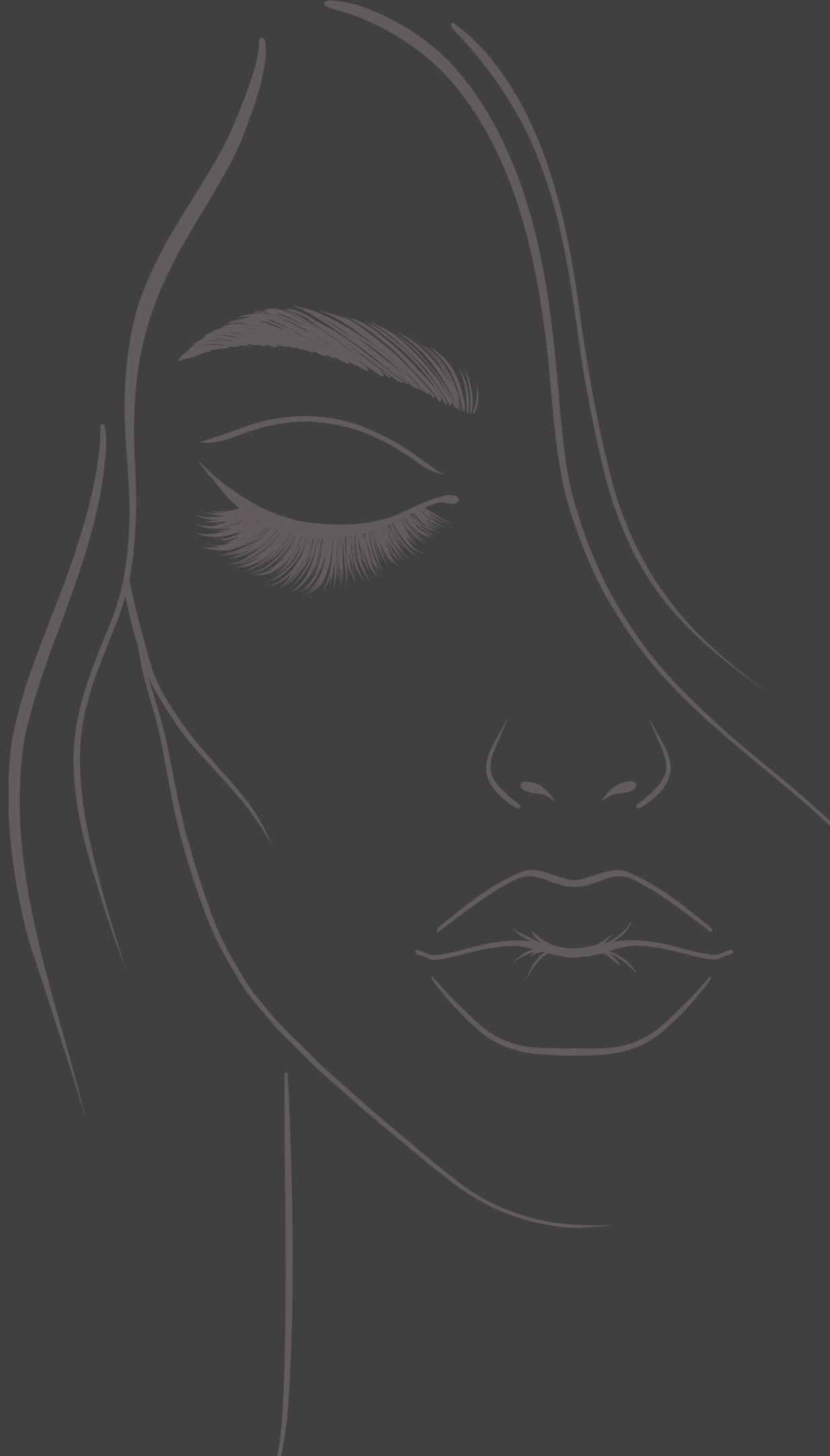
Stay tuned for more write ups
and videos coming on curls!

@sweetplash

C
CURL



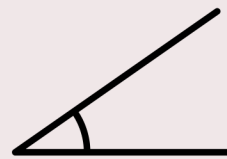
@sweetplash



THE C CURL EXTENSION

facts on curls

- The curlier the extensions, the less amount of "surface" area of extension touching the natural lash.
- CC is curlier than C, D is curlier than CC.
- The curlier the extension, the more dramatic the upward angle from the natural lash



- not all curls suit all clients & eye shapes!

WHY C CURL?

- 01. Gives a semi-dramatic look without being "too" curly.
- 02. Can be blended nicely with all other curls.
- 03. Can help soften the inner and outer corners on more dramatic sets. Too curly at the ends of the eyes can throw off the look of some sets.
- 04. Beautifully & subtly opens the eye.
- 05. Suits all age demographics.
- 06. On small &/or close-set eyes, C curl makes the eyes appear larger. C curl gives the illusion of drawing close-set eyes further apart.

@sweetplash



Who wears a C curl

&
Why

WHO

All ages

Those looking for a semi-dramatic, yet more natural look

Clients with straight to moderately curly lashes

Those with small &/or close set eyes.

WHY

The gentle curl of a C curl looks beautiful on all ages!

The C curl can give clients a dramatic look without looking "too fake"

The gentler curl means a longer base than a CC or D curl. This gives a greater contact point on the natural lash



C curl in some cases is not curly enough for downward growing lashes.



We carry C curl in the following diameters:

.03

.05

.07

.12

.15

7mm up to 16mm

& Mixed trays

www.sweetplash.ca