



WHAAAAAT

**NO ONE TOLD ME THERE'D BE
MATH!!!!!!**

JUST KIDDING WE DID IT FOR YOU

SO HOW DO YOU KNOW HOW MANY
VOLUME LASHES = A CLASSIC LASH?



Well there's this.....



$$V = R^2 \times (\pi) \times L$$



OR

YOU CAN SKIP THAT GROSSNESS



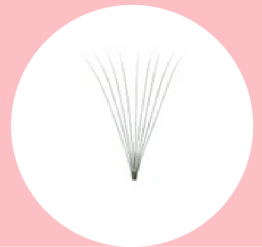


**IF YOUR CLIENT'S LASHES CAN SUPPORT UP TO A .10
CLASSIC EXTENSION THEN YOU CAN.....**

Do up to 11D fans if using .03 diameter extensions

Do up to 4D fans if using .05 diameter extensions

Do up to 2D if using .07 diameter extensions





**IF YOUR CLIENT'S LASHES CAN SUPPORT UP TO A .12
CLASSIC EXTENSION THEN YOU CAN.....**

Do up to 17D fans if using .03 diameter extensions

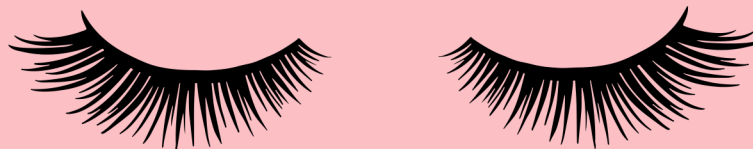
Do up to 5D fans if using .05 diameter extensions

Do up to 3D fans if using .07 diameter extensions

@sweetplash



IF YOUR CLIENT'S LASHES CAN SUPPORT UP TO A .15
CLASSIC EXTENSION THEN YOU CAN.....



Do up to 25D fans if using .03 diameter extensions

Do up to 9D fans if using .05 diameter extensions

Do up to 4D fans if using .07 diameter extensions

@sweetplash

IF YOUR CLIENT'S LASHES CAN SUPPORT UP TO A .18 CLASSIC EXTENSION THEN YOU CAN.....

Do up to 36D fans if using .03 diameter extensions

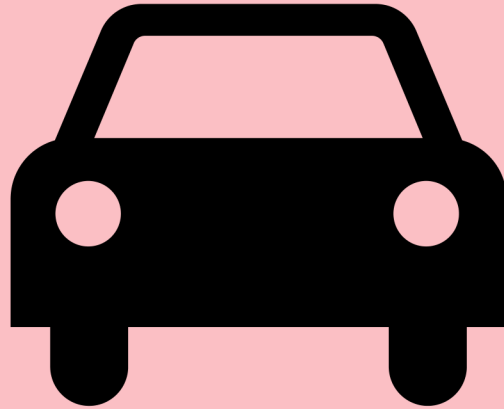
Do up to 12D fans if using .05 diameter extensions

Do up to 6D fans if using .07 diameter extensions

@sweetplash



IF YOUR CLIENT'S LASHES CAN SUPPORT UP TO A .20
CLASSIC EXTENSION THEN YOU CAN.....



JUST GO AHEAD AND PARK A CAR ON THOSE
DAMN THINGS.... AND SHARE THEIR SECRETS
TO THOSE NATURAL LASHES WITH US!

#ENVIIOUS!

@sweetplash

