



LASH HORRORS

KEEP
SCROLLING



CLIENTS BE LIKE...



CAN WE GO LONGER?

GUUUUURL

NO!

Traction alopecia is a
thing!!!!

what's that?



SO WHAT IS IT?

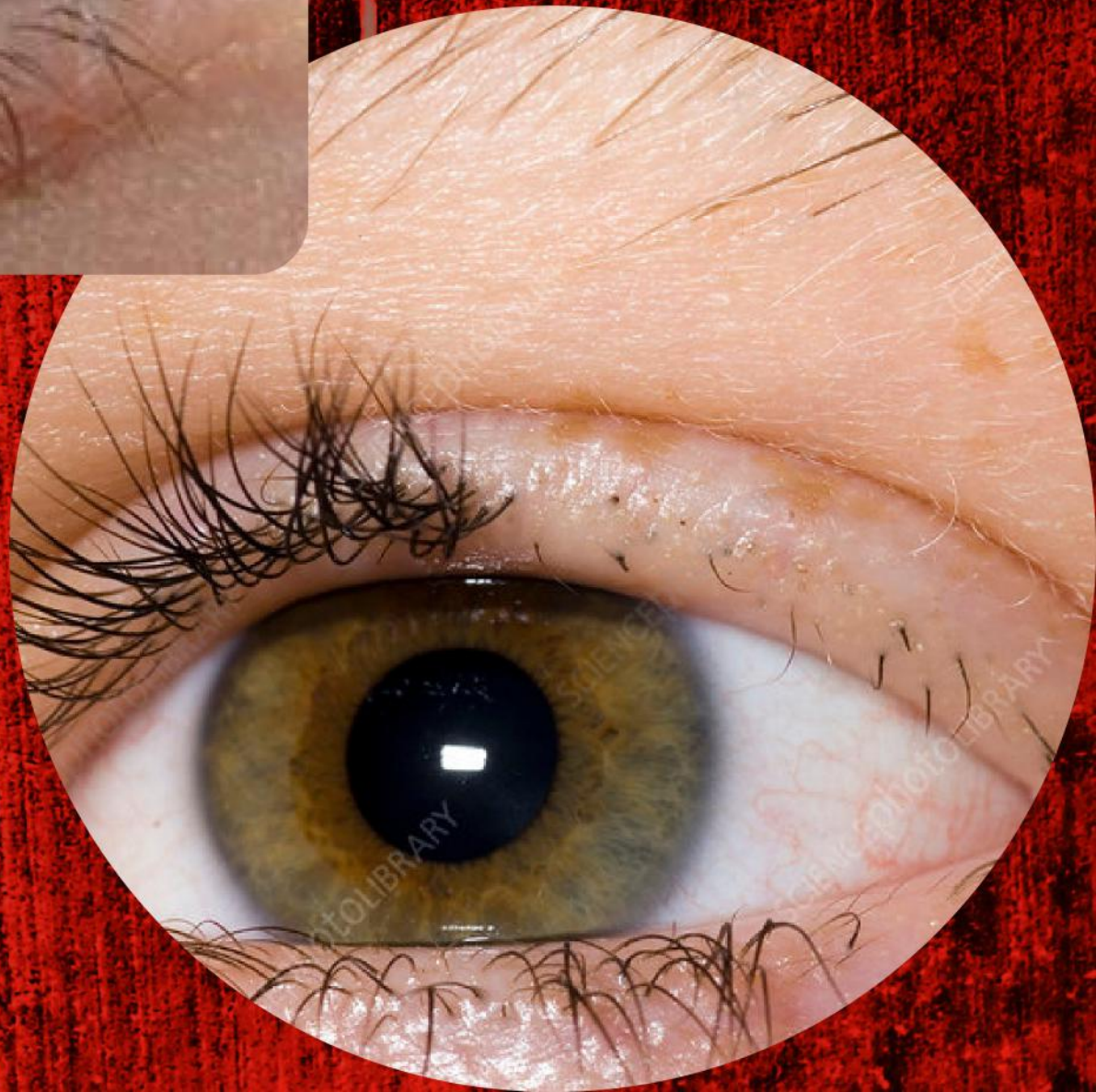
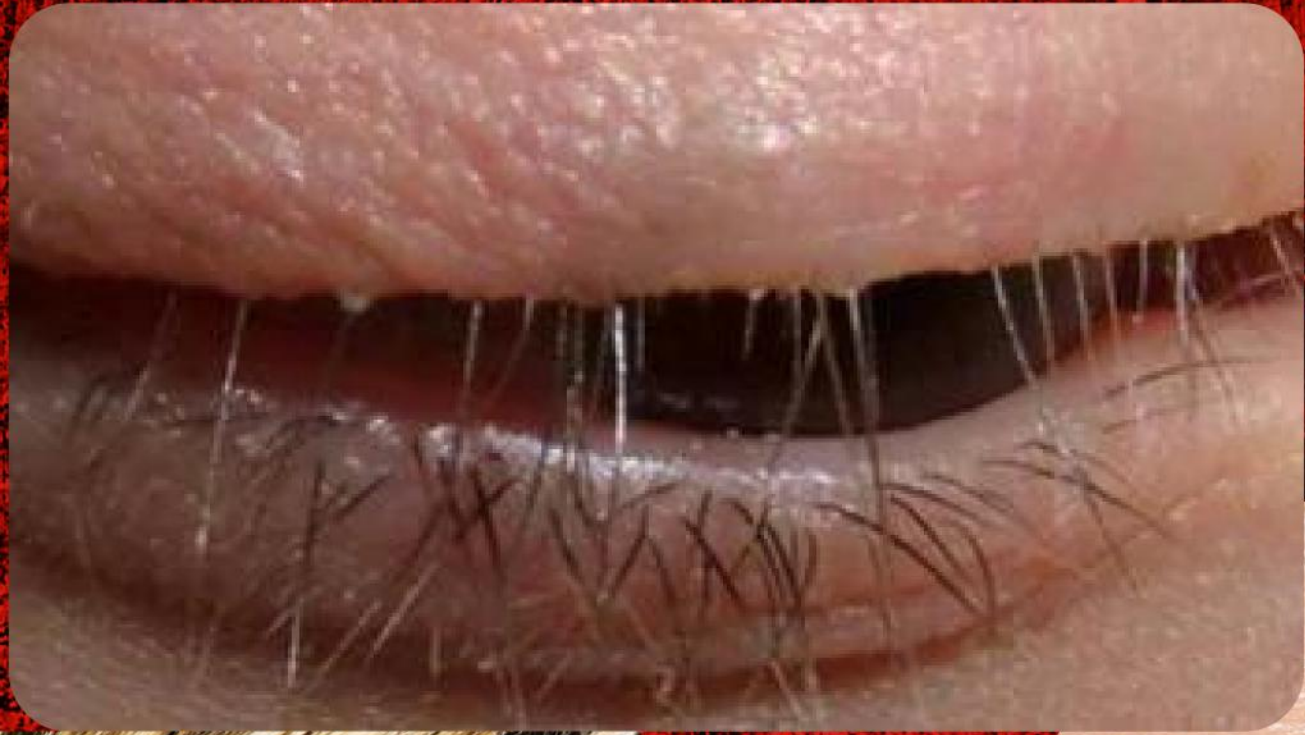
hairloss due to too much
pressure being put on the
follicle

what's it look like?



WHAT CAN IT
LOOK LIKE?

LASH
HORRORS



WHAT CAN CAUSE SUCH A LASH HORROR?



① Continually placing extensions too far up the natural lash causing excess pressure on the hair follicle.

② Using extensions that are WAY too long for their natural lash to support (no more than 1-3mm max).

③ Too large of fans for weak lashes.

④ Not removing heavy grown out extensions/fans at fills.

7 TIPS TO AVOID

@SWEETPLASH

TRACTION ALOPECIA

- MAKE SURE EXTENSIONS ARE .5-1MM FROM THE LID MAX!
- CLASSIC: USE .12 OR .15 DIAMETER LASHES. NO NEED FOR .20+
- VOLUME: USE .07, .05, .03 DIAMETERS (SEE POST "NO ONE TOLD ME THERE'D BE MATH" FOR EXPLANATION)
- MEGA VOLUME FANS SHOULDN'T BE OVER .03 DIAMETER
- DO NOT DO WORK YOU KNOW THEIR NATURAL LASHES CANNOT SUPPORT!
- REMOVE GOWN OUT EXTENSIONS AT FILL
- EXTENSION LENGTHS ARE NO MORE THAN 3MM LONGER THAN THE NATURAL LASH.