



DID YOU KNOW?

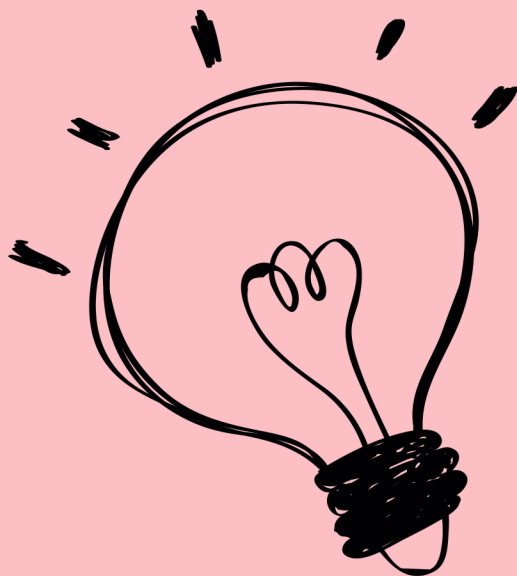
when washing your clients lashes
before their appointment you
should be using a neutral PH level
wash in order to get the best
results?

@sweetplash

In order for you to get the best bond between your client's lashes and the extensions, you want to be placing extensions on a PH balanced surface!

if you test your wash it should fall between a 6.5-7 ph range





Your products
ABSOLUTELY
do affect your retention.

Disclaimer: this post is about **WASH** and **ph levels**, primer and ph levels will be a different post all together....stay tuned for our Prime post!

Fun Facts!

Sweet P wash is....

organic
ingredients

cruelty
free!

a NEUTRAL
ph

made in
Canada!

U can
private
label



@sweetplash