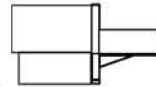
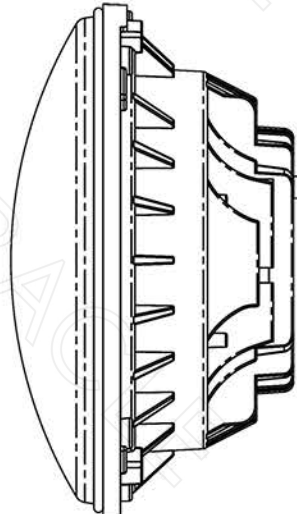


ORACLE LIGHTING

ORACLE REPLACEMENT LED HEADLIGHT WIRING GUIDE:

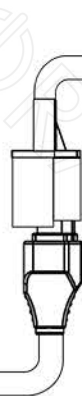
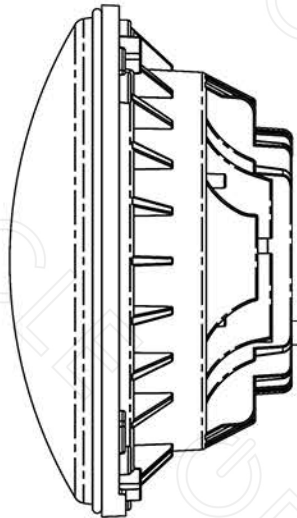
PRE-2007 WRANGLER MODELS:



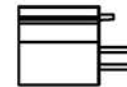
Factory Headlight Plug

- Connect H4 Plug Directly to Vehicle Headlight Plug

2007 - 2017 WRANGLER (JK) MODELS:



H4/H13 Adapter



Factory Headlight Plug

- Connect H4 Plug to Can-Bus Adapter
- Connect Can-Bus Adapter to H4/H13 Adapter
- Connect H13 Plug Directly to Vehicle Headlight Plug

Connecting the Halos:

[Youtube.com/watch?v=HpyD7loGECO](https://www.youtube.com/watch?v=HpyD7loGECO)

You Tube

SCAN TO WATCH>>>



TROUBLE	FAULT	ACTION
Lights work with the engine off but when engine is running the lights flash/ flicker.	Can-Bus Error.	Install or Replace Can-Bus Adapter (2007-2017 JK Wrangler Models).
High Beam projector is not illuminating when vehicle engine is running or off.	Can-Bus Error.	Install or Replace Can-Bus Adapter (2007-2017 JK Wrangler Models).

IF YOU NEED A REPLACEMENT CAN-BUS ADAPTER PLEASE CONTACT US TO GET THE REPLACEMENT PARTS SENT OUT

If you connect the can-bus adapter and the headlights do not function you do not have a can-bus Jeep and can remove the adapter.

1(800)407-5776 or email INFO@ORACLELIGHTS.COM

© 2018 ORACLE Lighting. All Rights Reserved