



2007-2014 GMC Yukon Demon Eye Halo Kit

INSTALLATION GUIDE

*Read ENTIRE Document before Installation!

Contents:

- (2) Hi Beam Halo Rings
- (2) Lo Beam Halo Rings
- (2) Demon Eye Inverters

2007-'14 GMC Yukon Installation Guide

2007-2014 GMC Yukon/ Denali Headlight Disassembly

- 1) Remove the 2 bulbs from the light. This allows the air inside of the lamp to heat at the same rate as the outside of the lamp.
- 2) Remove 2 Phillips screws from the lamp that hold the lens to the headlight body.



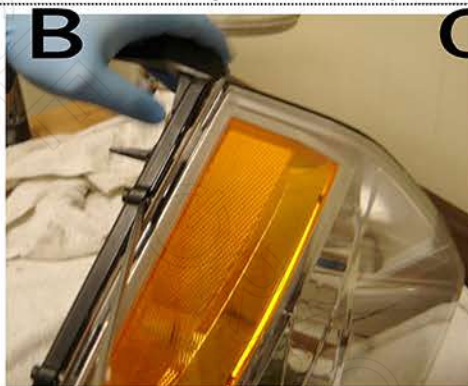
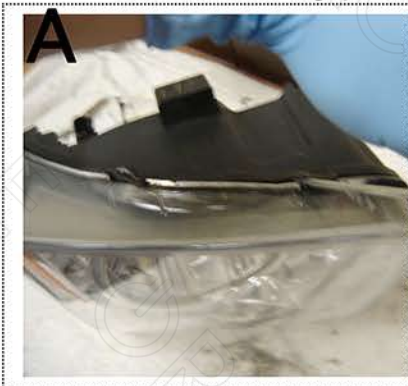
-First, test fit the headlight in the cool oven. The lamp should be situated in the center of the oven, away from the heating element.

-Preheat the oven to 210 degrees, once preheated insert the lamp and set a timer for 12 Minutes.

Installer Tips:

Latex gloves can be worn to assure no fingerprints are left on the inside of the lens or reflectors.

- 3) Carefully remove the light from the oven (**Caution: Light will be hot**).
Use Oven Mitts or shop towels to handle the hot lamp.
 - A- Start by lifting the tab at end of the light with a flathead screwdriver.
 - B- Now lift the tab at the bottom while pushing the lens away from the housing (careful not to PRY the lens from the housing.)
 - C- Continue this motion down the top of the headlight, working your way back. Once there is a gap between the lens use your hands to pull the assembly apart.



- 4) If the lens does not separate easily from the housing insert the lamp back into the oven for another 5 minutes and repeat the last step. While you pull the assembly apart be careful not to let any of the glue come in contact with the inside of the lens. If you have a helper get them pull the glue back while you separate the light.

***Note:** you want to preserve the OEM glue as much as possible for a good re-seal.

2007-'14 GMC Yukon Installation Guide

Installer Tips: Place the lens in a safe place and use or pliers to squeeze the housing lips back into the original shape. This will aid in keeping the OEM seal working like it should.

- 5) After you let the light cool you can separate the chrome housing from the lens by removing the Phillips screws holding the housing to the lens. .

***NOTE:** Now is a good time to paint the housing if you plan to do so.

Lo Beam Ring Installation

- 1) Begin by clearing an adequate workspace and lay the housing face down on a towel to protect the finish.

This Step will require you to handle the CCFL rings. While working with the halos remember:

- These are glass tubes which must be handled carefully.
- The Halos are fragile but will only break when forced.
- If ring breakage does occur do not handle rings for any prolonged amount of time.
- Dispose of the broken tube in a safe receptacle immediately.

Installer Tip:

To prevent "backlighting" effect from the rings you can use black PAINT marker to black-out the back half of the Halos.



- 2) Select the Lo-Beam Rings from the Kit (The round halos)

A- From the front of the housing set the ring in so it fits flush with the shape of the housing.

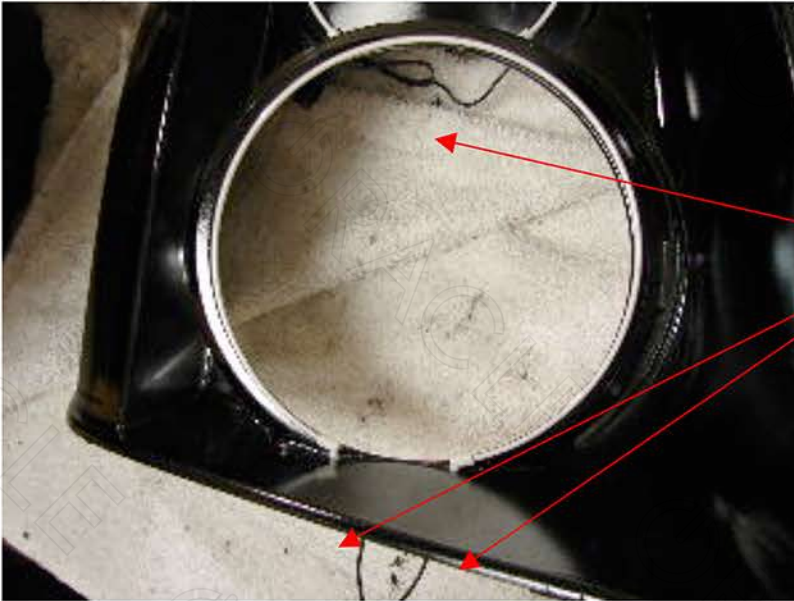
B- Mark the spots where the ends meet the housing and drill two 2mm holes for the wires to pass.



Drill 2mm Holes Here.

2007-'14 GMC Yukon Installation Guide

- 3) After you pull the wires through you can add epoxy to the end of the leads. .



Epoxy these points



AAC endorses the use of **Loctite 5 or 7 Min Quick Set Epoxy**.

-Avail at AutoZone, Home Depot, PepBoys, Walmart, and most Hardware Stores.

TIPS for using the adhesive:

- The Epoxy dries clear but keep the contact behind the ring so no dried epoxy is exposed and visible.
- The Epoxy will set in 5-7 minutes but should not be handled for 30 min or put in oven for at least 1 hour after application.

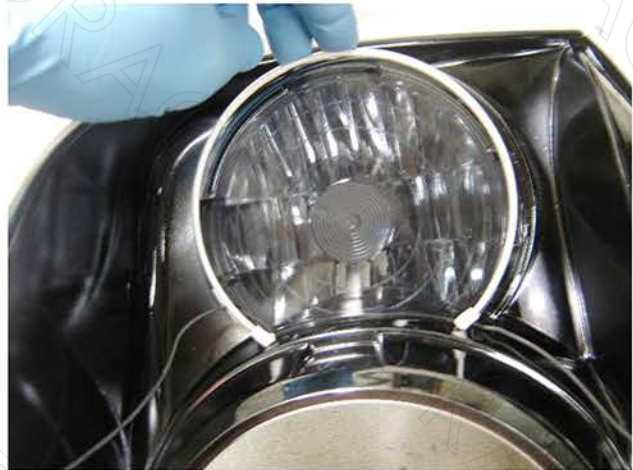
- 4- Allow a few minutes for the adhesive to set then check the contact and apply more adhesive if necessary.

Signal Beam Ring Installation

- 1) The Signal Beam Halo installs very similar to the Lo Beam Halo.

Be sure when you drill the holes down to make them oversized so the ring will "sit" down in the holes and become flush with the top rim of the reflector. If you do not do so the ring will hit the lens and crack when you go to reinstall the lens.

Now Epoxy the Rings in Place and use a small piece of painter's tape to hold the ring in place while the epoxy sets.



2007-'14 GMC Yukon Installation Guide

Inverter Wiring

- 1) Using double stick tape or epoxy secure the inverter to the bottom corner of the headlight housing.

- 2) Snap on the black ends to the barbs of the wires and twist the wires to keep them out of view.



Headlight Reassembly

- 1) Start by reinstalling the housings into the lens.
-Install the 2 Phillips Screws you removed before.
- 2) Now the assembly is ready to go back in the oven.
-Heat at 200 Degrees for 12 min
 - A- Have a clean towel laid down.
 - B- Remove the Headlight from the oven with Mitts
 - C- Use clamps or "vise-grips" to hold the assembly tight until it cools.

The Red and Black Wire can be tapped into the nearby sidemarker light for 12v power.



2007-'14 GMC Yukon Installation Guide