



ORACLE LIGHTING

RAM DT1500/TRX MIRRORS

ORACLE PART #5914

INSTALLATION GUIDE

TOOLS NEEDED:
FLAT HEAD SCREWDRIVER
PANEL TOOL
T-20 TORX BIT
10MM SOCKET
ELECTRICAL TAPE

STEP: 1A

SCAN QR CODE TO
WATCH FULL INSTALL VIDEO



STEP: 1B

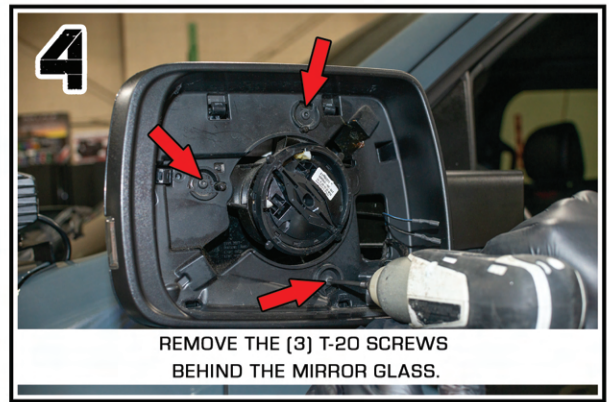
SCAN QR CODE TO
WATCH DOOR PANEL REMOVAL



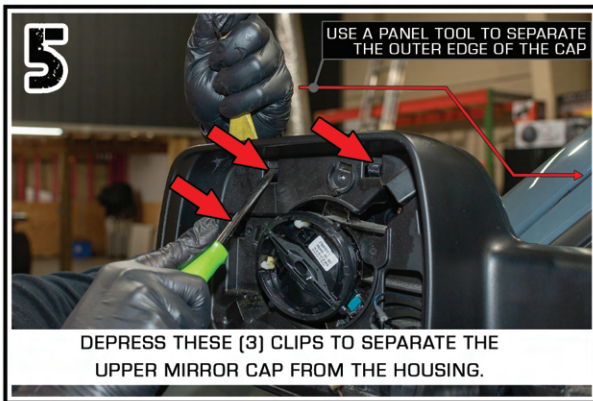
USE A FLAT HEAD SCREWDRIVER TO DEPRESS THESE CLIPS. THIS WILL RELEASE THE MIRROR GLASS.



UNPLUG ANY CONNECTORS YOU MAY HAVE CONNECTED TO THE MIRROR GLASS.



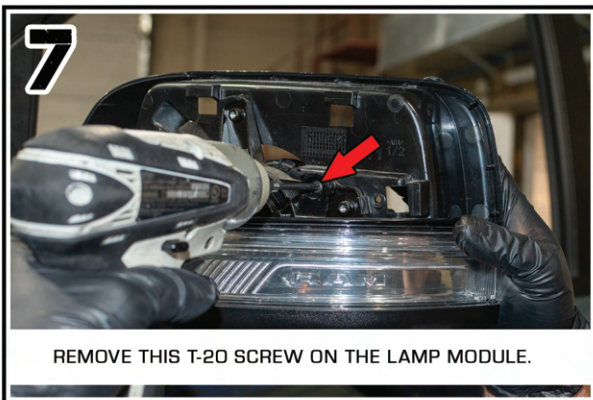
REMOVE THE (3) T-20 SCREWS BEHIND THE MIRROR GLASS.



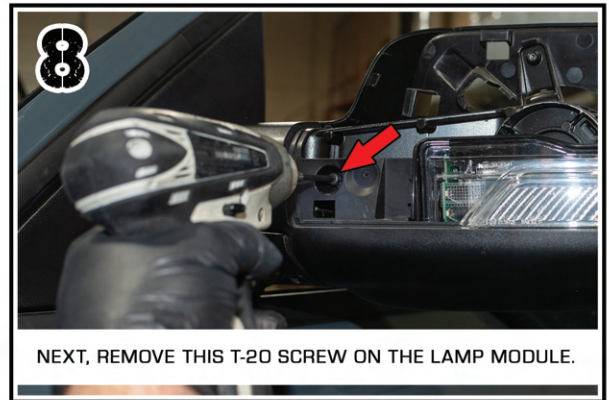
DEPRESS THESE (3) CLIPS TO SEPARATE THE UPPER MIRROR CAP FROM THE HOUSING.



NOW REMOVE THE UPPER MIRROR CAP FROM THE HOUSING.



REMOVE THIS T-20 SCREW ON THE LAMP MODULE.



NEXT, REMOVE THIS T-20 SCREW ON THE LAMP MODULE.



USE A PANEL TOOL TO REMOVE THE LOWER MIRROR CAP.



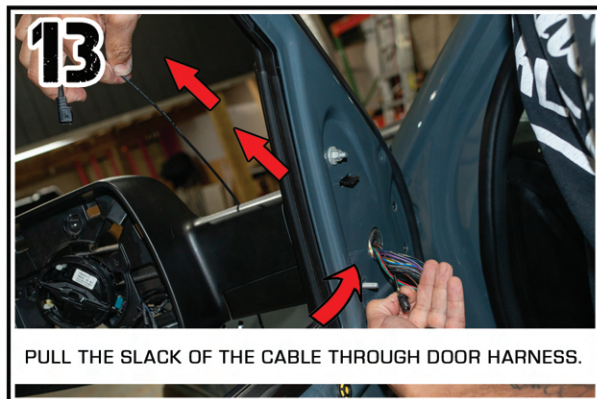
USE A PANEL TOOL TO SEPARATE THE LOWER MIRROR CAP.



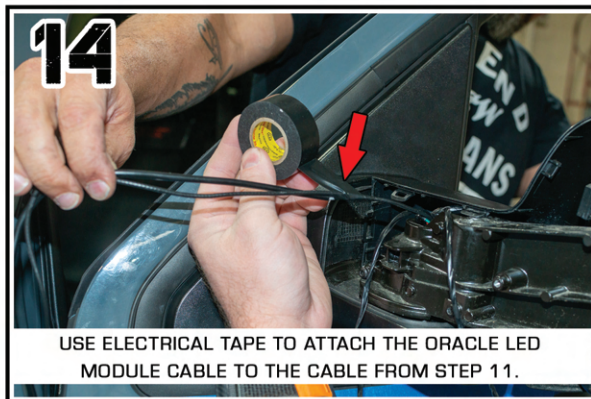
ON THE LOWER MIRROR CAP
LOCATE THIS CONNECTOR AND DISCONNECT.



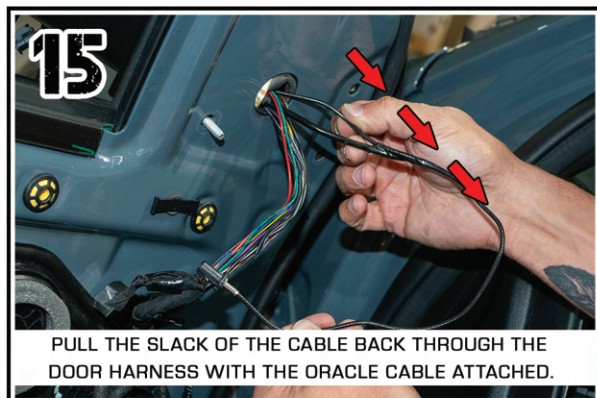
LOCATE AND DISCONNECT THE SAME CONNECTOR
ON THE INSIDE OF THE DOOR PANEL FROM STEP 11.



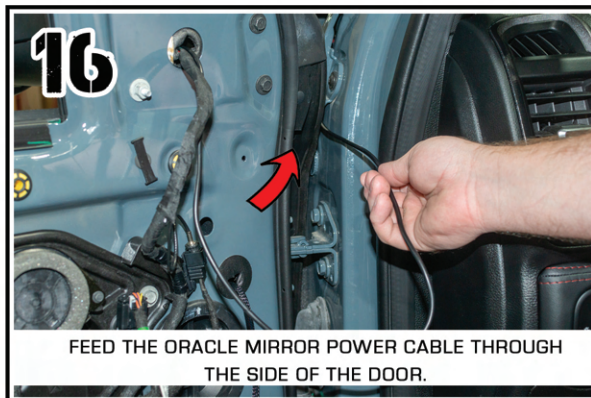
PULL THE SLACK OF THE CABLE THROUGH DOOR HARNESS.



USE ELECTRICAL TAPE TO ATTACH THE ORACLE LED
MODULE CABLE TO THE CABLE FROM STEP 11.



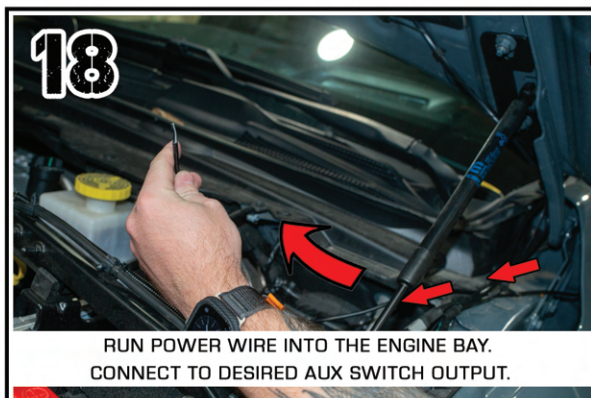
PULL THE SLACK OF THE CABLE BACK THROUGH THE
DOOR HARNESS WITH THE ORACLE CABLE ATTACHED.



FEED THE ORACLE MIRROR POWER CABLE THROUGH
THE SIDE OF THE DOOR.



INSTALL THE ORACLE MIRROR CAP.
FOLLOW STEPS 1-12 IN REVERSE.



RUN POWER WIRE INTO THE ENGINE BAY.
CONNECT TO DESIRED AUX SWITCH OUTPUT.