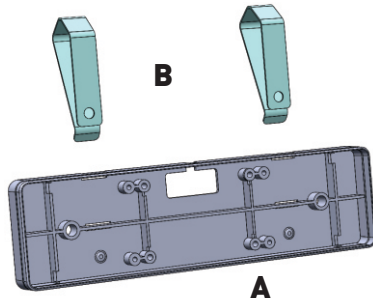


Trigger Visor/Flat Mount Assembly Instructions

Part Number 2021

PLEASE READ ALL INSTRUCTIONS AND CHECK TO BE SURE ALL PARTS LISTED ARE INCLUDED BEFORE BEGINNING ASSEMBLY.

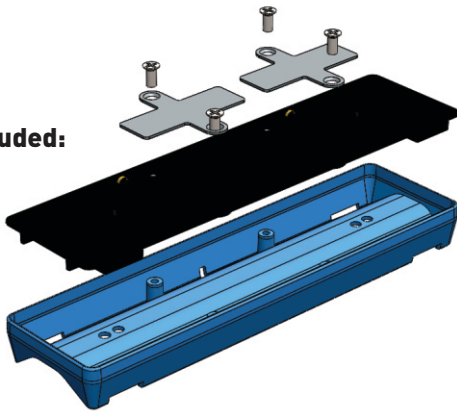
Included:



Please Note: This Kit is intended as an add on to the complete Trigger 6 Shooter and 4 Channel sets, it requires the original mount set from the 6 Shooter.

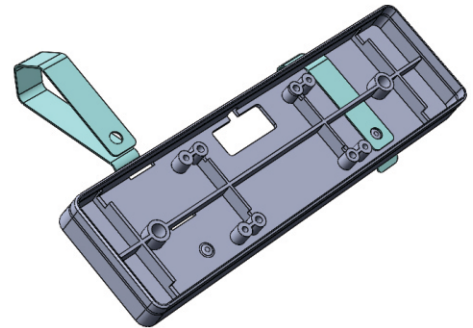
1

Not Included:

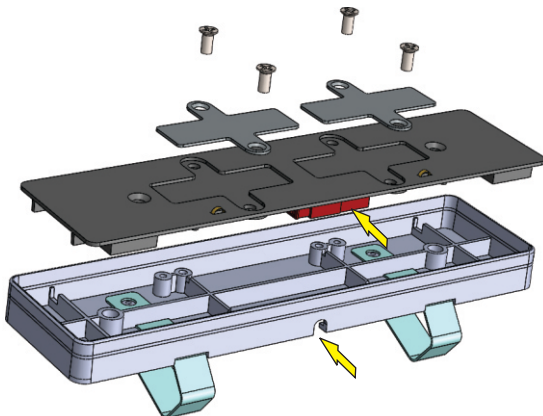


Begin assembly by removing the inner plate of the original Trigger mount included with the Trigger 6 Shooter kit. Remove the four screws and set aside with the top plate/wire/connector, all will be re-used for the visor mount.

2



Insert the metal visor clips into the base as shown, be sure they go all the way in and snap over the raised round detail.



Use the components removed from the original Trigger base to assemble the Visor mount as shown. Note the location of the 12 volt power connector and slot for the 12 volt wiring as indicated by the arrows.

If using as a flat mount, do not install the metal clips and use VHB tape (not included) or screws (not included) to mount as required.

Please contact AAC for help or warranty support at www.triggercontroller.com