

Standard



XTC428

Manual passenger tyre changer
(with motorcycle adapter)



Model: XTC428B

Product: Manual tyre changer

Description: The XTC428 manual tyre changer is the ideal machine to change both motorcycle and passenger tyres. Ideal for the home enthusiast looking to change tyres without the need for electricity or air. This is perfect for the mobile, farm or rural fitment center's. It looks like a semi automatic tyre changer and the four claws is controlled by a wrench that can clamp wheels with inside or outside clamping techniques. A tyre's bead is broken by means of downward force on the bead breaking attachment. The turntable use a 90 degree movement to remove the tyre from the rim.

Features:	Benefits:
Manual tyre changer	No air or electricity required to operate.
For tyres 10-19" (outside clamping) and 12-22" (inside clamping)	Durable and easy to operate.
Longer hand lever	Easy to press the tyre so it can be separated the bead from the rim with ease.
Equipped with 4pcs of bead pressing blocks	This helps the clamps to enter the tyre easily.
Turntable is rotated by longer hand lever	Makes the mounting & demounting operation much easier.
Rim is firmly locked by an auger lever	To assist with the operation.
Mounting head is made of a special material	To avoid distortion and rupture
Plastic inserts	To protect the rim and tyre from damage.
Equipped with bead pressing roller and bead pressing device	Saving labor when mounting the tyre to the rim.
Machine can be fixed on the ground by setscrews	Machine can be set/fastened in place.
	Continued Service: Load shedding can disrupt power supply and prevent businesses from using electric tyre changers. A manual tyre changer ensures that you can continue servicing customers' vehicles during power outages, minimizing downtime.
	Increased Customer Satisfaction: Being able to provide tyre-changing services during load shedding shows your commitment to customer satisfaction. Customers will appreciate your reliability and may become loyal to your business.
	Competitive Advantage: If competitors are unable to offer tyre-changing services during load shedding, you can gain a competitive advantage by being one of the few businesses that can meet customer needs in such situations.
	Reduced Dependency on Electricity: By having a manual tyre changer as a backup, you reduce your dependency on electricity-dependent equipment. This can make your business more resilient in regions prone to power outages or load shedding.

	<p>Cost Savings: Manual tyre changers are typically less expensive to purchase and maintain than electric ones. They don't require electricity to operate, so you can save on energy costs during regular operations as well as during load shedding.</p>
	<p>Flexibility: Manual tyre changers are versatile and can be used in various locations, including areas without a stable power supply. This flexibility allows you to expand your services or set up temporary service stations as needed.</p>
	<p>Reliable Service for Emergency Situations: In emergencies, such as flat tyres on a vehicle during load shedding, having a manual tyre changer can provide a crucial service to stranded motorists and generate goodwill for your business.</p>
	<p>Business Resilience: Load shedding is often a predictable occurrence in South Africa. Having a manual tyre changer as part of your business strategy demonstrates your adaptability and resilience in the face of such challenges.</p>
	<p>Maintenance Income: You can offer maintenance and repair services for manual tyre changers, creating an additional revenue stream for your business.</p>
	<p>Reduced Environmental Impact: Manual tyre changers are more eco-friendly as they do not consume electricity. This can be a selling point for environmentally conscious customers.</p>
	<p>Mobility: Manual tyre changers are portable and can be easily moved to different locations or job sites. This mobility allows you to offer tyre-changing services in various settings, expanding your potential customer base.</p>
	<p>Reliability: Manual tyre changers have fewer components and moving parts than electric or hydraulic machines, which means they are less prone to mechanical failures. This reliability ensures that you can provide consistent service to your customers.</p>
	<p>Versatility: Manual tyre changers can handle a wide range of tyre sizes and types, making them versatile tools for handling passenger vehicle tyres. This versatility can attract a diverse customer base.</p>
	<p>Quick Setup: Manual tyre changers are typically easier and quicker to set up and use compared to their electric or hydraulic counterparts. This efficiency can lead to faster service times and higher customer satisfaction.</p>

	<p>Lower Maintenance Costs: Manual tyre changers require less maintenance because they have fewer complex components. This can save your business money on maintenance and repairs over time.</p>
	<p>Increased Profit Margins: With lower upfront costs and reduced operational expenses, you may be able to maintain higher profit margins on your tyre-changing services.</p>
	<p>Business Flexibility: Manual tyre changers allow you to be more flexible in your operations. You can set up temporary service stations at events, trade shows, or remote locations without the need for a stable power source.</p>
	<p>Brand Reputation: Providing efficient and affordable tyre-changing services with a manual tyre changer can help build a positive reputation for your business, potentially leading to repeat business and referrals.</p>
	<p>Diversified Service Offerings: Adding a motorcycle adapter to your tyre changer allows you to expand your service offerings. This can attract a new customer base, including motorcycle enthusiasts, and increase your revenue streams.</p>
	<p>Increased Customer Loyalty: Offering specialized services for motorcycles can help you build a loyal customer base. Motorcycle owners who find your shop capable of handling their needs are likely to return for other services as well.</p>
	<p>Additional Revenue: Motorcycle tyre changing services can be profitable. Since motorcycle tyres are smaller and easier to work with than car tyres, you can complete the job quickly and charge accordingly.</p>
	<p>Upselling Opportunities: When motorcycle owners visit your shop for tyre changing, you have the opportunity to upsell other products and services, such as tyre balancing, wheel alignment, or tyre maintenance.</p>
	<p>Cross-Promotion: If you already offer automotive services, you can cross-promote your motorcycle tyre services to your existing customer base. This can lead to additional business from your current customers.</p>
	<p>Improved Customer Experience: Offering motorcycle tyre services demonstrates your commitment to customer satisfaction. It can enhance the overall customer experience and help you build a positive reputation in the community.</p>

	Training and Skills: Providing motorcycle tyre services can give your technicians an opportunity to expand their skills and knowledge, making them more versatile and valuable to your business.
	Word of Mouth Marketing: Satisfied motorcycle customers are likely to recommend your shop to other riders, helping you generate additional business through word of mouth.
	Community Engagement: Offering motorcycle tyre services can help you engage with local motorcycle clubs and organizations, further promoting your business in the community.
Training available	Technicians can be professionally trained to use the equipment and get the maximum benefit from it.
1 year warranty	The machine will be repaired if there are any factory faults and can be replaced if required.
Spares available	Should you have a breakdown you will not have to wait for your equipment to be repaired. If there is anything we don't have, we fly it in directly from the Suppliers.
Operational videos	Technicians can learn how to operate the equipment by watching a video, which is easier and more simple than written instructions.



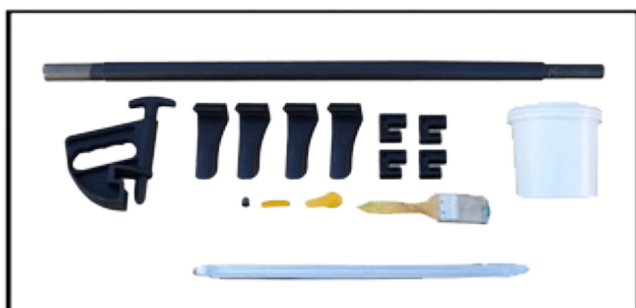
Plastic inserts



Bead pressing roller



Mounting head



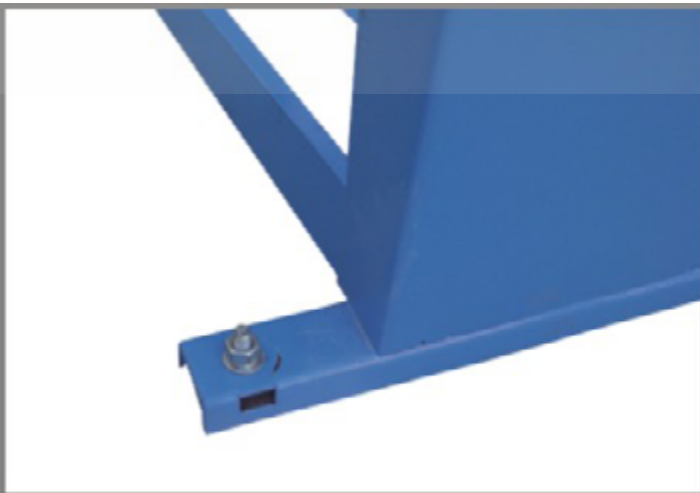
Standard accessories



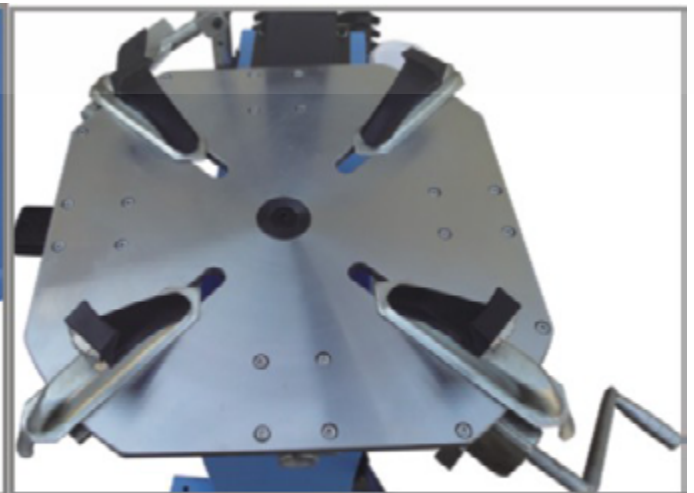
Equipped with 4 pcs of bead pressing blocks, which helps clamps enter the tire easily.



Turntable is rotated by longer hand lever, easier mounting and dismounting operation.



Machine is fixed on the ground by setscrew.

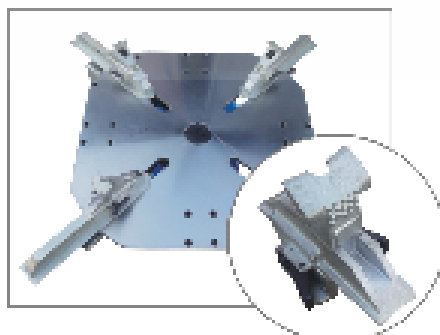


Rim is locked by auger lever, easier operation.



Longer hand lever can press the tire easily, which separates bead from rim well.

Technical information	
Max wheel width	300mm
Outside clamping	10" - 27"
Max width	1220mm
Net weight	123kg
Max wheel diameter	920mm
Inside clamping	12" -29"
Max depth	940mm
Max height	1960mm
Packaging dimensions	1010*710*580
Packaging weight	153 kg



Motorcycle adapters included

