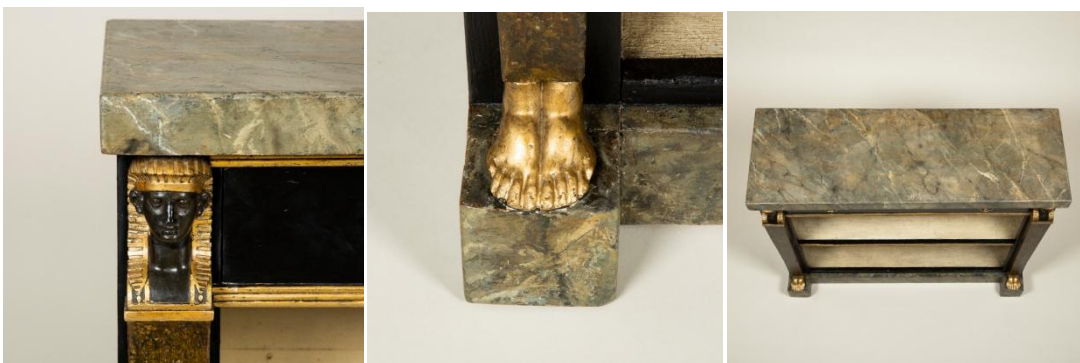


SIBYL COLEFAX & JOHN FOWLER

INTERIOR DESIGN, DECORATION AND ANTIQUES



A pair of low painted bookcases, each with a faux marble top over a drawer with open shelves flanked by Egyptian headed herms on a plinth base. English, 19th century.
(Of slightly differing widths).



Dimensions:

Height 35.25"(89.5cm)
Width 40"(102cm) – the wider of the pair
Depth 11"(28cm)

Reference: AF21061

Price £14,500.00

89-91 PIMLICO ROAD | LONDON SW1W 8PH
TEL: +44 (0) 20 7493 2231 | FAX: +44 (0) 20 7355 4037