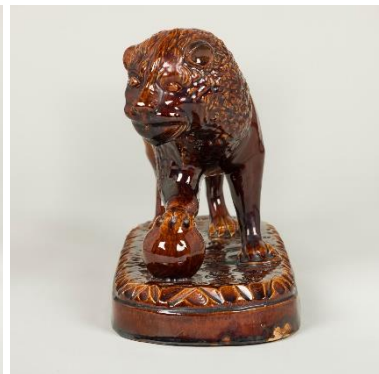
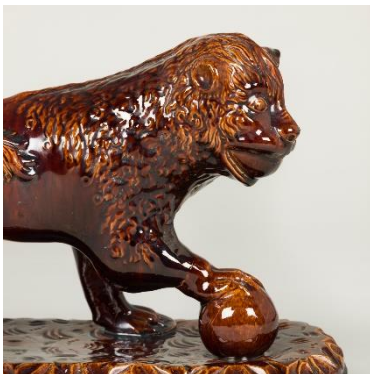


# SIBYL COLEFAX & JOHN FOWLER

INTERIOR DESIGN, DECORATION AND ANTIQUES



A treacle-glazed pottery lion. Probably late 19<sup>th</sup> century.



**Dimensions:**

Height 10.25"(26cm)

Length 15.75"(40cm)

Depth 7.25"(18.5cm)

**Reference:** AF22614

**Price** £1,950.00

89-91 PIMLICO ROAD | LONDON SW1W 8PH  
TEL: +44 (0) 20 7493 2231 | FAX: +44 (0) 20 7355 4037