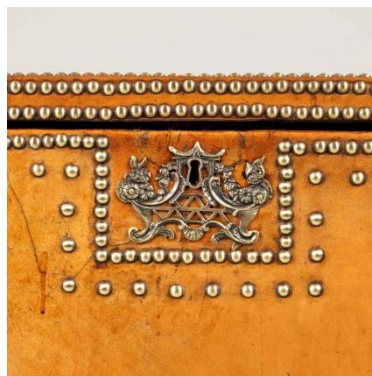


# SIBYL COLEFAX & JOHN FOWLER

INTERIOR DESIGN, DECORATION AND ANTIQUES



A rectangular trunk covered with tan leather and decorative brass nailing and marquetry, lined lid. 18<sup>th</sup> century with later stand.



**Dimensions:**

Height 20.75" (53cm)  
Width 38" (96.5cm)  
Depth 20" (51cm)

**Reference:** AF22504

**Price** £8,850.00