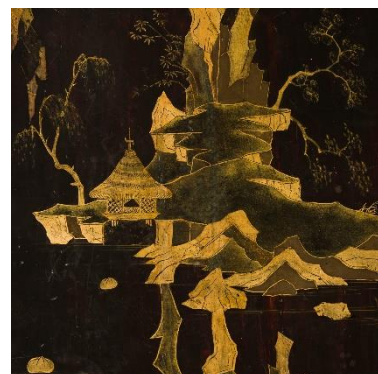


SIBYL COLEFAX & JOHN FOWLER

INTERIOR DESIGN, DECORATION AND ANTIQUES



An 18th or 19th century Japanese lacquer coffer made from earlier lacquer panels, with engraved brass mounts.



Dimensions:

Height 23.25" (59.5cm)
Width 49.25" (125.5cm)
Depth 22.75" (58cm)

Reference: AF22341

Price £12,000.00

89-91 PIMLICO ROAD | LONDON SW1W 8PH
TEL: +44 (0) 20 7493 2231 | FAX: +44 (0) 20 7355 4037