

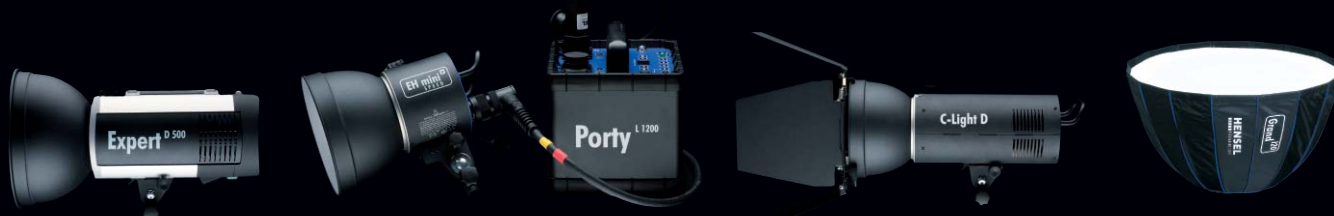
//competence in light

PRODUCT-PORTFOLIO 2017



// PHOTO - CHRISTIAN KUHLMANN / MODELL - KATLIJN JANAS
LIGHT - HENSEL PORTY L 1200 BATTERY SYSTEM

COMPACT FLASHES // GENERATORS // FLASH HEADS & RING FLASHES // SPOTS
SPECIAL FLASH HEADS // CONTINUOUS LIGHT // LIGHT FORMERS & ACCESSORIES



HENSEL
PERFORMING LIGHT



PHOTO // PATRICK TIEDTKE // WWW.PATRICK-TIEDTKE.DE
MODEL // VIOLETTA - MODELPOOL
WITH THE NEW SOFTBOX GRAND 120

// contents



COMPACT FLASHES
PAGE 04



BATTERY POWER SUPPLY
PAGE 16



GENERATORS
PAGE 20



FLASH HEADS
PAGE 32



SPECIAL FLASH HEADS
PAGE 37



SPOTS
PAGE 42



CONTINUOUS LIGHT
PAGE 46



LIGHT FORMERS
PAGE 50

YOU CAN FIND ALL TECHNICAL DATA OF THE HENSEL DEVICES AS WELL AS DETAILED INFO ABOUT THE WHOLE HENSEL SYSTEM ON OUR WEBSITE: WWW.HENSEL.DE



Become a Hensel fan!



[hensel.visit](https://www.facebook.com/hensel.visit)

You Tube

[HenselVisit](https://www.youtube.com/HenselVisit)

Instagram

[hensel_visit](https://www.instagram.com/hensel_visit)

MADE IN GERMANY

SINCE 1963 COMPETENCE IN LIGHT //

- // DEVELOPED AND PRODUCED IN GERMANY
- // HIGH ASSET PROTECTION AND BEST VALUE RETENTION
- // BEST ADVISORY SERVICE AND PRODUCT TESTING WITHOUT ANY OBLIGATION
- // CONSISTENT DEVELOPMENT
- // OBSERVANCE OF ALL SAFETY REQUIREMENTS
- // CONTINUOUS ASPIRATION FOR TECHNOLOGICAL ADVANCEMENT
- // FLASH TECHNOLOGY FOR INDUSTRIAL USE
- // CERTAINTY OF SERVICE AND SPARE PART SUPPLY BY THE MANUFACTURER
- // LONG-TERM RESILIENCE AND LONGEVITY
- // SUSTAINABLE PRODUCTION AND JOB PROTECTION

// LIGHT MANUFACTURING



DEAR PHOTOGRAPHER,

We are proud to be able to present you with our new product catalog 2017. For over 50 years, we have been developing and producing high-quality studio equipment and accessories for professional photographers.

In October 1963, Ingrid and Wolfgang Hensel founded the company Hensel. Initially a small enterprise focused on sales, the company has grown over the years into a leading manufacturer with distributor located in more than 70 countries.

We have always remained true to the location of Germany, the city of Wuerzburg to be exact. And also to the philosophy of our founders to offer development, production, and service from a single source at reasonable prices and in best quality.

Today, Hensel is one of the most innovative manufacturers on the market and meets highest demands in production quality and performance.

We prove this not just inside the photo studio but also in numerous industrial sectors, e.g. in UV lacquer hardening and measurement technology.

We are proud of what we have achieved and want to sincerely thank you, our customers. Only because of your cooperation, constructive suggestions, and customer-oriented development projects were we able to reach our current level.

Thank you also for your interest and your loyalty to the brand Hensel. We hope you enjoy our latest product catalog.

YOUR HENSEL TEAM

1963 1964 1965 1966 1967 1968 1969 1970 1971 1972 1973 1974 1975 1976 1977 1978 1979 1980 1981 1982 1983 1984 1985 1986 1987 1988

1989 1990 1991 1992 1993 1994 1995 1996 1997 1998 1999 2000 2001 2002 2003 2004 2005 2006 2007 2008 2009 2010 2011 2012 2017

On April 1, 1963 the company Studietechnik W. Hensel OHG is founded in Würzburg with offices in the city center. First sales dealer for Company Cramer's continuous/hot light.

Relocation to the new company headquarters on Florian-Geyer-Straße.



First complete in-house development. Start of the Hensel Minispot equipment.

Expansion of the company headquarters. The floor space is nearly doubled.



The birth of Hensel's legendary 3000 J generator. The series 3200 B / 3200 Power Pack becomes the workhorse of many advertising photographers.

Introduction of Monoflash equipment at the photokina '82. The company's first compact series with 400 / 600 and 800 J.



Finally a "portable" 6000 J generator, the Hensel 6000 U, significantly below 20 kg. Sensationally light and handy at that time.



The Expert A compact equipment is presented. This series becomes an unparalleled sales success. Due to the ongoing development, it offers technical top performance at all times, and is also in its current Expert D version the flagship of Hensel's compact equipment sector.

This is the year Hensel's industrial segment, Visit, develops, builds, and delivers their first equipment pieces. A success story even today. The different segments inspire each other and profit accordingly.

More construction. Even bigger, even more practical, and ideally situated in the industrial area.



The Trio 3000 AS. Full asymmetry and four flash output sockets open up completely new options.

Mr. and Mrs. Hensel retire from company management. Hensel is sold. The transition happens practically unnoticed because the new owners adopt most of the existing structures.

The Party system is introduced with the first Party 1200. The name becomes synonymous with a whole equipment class: battery-operated professional flashes are often called Partys. 1200 J performance output, battery operation, modeling light, and really "portable" in the sense of the word. Today's top unit - the Party L 1200. Lithium battery, radio remote control function, and thanks to its AC power drawer, it can also be used as a 100% studio generator.



Expert D - The performance winners among compacts.



Speed Max, the fastest compact flash unit worldwide with flash duration times of up to 1/66.000 s.

CITO - The world's fastest compact flash. WiFi Remote App.



The Party L battery generators with lithium batteries bring new ease to mobile photography. Additionally, a power drawer is available which lets you use the equipment unconditionally as a studio generator inside the studio.

Introduction of the Expert Pro series, the first radio remote-controllable compact units.

HENSEL MILESTONES

// compact flashes

CONSISTENT TECHNOLOGY // WIDE RANGE OF LIGHT FORMERS

- // WIFI REMOTE 05
- // INTEGRA MINI 06
- // INTEGRA PLUS 07
- // EXPERT D 250 SPEED 08
- // EXPERT D 09
- // KITS 10
- // CITO 500 12
- // FREEMASK 13

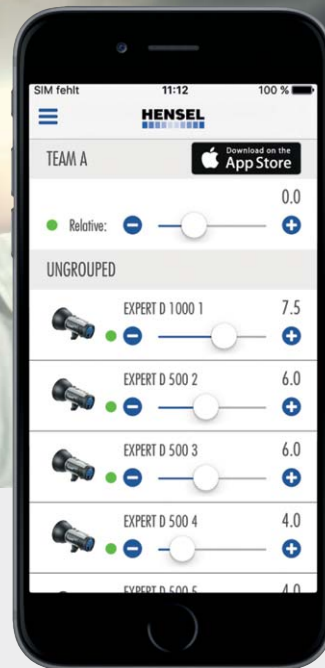


NEW

WIFI REMOTE. EFFICIENT, CONVENIENT AND VERSATILE. //

HIGHLIGHTS

- // App for iOS and Android
- // Bi-directional function — Instant feedback of all settings
- // Direct control of 12 flash units in max. 10 teams, no router required
- // Flash units can be controlled individually or globally
- // Saving of all settings plus pictures of set-ups for quick allocation and repeating
- // Display of all controlled flash units' flash duration



WIFI REMOTE. EFFICIENT, CONVENIENT AND VERSATILE.

Hensel belongs to the pioneers in the area of wireless flash unit control via computer: in 1998, when the Tria generators were introduced, "Flash Link" software and hardware were already available for them and was used in many studios. Thanks to the enormous progress in the area of communication technology, there are many more options available today. Furthermore, devices in form of smart phones and tablets are available and these are ideally suited to function as mobile remote controls.

Thus, users can now control flash units and check all settings directly via the "Hensel Remote" App. This is a great help, e.g. when working on location and without an assistant. More complex set-ups inside the studio can be saved and quickly reproduced at a later time which increases productivity.

The Hensel WiFi Remote App is available for iOS and Android and allows you to control all functions of Hensel Flash units when these are equipped with the corresponding functionality. The settings can be saved and recalled any time.

Besides the flash power which can be displayed either in relative f-stops or Ws, the modeling light, the sync mode, and the ready signal can also be remotely controlled. When operating several units, each unit's power can be controlled individually or jointly — the latter allows fast correction of the whole exposure but without affecting light characteristics. The flash synchronization is done either via the proven Strobe Wizard Plus radio system by Hensel, via sync cord, or photocell. Due to a special protocol and the use of advanced WiFi modules, up to 12 Hensel flash units can be directly controlled without router via the Hensel App. Individual flashes can be combined

into large groups and controlled together; perfect, for example for large light banks or background lighting. In order to quickly find and match saved settings, pictures of the set-up taken with the respective smart phone or tablet, can be stored in combination with all settings. Working in the studio is made easier even further due to the option of forming up to 10 teams in the App, each able to control a maximum of 12 units independently. Another unique feature of the Hensel App is the option to have the flash duration times of all controlled flash units displayed. This allows you to select the power in such a way as to reliably freeze fast motion. All of the current Hensel Expert D series flash units are equipped with the WiFi function. Older Expert D units can be upgraded which proves that Hensel systems truly are future proof. Further Hensel compact flashes and flash generators are also going to be equipped with this remote control option soon. The Hensel WiFi Remote App is available for download in iTunes and Google Play stores free of charge.

Download the free Hensel Remote App here:



Apple, the Apple Logo, iPhone and iPad touch are trademarks of Apple Inc. registered in the USA and other countries. AppStore is a service brand of Apple Inc. Android, Google Play and the Google Play logo are trademarks of Google Inc..

HENSEL INTEGRA MINI COMPACT FLASHES //



THE BEST FOR STARTERS – INEXPENSIVE INSTEAD OF CHEAP!

Whether you are a hobby photographer, beginning professional, or cost-conscious professional, these units can be used in various ways and offer convincing performance. Developed and manufactured in Germany. Made in Germany and at a price like never before!

The practice-oriented features are convincing in every detail. Changing the reflector is a matter of seconds, thanks to the convenient 360° quick-change automatic. The complete mechanics (steel) and the holder plate (aluminium casting) offer strongest holding power and guarantee many years of reliable function.

Innovative to use, with real keys underneath the foil. Additionally, there is a distinct embossing around each key which allows you to maintain eye contact and easy control. Your professional entry into one of the world's largest studio systems.



Integra Mini kit offers can be found on the pages with kit offers!

A detailed overview of all features and technical data can be found at www.hensel.de under the applicable equipment category and at the end of the chapter on compact flash units.



HIGHLIGHTS

- // Sturdy and lightweight metal housing
- // Simple operation and highly reliable
- // Adjustable 6 f-stop power range in 1/10 f-stops
- // Bright 300 W halogen modeling light

- // Flash recycling times from 0.2 s – 1.3 s
- // Short flash durations up to 1/1,820 s (t 0.5)
- // Bi-voltage (120 V/60 Hz and 230 V/50 Hz)
- // Off-grid operation in combination with Power Max L (optional accessory)

Code No. 8370 // Integra Mini 300, Bi-voltage

Compact flash unit with 300 J, 300 W halogen modeling lamp, glass protective dome, metal housing, power regulation in 1/10 f-stops with push-buttons, with integrated active cooling and bi-voltage technology. L x W x H: 20.3 x 12.3 x 18.2 cm. Weight: 1.8 kg

Code No. 8380 // Integra Mini 600, Bi-voltage

Compact flash unit with 600 J, equipped like Integra Mini 300
L x W x H: 29.9 x 12.3 x 20.4 cm. Weight: 2.3 kg

Scope of delivery: 1x compact flash unit with panhead, 1x flash tube, plug-in style (9450401 for Integra Mini 300, 9450405 for Integra Mini 600), 1x 300 W halogen modeling lamp (128), 1x transport cap (9456311), 1x glass protective dome (9454638) and each 1x power (121) and sync cord (122).





HENSEL INTEGRA PLUS COMPACT FLASHES //

„ALL-ROUND COMPACT FLASHES FOR MANY APPLICATIONS“

The Integra units guarantee extremely sturdy construction, intuitive operation, and a comprehensive set of accessories. Each unit also has an integrated freemask function at no additional charge! All housings are made to be extremely tough and consist of a 2.6 mm thick aluminium profile. Additionally, the equipment features high quality performance electronics that allow you to operate it under toughest conditions. These units offer much more than can be imparted by purely listing features. "One" shooting tells more than a "thousand" words.



Code No. 8814FM // Integra 250 Plus, Bi-voltage

Compact flash unit with 250 J, 300 W halogen modeling lamp, glass protective dome, aluminum drawn cased housing, power regulation in 1/10 f-stops, with integrated active cooling and Bivoltage technology. With integrated radio receivers for Strobe Wizard Plus and freemask. L x W x H: 33 x 15 x 23 cm. Weight: 2.75 kg

Code No. 8815FM // Integra 500 Plus, Bi-voltage

Compact flash unit with 500 J, equipped like Integra 250 Plus. L x W x H: 33 x 15 x 23 cm. Weight: 2.87 kg

Code No. 8816FM // Integra 1000 Plus, Bi-voltage

Compact flash unit with 1000 J, equipped like Integra 250/500 Plus. L x W x H: 39.5 x 15 x 23 cm. Weight: 3.9 kg

Scope of delivery: 1x compact flash unit with pan head, 1x flash tube, plug-in style (9450401 for Integra 250/500, 9450420 for Integra 1000), 1x 300 W halogen modeling lamp (128), 1x glass protective dome (9454638), 1x transport cap (9456311) and each 1x power (121) and sync cord (122). Attention: radio transmitters are not included in delivery! (Optional radio transmitters: code no. 3950 / 3955)

Integra Plus kit offers can be found on the pages with kit offers!

A detailed overview of all features and technical data can be found at www.hensel.de under the applicable equipment category and at the end of the chapter on compact flash units.

HIGHLIGHTS

- // Very short flash duration up to 1/2,400 s and fast flash sequences from 0.3 s
- // Adjustable 6 f-stop power range in 1/10 f-stops
- // Reflector quick-change automatic for tools with EH connector (10 cm)
- // Integrated radio remote receivers – Strobe Wizard Plus and freemask
- // Bi-voltage (120 V/60 Hz and 230 V/50 Hz)
- // Remote controlled: power adjustment, flash release, modeling light, stand-by
- // Off-grid operation in combination with Power Max L (optional accessory)
- // freemask function: cut-out masks in perfect quality while shooting



HENSEL EXPERT D 250 SPEED COMPACT FLASH //

THE FAST COMPACT FLASH FOR DYNAMIC PEOPLE & FASHION PHOTOGRAPHY

The Expert D series stands out due to the remarkably fast flash sequence times and short flash duration times. Compared with many other compact flashes, Expert D achieves results at high power output that are ideal for dynamic exposure series. The Expert D 250 Speed was especially developed with regard to highest speed and stability required by demanding users. Flash sequence times from 0.22 - 0.045 s (up to 22 flashes/second) and its flash duration times from 1/4,000 - 1/10,000 s make it simply perfect for rapid exposure series and for freezing fast movements. The flash unit achieves already a flash duration of 1/10,000s at a comparatively high output of 90 - 32 Ws — for absolutely practice oriented f-stops! With its power range of full 9 f-stops, the Expert D 250 Speed offers enough light for professional shoots, but is also widely reducible for fill-in use or images with a shallow depth of field.



HIGHLIGHTS

- // Ultra short flash duration times
- // Fast flash sequence - up to 22 flashes per second
- // Wide setting range of 9 f-stops
- // Integrated radio synchronization & remote control
- // freemask function for fast & easy cut-outs
- // Bright 300 W modeling light
- // Reflector quick-change automatic
- // Advanced thermo management for continuous operation
- // First-class workmanship
- // Optional battery operation via Power Max
- // Comprehensive accessory range
- // Developed and manufactured in Germany

Code No. 8390 // Expert D 250 Speed, Multivoltage

Compact flash unit with 250 J, 300 W halogen modeling lamp, glass protective dome, metal housing, adjustable 8 f-stop power range in 1/10 stops, with integrated active cooling and Multivoltage technology. With integrated radio receivers for Strobe Wizard Plus and freemask. Handle and tilt head are slidable and can be repositioned from the top to the bottom. L x W x H: 33 x 13.1 x 19.7 cm. Weight: 3.2 kg

WIFI REMOTE INSIDE!



Photo: Jan Kocovski / www.kocovski.de

HENSEL EXPERT D COMPACT FLASHES //

„STATE OF THE ART“ WITH TOP PERFORMANCE

A lot has happened since the introduction of the first Expert Compact Flash unit in 1988. Continuously improved upon and always ranking at the top regarding the latest attainable technical data, this new series shows what today's compact units are capable of. Design and function form an alliance of user-friendliness. Without looking, your fingers find the right position. Technology, features, and durability leave absolutely nothing to be desired. Just a few years ago, equipment with this level of performance was simply impossible.

WiFi REMOTE INSIDE!



HIGHLIGHTS

- // Very short flash duration up to 1/5,600 s and extremely fast flash sequences from 0.11 s
- // Adjustable 8 f-stop power range in 1/10 f-stops
- // Integrated radio remote receivers: Strobe Wizard Plus, freemask and WiFi Remote
- // High color temperature and output stability

- // Highest load capacity of electronics and flash tube
- // Off-grid operation in combination with Power Max L (optional accessory)
- // Adjustable and detachable, super compact panhead with integrated umbrella holder
- // USB port for software update
- // freemask function: cut-out masks in perfect quality while shooting



Our Expert D Kit offers can be found on the pages with kit offers.

A detailed overview of all features and technical data can be found at www.hensel.de under the applicable equipment category and at the end of the chapter on compact flash units. An Expert D application video can also be found at www.hensel.de



Code No. 8350 // Expert D 500, Multivoltage

Compact flash unit with 500 J, 300 W halogen modeling lamp, glass protective dome, metal housing, adjustable 8 f-stop power range in 1/10 stops, with integrated active cooling and Multivoltage technology. With integrated radio receivers for Strobe Wizard Plus, freemask and Profoto Air. Handle and tilt head are slidable and can be repositioned from the top to the bottom. L x W x H: 35 x 13.1 x 19.7 cm. Weight: 3.4 kg

Code No. 8360 // Expert D 1000, Multivoltage

Compact flash unit with 1000 J, equipped like Expert D 500. L x W x H: 38.5 x 13.1 x 19.7 cm. Weight: 3.9 kg

Scope of delivery: 1x compact flash unit with panhead, handle, 1x flash tube, plug-in style (9450420), 1x 300 W halogen modeling lamp (128), 1x glass protective dome (9454638), 1x transport cap (9456311) and each 1x power (121) and sync cord (122). Attention: radio transmitters are not included in delivery! (Optional radio transmitters: code no. 3950 / 3955 / 3965 / 3966)

HENSEL COMPACT FLASH KITS //

THE PERFECT START. EVERYTHING INCLUDED, EVERYTHING AVAILABLE, EVERYTHING AT VERY ATTRACTIVE KIT PRICES!

Most photographers are individualists and photography is an incredibly broad field. However, there is also the famous "common denominator".

A bag, a stand for each unit, and a selection of popular light formers - a start configuration you can build upon in any case. All equipment has an EH accessory diameter, all accessories are compatible - simply one system!

Take advantage of the extremely tightly calculated kit prices. The Hensel kit prices are the value-for-money winners in our range of products!

HIGHLIGHTS

- // Kits are value-for-money winners because they are extremely tightly calculated
 - // Everything in one bag, ideal for mobile use
 - // The kits consist of high-quality individual components.
 - // Optimum basic equipment for a variety of tasks
-
- // Easily expandable
 - // Bags are perfectly suited for content
 - // Best features and performance to go
 - // Sturdy casters and a well thought-out bag interior



**THE INNOVATIVE ONES!
EXPERT D KITS //**



**THE TOUGH ONES!
INTEGRA PLUS KITS //**

FOR BEGINNERS! INTEGRA MINI KIT //



HENSEL COMPACT FLASH KITS //

FOR BEGINNERS!

INTEGRA MINI KIT //

Code No. 5021 // Integra Mini 300 Kit

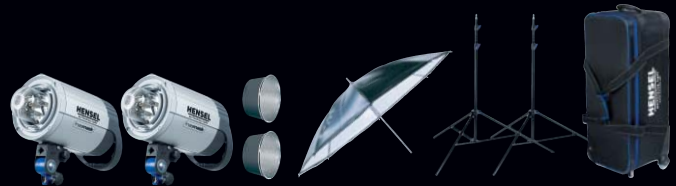
Includes: 2 x Integra Mini 300 (8370), 1 x 7" reflector (504), 1 x Softbox E 45 x 65 cm (4601), 2 x Integra aluminum stand, air-damped (202), 1x radio remote set Economy, 1 x Softbag VII De Luxe (4201). Delivery incl. power and sync cords.



THE TOUGH ONES! INTEGRA PLUS KITS //

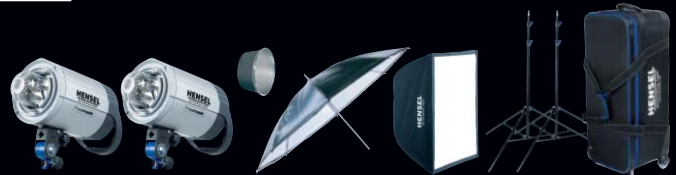
Code No. 50200 // Integra Plus Kit Basic

1x Integra 250 Plus (8814FM), 1x Integra 500 Plus (8815FM), 2x umbrella flood reflector (87), 1x Economy umbrella (3180), 2x aluminum stand III (200), 1x Strobe Wizard Plus transmitter (3950), everything in a 1x Softbag VII De Luxe (4201).
Delivery incl. power and sync cords.



Code No. 50300 // Integra Plus Kit Advanced

2x Integra 500 Plus (8815FM), 1x umbrella flood reflector (87), 1x Economy umbrella (3180), 1x Softbox Ultra E 45 x 65 cm (4601), 2x aluminum stand III (200), 1x Strobe Wizard Plus transmitter (3950), everything in a 1x Softbag VII De Luxe (4201).
Delivery incl. power and sync cords.



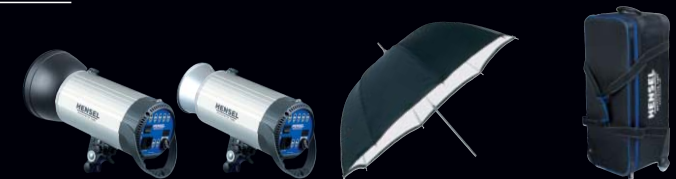
Code No. 50400 // Integra Plus Kit Pro

1x Integra 250 Plus (8814FM), 2x Integra 500 Plus (8815FM), 1x umbrella flood reflector (87), 1x 7" reflector (504), 1x 7" honeycomb grid (507), 1x Economy umbrella (3180), 1x Softbox Ultra E 80 x 100 cm (3080100), 3x aluminum stand III (200), 1x Strobe Wizard Plus transmitter (3950), everything in a 1x Softbag VIII De Luxe (4191).
Delivery incl. power and sync cords.



Code No. 50500 // Integra Plus Kit 2000

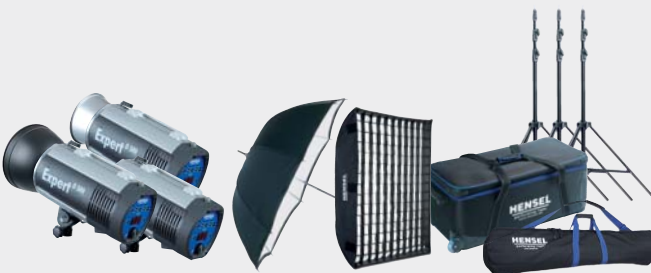
2x Integra 1000 Plus (8816FM), 1x umbrella flood reflector (87), 1x 7" reflector (504), 1x Master L umbrella white 106 cm (99), 1x Strobe Wizard Plus transmitter (3950), everything in a 1x Softbag VII De Luxe (4201).
Delivery incl. power and sync cords.



THE INNOVATIVE ONES! EXPERT D KITS //

Code No. 541115 // Expert D 1500 Kit

3x Expert D 500 (8350), 1 x Softbox Ultra E 80 x 100 cm with fabric honeycomb (380100HC), 1 x Master L umbrella white 106 cm (99), 1x umbrella flood reflector (87), 1 x 7" reflector (504), 3x aluminum stand VI (223), 1 x stand bag, large (3750), 1x Strobe Wizard Plus transmitter (3950), 1x Softbag VIII De Luxe (4191).
Delivery incl. power and sync cords.



Code No. 541110 // Expert D 1000 Kit

2x Expert D 500 (8350), 1x Softbox Ultra E 80 x 100 cm with fabric honeycomb (380100HC), 1x 7" reflector (504), 2x aluminum stand VI (223), 1x stand bag, large (3750), 1x Strobe Wizard Plus transmitter (3950), 1x Softbag VII De Luxe (4201).
Delivery incl. power and sync cords.



NEW

CITO 500 / THE WORLD'S FASTEST COMPACT FLASH OF THE WORLD //



Photo: Jörg Kyas / www.kyas.de

HIGHLIGHTS

- // 1/100,000 s flash duration, 40 flashes / second
- // Ultra-short flash duration times and rapid recycling times
- // Wide power range
- // Integrated radio sync and remote control
- // Highest reliability and product life time
- // Comprehensive accessory program
- // Sturdy and high-quality metal housing

CITO 500. THE UNCOMPROMISING TOOL FOR OUTSTANDING IMAGES.

Do you want to freeze fastest motion at maximum sharpness or take fast picture series? Maybe even both at the same time as often required for people, fashion, or product photography? Then, the new Hensel Cito 500 is the first choice: with flash duration times of up to 1/100.000s and a picture frequency of 40 flashes/sec maximum, it is the fastest compact flash worldwide. It achieves flash duration times of less than 1/20.000 s and more than 10 flashes/sec. already at a medium power setting: practical values for dynamic shootings! This flash helps you take fascinating images that stand out from the crowd.

Thanks to the special flash cutting technology used, exposures turn out much sharper than with conventional flash units, even in the higher power ranges. The proven Hensel EH quick-change system offers a wide range of versatile light shaping tools that let you master any photographic job. Furthermore, due to its integrated radio sync and remote control that includes the Freemask function for easy cut-outs, the Cito 500 is also thoroughly convenient. Each Cito 500 is thoroughly evaluated and tested for functionality. The quality of material and workmanship is outstanding and the quality all-metal housing convinces with its straight forward design as well as its look and feel. Based on its sturdy construction, the Cito 500 is ideally suited for extreme use like for professional rental or in the technical/science area. Each Cito 500 is delivered including test certificate and comes in its dedicated transport case, just like you would expect of such a first-class product.

FREEMASK, PERFECT CUT-OUTS //

FREEMASK – VERY FAST AUTOMATIC CUT-OUTS

WHAT IS FREEMASK?

freemask is the quickest and most exact solution to produce accurate and homogeneous cut-out masks in studio routine. Even the smallest structures, details, and transparencies are perfectly reproduced.

The mask is created during the picture taking process, and with the help of the Mask Integrator Software by Picture Instruments, the cut-out process is conveniently taken care of during post-production which allows for an efficient and fast workflow at highest quality. freemask was developed in cooperation with the Schoepe GmbH.



photos // daniel jaroschik // www.danieljaroschik.com

These flash units feature the integrated freemask:

Expert D / Integra Plus / Nova D / Nova DL / Porty L / Tria 24 SF

WHAT DO I NEED TO USE FREEMASK?

You need Hensel flash units with a freemask receiver (integrated or external), the freemask radio transmitter, and a digital camera with continuous exposure setting (min. 3 exposures per second).

The freemask transmitter is available for triggering of the units. The radio components that make different manufacturers' flash systems freemask-ready can also be bought separately.

You can also use the freemask flash equipment for normal applications, if no cut-outs are necessary. For greatest comfort in post-production, you need the Mask Integrator Software by Picture Instruments which not only cuts out the freemask pictures directly during photographing but can also place these onto any chosen new background.



FREEMASK //

HOW DOES FREEMASK WORK?

With the help of the continuous exposure setting of your camera and the freemask transmitter, two exposures are automatically made per shutter release: during the first exposure the motif is lit exactly according to your specifications (1), and during the second exposure only the background is lit (2).

This backlit shot is used to create a pixel-exact mask at postproduction.

(1)



(2)



photos // daniel jaroschik // www.danieljaroschik.com

WHAT IS MASK INTEGRATOR AND HOW DOES IT ADD TO MY WORKFLOW?



Mask Integrator by Picture Instruments offers everything you need to further process your images in one single program. Never before have you been able to cut-out pictures so fast and conveniently!

Get a 14-day trial version of Mask Integrator at www.picture-instruments.com.

Also, the activation code can be purchased there at a later time and a video tutorial on how to use the software is available, too.

A few function highlights:

- // Automated recognition and loading of new pictures whenever you connect your camera to your computer
- // Mask optimization of blacks and whites
- // Automated removal of shading elements on the edge of pictures
- // Use brushes to correct the shape of a mask
- // View the extracted picture during photographing in front of white, black, transparent, or any other background of your choice
- // Moving, scaling, and optimizing of the mask remains in effects during the whole session
- // Leafing through cut-outs and background pictures
- // Save cut-outs or whole folders with cut-outs by simply pushing a button

The freemask workflow is a cooperation of:

HENSEL
PERFORMING LIGHT

schoepe
fotografie

Picture
Instruments

» FOR YUMMY PICTURES «

// PHOTO - MATHIAS NEUBAUER - WWW.STUDIO-NEUBAUER.DE



// battery power supply

RELIABLE & INNOVATIVE TECHNOLOGY // BOUNDLESS FREEDOM

// POWER MAX L ¹⁷



MADE IN GERMANY

THE HENSEL POWER MAX L //

„THE PORTABLE POWER SOCKET“ THE SAFE BATTERY POWER SUPPLY FOR HENSEL COMPACT FLASH UNITS



HIGHLIGHTS

- // Flash capacity: up to 880 flashes at 250 J, 440 flashes at 500 J, 220 flashes at 1000 J etc.
 - // Suited for: max. 3 compact flash units (max. 2000 J)
 - // Can be used for wind machines, FL or LED lights and many other devices with continuous power consumption
 - // Flash sequence times: approx. 1,5 – 2x longer than with mains supply (Integra 500 Plus: 0.6 -2.5 s / Expert D 500: 0.2 -1.0 s)
-
- // Weight: 4,6 kg (incl. battery), spare Li-battery in cassette: 1,8kg
 - // Li-batteries are identical to the batteries of the Porty L system
 - // 2x Schuko-plugs 230V/50 Hz, resp. 2x NEMA Type 5 sockets 120V/60HZ
 - // Battery charging time: less than 1,5 h (empty battery with rapid charger)
 - // Modeling light: max. 2x 100 W with Expert D

More and more, professional compact flash units are also used outside the studio. Photographers increasingly work „on location“, often far away from a reliable power supply.

Though the popular shoe mount flashes are lightweight and convenient, their light output and light distribution are limited. Especially when working in bright sunlight or with larger softboxes, their output performance is often not sufficient. Many high-quality lightformers are not even available for these so called „speedlights“.

The solution: continue working with your equipment as usual and just bring along the power socket.

Power Max L is the ideal mobile power supply for current Hensel compact flash units! Due to the use of cutting-edge parts and a lithium battery, the Power Max L is one of the smallest and most lightweight units in its class. Only 4.6 kg including battery and very compact. Simply ideal for portable use. A capacity of up to 440 flashes at 500 J per battery charge is exemplary and allows uninterrupted work.

An integrated, easily legible load display allows optimized operation of the Power Max L. The battery can be exchanged quickly after use and is identical to the version in Porty L generators. It has a separate capacity indicator and charges completely in under 1.5 hours.

Compared to available individual compact flashes with rechargeable batteries, the weight of flash heads stays the same when using them with a Power Max L and existing equipment (reducing costs!). Thus time-tested compact flash units can also be used off-grid.

This device was developed especially for the latest Hensel compact flash units. You can connect up to 3 flash units of the Integra Mini, Integra Plus or Expert D series (combined up to 2000 J) simultaneously. Furthermore, it is possible to operate a Speed Max (the compact flash unit with the shortest flash duration times of up to 1/66,600 s) or up to two of the new C-Light D continuous light sources. An intelligent protective circuit prevents damage to the connected units.

THE NEW HENSEL POWER MAX L //



Code No. 1316620 // Power Max L 230 V

Power Max L, mobile power supply, 230V/50Hz
L x W x H: 19.8 x 22.5 x 21.5 cm. Weight: 4.6 kg

Code No. 1316120 // Power Max L 120 V

Power Max L, same as code no. 1316620, but with 2x NEMA Type 5 sockets 120V/60Hz

Scope of delivery: 1x Power Max L, with 1x lithium battery (1499)

Does not include charger. Charger: Code No. 5672



Example

Code No. 1316621 // Power Max L 230 V Kit

Power Max L, mobile power supply, 230V/50Hz with rapid charger and one additional battery.

Scope of delivery: 1x Power Max L with 1x lithium battery (1499), 1x rapid charger (5672), 1x Softbag P (4208) and 1x additional lithium battery (1499)

Code No. 1316121 // Power Max L 120 V Kit

Power Max L, battery power supply, 120V/60Hz with rapid charger and an additional battery.

Scope of delivery: 1x Power Max L incl. 1x lithium battery (1316121), 1x rapid charger (5672), 1x Softbag-P (4208) and 1x additional lithium battery (1499)



Code No. 5672 // Rapid charger for Power Max L and Porty L 600/1200

The microprocessor-controlled charger Lithium is designed for charging the lithium-ion battery (Code No. 1499). Multivoltage, use from 90 V - 240 V. The charging time for a completely empty Porty lithium-ion rechargeable battery pack is under 1.5 hours. The unit has an LED display indicating the level of charge.

Code No. 1499 // Battery for Power Max L und Porty L 600 / 1200

The lithium ion battery pack for Power Max L / Porty L 600 / Porty L 1200.

Code No. 4208 // Power Max L / Porty L bag (Softbag-P)

This bag protects equipment from climatic conditions, like light rain and sand. The flap on the front of the bag allows easy access to the battery drawer. The bag comes with a padded shoulder strap that has two pouches attached to it which let you store additional battery packs. Inside the bag's top cover is a closable net pouch, ideal for small parts.

Scope of delivery: 1x Power Max L / Porty L bag with 2x additional battery bags (4209) for batteries or the rapid charger

Code No. 4209 // Carrying bag for lithium battery or rapid charger

Special carrying bag for rechargeable batteries (1499) or the rapid charger (5672). Attaches directly to the Power Max L / Porty L bag (4208) thanks to its integrated strap.

Code No. 227 // Generator holder for Power Max L, Porty L or Nova D/DL generators

Take the generator off the ground and move it closer to the user.

At the same time, it serves as a weight to secure stands. Ideally suited for stand Code No. 223.

A detailed overview of all features and technical data is available at www.hensel.de under the applicable equipment category.

» FOR A GREAT PERFORMANCE «

// PHOTO - HEINER SEEMANN - WWW.GRAUTONSTUDIO.DE



//flash generators

CONSISTENT & PROFESSIONAL // WIDE RANGE OF FLASH HEADS



// TRIA FAMILY 21

// NOVA D FAMILY 24

// PORTY LITHIUM 26

// PORTY ACCESSORIES 28

Nova D 2400

MADE IN GERMANY

HENSEL TRIA GENERATORS, A FAMILY WITH MANY FACES //

ENTIRELY PROFESSIONAL FOR TOUGH EVERYDAY STUDIO USE

The Tria family covers the whole application range of studio generators. The entry-level Tria 24 SF with 2 sockets and symmetric output distribution serves as a basis for your studio and is also the price/performance winner among all Trias. If you value speed, the 1500 Speed with its fast flash sequence times and short flash duration times is the perfect choice for you. The Tria 3000 S is the "workhorse" Tria stable. Powerful, well-equipped and versatile.

If you want a wide range of features and like to draw on plenty of resources, then the Tria 3000 AS with its asymmetric power distribution, short flash and recharge times, and comprehensive set of features is the one for you. There are 2000 J at the two A sockets and 1000 J at the two B sockets available, that means 3000 J altogether. The power machine Tria 6000 S offers plenty of power and even a little more than may be necessary. Whichever Tria you decide on, you can rely on its dependability and sturdy technology at all times!



photo // www.debeos-studios.de

HIGHLIGHTS / TRIA 24 SF

- // The entry into the "Tria World" at an unbelievably low price
- // 2 flash outlets, symmetric power distribution, 2400 J
- // Plugmatic - safety switch for changing plugs
- // Integrated radio receivers Strobe Wizard Plus and freemask

- // Sturdy metal housing, comfortable handle with integrated spare fuses
- // Hensel user logic - most switches and control elements have the same names and positions. Work without changing your routine!
- // APD - internal power reduction when reducing the power
- // Large, easy-to-see 7-segment performance display

A detailed overview of all features can be found at www.hensel.de under the appropriate equipment category and at the end of the chapter on generators.



Code No. 4370F // Tria 24 SF (for 230 V)

Tria 24 SF generator with 2400 J, metal housing, 20-way plug in long and integrated radio receivers Hensel Strobe Wizard Plus and freemask. Two connectors, max. 650 W modeling light per socket, power output adjustable via control dial in 1/10 step increments. Only for 230 V power systems. L x W x H: 34,8 cm x 19,7 cm x 28,6 cm. Weight: 7.5 kg

Scope of delivery: 1x generator with 1x power and sync cord each.

Attention: Radio transmitters are not included in delivery!
(Optional radio transmitters: code no. 3950 / 3955)

TRIA 1500 S, 3000 S AND 6000 S //



Code No. 3515 // Tria 1500 S (for 230 V)

Tria 1500 S generator with 1500 J, metal housing, 20-way plug in long, 3 connectors, max. 650 W modeling light per socket, power output adjustable via control dial in 1/10 step increments and separately adjustable modeling light. Only for 230 V power systems.

L x W x H: 34.5 x 19.5 x 28.5 cm. Weight: 8 kg

Scope of delivery: 1x generator with 1x power and sync cord each.



Code No. 3530 // Tria 3000 S (for 230 V)

Tria 3000 S generator with 3000 J, metal housing, 20-way plug in long, 3 connectors, max. 650 W modeling light per socket, power output adjustable via control dial in 1/10 step increments and separately adjustable modeling light. Only for 230 V power systems.

L x W x H: 34.5 x 19.5 x 28.5 cm. Weight: 9.3 kg

Scope of delivery: 1x generator with 1x power and sync cord each.

Code No. 3560 // Tria 6000 S (for 230 V)

Tria 6000 S generator with 6000 J, metal housing, 20-way plug in long, 3 connectors, max. 650 W modeling light per socket, power output adjustable via control dial in 1/10 step increments and separately adjustable modeling light. Only for 230 V power systems.

Please note that the full capacity can only be listed with regard to heads that match this capacity!
L x W x H: 34.5 x 19.5 x 44 cm. Weight: 17.1 kg

Scope of delivery: 1x generator with 1x power and sync cord each.

Code No. 3660 // Tria 6000 S, Bi-voltage

Tria 6000 S generator, bi-voltage (120 V/60 Hz and 230 V/50 Hz), otherwise identical to code no. 3560.

Scope of delivery: 1x generator with 1x power and sync cord each.

HIGHLIGHTS

TRIA 1500 S / 3000 S / 6000 S

- // Turbo Ignition, the ignition with a click! Safely fires even old and spent flash tubes. Also an advantage when working with different heads, spots and Megalights connected to one generator
- // 3 switchable flash outlets, symmetric power distribution, 1500 J, 3000 J or 6000 J
- // Self-luminous control panel in darkness
- // Separately adjustable modeling light

- // BIAS - Modeling light adjustment for generators of different strength
- // Sturdy metal housing, comfortable handle with integrated spare fuses



A detailed overview of all features can be found at www.hensel.de under the appropriate equipment category and at the end of the chapter on generators.



Design
Award
Winner

TRIA 1500 SPEED / 3000 AS FLASHLINK //



Code No. 3631 // Tria 3000 AS, Multivoltage

Tria 3000 AS, generator with 3000 J, metal housing, symmetric or asymmetric power distribution, 4 flash outlets, power output adjustable via control dial in 1/10 step increments, large output range of 7.6 f-stops, for 20-pin long plug. Multivoltage 120V/60 HZ and 230 V/50 HZ.

Scope delivery: 1x generator with 1x power and sync cord each.



HIGHLIGHTS / TRIA 3000 AS

- // Free asymmetric power distribution
- // Short flash duration and recycling times
- // Output range in 7.6 f-stops, adjustable in 1/10 stops
- // 3000 J max. output on one socket possible

- // 2000 J at the two A sockets, 1000 J at the two B sockets (3000 J altogether), can be controlled separately
- // BIAS for modeling light adjustment
- // Radio controllable via Flash Link (optional)

A detailed overview of all features can be found at www.hensel.de under the appropriate equipment category and at the end of the chapter on generators.

HIGHLIGHTS / TRIA 1500 SPEED

- // Turbo Ignition, the ignition with a click! Safely fires even old and spent flash tubes. Also an advantage when working with different heads, spots and Megalights connected to one generator.
- // Short flash duration times
- // Short flash recycling times
- // Separately adjustable modeling light



Code No. 3500 // Tria 1500 Speed (for 230 V)

Tria 1500 Speed, generator with 1500 J, metal housing, symmetric power distribution and 3 flash outlets, power output adjustable via control dial in 1/10 step increments, for 20-way plug, faster flash duration and recycling times. Only for 230 V power systems.

Scope delivery: 1x generator with 1x power and sync cord each.

HENSEL NOVA D / DL POWER PACKS //

FAST, COMPACT AND STRAIGHTFORWARD

Nova D and Nova DL equipment only differs in one point:

Nova D units have round flash plugs, e.g. like the Party series, and the Nova DL units have a 20-way long plug connector. Otherwise, the units are technically identical. The DL versions allow you to directly connect older Hensel flash heads and thus are the solution for many studios that have a lot of Hensel flash technology but want smaller and more lightweight generators which have faster flash sequences, and consequently shorter flash duration times and a more convenient operation. The Nova D units are of special interest to Party users who are using a lot of accessories with round plugs.



HIGHLIGHTS

- // Highly reliable easy operation
- // Fast flash recycling times up to 0.3 s and flash durations up to 1/4,500 s
- // Integrated radio remote receivers: Strobe Wizard Plus and freemask
- // Symmetrical and asymmetrical power distribution, adjustable 8 f-stop power range in 1/10 f-stops

- // Output regulation via capacity switching and voltage control
- // Unique recharge logic for gentle treatment of the rotating charging capacitors
- // Multivoltage (100-240 V/50-60 Hz) high performance switch power supply
- // Modeling light up to 650 W for each socket: on, off, full, prop, autored
- // freemask function: cut-out masks in perfect quality while shooting
- // Small, lightweight flash heads with reflector quick-change (optional)



Code No. 3612 // Nova D 1200

Nova D generator with 1200 J, round sockets and integrated radio receivers Hensel Strobe Wizard Plus, freemask. Two connectors for flash heads, max. 650 W modeling light per socket. Sturdy metal housing. L x W x H: 26 x 19.5 x 24.5 cm. Weight: 6.6 kg

Code No. 3624 // Nova D 2400

Nova D generator with 2400 J, round plug sockets and integrated radio receivers Hensel Strobe Wizard Plus, freemask. Two connectors for flash heads, max. 650 W modeling light per socket. Sturdy metal housing. L x W x H: 26 x 19.5 x 28.3 cm. Weight: 7.8 kg

Scope of delivery for Nova generators:

1x Generator with each 1x power and sync cord. Attention: radio transmitters are not included in delivery! (Optional radio transmitters: Code No. 3950 / 3955)



A detailed overview of all features and technical data can be found at www.hensel.de under the applicable equipment category and at the end of the chapter on generators.

A Nova D application video can also be found at www.hensel.de

HENSEL NOVA D / DL POWER PACKS //

Based on innovative switch-mode power supply technology and capacity switching, these units, available as 1200 J and 2400 J models, deliver outstanding technical data and highest reliability. Despite their comparatively small dimensions, they offer latest technology and full operation.

Between 6 and, even at full output, 2 flashes can be generated per second. Furthermore, there are short flash duration times of up to 1/4,500 s and a wide output range of 8 f-stops in 1/10 steps. Thanks to multivoltage technology, the Nova D/DL generators can be used worldwide.

Choose to work with symmetrical or three-stage asymmetrical power distribution. The units' logical set-up and ergonomic user elements ensure ease of use. Modern design, latest technology, and decades of experience in construction and manufacturing of professional light systems come together in this Nova D/DL series.



Code No. 361212 // Nova DL 1200

Nova DL generator with 1200 J, 20-way plug sockets and integrated radio receivers Hensel Strobe Wizard Plus, freemask. Two connectors for flash heads, max. 650 W modeling light per socket. Sturdy metal housing. L x B x H: 26 x 19.5 x 24.5 cm. Weight: 6.6 kg

Code No. 362412 // Nova DL 2400

Nova DL generator with 2400 J, 20-way plug sockets and integrated radio receivers Hensel Strobe Wizard Plus, freemask. Two connectors for flash heads, max. 650 W modeling light per socket. Sturdy metal housing. L x B x H: 26 x 19.5 x 28.3 cm. Weight: 7.8 kg

Scope of delivery for Nova generators:

1x Generator with each 1x power and sync cord. Attention: radio transmitters are not included in delivery! (Optional radio transmitters: Code No. 3950 / 3955)

A detailed overview of all features and technical data can be found at www.hensel.de under the applicable equipment category and at the end of the chapter on generators.



HENSEL PORTY L 1200 MOBILE BATTERY POWER PACK //

„BOUNDLESS FREEDOM“
THE SMALLEST AND MOST
LIGHTWEIGHT BATTERY
FLASH GENERATOR IN THE
TOP CLASS.

The Party by the inventor of the “Party.” The name Party has become synonymous with battery-powered generators and rightly so because they offer best performance in nearly all areas. Especially the Party Lithium generators are winners in several disciplines at once! They are much lighter, faster and smaller than comparable units with lead-gel battery and also offer significantly more flashes!



photo // natalia luzenko

The recharge and flash duration times are top-notch and the value-for-money ratio is unparalleled. Thanks to their optional AC Party L power supply drawer, they are the first Portys ever to perfectly close the gap between indoor and outdoor applications, and thus can be used as full-fledged studio generators, and with modeling lights of up to 650 W per head. Add to this the double radio system: Hensel Strobe Wizard Plus and freemask are integrated. You can freely select which radio system you want to use!

HENSEL PORTY L //



HIGHLIGHTS

- // Battery operation with compartment for Li-battery or operation on real power supply with optional AC power supply drawer
 - // Symmetrical and asymmetrical power distribution, adjustable over a 7 f-stop power range in 1/10 f-stops
 - // Fastest flash recycling time 0.2 s and flash durations up to 1/5,200 s
 - // Integrated radio remote receivers: Hensel Strobe Wizard Plus, and freemask
-
- // Considerably faster, smaller, and lighter than units with lead-gel cell battery, and yet more powerful
 - // Only 5.9 kg total weight with 1200 J power
 - // Capacity adjustment via capacity switching and voltage control.
 - // Unique recharge logic for gentle treatment of the rotating charging capacitors
 - // Approx. 220 flashes at 100% capacity
 - // freemask function: cut-out masks in perfect quality while shooting



Code No. 4962 // Porty L 1200 generator

Battery generator with 1200 J, round sockets and integrated radio receivers Hensel Strobe Wizard Plus, freemask.

Scope of delivery: 1x generator incl. 1x lithium battery (1499), 1x Softbag-P transport bag (4208) and 1x sync cord.

Attention: delivery does not include radio transmitter and charger!

Optional radio transmitters: Code No. 3950 / 3955, charger: Code No. 5672
L x W x H: 19.8 x 22.5 x 21.5 cm. Weight: 5.9 kg

Code No. 4965 // AC Porty L power supply drawer

Simply insert the AC power supply drawer in place of the battery, and the battery generator turns into a full-fledged studio generator. This allows you to use Porty heads with 12 V modeling lights and heads with modeling lights of up to 650 W (even simultaneously). All performance values are 100% maintained – genuine mains operation! Worldwide use due to multivoltage technology.

Scope of delivery: 1x AC power supply, 1x power cord and 1x firmware CD.



TIPA Award 2009

A detailed overview of all features can be found at www.hensel.de under the applicable equipment category or at the end of the chapter on generators.

HENSEL PORTY L KITS & ACCESSORIES //



Code No. 7024962 // Porty L 1200 Kit

1x Porty L 1200 (4962), 1x EH Pro Mini 1200 P* (3604), 1x rapid charger for Porty Lithium (5672), 1x 7" reflector (504), 1x aluminum stand III (200) and 1x radio transmitter (3950) and 1x Softbag VII (4201). Radio receivers for Strobe Wizard Plus and freemask.

* EH Mini P delivery includes:

1x flash tube (9450135), 1x modeling lamp 60 W, Halogen Energy Saver (1851), 1x glass protective dome (9454650), 1x transport cap (9456311), 1x flash head cable 5 m (5794)

ACCESSORIES FOR PORTY L

Code No. 5672 // Rapid charger for Porty L 600/1200 and Power Max L

The microprocessor operated rapid charger for charging the Porty L / Power Max L battery (Code No. 1499). Multivoltage, use from 90 V - 240 V. Charging time to full charge is under 1.5 h (depending on age and capacity of battery), 80% of the charge capacity can be attained after approximately 45 minutes of charging. All units have a charge indicator.

Code No. 1499 // Battery for Porty L 600 / 1200 and Power Max L

Lithium ion battery pack for Porty L 600 / 1200 and Power Max L

Code No. 4208 // Porty L / Power Max L bag (Softbag-P)

This bag protects equipment from climatic conditions, like light rain and sand. The flap on the front of the bag allows easy access to the rechargeable battery pack. The bag comes with a padded shoulder strap that has the two battery bags attached to it. Inside the bag's top cover is a closable net pouch for small parts. Scope of delivery: 1x Porty L / Power Max L bag with 2x additional battery bags (4209) for batteries or the rapid charger

Code No. 4209 // Transport bag for lithium battery or rapid charger

Special transport bag for batteries (1499) or the rapid charger (5672). Attaches directly to the Porty bag (4208) thanks to its integrated strap.

Code No. 227 // Generator holder for Porty L, Power Max L or Nova D/DL generators

Take the generator off the ground and move it closer to the user. At the same time, it serves as a weight to secure stands. Ideally suited for the stand Code No. 223.

Code No. 5782 // Adapter cable for 20-way flash plug on Porty

This cable lets you connect Hensel flash heads with 20-way plug to the circular Porty connector. The modeling light function is retained in connection with an AC power supply drawer! For questions concerning adaptation possibilities of third-party devices, please contact your Hensel consultant or our headquarters in Wuerzburg.



Code No. 5672



Code No. 1499



Code No. 4208 / Code No. 4209



Code No. 227



Code No. 5782

» FROM ZERO TO ONE HUNDRED IN 2.1 s – PORTY L 1200 «

// PHOTO - ROBERT HOERNIG - WWW.ROBERTHOERNIG.COM



// hensel product family

// COMPACT FLASHES



// INTEGRA MINI 300 // INTEGRA MINI 600



// INTEGRA 250 PLUS // INTEGRA 500 PLUS // INTEGRA 1000 PLUS



// EXPERT D 250 SPEED // EXPERT D 500 // EXPERT D 1000



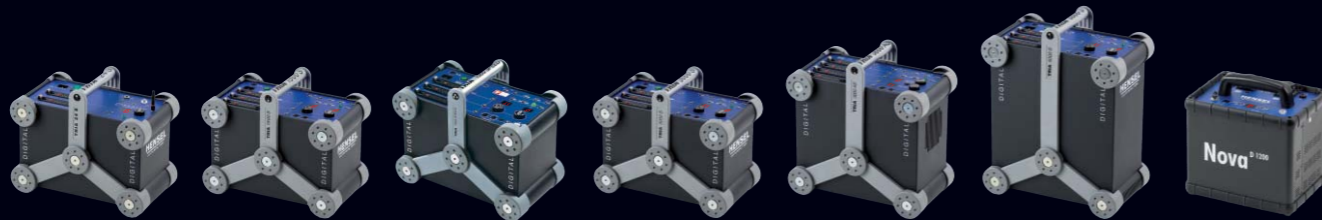
// CITO 500



// POWER MAX L

// BATTERY POWER SUPPLY

// FLASH GENERATORS



// TRIA 24 SF // TRIA 1500 S // TRIA 1500 SPEED // TRIA 3000 S // TRIA 3000 AS // TRIA 6000 S // NOVA D 1200

// FLASH HEADS



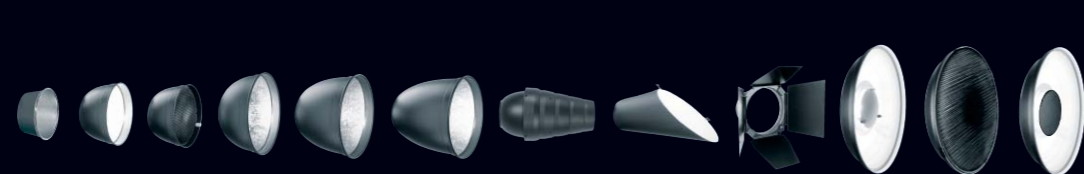
// EH PRO 3000 // EH PRO 6000 // EH MINI I // EH MINI I SPEED // EH MINI P // EH MINI P LED SPEED

// SPECIAL FLASH HEADS



// FLASH BOX // LIGHTBAR 130 // AUTOLIGHTS / MEGALIGHTS // LINEAR FLASH HEADS / LIGHTSTICK

// LIGHT FORMERS



// REFLECTORS



// UMBRELLAS

// EH SPEEDLIGHT ADAPTER

// BATTERY POWERED FLASH GENERATOR



// NOVA D 2400 // NOVA DL 1200 // NOVA DL 2400 // PORTY L 1200

// REMOTE



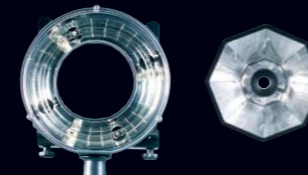
// WiFi REMOTE

// RADIO REMOTE CONTROL



// STROBE WIZARD PLUS

// SPOTS



// RINGFLASH RF 3000 P/PM-XS/XS // OCTABOX SUNHAZE



// F-SPOT 3000/6000



// STARSPOT 1500 P/3000



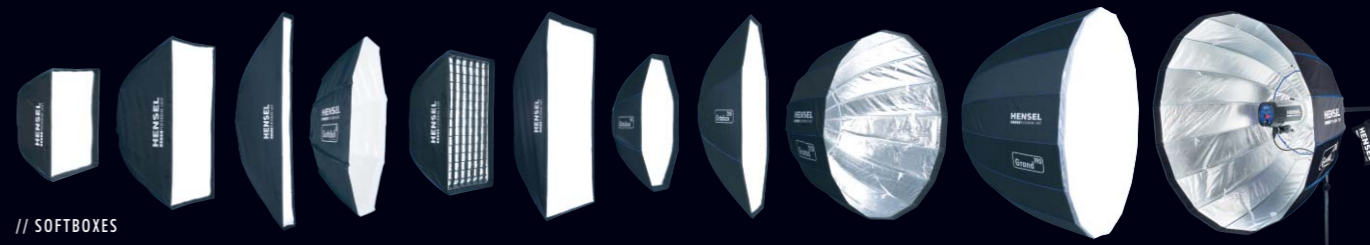
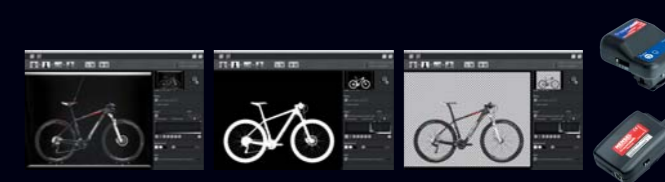
// SUPERSPOT 3000/6000

// CONTINUOUS LIGHT



// C-LIGHT 1000 // C-LIGHT D // LIGHTBAR 130 LED

// FREEMASK HARD- AND SOFTWARE



// SOFTBOXES

// BOUNCE ADAPTER

MADE IN GERMANY

// WWW.HENSEL.DE

Based on the extend of our product range, we are not able to show each individual product here!

//flash heads

EXTREMELY FAST // CONSISTENT TECHNOLOGY // WIDE RANGE OF LIGHT FORMERS

// EH PRO HEADS 33

// EH MINIⁱ HEADS 34

// EH MINI P HEADS 35

// RING FLASH 37



HENSEL EH PRO HEADS //

THOROUGHLY PROFESSIONAL AND EXTREMELY STURDY CONSTRUCTION!

The EH Pro line by Hensel. The flash tube / modeling light positions match to the highest degree. Optimum light performance, flash tube longevity, and a steady color temperature are also characteristics of these heads.

Contained by a 2.6 mm thick metal housing made from a solid aluminum profile. The mechanic make alone will excite you. Also typical for Hensel, the reflector can be attached and removed in any position and / or can be turned by 360°.



HIGHLIGHTS

- // Housing made of aluminum drawn profile, 2.6 mm thick
- // Optimized tilt head with integrated umbrella holder
- // Plug-in flash tube
- // Up to 6000 J performance

- // Modeling light up to 650 W
- // Reflector quick-change automatic, 360° for EH
- // On/off switch for modeling lamp on the head



EH Pro Heads for Studio Generators with 20-Way Plug In (Long)

Code No. 3599 // EH Pro 3000 / Multivoltage

Standard head for Hensel generators up to 3000 J. High capacity, with active fan cooling.

Scope of delivery: 1x Head with flash tube, plug-in style (9450135), 1x 650 W halogen modeling lamp (129), 1x glass protective dome (9454650) and 1x transport cap (9456311).

Delivery includes 5m flash cord with fixed 20-way plug (long).

Code No. 3603 // EH Pro 6000 / Multivoltage

High-performance head for Hensel generators up to 6000 J. Highest capacity, with active fan cooling.

Scope of delivery: 1x Head with flash tube, plug-in style (9450143), 1x 650 W halogen modeling lamp (129), 1x glass protective dome (9454650) and transport cap (9456311).

Delivery includes 5m flash cord with fixed 20-way plug (long).

Upon request, the EH Pro 3000 (as Code No. 359918) can also be delivered with a round plug!

Extension cables (5, 7 and 10 m) are listed in our price list. Other lengths are available upon request!

Overview of available glass protective domes for EH Pro:

- Code No. 9454650 // Glass protective dome, clear, uncoated, spare part
- Code No. 9454651 // Glass protective dome, clear, single coated
- Code No. 9454652 // Glass protective dome, clear, double coated
- Code No. 9454653 // Glass protective dome, matte, uncoated, spare part
- Code No. 9454654 // Glass protective dome, matte, single coated
- Code No. 9454655 // Glass protective dome, matte, double coated

A detailed overview of all features and technical data can be found at www.hensel.de in the applicable equipment category and at the end of the chapter on flash heads.

HENSEL EH MINIⁱ HEADS //

Small and extremely durable, these heads are cutting-edge technology. In connection with the Nova D and Nova DL generators, a data transfer takes place between head and generator. This ensures shortest recharge times and highest operational safety. The removable flash head cable guarantees small packing dimensions and greater flexibility during connection. Whether they are connected to a Party, a Nova D/DL, or any other Hensel generator, you are always best equipped with the EH Miniⁱ heads. The shortest flash duration times are attainable with the EH Miniⁱ Speed Head.



HIGHLIGHTS

- // Choose to use with round or long plug
- // Removable flash head cable (can be used as an extension cable)
- // Plug-in flash tube
- // Up to 3000 J capacity (depending on head)

- // Modeling light up to 650 W halogen
- // Smallest packing dimensions
- // Speed heads for shortest flash duration times
- // Reflector quick-change automatic, 360° for EH
- // High capacity flash cord with optimized internal resistance for best performance

A detailed overview of all features and technical data is available at www.hensel.de in the appropriate equipment category and at the end of the chapter on flash heads.

EH Miniⁱ Heads for studio generators and Party*

Code No. 3635 // EH Miniⁱ, Multivoltage

Standard head for all Hensel generators* up to 3000 J.

Highest load capacity, with active cooling and intelligent equipment management.

Scope of delivery: 1x Head with 1x flash tube, plug-in style (9450135), 1x 650 W halogen modeling lamp (129), 1x glass protective dome (9454650) and 1x transport cap (9456311).

Code No. 3636 // EH Miniⁱ Speed, Multivoltage

Speed head with extra short flash duration times for Hensel generators* up to 3000 J.

Highest load capacity, with active cooling and intelligent equipment management.

Scope of delivery: 1x Head with 1x flash tube, plug-in style (9450137), 1x 650 W halogen modeling lamp (129), 1x glass protective dome (9454650) and 1x transport cap (9456311).

When ordering, please state the generator type (round or long plug in) for which the head is needed.

The head will be delivered with your choice of a 5m connector cable (5794)

for round sockets or a 5m connector cable (7911) für long plug in sockets.

Attention: Unless otherwise specified, delivery includes a 5m cable with round plug!

*The modeling light is not available when the head is used on a battery-powered Party generator (only when used with an AC Party L power supply drawer).

HENSEL EH MINI P HEADS //

EH MINI P AND MINI P SPEED HEADS FOR PORTY GENERATORS



Code No. 3604 // EH Mini P for Porty

Standard head for all Hensel Porty generators

Highest load capacity head with 1x flash tube, plug-in style (9450135), 1x 60 W halogen modeling lamp (1851), 1x glass protective dome (9454650) and 1x transport cap (9456311). **Delivery** includes 5 m flash cable with round plug.

Code No. 3607 // EH Mini P Speed for Porty

Speed head with extra short flash duration times for all Hensel Porty generators

Highest capacity head with 1x flash tube, plug-in style (9450137), 1x 60 W halogen modeling lamp (1851), 1x glass protective dome (9454650) and 1x transport cap (9456311). **Delivery** includes 5 m flash cable with round plug.

Code No. 3001254 // EH Mini P LED Speed

With 40 W LED modeling light (equivalent to 300 W Halogen)

Highest capacity head with 1x flash tube, plug-in style (9450137), 1x glass protective dome, matt (LED version, 9454659) and 1x transport cap (9456311). **Delivery** includes 5 m flash cable with round plug (5794)

Flash head and extension cables (5, 7 and 10 m) are listed in our price list. Special lengths are available upon request at any time!

Overview of protective domes for EH Mini Heads:

- Code No. 9454650 // Glass protective dome, clear, uncoated, spare part
- Code No. 9454651 // Glass protective dome, clear, single coated
- Code No. 9454652 // Glass protective dome, clear, double coated
- Code No. 9454653 // Glass protective dome, matte, uncoated, spare part
- Code No. 9454654 // Glass protective dome, matte, single coated
- Code No. 9454655 // Glass protective dome, matte, double coated



A detailed overview of all features and technical data is available at www.hensel.de in the appropriate equipment category and at the end of the chapter on flash heads.

HENSEL RING FLASHES RF 3000 //

photo // martin siebenbrunner // www.martinsiebenbrunner.com

Both ring flashes attain top values regarding load capacity and extremely short flash duration times. A special multi-pole flash tube and the expertise of a quarter of a century of experience in ring flash construction are at the basis of this. The matching and extensive accessory system also plays a part in making the Hensel ring flashes irresistible. The results speak for themselves and convince without any ifs and buts. The housing is made of a special fiber-reinforced plastic resulting in very low weight but high stability and breaking strength.

HIGHLIGHTS

- // Shortest flash duration times due to multi-pole flash tube
- // Large inner diameter of 10 cm offers freedom of choice when selecting lenses
- // Accessory line for extended applications
- // Weight approx. 1.8 kg only

- // Extremely sturdy plastic housing
- // Excellent handling
- // High light output
- // Wide-angle lighting
- // Slidable camera mount (sideways and vertical)



Code No. 3410 // Ring Flash RF 3000 P/PM-XS, with round plug

Capacity of up to 3000 J, incl. individually adjustable camera holder, multipolar special flash tube, clear protective glass and handle. Fixed flash cord and flash tube. Weight approx. 1.8 kg only
Dimensions without handle (L x W x D): 20.2 x 32.5 x 6.1 cm, depth with camera mount 22 cm
Opening for lens: Ø 10 cm.

Code No. 3430 // Ring Flash RF 3000-XS, with 20-way plug long

Otherwise identical to Code No. 3410



Code No. 8611 // 22" Beauty Dish for Ring Flash

Soft, wide-angle light ensures shadow free lighting with typical ring flash reflections. The light distribution becomes substantially softer. The „beauty light“ for the ring flash. All the good traits of a beauty dish reflector combined with the classic characteristics of a ring flash!

Code No. 3440 // Standard reflector for Ring Flash

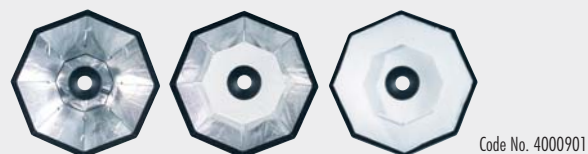
With a built-in deflector, an interior coated in white, and including a honeycomb. The honeycomb is easy to remove so that you can switch between the slightly softer light of the reflector and the more directional light in combination with the honeycomb.

Code No. 9901 // Softbag round for standard reflector

Softbag round for safe storage of the standard reflector for ring flashes

Code No. 9454362 // Protective glass, matte

The alternative to the factory-mounted protective glass. The matt protective glass offers greater light diffusion and slightly softer light characteristics.



Code No. 4000901

Code No. 4000901 // Octa Sunhaze RF 90, Softbox for Ring Flash

This box should not be missing from your next fashion shoot! Softer, enveloping light from the edges, mixed with harder, more directional light from the center. Brightening and guiding light in one! The typical ring flash characteristics are retained but the light distribution becomes much softer. The lightweight fabric construction makes it extremely easy to handle. All diffusers can be removed which allows you to vary the quality of light. Delivery includes diffusers and back part.

A detailed overview of all features and technical data can be found at www.hensel.de in the applicable equipment category and at the end of the chapter on flash heads.

// special flash heads

DEDICATED LIGHT SOURCES FOR DEMANDING JOBS //



- // FLASH BOX 38
- // LIGHTBAR 38
- // AUTOLIGHT 39
- // TABLE TOP AUTOLIGHTS 39
- // CIRCULIGHT 40
- // LINEAR FLASH 41
- // LIGHTSTICK 41

HENSEL FLASH BOX //



HENSEL'S FINEST LIGHT ON THE WHOLE SURFACE

Because of very even distribution light on the whole surface of these boxes, they are perfect for the illumination of glossy surfaces. The compact dimensions and the evenly distributed light make them also ideal for table top and object shots. The big Flash Boxes are perfect as light sources for reproduction use. All Flash Boxes have a solid metal housing with perspex pane and modeling light.

Code No. 57 // Flash Box 30 x 50 cm, capacity of up to 3500 J, with 20-way plug
Dimensions: W x L x D: 30 x 50 x 16.5 cm, weight: 5.2 kg.

Scope of delivery: Flashbox incl. modeling light (3 x 40 W), pivoting holder for stand/shear mounting and 5 m fixed flash cable.
Upon request the Flash Box can be delivered with a connector for round plugs (Code No. 5718)

HENSEL LIGHTBAR 130 //

A slimline, clear light for even lighting and gradients using a tunnel diffusor. Cleanly definable shadows can be achieved using the precise adjustment of the flaps/ wings. The outstanding pluses include mirroring of lines, emphasis of edges and contours. You can use several light bars side by side with no light interruption.

Code No. 9931 // Hensel Lightbar 130, Multivoltage
capacity of up to 3500 J, modeling light (4x 150 W), incl. tilt-bracket for mounting.
L x W x H: 130 x 13 x 22.8 cm, Weight: 9.1 kg, detachable flash cable 5 m

The Hensel Lightbar will be delivered with your choice of flash connector, either for round sockets (code no. 5794 or, with appropriate cable, for 20-way sockets long (Code No. 7911). Please specify the desired type on your order.

Code No. 9518411 // Barn doors for Lightbar 130
Total lengths over 20 m are also possible, please ask!



TABLE TOP AUTOLIGHT AUTOLIGHT / MEGALIGHT //

Very homogeneous

Minimal light fall-off despite its large surface!

Very lightweight

Only ca. 13 kg per 1.3 x 2 m element.

Very sturdy

Alu profiles and special connection parts ensure sturdiness.

All parts of the frame are made of metal!

Very convertible

Autolights (not Table Top) can be adjusted in length by 2 m.

Possible Autolight lengths are 2 m, 4 m, 6 m, 8 m, 10 m and 12 m. The width remains at 1.3 m.

Megalights can be adjusted in length by 1.3 m. The width remains at 2 m.

Possible Megalight lengths are 2.6 m, 3.9 m, 5.2 m, 6.5 m, 7.8 m, 9.1 m and 10.4 m.

A new front diffuser, new side covers (number depends on length of extension),

and new support rails are needed after each extension!

Very flexible

Lighting can be varied due to the integrated, turnable linear flash.

If necessary, the linear flash units can also be used separately.

Very handy

Different trolleys and mechanical and motorized bogies help to adapt the lamps to different application requirements.



The flexible Megalight system by Hensel. The basic element has a size of 1.3 x 2 m and requires a linear flash. It can be expanded to almost any size using appropriate extensions. Additional elements can be added to an Autolight's length and to a Megalight's width. High efficiency and even lighting are their outstanding properties. The linear flash can be rotated which opens up many different options from a gradient to a more center-weighted, contrasty lighting. Direct or indirect flashing is possible. Indirect flashing via the rear prism results in an extremely even illumination



Despite their large surfaces, Autolights und Megalights provide extremely brilliant, contrasty lighting! The Megalights can be mounted in different ways ranging from simple, mechanic suspensions with spring-roll cables to remote-controlled, motorized bogies that can swivel in any direction.

You can find further information in our accessory catalog or at www.hensel.de
Please request our delivery times before ordering!

Code No. 903 // Table Top Autolight, large, extremely flat construction!

Extremely flat version of the Autolight. Just 45 cm high. Ideal for low ceilings.

This version cannot be lengthened! L x W x H: 200 x 130 x 45 cm (for 1 Linear Flash)

Code No. 891 // Autolight 1.3 x 2 m, Basic Version

Autolight standard version. 78 cm high. L x W x H: 200 x 130 x 78 cm (for 1 Linear Flash)

Code No. 892 // Autolight 1.3 x 2 m, Extension

Extends any Autolight by 2 m. Delivery does not include front diffuser since this must be ordered separately depending on the required final size.

L x W x H: 200 x 130 x 78 cm (for 1 Linear Flash)

Code No. 897 // Autolight 1.3 x 4 m (for 2 Linear Flash units)

Code No. 898 // Autolight 1.3 x 6 m (for 3 Linear Flash units)

Code No. 899 // Autolight 1.3 x 8 m (for 4 Linear Flash units)

Additional sizes available upon request. See price list for mounting rails.

Code No. 926 // Wheel Carriage for Autolight

This lets you use the Autolight standing in an upright position (movable). Simple and fast mounting.

4x smoothly moving plastic rollers guarantee good mobility and a sturdy stand.

Suitable for Megalights with a maximum height/length of 4 m.

Code No. 796 // Frame for Autolight

Fast and easy installation with a Velcro strip. 100 per cent perfect edges with antireflection!

Code No. 927 // Megalight 2 x 2.6 m, Basic Version

Please note: Two Linear Flash units are required! L x W x H: 260 x 200 x 78 cm

Code No. 950 // Megalight 1.3 x 2 m, Extension

Extends any Megalight by 1.3 m. Delivery does not include front diffuser since this must be ordered separately depending on the required final size.

L x W x H: 200 x 130 x 78 cm

Code No. 928 // Megalight 2 x 3.9 m (for 3 Linear Flash units)

Code No. 929 // Megalight 2 x 5.2 m (for 4 Linear Flash units)

Code No. 948 // Megalight 2 x 6.5 m (for 5 Linear Flash units)

Additional sizes available upon request. See pricelist for mounting rails.

Code No. 799 // Wheel Carriage for Megalight

This lets you use the Autolight standing in an upright position (movable). Simple and fast mounting.

4x smoothly moving plastic rollers guarantee good mobility and a sturdy stand.

Suitable for Megalights with a maximum height/length of 3.9 m.

Delivery of Table Top Autolights, Autolights and also Megalights includes:

The frame, the outer cover (black/silver), the front diffuser, the prism and the necessary small parts for mounting (screws, corner connectors, Velcro strips etc.). Linear Flash units and possible mounting rails always have to be ordered separately. A new front diffuser is required when extending existing systems. Please ask your sales consultant.

CIRCULIGHT //

THE NEW AND SELF-PROPELLED 360° CIRCULIGHT

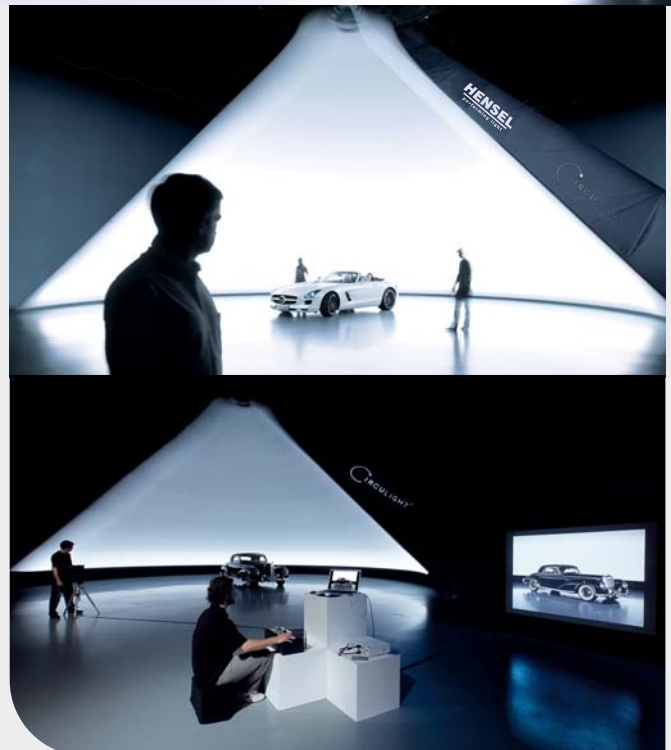
Everyone has come to know the 360° turntable. However, our 360° drivable Circulights are definitely absolute novelties. The basic idea is as simple as it is ingenious: take a megalight, integrate an electric drive with matching control unit, add lighting technology (flash or continuous light) inside and the "world's largest light tent" has been created. This is how, in one of Europe's largest car studios, the Circulight was born. With an illuminated surface of more than 25 qm and a length of 10 m, this is the giant among Megalights. It allows you to simultaneously illuminate several cars quickly and perfectly. Circulights are always tailored to fit specific applications or certain space requirements. This is why there are no fixed prices, dimensions, or specified lighting units. Please check with one of our sales consultants about quotes. This you may rely on: the performance potential of this system will certainly convince you. Never before has it been possible to light large objects this efficiently and homogeneously.

//experts at work

The unique Circulight inside one of Europe's most modern car studios.
// www.debeos-studios.de



// Depending on model, the Circulight can be operated with flash or continuous light.



Individual construction, available on request.

LINEAR FLASH //

Linear flashes can be ideally used whenever you want a wide angle of light disbursement but need a very narrow form of construction. The linear flash 90-3000 is easy to hide and its 3500 J provide plenty of capacity. The same applies to the linear flash 140. Additionally, the 140-series linear flashes are the basic equipment for any Autolight and Megalight. Due to their 3x 250 W modeling light per linear flash, they allow you to work comfortably and effortlessly inside the studio.



Code No. 915 Code No. 894
Heavy U-base (Code No. 430), optional

Code No. 915 // Linear Flash 90-3000

Capacity of up to 3500 J, housing length: 95 cm, weight: 2.7 kg, 2x 150 W halogen modeling lamp and detachable flash cable, 7 m. The Hensel Linear Light 90-3000 will be delivered with your choice of flash connection cable, either for round sockets or for 20-way long sockets. Please specify the type when ordering.

Code No. 894 // Linear Flash 140-3000

Capacity of up to 4000 J, housing length: 140 cm, weight: 3.1 kg, 3x 205 W halogen modeling lamp and detachable flash cable, 7 m. The Hensel Linear Light 140-3000 will be delivered with your choice of flash connection cable, either for round sockets or for 20-way long sockets. Please specify the type when ordering.

Code No. 912 // Linear Flash 140-6000

Capacity of up to 8000 J, housing length: 140 cm, weight: 3.1 kg, 3x 205 W halogen modeling lamp and fixed flash cable, 8 m. Delivery includes a fixed cable with 20-way plug.

Code No. 913 // Linear Flash 140-2 x 3000, with two connection cables

Capacity of up to 2 x 3500 J, housing length: 140 cm, weight: 3.8 kg, 3x 205 W halogen modeling lamp and detachable flash cable, 7 m. The two connector cables allow you to connect the Linear Flash either to two generators (for higher performance) or to one generator (for shorter flash duration times). The Hensel Linear Light 140-2x 3000 will be delivered with your choice of flash connection cable, either for round sockets or for 20-way long sockets. Please specify the type when ordering.

LIGHTSTICK //

LightStick 3000 J

Code No. 378 // for 20-way plug (long)
Code No. 379 // for circular plug

Includes: U-flash tube, up to 3000 J, glass protective dome, 3/8" tripod mount, connector cable, optionally with circular or 20-way plug (long).

Code No. 9450234 // Tube reflector

With freely adjustable barndoors



FLASHLIGHT TO HIDE

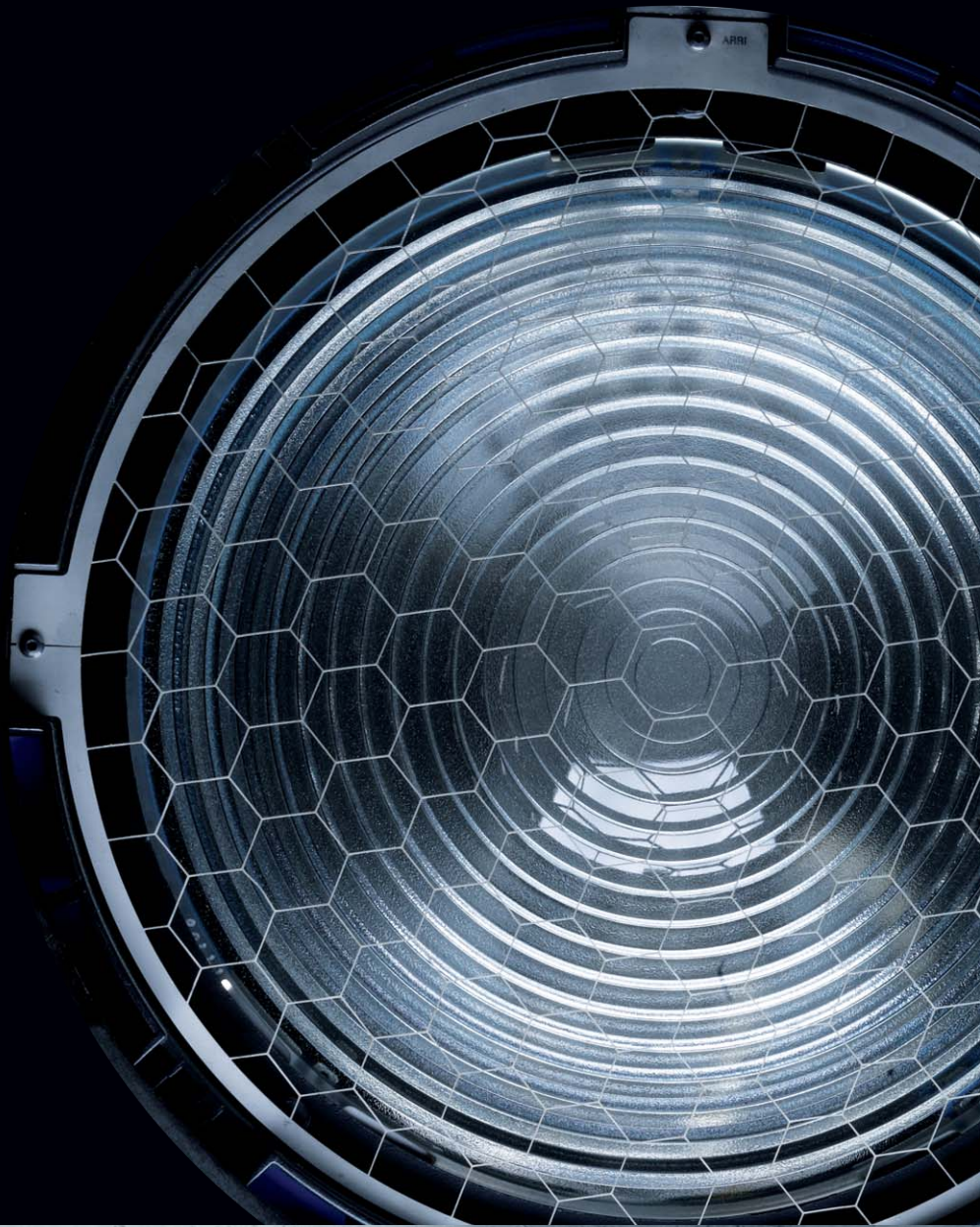
These units allow, due to their method of construction, to hide them in the photograph. No matter if you put it in the engine compartment, in the built-in cupboard or in/under a lampshade - there is always space to find for this useful little helper. Only flash, no modeling light.

// Compatible with any Hensel generators that have a 20-way plug socket (long) or round plug socket.



//spots

LIGHT OFF – SPOT ON // COMPATIBLE WITH ALL HENSEL GENERATORS



// F-SPOT 43

// STARSPOT 44

// WIDE ANGLE SUPERSPOT 45

// SPOT ACCESSORIES 45

MADE IN GERMANY

THE LIGHT GIANT F-SPOT //

THE F-SPOT, A WELL-DONE SYMBIOSIS BETWEEN ARRI® SYSTEM COMPONENTS AND THE PERFECTLY FINE-TUNED HENSEL FLASH TECHNOLOGY. THE SUN INSIDE THE STUDIO!

Fashion, furniture, still life — the F-Spot shows its true strength whenever a sunny flair is required. The F-Spot convinces with its lighting characteristics and its high light output. A “strong” light with clearly marked shadows for optimum color and high contrasts. With its large projection mirror, the special spot flash tube, and the perfectly adjusted Fresnel lens, it provides all the technical requirements for producing classic movie light. Hard, direct light results in good color saturation and clearly marked shadows. Inside the studio convection cooling prevents the development of bothersome noises. Ideal for continuous use in fashion, furniture, and table top photography. Power output of up to 6000 J. Extremely sturdy, all-metal housing designed for everyday, demanding studio action.



HIGHLIGHTS

- // Big 30 cm Fresnel lens with optimal light output
- // Focusable from 13° to 64° (with adjustment scale)
- // Max. flash output of up to 6000 J
- // Convection cooling

- // On/off switch for modeling light
- // Delivery includes 4-wing barn door and filter holder
- // Solid metal housing, extremely sturdy (ARRI®)
- // Focus option on front and backside



photo // www.vonsalomon.de

Code No. 3391 // F-Spot 3000, with round plug

Capacity of up to 3000 J, modeling lamp 650W/230V, convection cooling, plug-in flash tube, 30 cm Fresnel lens, can be focused on the front of the housing or on the backside (with adjustment scale), freely rotating 4-wing barn door, with round plug

Code No. 3390 // F-Spot 3000, with 20-way plug

Otherwise identical to Code No. 3391

Code No. 3393 // F-Spot 6000, with 20-way plug

Capacity of up to 6000 J, fixed flash tube, otherwise identical to Code No. 3390

Scope of delivery: 1x F-Spot, 1x flash tube, 1x halogen modeling lamp, 1x 4-wing barn door, 1x filter holder, with fixed flash cable 5m.

Please note: The spot is delivered with a 28 mm spigot on the bracket!

Third-party adaptations are possible upon request.



A detailed overview of all features and technical data is available at www.hensel.de under the respective equipment category.

THE HENSEL STARSPOT, THE LIGHT CHAMELEON //

A STAR WITH MANY FACES!

Small but mighty! No other spot offers you so much flexibility and performance at such a modest price! Ideally suited to be a multi-talent inside the studio or on location (Party version). Even the smallest Hensel Fresnel spot shines by providing clearly marked shadows, optimal color reproduction and excellent light output. Furthermore, it is extremely convertible: Besides the equipment's accessories like the barn door with four louvers and the lens tube spot, there are four more individual expansion options. These options enable you to cover a wide range of very different applications with one basic unit.



HIGHLIGHTS

- // Very compact and easy to handle design
- // Clearly marked shadows
- // Sehr flexibel einsetzbar durch optionales Zubehör
- // Special softbox available

- // Powerful modeling light up to 650 W
- // High light output and great focusing range
- // Third-party adaptations possible

Code No. 791 // Fiber Optic Set

A complete fiber optic set consisting of a fiber optic (Ø 10 mm, length: 100 cm, with focusable lens, pluggable filter frame / filter holder, inclined anti-dazzle device, table top tripod, articulated arm and optical adapter for three fiber optic items). Can be fixed by means of an adapter plate (Code no. 234).

Code No. 692 // Fiber Optic 10 mm

Fiber optic with a diameter of approx. 10 mm and focusing lens. Total length: approx. 1 m. The fiber optic shows a flexible construction and ideally needs a holder / flexible arm to be set into position.

Code No. 693 // Fiber Optic 5 mm

Fiber optic with a diameter of approx. 5 mm and focusing lens. Total length: approx. 0.5 m. Due to the metal jacket, the fiber optic guarantees for sturdy flexibility and due to its rigidity it is possible to freely adjust it without any further holding device.

Code No. 230 // Honeycomb Grid Set

To further limitate the circle of light or to set well-aimed passing light rays, a honeycomb grid set for the Starspot is available, consisting of 4 honeycombs and the corresponding honeycomb holder. With another holder these honeycombs can also be used on the Expert Spot 500, Expert Spot head or Contra E 1000 Spot.

Code No. 234 // Adapter for honeycomb holder code no. 221 for Starspot

In order to mount honeycomb grids to the Starspot, the honeycomb holder (code no. 221) needs to be inserted into the adapter (code no. 234). This assembly can then be inserted at the front of the Starspot.

Code No. 221 // Honeycomb holder for Starspot

Code No. 6130 // 4-Barndoor for Starspot

Code No. 188 // Starspot 1500 P, for Party

Capacity of up to 3000 J, modeling lamp 60W/12V, fixed flash tube, 11 cm fresnel lens, focusable, with round plug for connection to the Party.

Code No. 19018 // Starspot 3000, with round plug

Capacity of up to 3500 J, modeling lamp 650W/230V, active fan cooling, fixed flash tube, 11 cm fresnel lens, focusable, with round plug.

Code No. 190 // Starspot 3000, with 20-way plug

Otherwise identical to Code No. 19018

Scope of delivery: 1x Starspot, 1x flash tube, 1x halogen modeling lamp, with fixed 5m flash cable.

Code No. 689 // Optical Adapter for Fiber Optic

Adapter plate for max. 3 fiber optic items. Can only be used with the Starspot by means of the adapter (Code No. 234). If the adapter for projection attachments (Code No. 234) is inserted into the Starspot, all types of accessories of the EH 500 Spot and the Expert C 500 Spot (narrow snoot only in the front insertion) can be used.

Code No. 4603 // Sunhaze Box (ca. 45 x 65 cm)

The softbox for the Starspot. Its unique, patented functional principle brings light into the studio that is similar to that of a suddenly clearing sky when the sun breaks through. Lightly softened Fresnel light in the middle with soft light surrounding it and coming from one direction! Adaptation for other spots with 10 cm diameter upon request.

Single Honeycombs

Code No. 7100 // Size 1, very narrow, black, for strongly accentuated, spotted and precise light guiding.

Code No. 7101 // Size 2, narrow, black, for accentuated, concentrated light guiding.

Code No. 7102 // Size 3, medium, black, for fixed light guiding.

Code No. 7103 // Size 4, wide, black, with little "directional characteristics".

All honeycombs have "smooth" bright/dark transitions and a better light output than a comparable narrow snoot tube.

A detailed overview of all features and technical data is available at www.hensel.de under the respective equipment category.

THE HENSEL WIDE-ANGLE SUPERSPOT 3000/6000 //

THE WIDE-ANGLED ONE!

The „Do-it-yourself“ light! Thanks to the steplessly adjustable diaphragm, the diameter of the illuminated area can be changed as necessary. The four fixed slider plates (mask drawer) allow you to freely regulate the exit light. Points, lines, triangles or squares with different side length are possible, starting at a size of a few square millimeters up to the complete lighting of large background areas with a width of several meters. The mask drawer can be rotated by 360 ° and fixed in position.

Delivery includes a silver mirror for highest light efficiency. This projection spot can be equipped with an optional, white projection mirror which again increases the image quality. The profile structure makes the whole aluminium housing extremely sturdy and warp resistant. Setting the zoom optic and the position of the device within the bracket is done via handy quick-release fasteners. Both, the flash tube which is mounted on a fold-out lamp unit and the halogen light, are easy to exchange. When necessary, the unit can be removed without tools.



Code No. 171 // Wide-Angle Superspot 3000

Capacity of up to 3000 J, quick-change mirror fixture, plug-in flash tube, modeling light up to 650 W, 5 m connection cable. Iris diaphragm and mask drawer for creative lighting options.

Code No. 175 // Wide-Angle Superspot 6000

Capacity of up to 6000 J, with a fixed flash tube.
Otherwise identical to code no. 171.

Scope of delivery: 1x Wide-Angle Superspot, 1x halogen modeling lamp 650 W, 1x flash tube, 1x white projection mirror, 1x iris diaphragm, 1x mask drawer (built-in), 1x flash cable 5 m (fixed) with 20-way plug long and dust filter.

The Wide-Angle Superspot 3000 can also be delivered with a round plug.
Third-party adaptations are also possible.

HIGHLIGHTS

- // Great zoom range and very wide angle
- // Iris diaphragm also for smallest light points
- // Quick-change mirror fixture
- // Mask drawer for creative lighting options

- // Lamp assembly separately removes (unfolds)
- // Available for long and round plug connection.
- // Alu-Ziehprofilgehäuse, sturdy and warp resistant
- // Quick-clamp mechanism for zoom optics and on handle.

ACCESSORIES FOR PROJECTION SPOTS //

Code No. 711 // Set of dust filters

2x glass dust filters, square and rectangular, to slightly soften the light. For Wide-Angle and Superspot.

A detailed overview of all features and technical data is available at www.hensel.de under the respective equipment category.



Code No. 1500



Code No. 3010



Code No. 305

Code No. 1500 // Gobo Holder

Metal holder for the projection of gobo masks. The gobo masks are held safe and plane and can easily be exchanged.

Code No. 3010 // Holder for Grid Masks and Glasses

This holder has a U-shaped insertion for glasses (Code No. 183/1830) or grid masks (Code No. 182).

Code No. 305 // Pinhole Diaphragm

Additionally reduces any colour fringes on the borders and increases the projection quality of the spot.

// continuous light

PERFECT FOR DSLR VIDEOS // WIDE RANGE OF LIGHT FORMERS



// C-LIGHT D 47

// C-LIGHT 48

// LIGHTBAR LED 49

MADE IN GERMANY

THE HENSEL C-LIGHT D //



CONTINUOUS LIGHT FOR YOUR STUDIO!

The C-Light D is a compact daylight continuous light source that accepts any of the popular EH system light formers. It allows you to maintain your usual work methods using existing reflectors, softboxes, umbrellas, etc. In addition, this gives you a wider range of possibilities regarding the direct influence of light characteristics opposed to the use of standard continuous light sources.

The color temperature of the special 150 W metal halide lamp resembles that of daylight, and the light intensity equals that of a 650 W halogen lamp because of its high efficiency. Due to the low heat development in relation to the light performance, and due to the extremely quiet fan, the C-Light D can be operated just about anywhere without bothersome noises. Because of this, recordings with original sound are made much simpler. The life of the metal halide lamp is approx. 6000 h and thus much longer than the life of a halogen lamp.



HIGHLIGHTS

- // Efficient continuous light source perfect for photo and video shoots
- // Long-lasting (up to 6,000 hours) lamp with daylight color temperature
- // Low-noise passive cooling for smooth, uninterrupted operation
- // Compact, lightweight metal housing designed to accept Hensel EH light formers

- // Very economical due to affordable bulb
- // Efficient 150 W lamp with high light output and yet low heat generation and power consumption
- // Low power consumption under 2 A allows for simultaneous operation of multiple C-Light Ds on standard emergency power supplies or inverters

Code No. 300124 // C-Light D (230 V)

Compact continuous light source with daylight color temperature. High light efficiency, metal halide lamp with 150 W and approx. 6000 K, Low Noise active cooling, 360° reflector quick-change automatic and sturdy tilt head with integrated umbrella clamp.

Scope of delivery: 1x C-Light D, 1x glass protective dome (9454660), 1x transport cap (9456311), 1x 150 W metal halide lamp (650) and 1x power cord

Alternatively, there is a 150 W metal halide lamp available that has the color temperature of artificial light (ca. 3000 K).

A detailed overview of all features and technical data is available at www.hensel.de under the respective equipment category.



Code No. 73124125 // C-Light D Location Kit

Consists of: 2x C-Light D (300124), 1x ultra-silver umbrella 105 cm (101), 1x umbrella flood reflector (87), 1x 7" reflector (504), 1x 4-wing barn door (5044), 2x aluminum stand III (202) and 1x Softbag VII (4201)

HENSEL C-LIGHT 1000 //

USE MOTION BLUR EFFECTIVELY AND MIXED LIGHTING IN CREATIVE WAYS



Whether photo, 3D, or video, the C-Light always offers enough output with its 1000W and can be easily and quickly equipped with different halogen lamps (100 W, 200 W, 300 W, 500 W, 650 W or 1000 W) thanks to its lamp socket (GX 6.35). The on/off switch for the cooling fan ensures silence during sound recording and the thermal safety switch guarantees safety during operation.

On top of this, there is a wide array of reflectors available to choose from. The tried and true EH connector is the interface for a multitude of light formers of the Hensel flash units. Reflectors from 7" to 22", barn doors, umbrellas and softboxes, often already available at the studio, can be attached with it.

HIGHLIGHTS

- // Extremely compact construction and metal housing
- // Different performance levels by simply changing the lamp
- // 360° reflector quick-change automatic for EH connector
- // Compatible with EH light formers and their accessories

- // Low purchase price
- // Very good CRI due to halogen lamp
- // Low operating costs due to low-cost lamps (GX 6.35)
- // On/off switch for light and cooling fan



Code No. 7023608 // C-Light 2000 Kit

Consists of: 2x C-Light 1000 (3608), 1x Economy umbrella 82 cm (3180), 1x umbrella flood reflector (87), 1x 7" reflector (504), 1x 4-wing barn doors (5044), 2x aluminum stand III (200), 1x stand bag small (2980) and 1x Softbag-e transport bag (4205).



Code No. 3608 // C-Light 1000, Multivoltage

Up to 1000 W light output, lamp socket GX 6.35, cooling fan, separate switch for fan and light, 360° reflector quick-change automatic for EH and a sturdy tilt head with integrated umbrella clamp.

Scope of delivery:

1x C-Light 1000, 1x glass protective dome (9454650), 1x transport cap (9456311), 1x 1000 W halogen modeling lamp (152) and 1x power cord

A detailed overview of all features and technical data is available at www.hensel.de under the respective equipment category.

HENSEL LIGHTBAR 130 LED //

A TRUE HIGH-END LIGHT SOURCE

LED Lightbar with a length of 130 cm and 200 W LED output. The light efficiency will impress you. The wide intensity setting range is convincing and you can even separately select the color temperature. A CRI of 95 ensures optimum color rendering. The Lightbar can be controlled via the common DMX System. This expands possible applications from photography to film and television.



HIGHLIGHTS

- // 200 W LED light output
- // High CRI of 95
- // Freely adjustable color temperature
- // Freely adjustable intensity

- // Economical thanks to the extremely long life of the LEDs
- // Extremely low power consumption at high light efficiency
- // Practically no heat development
- // Even light distribution across the area, ideal for product photography and reproductions
- // Multi-voltage (100-240 V/50-60 Hz)
- // Light output almost similar to 2000 W halogen lamps
- // 9 f-stop power range in 1/10 f-stops
- // 2700-6500 K color temperature (adjustable in 50 K steps)

Code No. 9121254 // Lightbar 130 LED

200 W power consumption, metal housing, can be controlled via DMX. Color temperature and output are freely adjustable. Delivery includes tilt bracket (29.5 mm spigot) and power cord.

Code no. 9518411 // Barn doors for Lightbar 130 and Lightbar 130 LED

Metal construction, can be screwed on. Protect from undesirable scattered light.

A detailed overview of all features and technical data is available at www.hensel.de under the respective equipment category.

Available on request

//light formers

VERSATILE TOOLS FOR CREATIVE PHOTOGRAPHERS //



// EH REFLECTORS 51

// SOFTBOXES 52

// UMBRELLAS 54

// COMPARE LIGHT FORMERS 55

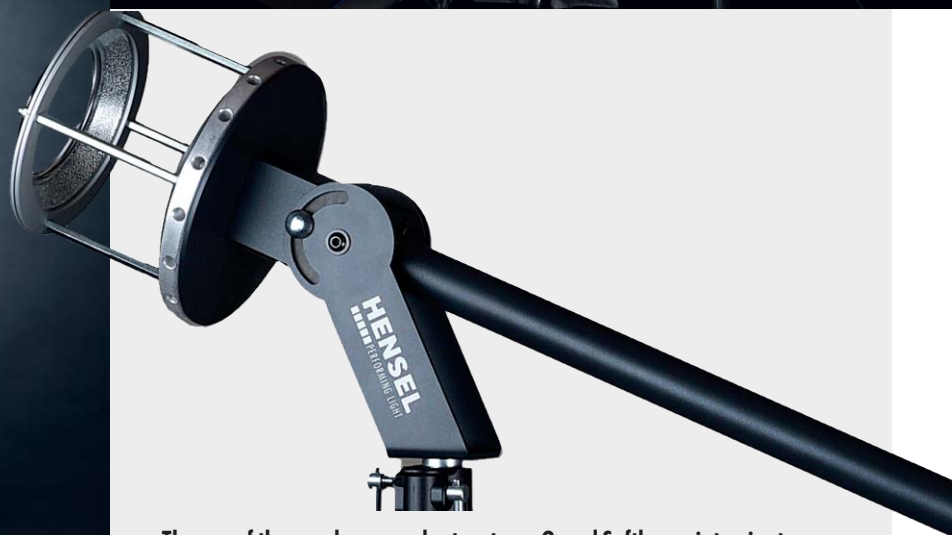
HENSEL BOUNCE ADAPTER & GRAND SOFTBOXEN //

THE NEARLY ROUND, PARABOLIC HENSEL GRAND SOFTBOXES CREATE AN EVEN BUT AT THE SAME TIME THREE-DIMENSIONAL LIGHT WHICH CLEARLY DIFFERS FROM TYPICAL OCTABOXES.

Many people and fashion photographers, however, want even more striking lighting. Thus, Hensel developed the Bounce Adapter, a special stand holder with integrated connector ring that allows the indirect mounting of Hensel compact flashes and flash heads inside the Grand and Octaboxes. This results in higher brilliance, better shadow definition, and better light efficiency compared with the usual connector ring with indirect mounting. By using the **HENSEL BOUNCE ADAPTER**, Grand softboxes are turned into giant reflectors which can also be used in an optimal way without diffuser.



Photos: Christian Kahlmann



The use of the new bounce adapters turns Grand Softboxes into giant reflectors which can also be ideally used without front and inner diffuser. Furthermore, the Bounce Adapter, developed and manufactured in Germany, has a very sturdy mechanical construction. A detachable pole lets you align and balance the whole unit with the help of a counterweight or weight bag (eyelet included). This makes handling much easier, especially when using the Grand 190 or Octabox 200. The integrated tilt bracket attaches to professional lamp stands with a 28 mm pin, but it also has a 16 mm socket for smaller stands.

Besides the Grand Softboxes with 90 cm, 120 cm, and 190 cm diameter, the Hensel Octaboxes 150 and 200 can also be used with the bounce adapter. Delivery includes a safety rope for flash heads and a weight bag.

Code No: 2323010 // Bounce Adapter

Suitable for: all Hensel compact flash units, Hensel flash heads, and Hensel continuous lights with EH connector and a maximum weight of 4.5 kg

Can be used with: Hensel Grand 90, 120, and 190, and also Octabox 150 and 200

Stand mount: 28 mm pin and 16 mm socket

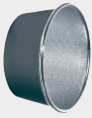
Dimensions: 19 x 36 x 29 cm (W x H x L), length of counter pole: 63 cm (detachable)

Weight: 4.2 kg (3 kg Bouncer + 1.2 kg counter pole)

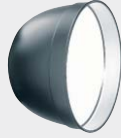
More Information: www.hensel.de

REFLECTORS EH CONNECTION //

// COMPATIBLE TO ALL UNITS OF THE SERIES
INTEGRA MINI, INTEGRA PLUS, EXPERT D, EH PRO AND EH (PRO) MINIⁱ FLASH HEADS



Code No. 87



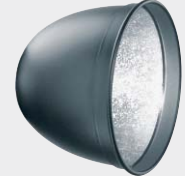
Code No. 504



Code No. 504 // 7" Honeycomb



Code No. 5060 // 9" Honeycomb



Code No. 5061



Code No. 5062



Code No. 9601 // 12" Honeycomb



Code No. 5050



Code No. 5050 // 14" Honeycomb



Code No. 9201



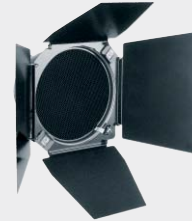
Code No. 92



Code No. 156



Code No. 1730



Code No. 1730 // 9" Honeycomb



Code No. 847



Code No. 9806111



Code No. 8607



Code No. 8607 // 22" Honeycomb



Code No. 8607 // 7" Honeycomb



Code No. 990 / 9900

Code No. 87 // Umbrella Flood Reflector
Code No. 504 // 7" Reflector
Code No. 505 // Honeycomb Grid Set round, No. 1-3
Code No. 507 // Honeycomb Grid No. 1
Code No. 508 // Honeycomb Grid No. 2
Code No. 509 // Honeycomb Grid No. 3
 not included in the set:
Code No. 506 // Honeycomb Grid No. 0
Code No. 5044 // 4-wing Barn Door with Filter Holder

Code No. 5064 // 9" Reflector Set S/M/L
Code No. 5060 // 9" Reflector S
Code No. 5059 // 9" Reflector S, white inner surface
Code No. 5061 // 9" Reflector M
Code No. 5062 // 9" Reflector L
Code No. 5065 // Honeycomb Grid Set, round, No. 1-4
Code No. 5066 // Honeycomb Grid, No. 1, round, black
Code No. 5067 // Honeycomb Grid, No. 2, round, black
Code No. 5068 // Honeycomb Grid, No. 3, round, black
Code No. 5069 // Honeycomb Grid, No. 4, round, black
Code No. 5063 // Reflector & Honeycomb Grid Set
Code No. 7120 // Color and Diffusion Filter Set
Code No. 1730 // 4-wing Barn Door

Code No. 9601 // 12" Reflector
Code No. 9611 // Honeycomb Grid Set, round, No. 1-4
Code No. 9611 // Honeycomb Grid, No. 1, round, black
Code No. 9612 // Honeycomb Grid, No. 2, round, black
Code No. 9613 // Honeycomb Grid, No. 3, round, black
Code No. 9614 // Honeycomb Grid, No. 4, round, black
Code No. 1790 // Color and Diffusion Filter Set
Code No. 9701 // 4-wing Barn Door with Filter Holder

Code No. 92 // Narrow Snoot Reflector
Code No. 9201 // Accent Tube

Code No. 156 // Backlight Reflector

Code No. 5050 // 14" Reflector
Code No. 5056 // 14" Honeycomb No. 3 (40°)
Code No. 5057 // 14" Honeycomb No. 4 (50°)
Code No. 5053 // Adapter Attachment with
 Filter Holder for Barn Doors
Code No. 5052 // Filter Holder
Code No. 5051 // 4-wing Barn Door

Code No. 847 // EH / MH Adapter

Code No. 8607 // 22" ACW Beauty Dish EH, white. Compl. with deflector a. filter holder.
Code No. 8608 // 22" ACS Beauty Dish EH, silver. Compl. with deflector a. filter holder.

Code No. 8609 // 22" ACW Beauty Dish Kit EH, consists of: 1x reflector 22" ACW (8607), 1x 7" honeycomb no. 2 (508) and 1x AC reflector bag (9900)
Code No. 8610 // 22" ACW Beauty Dish Kit EH, consists of: 1x reflector 22" ACW (8607), 1x 22" honeycomb no. 3 (870) and 1x AC reflector bag (9900)
Code No. 8612 // 22" ACS Beauty Dish Kit EH, consists of: 1x reflector 22" ACS (8608), 1x 22" honeycomb no. 3 (870) and 1x AC reflector bag (9900)
Code No. 8613 // 22" ACS Beauty Dish Kit EH, consists of: 1x reflector 22" ACS (8608), 1x 7" honeycomb no. 3 (509) and 1x AC reflector bag (9900)

Code No. 870 // 22" Honeycomb No. 3, for Beauty Dish (8607 and 8608)
Code No. 871 // 22" Honeycomb No. 4, for Beauty Dish (8607 and 8608)

Code No. 9900 // Softbag for ACW reflectors with rim.
Code No. 990 // Reflector Bag Soft, for 22" Beauty Dish

7" Honeycombs for 22" Beauty Dish:

Code No. 505 // Honeycomb set / 7", round, No. 1-3
Code No. 506 // Honeycomb, No. 0, round, black
Code No. 507 // Honeycomb, No. 1, round, black
Code No. 508 // Honeycomb, No. 2, round, black
Code No. 509 // Honeycomb, No. 3, round, black
Code No. 9806111 // Conversion set for ACB reflector (for later modification)

Note: Due to limited space only some of the many possible variations are pictured. For information about MH reflectors & accessories, please ask your local dealer.

HENSEL SOFTBOXES //



photo // natalia luzenko

Softboxes are among the most popular light formers in any area of photography. They allow natural lighting with controlled contrasts, defined highlights, and they are ideal for use inside the studio or on location. The speedring can be used with almost any Hensel softbox. The rods of the Hensel softboxes as well as the speedring are color-coded: black for the rectangular softboxes, red for the stripboxes, and blue for the octaboxes. This makes set-up fast and easy! The inside and outside diffusers have just a small label sewed into the edge that tells you to which softbox they belong. Hensel offers you a comprehensive selection of sizes and forms for mastering almost any photography task.

Especially the new parabolic softboxes Grand 90 cm, Grand 120 cm, and Grand 190 cm enormously expand your creative options with their distinctive light effects.

HIGHLIGHTS

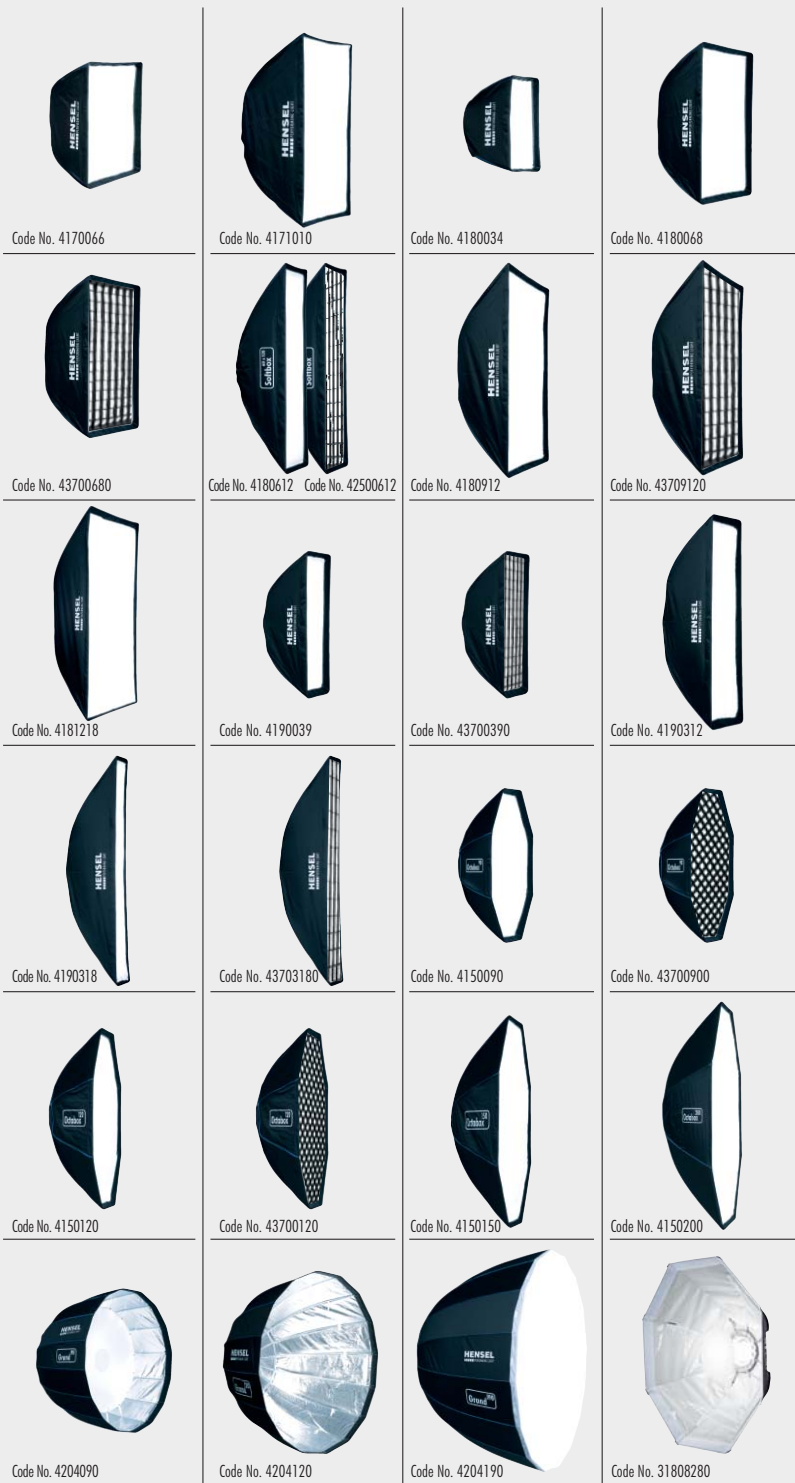
- // Changeable front and inside diffusers allow you to adjust light characteristics
- // All softboxes (except Grand 190) are equipped with a recessed front diffuser to minimize light scatter and Velcro areas for using accessories like honeycombs
- // Standard aluminum connector ring for almost all softboxes, color-coded
- // Thanks to high-quality materials, all boxes offer excellent color rendering that remains stable for years to come

- // Even light distribution and high efficiency due to optimum design
- // The provided nylon transport bags have content labels to ease the matching of parts
- // All seams and hems are neatly done and of heavy duty quality – ideally suited to frequent set up and dismantling
- // The lightweight but extremely durable specialty fabric of the outer shell increases resilience and thus the lifespan of the new softboxes.



photo // michael quack // www.visualpursuit.de

HENSEL SOFTBOXES //



SQUARE

Code No. 4170066 // Softbox 60 x 60 cm

Code No. 4171010 // Softbox 100 x 100 cm

RECTANGULAR

Code No. 4180034 // Softbox 30 x 40 cm,
use with max. 300 W modeling light

Code No. 4180068 // Softbox 60 x 80 cm

Code No. 43700680 // Aurora Fabric Honeycomb for
Hensel Softbox 60 x 80 cm

Code No. 4180612 // Softbox 60 x 120 cm

Code No. 42500612 // Aurora Fabric Honeycomb
for Hensel Softbox 60 x 120 cm

Code No. 4180912 // Softbox 90 x 120 cm

Code No. 43709120 // Aurora Fabric Honeycomb
for Hensel Softbox 90 x 120 cm

Code No. 4181218 // Softbox 120 x 180 cm

STRIPBOX

Code No. 4190039 // Stripbox 30 x 90 cm

Code No. 43700390 // Aurora Fabric Honeycomb
for Hensel Softbox 30 x 90 cm

Code No. 4190312 // Stripbox 30 x 120 cm

Code No. 4190318 // Stripbox 30 x 180 cm

Code No. 43703180 // Aurora Fabric Honeycomb for Hensel Softbox 30 x 180 cm

OCTABOX

Code No. 31808280 // Softdish Ø 80 cm

Code No. 4150090 // Octabox Ø 90 cm

Code No. 43700900 // Aurora Fabric Honeycomb for Hensel Octabox 90 cm

Code No. 4150120 // Octabox Ø 120 cm

Code No. 43700120 // Aurora Fabric Honeycomb for Hensel Octabox 120 cm

Code No. 4150150 // Octabox Ø 150 cm

Code No. 4150200 // Octabox Ø 200 cm

GRANDS

Code No. 4204090 // Grand Ø 90 cm - 16-sided, parabolic

Code No. 4204120 // Grand Ø 120 cm - 16-sided, parabolic

Code No. 4204190 // Grand Ø 190 cm - 16-sided, parabolic

Scope of delivery: All softboxes come complete with a nylon transport bag. The Speedring is not included in the delivery and needs to be ordered separately.

SPEEDRINGS

Code No. 4000300 // Speedring for the connection
of Soft-/Strip-/Octaboxes to the EH-System (10 cm)

Code No. 4000255 // Speedring with tilt head for the connection
of Grand Softboxes to the EH-System (10 cm)

Other adapter rings for the connection of Hensel softboxes to common third-party equipment are in stock. Please contact us for information.

FABRIC HONEYCOMBS

Now broad but also directional light is no longer a contradiction in terms. Light scatter is effectively reduced without restricting the broad lighting across an intended area. This is not only ideal for nude and people photography. The fabric honeycombs simply attach with Velcro tape.

ULTRA E SOFTBOXES FOR HENSEL EH CONNECTORS

Code No. 4601 // Softbox E 45 x 65 cm, use with max. 300 W modeling light

Code No. 3009090 // Softbox E 90 x 90 cm

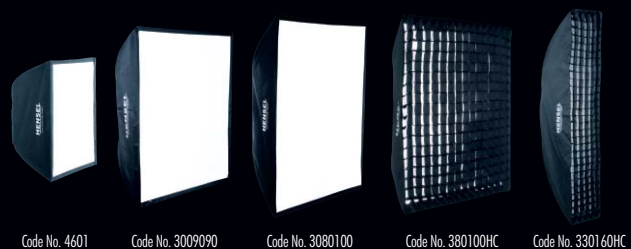
Code No. 3080100 // Softbox E 80 x 100 cm

Code No. 380100HC // Softbox E 80 x 100 cm with fabric honeycomb and recessed diffuser

Code No. 330160HC // Softbox E 30 x 160 cm with fabric honeycomb and recessed diffuser

SCOPE OF DELIVERY:

All Softboxes come complete with transport bag. The E-series softboxes are only available for the Hensel EH connector. The EH Speedring is included in delivery.



UMBRELLAS //

// FOR EH PRO/EXPERT/INTEGRA



Code No. 103



Code No. 104



Code No. 3180



Code No. 99



Code No. 101



Code No. 1140



Code No. 106



Code No. 4821619

Example



Code No. 4821623

Example



Code No. 4831619

Example



Code No. 792

- Code No. 103** // Translucent Umbrella Ø 105 cm
- Code No. 104** // Translucent Umbrella Ø 80 cm
- Code No. 3180** // Economy White Ø 82 cm
- Code No. 99** // Master M white Umbrella Ø 105 cm
- Code No. 101** // Ultra Silver Umbrella Ø 105 cm
- Code No. 1140** // Master PM white Parabol Ø 80 cm
- Code No. 106** // Softstar Ø 105 cm without adapter plate

- Code No. 4107923** // Jumbo Umbrella 2 m, silver/black. Delivered with angle joint and sandbag.
- Code No. 4821619** // Master PXL, silver, parabolic flash umbrella 135 cm, incl. transport bag
- Code No. 4821623** // Master PXL white, parabolic flash umbrella 135 cm, incl. transport bag
- Code No. 4831623** // Master PXL diffuser, for Master PXL umbrellas, incl. transport bag.
Only use with halogen lamps of up to maximum 650 W
- Code No. 792** // Adapter plate to mount Softstar to Contra/Expert Pro/EH Pro

COMPARE LIGHT FORMERS //

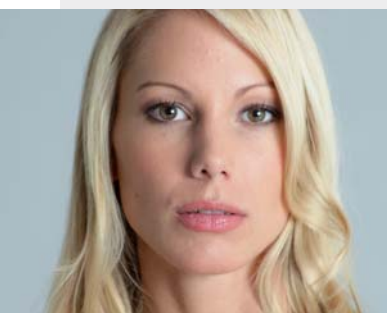
DETAILED INFORMATION AND THE CHANCE TO COMPARE LIGHT FORMERS DIRECTLY WITH EACH OTHER CAN BE FOUND ON OUR HOMEPAGE AT: // www.hensel.de



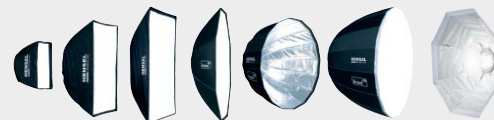
// THE HENSEL REFLECTORS



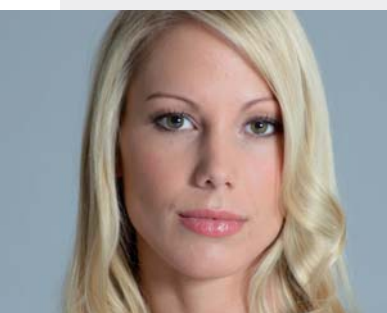
Ideally adapted to the flash tubes and modeling lights of Hensel flashes, each reflector is a specialist in its own area. All reflectors are heavy-duty units made of metal. Their crimped rims ensure excellent stability and durability. With some reflectors, honeycomb grids can be directly mounted on specially shaped front lips. The reflectors are an integral part of the comprehensive Hensel system. This means that at identical diameters, accessories can be mounted on different reflectors. The same is true of mounting diameters. An example: the EH diameter (Ø 10 cm) is used by all current Hensel units – maximum compatibility!



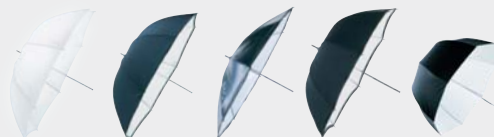
// THE HENSEL SOFTBOXES



Your first choice for brilliant, homogeneous light and/or appealing mirror effects. All boxes offer extremely homogeneous light dispersion combined with maximum efficiency. They are very easy to take apart. Varying with the individual types, the boxes are equipped with internal and external diffusers. You can choose between very different light effects depending on whether you work with or without these diffusers. An interesting detail: Like any other reflector, the softboxes can be rotated by 360° on their mounts. The Octaform Lightboxes are particularly suited for people and portrait shoots by virtue of their extreme flatness and their octagonal shape. Especially the new parabolic Grand softboxes with their characteristic lighting effects significantly expand your creative.



// THE HENSEL UMBRELLAS



Their classical "brolly mechanism" recommends them for quick jobs. Their affordability and versatility makes them an integral part of a photographer's equipment. We recommend the umbrella flood reflector (Code No. 87, EH) for use with our umbrellas. They are required for optimum light distribution. Depending on the desired effects, the big umbrellas can also be combined with other reflectors. The new Master PXL umbrellas with their pronounced parabolic shape and XXL format offer a performance like none before.

You can find the full range of our reflectors, softboxes and umbrellas in our current price list or on our website: www.hensel.de in the category "Products // Light formers".

// studio accessories

ESSENTIAL ACCESSORIES FOR DEMANDING PHOTO SHOTS //



// STANDS & ACCESSORIES

// FLASH METERS

// STUDIO ACCESSORIES

// FLASH TRANSMITTERS

// COLORAMA BACKGROUND PAPERS

// SOFT BAGS

// BACKGROUND SYSTEMS

// CEILING MOUNTED SYSTEMS

photo // natalia luzenko



ASK FOR OUR MAIN CATALOG OR BROWSE ONLINE AT:

// WWW.HENSEL.DE

SINCE 1963 COMPETENCE IN LIGHT //

- // A DIVERSIFIED SYSTEM
- // HIGH ASSET PROTECTION AND BEST VALUE RETENTION
- // QUICK SERVICE AND FAST AVAILABILITY
- // LOW MAINTENANCE COSTS
- // HIGHEST STANDARD WITH MANUFACTURER BRAND CHARACTER
- // QUALITY PRODUCTS – DEVELOPED AND MADE IN GERMANY
- // BEST CONSULTING SERVICE AND PRODUCT TESTING
- // LONG-LASTING RESILIENCE AND LONGEVITY
- // FLASH TECHNOLOGY FOR INDUSTRIAL USE
- // CONSISTENT DEVELOPMENT AND INNOVATIVE IMPROVEMENTS
- // INTENSIVE PROMOTION OF YOUNG TALENTS

HENSEL-VISIT GmbH & Co. KG // Robert-Bunsen-Str. 3 // 97076 Würzburg // Germany
Phone: +49-931-27881-0 // Fax: +49-931-27881-50 // info@hensel.de // www.hensel.de

HENSEL
PERFORMING LIGHT



hensel.visit

Instagram hensel_visit

YouTube HenselVisit

PRESENTED BY: