



# Kuhn™ Tube Cutter

Model Rocket Body Tube Cutter  
Designed by Howard Kuhn; Improvements by Matt Steele

## Parts List

Qty	Part #	Description
1	9515	Cutting Fixture
1	9516	Stop Block
2	9517	Clamps
2	9518	Single Edge Razor Blade
1	8801	Measurement Decal Sheet
1	9801	Instruction Sheet



### **About the Kuhn Tube Cutter:**

Back in the 1970's Howard Kuhn's Competition Model Rockets company offered a slick tool nicknamed the "Kuhn Cutter". The tool quickly became a mainstay in my workshop, as well many other rocketeers workshops of the time.

When I finally wore my original cutter out (with too much slop in the razor blade slot), I made an improved tool. I added a tab that made it easy to clamp the tool to my workbench, and I replaced the original clamp with a slide clamp that made cutting a tube even quicker. Now, a new generation of rocketeers can see the genius of Howard Kuhn!

### **About Howard Kuhn:**

Howard Kuhn was a US and world model rocket champion. He founded Competition Model Rockets in the 1970's, and was the Contest Director for NARAM-16 in 1974. He was also the contest director for the 1980 World Spacemodeling Championships held in the US. He chaired the FAI governing committee for international spacemodeling competition from 1979 to 1995 and spread our hobby worldwide through his efforts. He was the first rocketeer to be awarded the FAI Aeromodeling Gold Medal.

### **Before You Start:**

Thank you for purchasing this North Coast Rocketry® product. We hope you have an enjoyable time constructing and using this tool. Please read all of these instructions to become familiar with them before starting construction.

**The following materials are necessary for construction:**  
#220, #320 and #400 sandpaper, Clear tape (optional)

**The following tools are required for construction:**  
Razor Saw

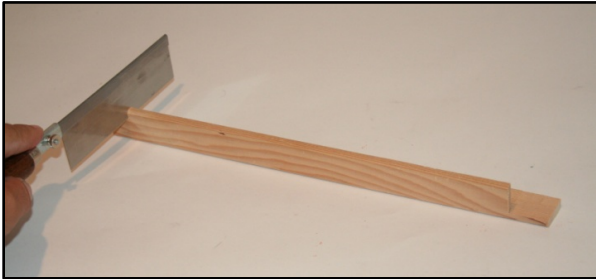
Check the kit for completeness, using the parts list and reference photograph. If parts are missing or damaged, or if for any reason you are dissatisfied with this product, please let us know at [www.NorthCoastRocketry.com](http://www.NorthCoastRocketry.com). We will gladly replace any item found to be defective. Our goal is for you to be satisfied with your purchase, and to have fun!

- This kit is recommended for adults(18 and older) only.
- North Coast Rocketry certifies that it has exercised reasonable care in the design and manufacture of its products. However, as we cannot control the use of our products once sold, we cannot assume any responsibility or liability for product usage.
- North Coast rocketry shall not be held responsible for personal injury or property damage resulting from the use of our product. The buyer assumes all risks and liabilities arising from the use of our product and uses our product on these conditions.
- North Coast Rocketry makes no warranty regarding our products, except for defects in materials or workmanship for a period of one year after purchase.
- If any of these terms are unacceptable, please return the item to the point of purchase.

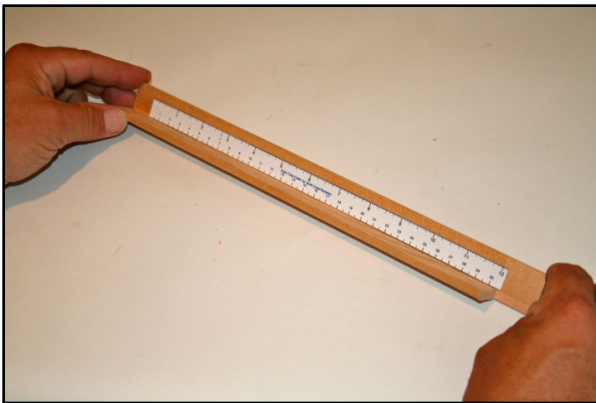
# North Coast Rocketry

## How to Assemble Your Cutter

- Fine sand all the wood parts with #220, #320 and #400 sandpaper.
- Lay the wood L-angle molding Cutting Fixture so that the exposed tab is parallel with your work surface.
- Measure 1" from the left end of the Cutting Fixture. Extend a mark  $\frac{1}{2}$ " down the inside and outside of part Cutting Fixture. Be sure the mark is at a right angle to the wood molding.
- Using a fine razor saw, cut a groove  $\frac{1}{2}$ " deep in part Cutting Fixture.



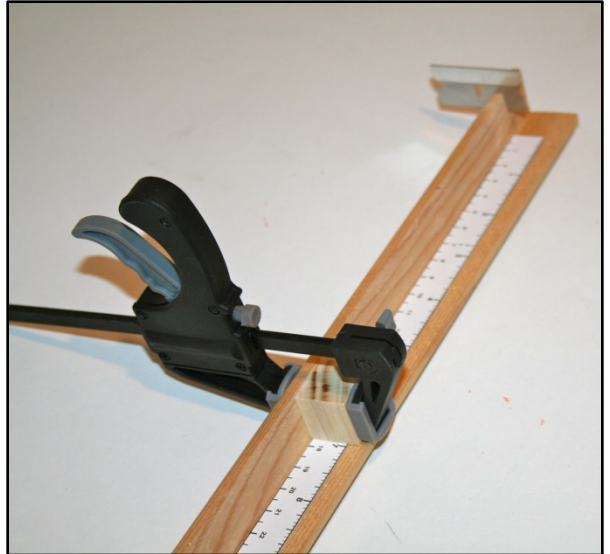
- Cut out the adhesive ruler. Peel back the protective paper, and apply to the Cutting Fixture, with the zero even with the groove.



- For added durability, cover the ruler with a layer of clear tape (optional).

## How to Use Your Cutter

- Using one of the clamps, clamp the cutter to the your work surface. Adjust the stop block to the length of tube you wish to cut, and clamp it in place, using the other clamp.



- Lay the tube in the Cutting Fixture, butting it up against the wood stop block. For best results, insert a tube coupler inside the tube in the area where the tube is to be cut.

- Insert the razor blade into the cutting fixture and press down on the tube lightly.

- Slowly turn the tube. Do not try to cut all the way through the tube with one cut. Instead, turn 3-6 complete revolutions. The result should be a factory-cut edge.

